

CITIZEN CENTRED SERVICES “A”

Children’s Services Division

2006 Operating Budget Overview

Presentation to Community Services Committee on January 12, 2006

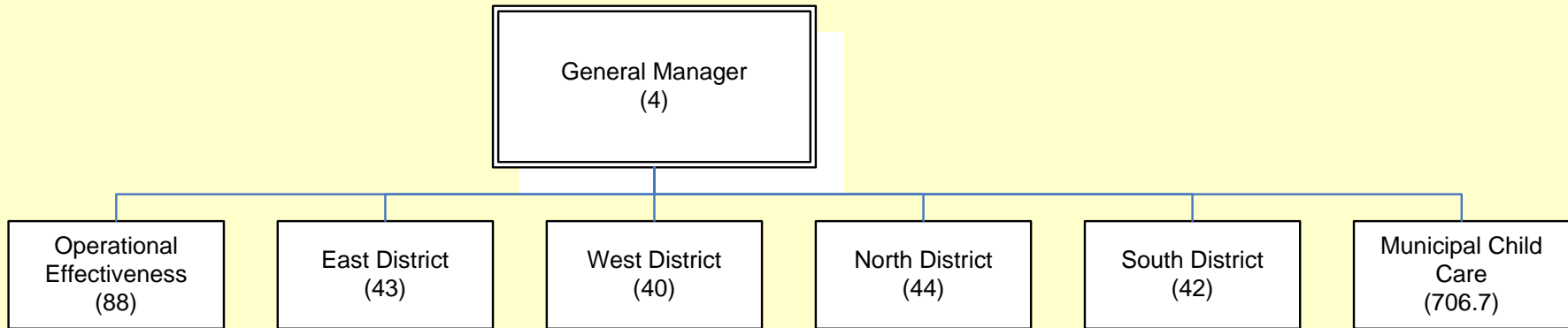
Mission Statement

The Children's Services Division manages Toronto's child care system. In partnership with the community, the division promotes equitable access to high quality care for children and support for families and caregivers. Children's Services are planned, managed and provided in ways that promote early learning and development, respond to families' needs and choices and respect the diversity of Toronto's many communities. An integrated approach to serving children and families ensures public value and benefit for all.

- **Children's Services (CSD)**
 - **Committed to Children**
 - **Supportive of Families**
 - **Building Community Capacity**

2006 Program Map

Total: 967.7



Service Level Indicators & Accomplishments

- Achieved payment of actual costs to child care operators under the Multilateral Framework on Early Learning and Care
- Preserved child care service levels and began service growth under Best Start
- Improved service accessibility through the funding of minor capital expansion projects
- Successfully negotiated funding for the extension of integrated early learning and care models through the First Duty Project
- Approval of the 2005-2009 Toronto Child Care Service Plan
- Organizational restructuring completed within existing resources -
- Children with special needs supported through the implementation of a new model of service support
- Led the development of the Best Start Network
- Approval of Best Start Service and Infrastructure Plans
- Provided support to the Mayor's Task Force on Children, Youth and Education

2006 Operating Budget Issues / Pressures

- Impact of Best Start on School Age Children
- Impact of Income Testing on Revenue

Best Start

(\$000's)

Approved	2005	2006	Total 2006
Operating	25,404.4	56,867.6	82,272.0
Capital	20,513.0	22,913.0	43,426.0
Total	45,917.4	79,780.6	125,698.0
Less:			
Spent So Far	(5,703.8)		(5,703.8)
Allocated to Administration	(1,002.7)		(1,002.7)
Carried Over to 2006	39,210.9	79,780.6	118,991.5

* Best Start Capital is allocated to the Operating Budget because almost all expenditures will be in form of grants.

2006 Base Budget Request (Net \$000's)

2005 Approved Budget		68,123.6
+	Prior year, Economic Factor - Salary and Non-Salary	2,149.5
+	2006 Merit & Step Increases	1,039.3
+	Reversal of One-time contribution from Reserve Funds	6,307.2
-	Reinstate funding from NCB and Child Care Capital RF	(2,600.0)
-	Transfer funding to Best Start and reinstate full cost sharing of program administration expenses.	(5,571.8)
2006 Requested Base Budget		69,447.8

2006 Proposed Base Budget (Net \$000's)

	Net	% Inc / (Dec) from 2005
2005 Approved Budget	68,123.6	
2006 Requested Base	69,447.8	1.9
Proposed Reductions	(780.8)	(1.1)
Proposed Base Budget	68,667.0	0.8
Target	69,486.1	2.0
Over / (Under) Target	(819.1)	(1.2)

Proposed Reductions/Transfers (Net \$000's)

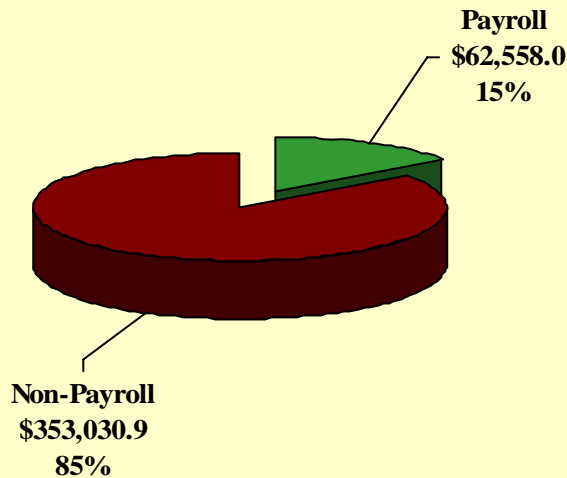
Reductions/Transfers	\$
Fund Toronto Field Office relocations within Best Start	(315.7)
Fund additional 5 clerical staff with Best Start	(145.1)
Defer the contribution to Child Care Capital Reserve Fund	(320.0)
Best Start Capital transfer from Capital Program to Operating (\$43.4 million gross fully funded by Province)	-
Total Reductions/Transfers Beyond Target	(780.8)

2006 Proposed Budget

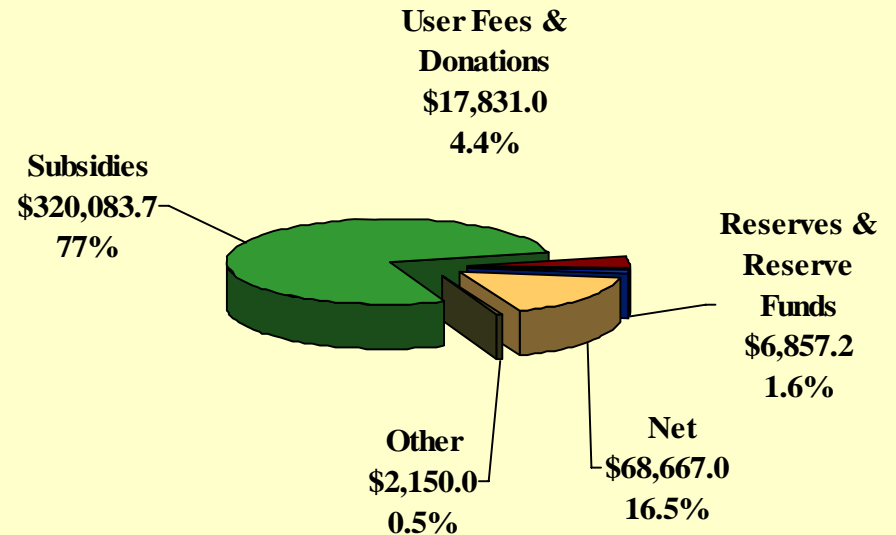
Gross Expenditures & Funding Sources (\$000s)

(Gross \$415,589.0 Net \$68,667.0)

Gross Expenditures

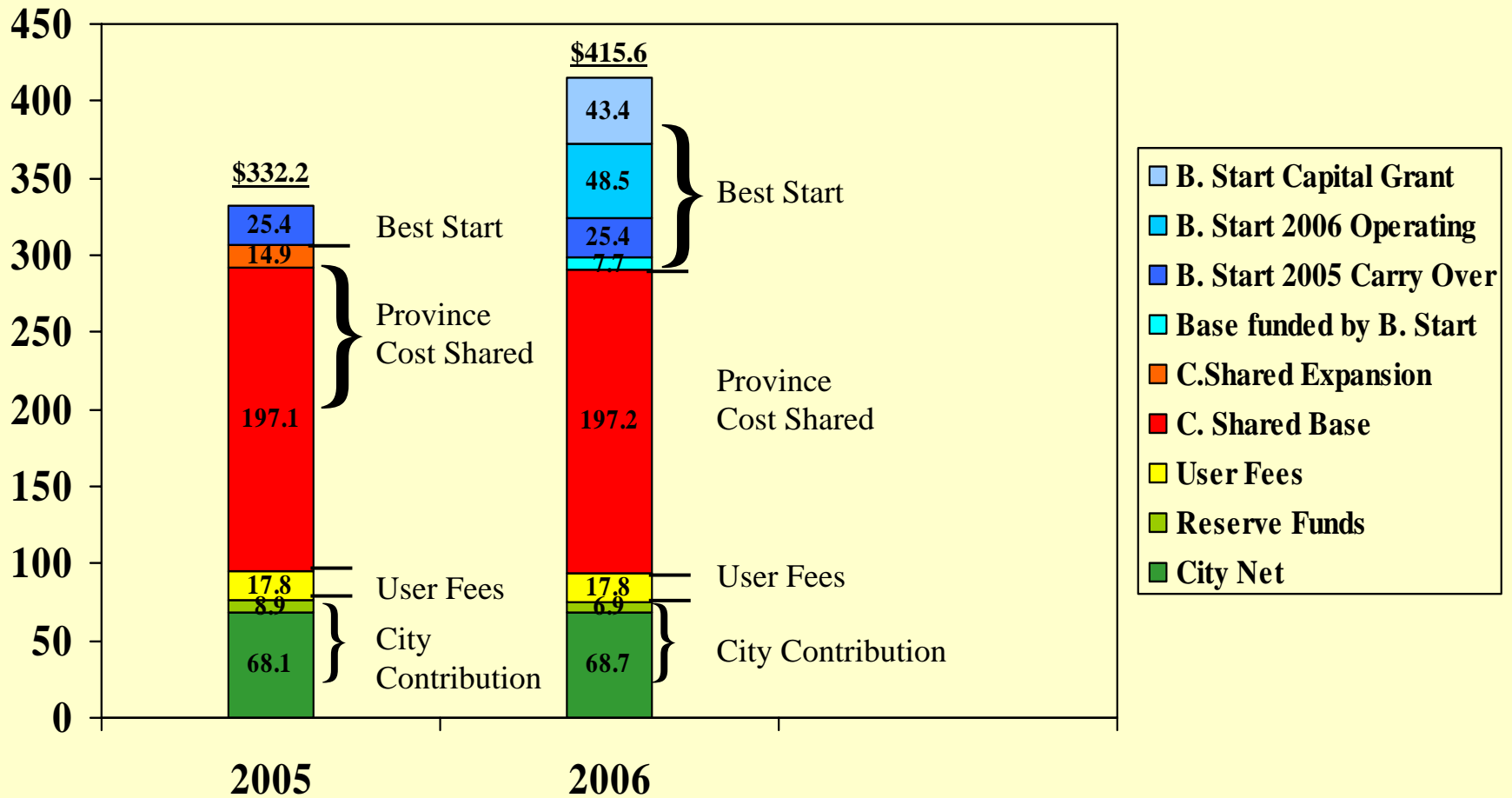


Funding Sources



Children's Services Funding Sources

(\$ Millions)



New & Enhanced Services Requested / Proposed - (Net \$000's)

New & Enhanced	Requested Net	Proposed Net
2006 Best Start Initiative (operating) (\$48,475.6 totally funded by provincial subsidy)	-	-
2006 Best Start Initiative (capital) (\$43,426.0 totally funded by provincial subsidy)	-	-
Needs of School Aged Children (\$3,707.2 to be funded by Social Services Stabilization Reserve Fund)	-	-
Total New & Enhanced	-	-

Reserve / Reserve Fund Balances

Reserve / Reserve Funds	2005	2006						Projected Year-End Balance
	Projected Year-End Balance	Draws			Replenishment			
		Operating Budget	Capital Budget	Total	Operating Budget	Capital Budget	Total	
Child Care Capital RF	7,300.0	(400.0)	(3,843.0)	(4,243.0)	-	-	-	3,057.0
Child Care Expansion Project RF	897.5	(550.0)	-	(550.0)	-	-	-	347.5
National Child Benefits Supplement RF*	*	(2,200.0)	-	(2,200.0)	-	-	-	*
Social Services Stabilization RF*	*	(3,707.2)	-	(3,707.2)	-	-	-	*
Total	8,197.5	(6,857.2)	(3,843.0)	(10,700.2)	-	-	-	3,404.5

* Funds controlled by Social Services