

Multi-Use Trails Construction Victoria Park to Kennedy Subway Station

Initial Project Start Date: October 04, 2010
Anticipated Work Resumption: May 12, 2011
Expected Project Completion Date: June 30, 2011

The City of Toronto will begin construction of a multi-use trail along the Gattineau Hydro Corridor, which runs north of Eglinton Avenue. The trail construction will improve and add to the existing pathway from Victoria Park Avenue to the Kennedy Subway Station. The intended uses of this trail are recreation and commuting. The new trail will be 3.5 metres in width and run approximately 4.8 kilometres.

This project originally began in October, 2010 and was planned to be completed by the end of March, 2011. Notices were circulated early October, 2010, which outlined the work and construction details. The construction works on this project were delayed due to early winter weather conditions.

The City of Toronto will also begin construction of barrier free ramps to the pedestrian bridge passing over the railway tracks between Mooregate Ave and Tara Ave. On June 30, 2011 the bridge will be closed to begin construction and expected to open by the first week of September.

Construction Details

The work will consist of the construction and rehabilitation of an asphalt pathway. New construction will include excavation, placement of imported granular base material, and asphalt paving. Rehabilitation will involve grinding or excavation sections of the existing path and replacement with new asphalt. Signalized street crossings will be constructed at Pharmacy Ave, Warden Ave, and Birchmount Road. Some shrubs and trees will be removed to accommodate the new pathway alignment and three new trees will be planted for every one tree removed, plus additional new trees in selected areas.

Calcium chloride and water will be available for dust control during construction. A full-time site inspector will be on-site to handle any unforeseen situations.

The segment(s) of pathway under construction will be closed to the public during construction. No impacts to other utilities are expected.

Il Duca Construction Ltd. was awarded this contract. Construction will resume on May 12, 2011 and is expected to be completed by June 30, 2011.

Work Hours

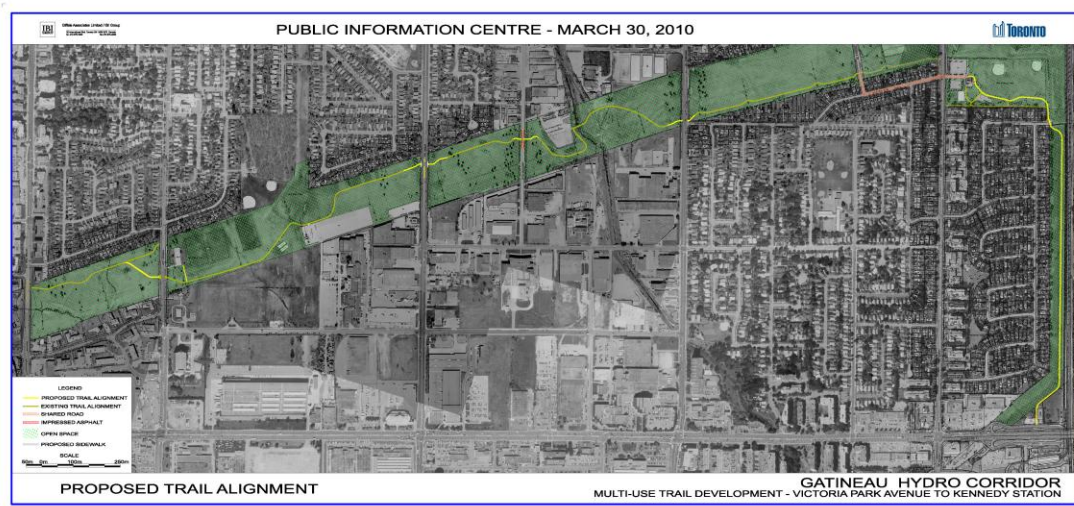
Construction shall be carried out between 7:00 a.m. and 7:00 p.m. on weekdays and between 9:00 a.m. and 7:00 p.m. on weekends and statutory holidays in accordance with City By-laws.

Pedestrian and Vehicle Access

Access to private driveways, sidewalks, pathways, TTC/GO transit shelters/bus stops, etc is not expected to be impacted.

Lane restrictions will be required to facilitate intersection improvements. The details of lane closures will be prepared by the contractor and require the approval of the City of Toronto.

The construction staging areas will be located on the west side of Pharmacy Avenue, the west side of Warden Avenue, the east side of Birchmount Road, the east side of Kennedy Road, and east of Mooregate Avenue.



Need more information?

We welcome your questions, comments and suggestions.

Contact person
Wallace Lee
Project Manager, IBI Group
Consultant working on behalf of the City of Toronto

Telephone No.
416-679-1930

wallace.lee@ibigroup.com

Website

http://www.toronto.ca/cycling/rinc_projects

Date: May 05, 2011

