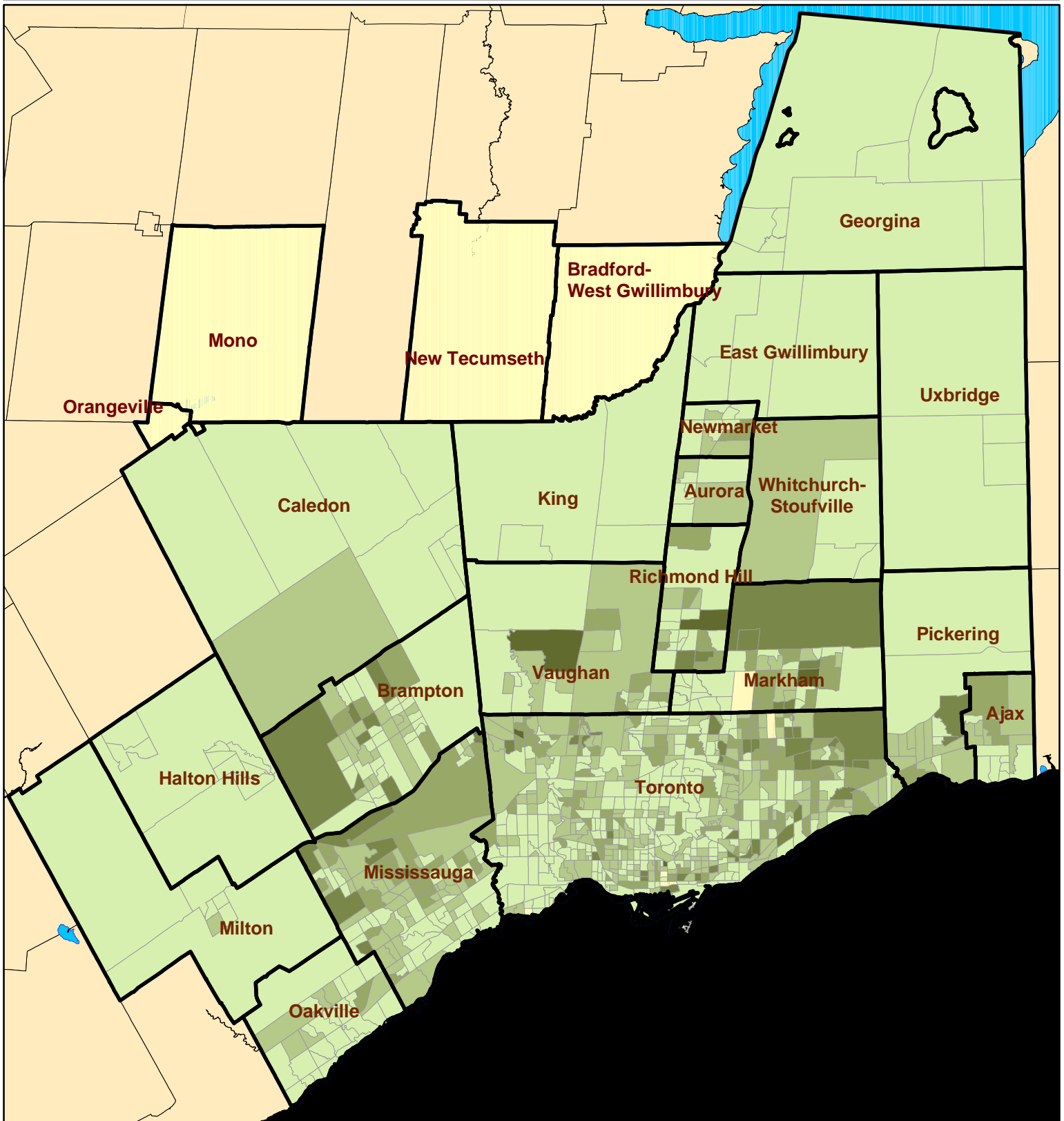
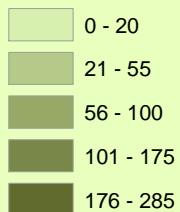


Toronto CMA Multiple Visible Minority Population* 2001



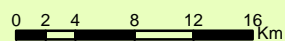
Legend

Multiple Visible Minority*



*Respondents who noted more than one visible minority origin.

No Data



Source: Social Policy Analysis & Research; Census 2001
 Copyright 2005 City of Toronto. All Rights Reserved.
 Publication Date: October 2005
 Contact: spar@toronto.ca

Notes: CMA is Census Metropolitan Area. Data is by Census Tract. Ethnic Origins reflect Total Responses (Single and Multiple Responses combined) and therefore will not add up to 100%. See the Census Dictionary for full definition.