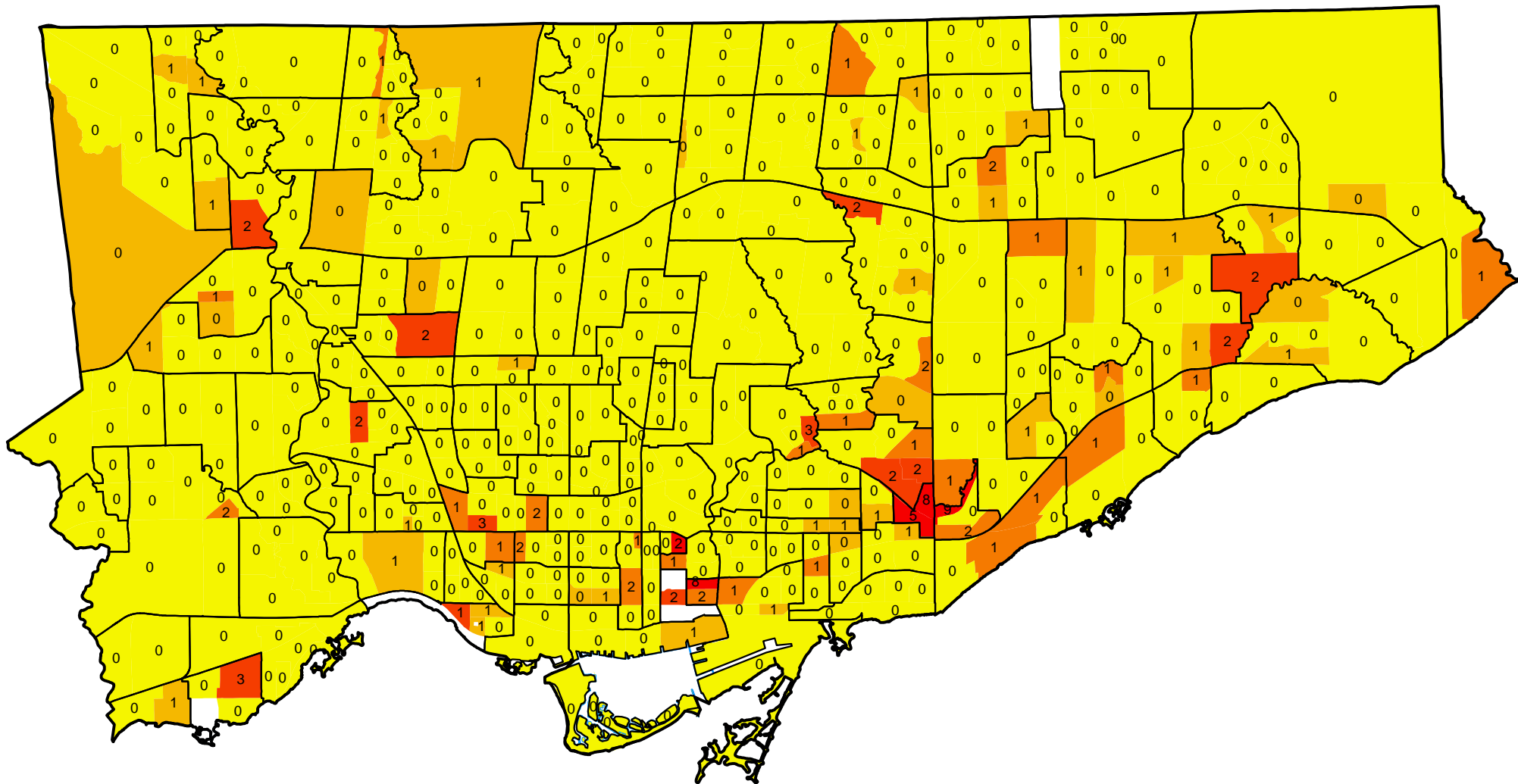
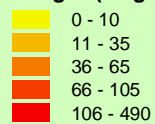


Bengali Home Language by Census Tracts, 2001



Legend

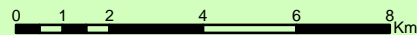
Bengali (single responses)



□ Neighbourhoods

X This language as a % of all home languages (single responses, by census tract)

Notes: Data is presented by Census Tract and overlaid with Neighbourhood boundaries for reference. Distribution is by Natural Breaks.



Toronto Community & Neighbourhood Services
Social Development & Administration

Source:
Data - Canada Census 2001
Mapping - Social Policy Analysis & Research 2004

Copyright City of Toronto 2004. All Rights Reserved.
Created by: Social Policy Analysis & Research
Date of Publication: January, 2004
Contact: spar@toronto.ca