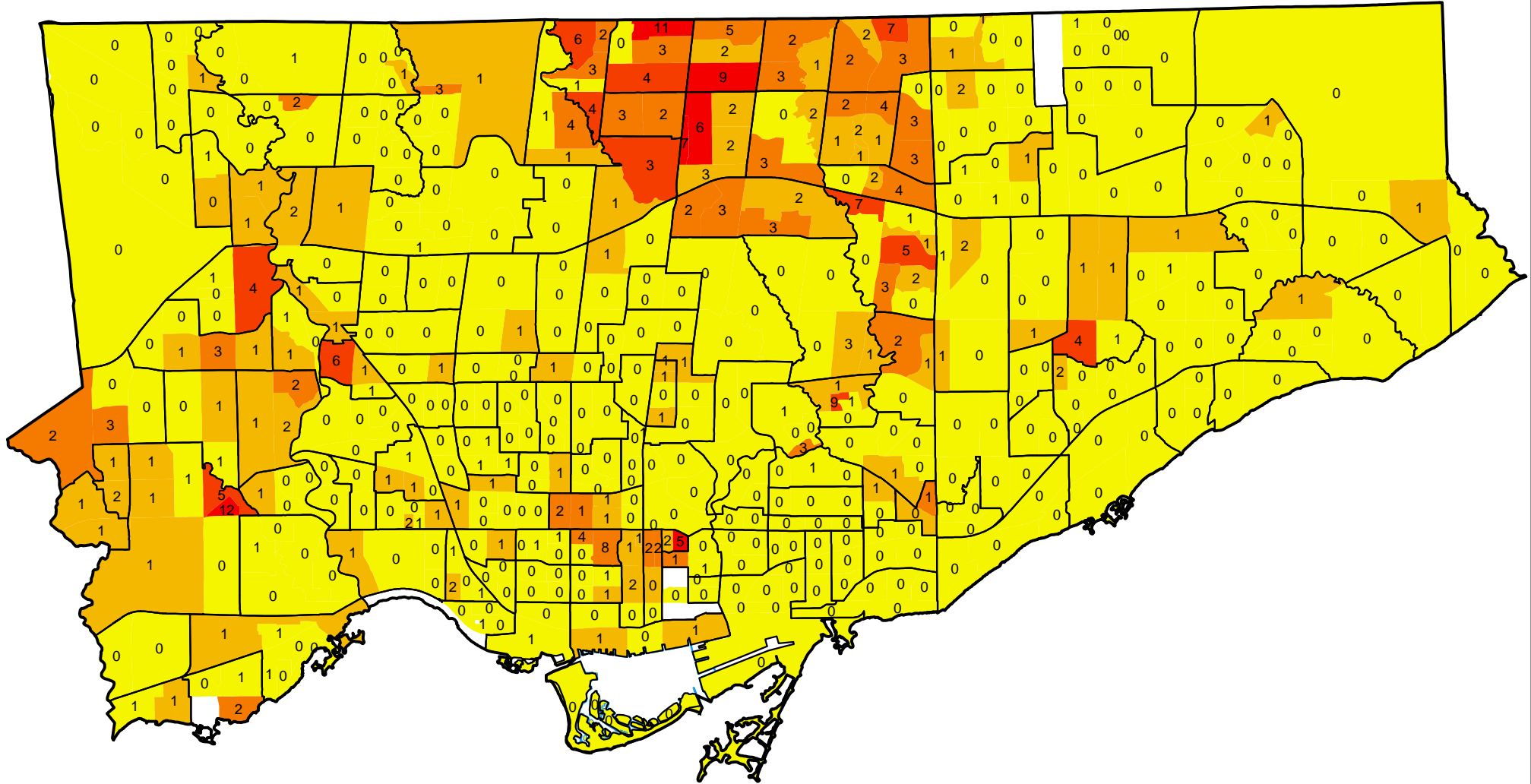


Korean Home Language by Census Tracts, 2001



Legend

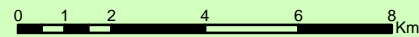
Korean (single responses)

- 0 - 20
- 21 - 65
- 66 - 130
- 131 - 270
- 271 - 500

Neighbourhoods

X This language as a % of all home languages
(single responses, by census tract)

Notes: Data is presented by Census Tract and overlaid with Neighbourhood boundaries for reference. Distribution is by Natural Breaks.



Toronto Community & Neighbourhood Services
Social Development & Administration

Source:
Data - Canada Census 2001
Mapping - Social Policy Analysis & Research 2004

Copyright City of Toronto 2004. All Rights Reserved.
Created by: Social Policy Analysis & Research
Date of Publication: January, 2004
Contact: spar@toronto.ca