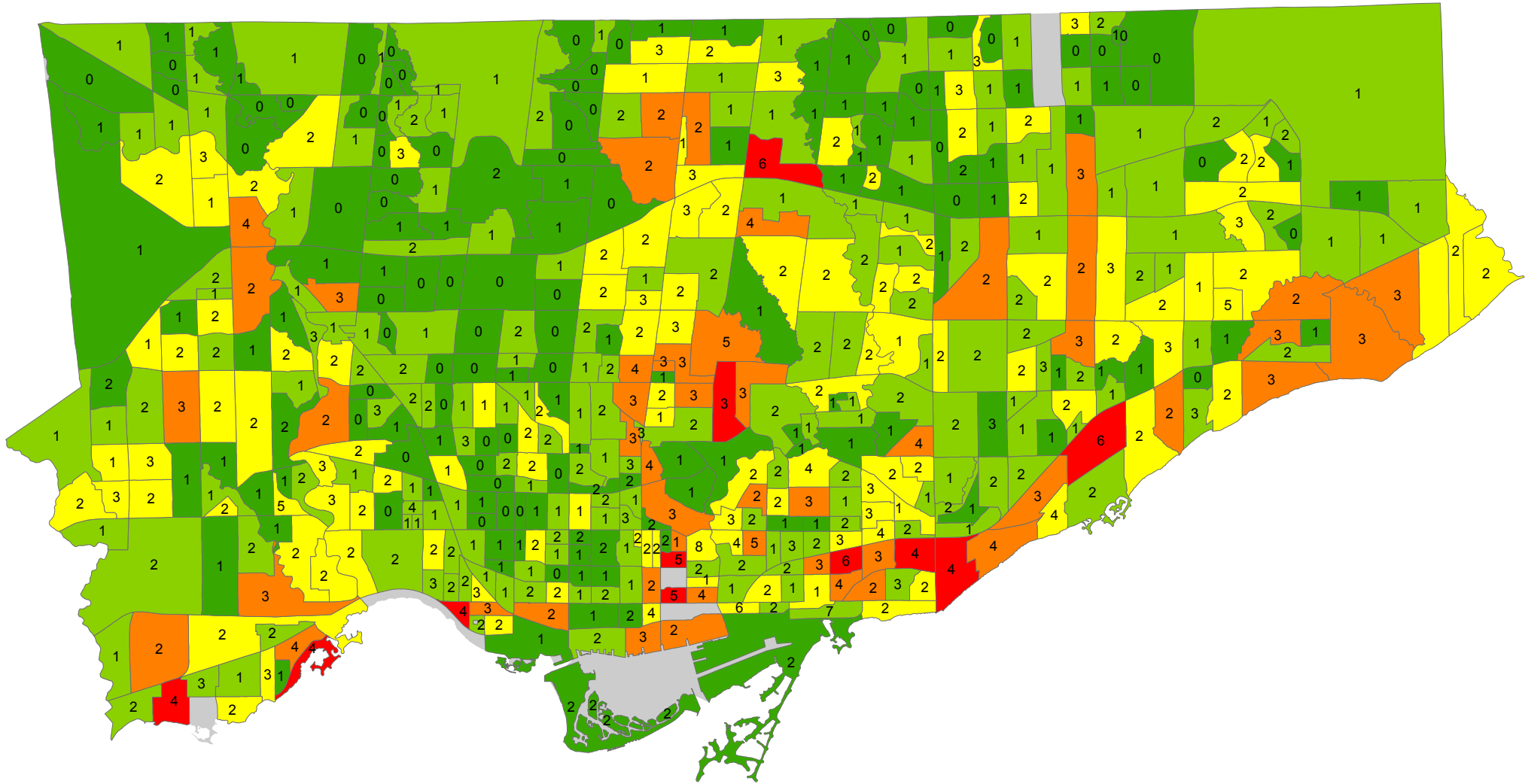


# Protestant N.I.E.\* Population 2001

## Total Persons and Percentage of Population, By Census Tract



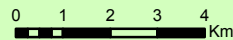
### Legend

#### Protestant N.I.E.\*

- 0 - 40
- 41 - 85
- 86 - 135
- 136 - 215
- 216 - 375

- No Data
- XX Percent of Total Population Registering This Religious Affiliation

\* N.I.E. = Not Included Elsewhere (on the Census form).



Source: Census 2001  
 Copyright 2006 City of Toronto. All Rights Reserved.  
 Prepared by: Social Policy Analysis & Research  
 Publication Date: November 2006  
 Contact: spar@toronto.ca

Classification by Natural Breaks.