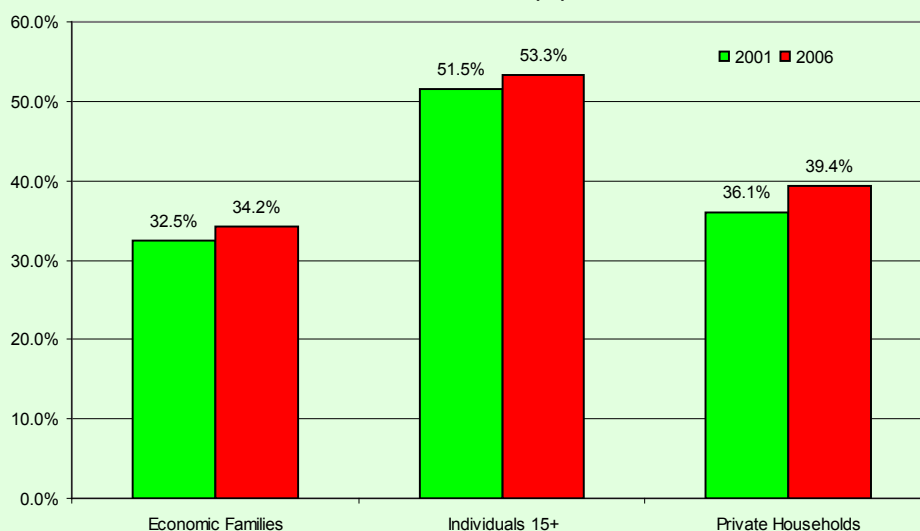


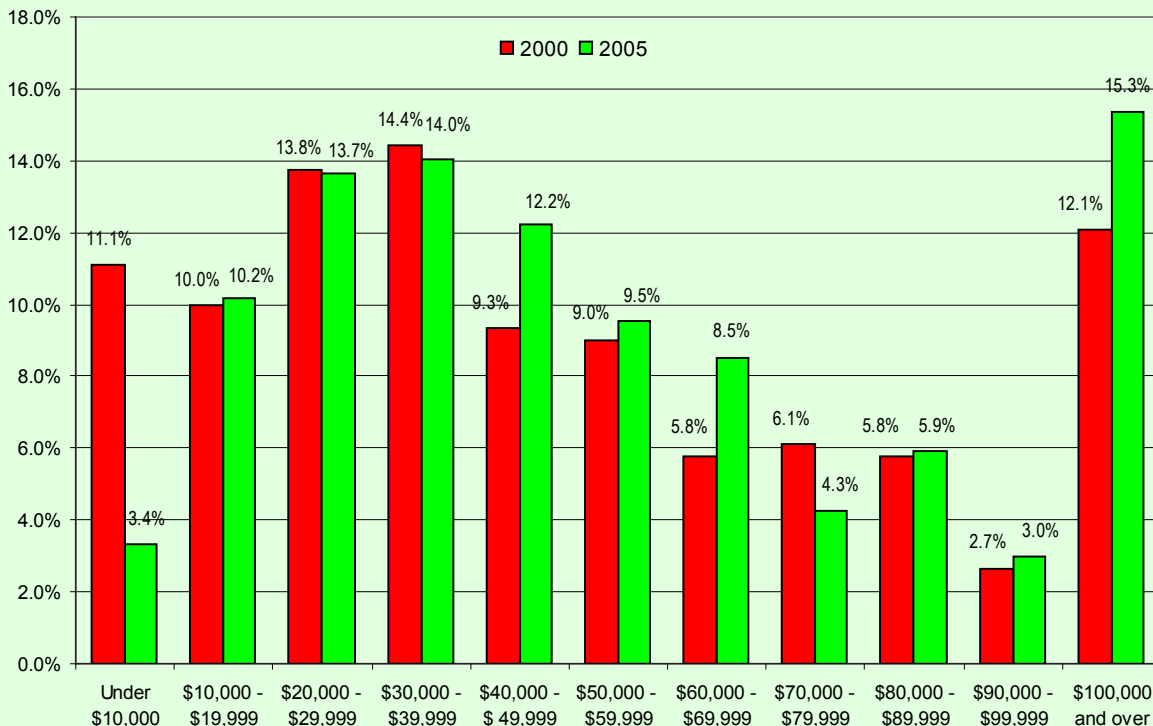
Renter/Owner Characteristics		
	Number	%
Average gross rent \$	796	
Renter spending 30-99% of income <sup>1</sup>	1,355	45.0
Owner payments 30-99% of income <sup>2</sup>	760	35.1
Average value of dwelling \$	303,720	
Average owner major payments \$	1,237	

Incidence of Low Income (%), 2001-2006



Income Distribution by Groups 2005						
Category	Census Family	% of Census Families	Private Household	% of Priv. Hshlds	1-person Private Household	% of 1-person Priv. Hshlds.
Under \$10,000	130	3.4%	360	6.7%	220	16.6%
\$10,000 - \$19,999	395	10.2%	795	14.7%	435	32.8%
\$20,000 - \$29,999	530	13.7%	775	14.4%	185	14.0%
\$30,000 - \$39,999	545	14.0%	730	13.5%	160	12.1%
\$40,000 - \$49,999	475	12.2%	630	11.7%	135	10.2%
\$50,000 - \$59,999	370	9.5%	455	8.4%	55	4.2%
\$60,000 - \$69,999	330	8.5%	415	7.7%	65	4.9%
\$70,000 - \$79,999	165	4.3%	200	3.7%	30	2.3%
\$80,000 - \$89,999	230	5.9%	235	4.4%	10	0.8%
\$90,000 - \$99,999	115	3.0%	145	2.7%	0	0.0%
\$100,000 and over	595	15.3%	655	12.1%	30	2.3%
<b>Total</b>	<b>3,880</b>	<b>100.0%</b>	<b>5,395</b>	<b>100.0%</b>	<b>1,325</b>	<b>100.0%</b>
Average income - \$	64,516		56,775		32,715	
Median income - \$	49,030		42,417		21,751	

### Census Family Income Distribution



### Private Households Income Distribution

