

Weekly Influenza News – Week 5 (January 29, 2012 to February 4, 2012)

Summary of Influenza Activity in Toronto for Week 5

Indicator (Click on the indicator name for more details)	Comparison to previous week*	Description of activity
Reported Cases	Comparable	Overall, the influenza activity in Toronto in week 5 was comparable to the activity in week 4. Fourteen new cases of influenza were reported.
Influenza Subtypes	Same subtypes as previous weeks	No new subtypes were detected in week 5.
Institutional Outbreaks	One influenza outbreak was reported	One influenza outbreak was reported from a Toronto institution in week 5.
Absenteeism in Schools	Comparable	The overall absenteeism rate in week 5 was comparable to the rate in week 4.
ILI Sentinel Physician Consultation Rate	Higher	The physician ILI consultation rate was higher in week 4 than the rate in the previous week.
Overall	Influenza activity in Toronto in week 5 remains low and was comparable to activity in the previous week.	

* These terms do not reflect significant changes, but describe overall observed trends.

Weekly Influenza News - continued

Recent Influenza Reporting:

Overall, influenza activity in Toronto in week 5 was comparable to that observed in week 4. Fourteen new cases of influenza were reported in week 5 (Table 1), eight cases were influenza A, and six cases were subtyped as influenza B.

Influenza data, presented by onset date in Figure 1, show that influenza activity in Toronto remains low and is below the expected level for this time of the year when compared to the previous 10-year average number of reported cases (Table 2).

One new influenza outbreak was reported in a Toronto institution during week 5, the second outbreak of influenza reported to date this season (Table 1).

Table 1. Summary of new and season to date influenza cases and institutional outbreaks by virus type. Reported week 5* (January 29, 2012 to February 4, 2012) and 2011/12 season to date (September 01, 2011 to February 4, 2012).

	Week 5 Cases (%)	Season to Date Cases (%)
Lab-confirmed[†] influenza cases		
Influenza B	6 (43)	31 (40)
Influenza A (H1N1) pdm09	4 (29)	31 (40)
Influenza A (Not Subtyped/No Subtype)	3 (21)	10 (13)
Influenza A (Seasonal H3)	1 (7)	6 (8)
Influenza A [‡] (Other)	0 (0)	0 (0)
Influenza A and B	0 (0)	0 (0)
Total cases	14 (100)	78 (100)
Institutional outbreaks[§]	1	2

Source: Ontario Ministry of Health and Long-Term Care, integrated Public Health Information System (iPHIS), extracted [02/07/2012].

*The week that the diagnosing health unit was first notified of the case's episode.

[†]Lab-confirmed cases include all reports of sporadic influenza cases and a subset of new outbreak associated cases.

[‡] Includes indeterminate, untypeable and other subtypes.

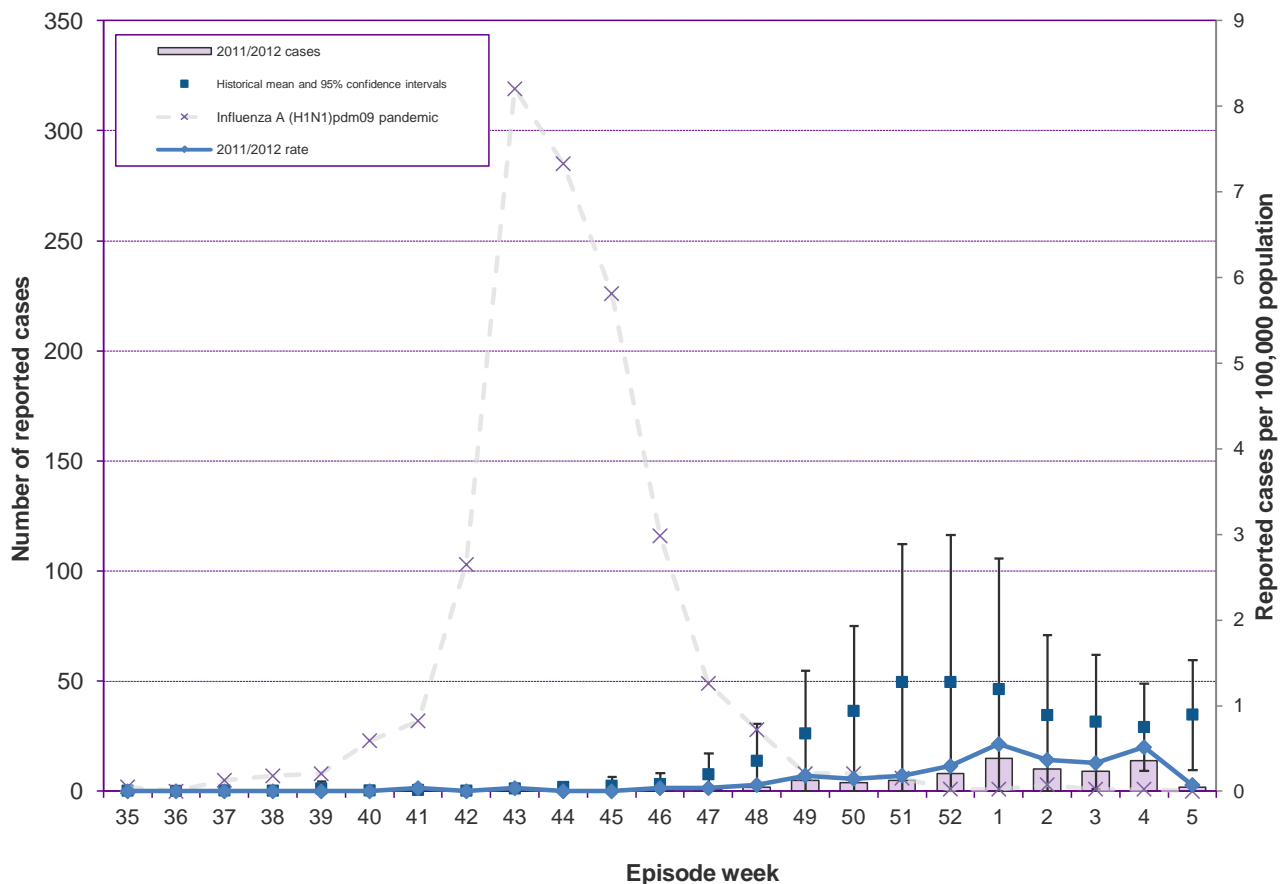
[§]This reflects the number of respiratory outbreaks confirmed to be caused by influenza during the week of interest.

Weekly Influenza News - continued

Influenza Subtype(s):

To date, Toronto influenza A cases subtyped by the National Microbiology Laboratory (NML) have been antigenically characterized as A/Perth/16/2009-like (H3N2) and Influenza A (H1N1)pdm09, which are both included in the 2011/12 influenza trivalent vaccine. Influenza B specimens from Toronto which have been subtyped have been antigenically characterized as B/Brisbane/60/2008-like, which is included in the 2011/12 trivalent influenza vaccine, and B/Wisconsin/01/2010-like, which is not included in the vaccine.

Figure 1. Number and rate* of reported lab-confirmed influenza cases by episode week†. Toronto, comparison of reported cases, 2011/12 season to date and 10-year mean‡ (2001/02 to 2010/11).



Source: Ontario Ministry of Health and Long-Term Care, integrated Public Health Information System (iPHIS), extracted [02/07/2012].

*Cases per 100,000 population. Population source: Intellihealth [December 19, 2011].

†The episode week is the week closest to the date when symptoms first appear.

‡Historical data are divided into 2 groups: 1) Influenza cases reported during the pandemic period (after week 14 in 2008/09 until the end of the 2009/10 season) and 2) all other influenza cases report for the previous 10-years

Weekly Influenza News - continued

Table 2. New lab-confirmed influenza cases reported in week 5 compared to the season to date number of lab-confirmed influenza cases for the 2011/12 season and the 10-yr mean (2001/02 - 2010/11) by age group.

Age group (years)	Number of cases (%)	Number of cases (%) season to date*	
	Week 5	2011/12	10-year mean † (2001/02 - 2010/11)
< 1	3 (21)	10 (13)	39 (10)
1 to 4	1 (7)	15 (19)	62 (17)
5 to 14	1 (7)	10 (13)	34 (9)
15 to 24	1 (7)	2 (3)	16 (4)
25 to 44	2 (14)	11 (14)	40 (11)
45 to 64	3 (21)	17 (22)	36 (10)
65+	3 (21)	13 (17)	147 (39)
Total‡	14 (100)	78 (100)	374 (100)

Source: Ontario Ministry of Health and Long-Term Care, integrated Public Health Information System (iPHIS), extracted [02/07/2012].

*All cases reported since September 1st of each season.

‡The total for season to date may fluctuate as missing ages prevent classification of cases in their week of report. Percentages and the 10-year mean are rounded up.

†All influenza A (H1N1) pdm09 cases reported after week 14 for the 2008/09 season the for the entire 2009/10 season were excluded from the 10-year mean.

Vaccination Rates:

The influenza vaccination rate for all laboratory confirmed reported cases with vaccination history (N=38) was 11%.

Weekly Influenza News - continued

Table 3. Summary of new and season to date influenza hospitalizations and deaths, by virus type. Reported in week 5* (January 29, 2012 to February 4, 2012) and 2011/12 season to date (September 01, 2011 to February 4, 2012).

	Hospitalizations [†]		Deaths [‡]	
	Week 5	Season to date (%)	Week 5	Season to date (%)
Lab-confirmed[§] influenza cases				
Influenza A (H1N1) pdm09	3	15 (48)	0	0 (0)
Influenza B	2	11 (35)	0	0 (0)
Influenza A (Seasonal H3)	1	4 (13)	0	0 (0)
Influenza A (Not Subtyped/No Subtype)	1	1 (3)	0	0 (0)
Influenza A (Other)	0	0 (0)	0	0 (0)
Influenza A and B	0	0 (0)	0	0 (0)
Total Lab-confirmed influenza cases	7	31 (100)	0	0 (0)
Non Lab-confirmed influenza cases	0	3	0	0
Total cases	7	34	0	0

Source: Ontario Ministry of Health and Long-Term Care, integrated Public Health Information System (iPHIS), extracted [02/07/2012].

*The week that the diagnosing health unit was first notified of the case's episode.

†Hospitalizations include both lab-confirmed cases and those with ILI who may have first been reported or ill in previous weeks, but for whom hospitalization status is only being reported during this report week.

‡Newly reported deaths (among sporadic, outbreak associated or ILI cases) may include deaths occurring during this report week and/or deaths which had been reported as new cases/ILI in previous weeks, but who were not deceased when they were originally reported as a case.

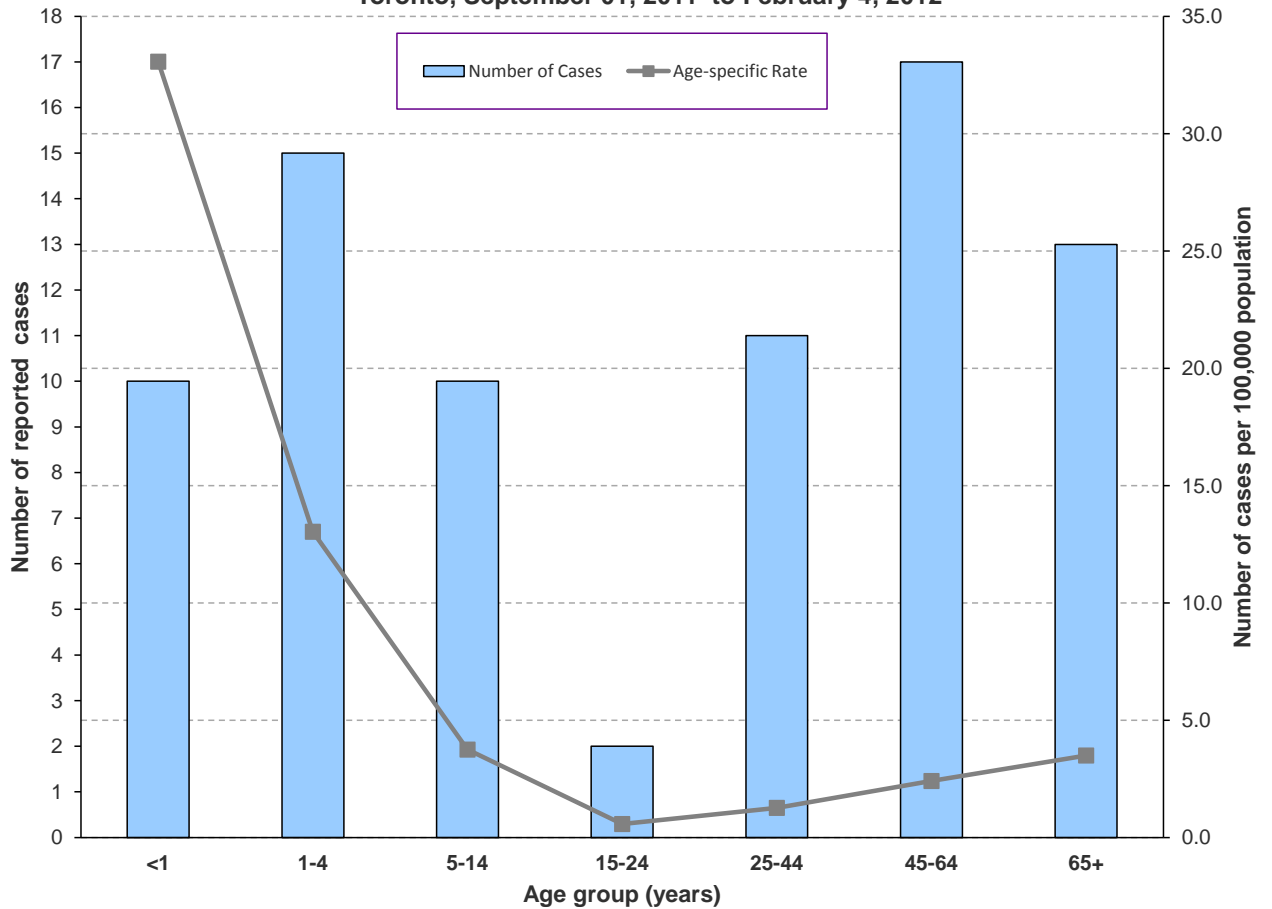
§Lab-confirmed cases include all reports of sporadic influenza cases and a subset of new outbreak associated cases.

|| Includes indeterminate, untypeable and other subtypes.

Percentages for each subtype may not sum to total due to rounding

Weekly Influenza News - continued

Figure 2. Number and rate* of reported lab-confirmed influenza cases by age group.
Toronto, September 01, 2011 to February 4, 2012



Source: Ontario Ministry of Health and Long-Term Care, integrated Public Health Information System (iPHIS), extracted [02/07/2012].
*Cases per 100,000 population. Population source: Intellihealth December 19, 2011

Weekly Influenza News - continued

INSTITUTIONAL OUTBREAKS:

For the purposes of this report, institutions include: long-term care homes, acute care hospitals, chronic care hospitals, special care facilities, retirement homes and rehabilitation hospitals in Toronto.

To date, 37 respiratory outbreaks have been reported this season of which (5%) were influenza outbreaks. Of these, one was a influenza A outbreak and one was an influenza B outbreak (Table 4).

**Table 4: Cumulative number of influenza outbreaks* in institutions by region.
Toronto, September 01, 2011 to February 4, 2012**

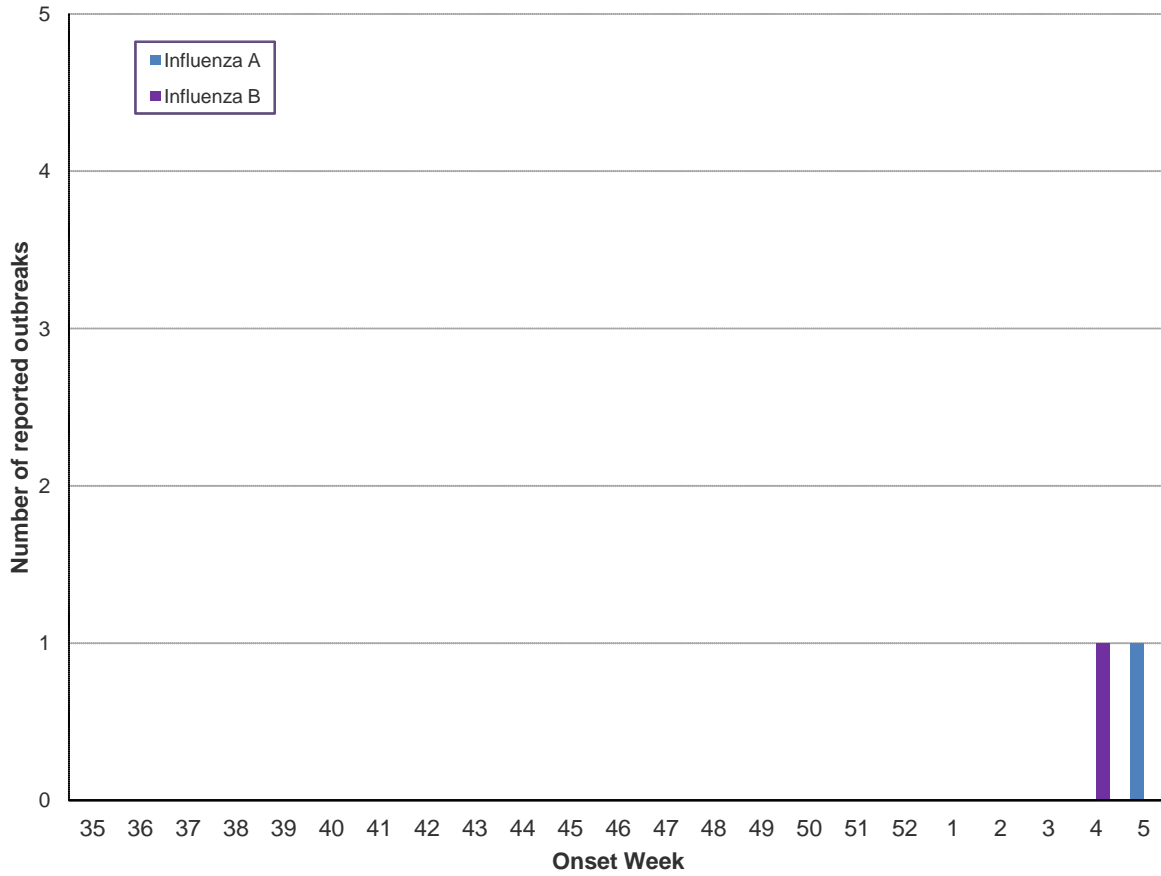
	Region				Total
	East	North	South	West	
Influenza type					
Type A	0	1	0	0	1
Type B	0	1	0	0	1
Type A and B	0	0	0	0	0
Total	0	2	0	0	2
Residents					
Affected	0	16	0	0	16
At risk	0	84	0	0	84
Attack rate (%)	(0)	(19)	(0)	(0)	(19)
Staff					
Affected	0	0	0	0	0
At risk	0	50	0	0	50
Attack rate (%)	(0)	(0)	(0)	(0)	(0)
Related deaths	0	0	0	0	0
Related pneumonia	0	0	0	0	0
Related hospitalizations	0	3	0	0	3

Source: Ontario Ministry of Health and Long-Term Care, integrated Public Health Information System (iPHIS) & CDSU Outbreaks Database, extracted[02/07/2012].

*Number of outbreaks since September 1, 2011.

Please note due to an ongoing reconciliation process between iPHIS and the CDSU outbreaks database, changes in total outbreaks as well as corresponding data are to be expected.

**Figure 3. Number of influenza outbreaks in institutions by onset week*.
Toronto, September 01, 2011 to February 4, 2012**



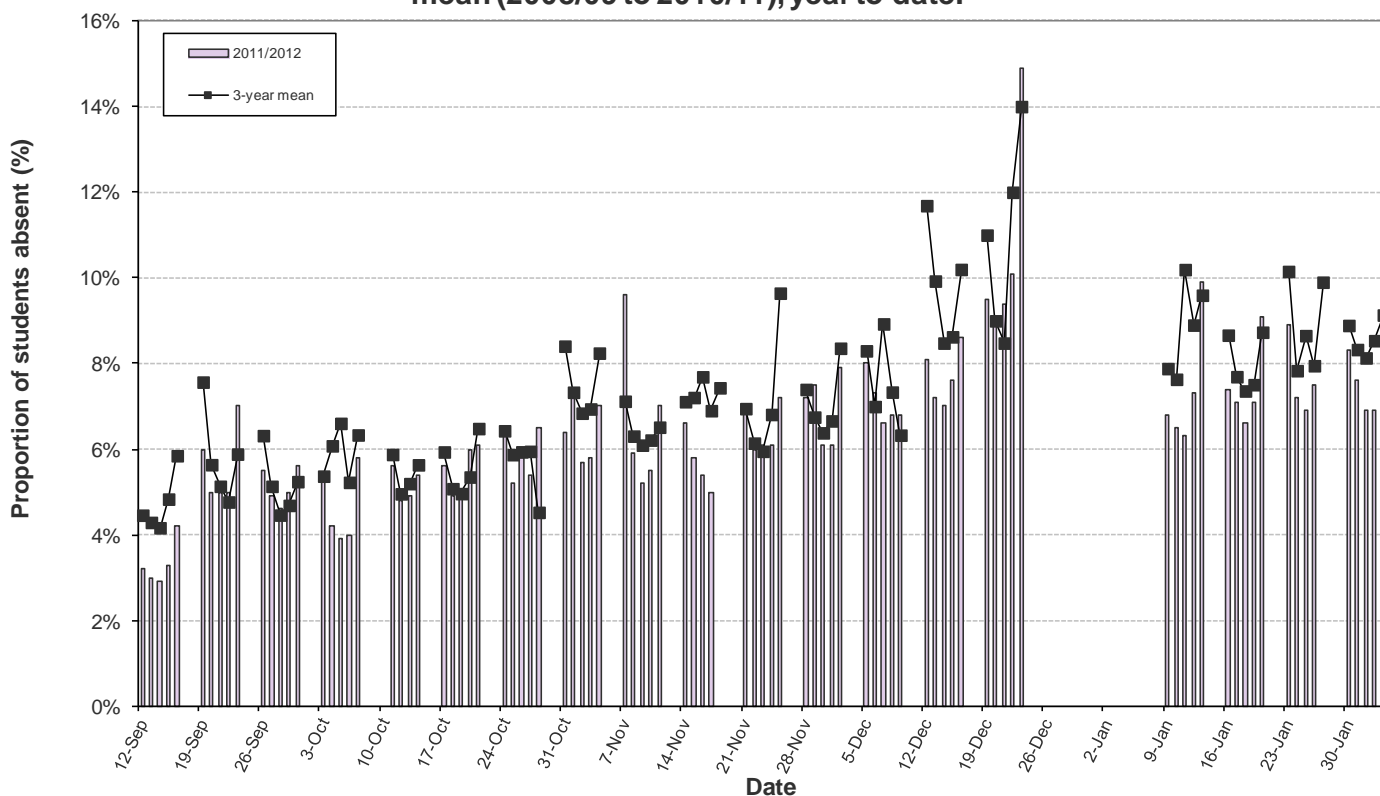
Source: Ontario Ministry of Health and Long-Term Care, integrated Public Health Information System (iPHIS), extracted [02/07/2012].
*Onset week is the week symptoms began for the outbreak's index case.

Weekly Influenza News - continued

Absenteeism in Schools:

Overall absenteeism rates for elementary school children attending both school boards were within the expected values for week 5; 17.3% of all elementary schools had more than 10% absenteeism and the overall absenteeism rate was 7.7% in week 5 (Figure 4).

Figure 4: Overall absenteeism rate for all elementary schools by day. TDSB and TCDSB combined. 2011-2012 school year compared to previous 3-year mean (2008/09 to 2010/11), year to date.



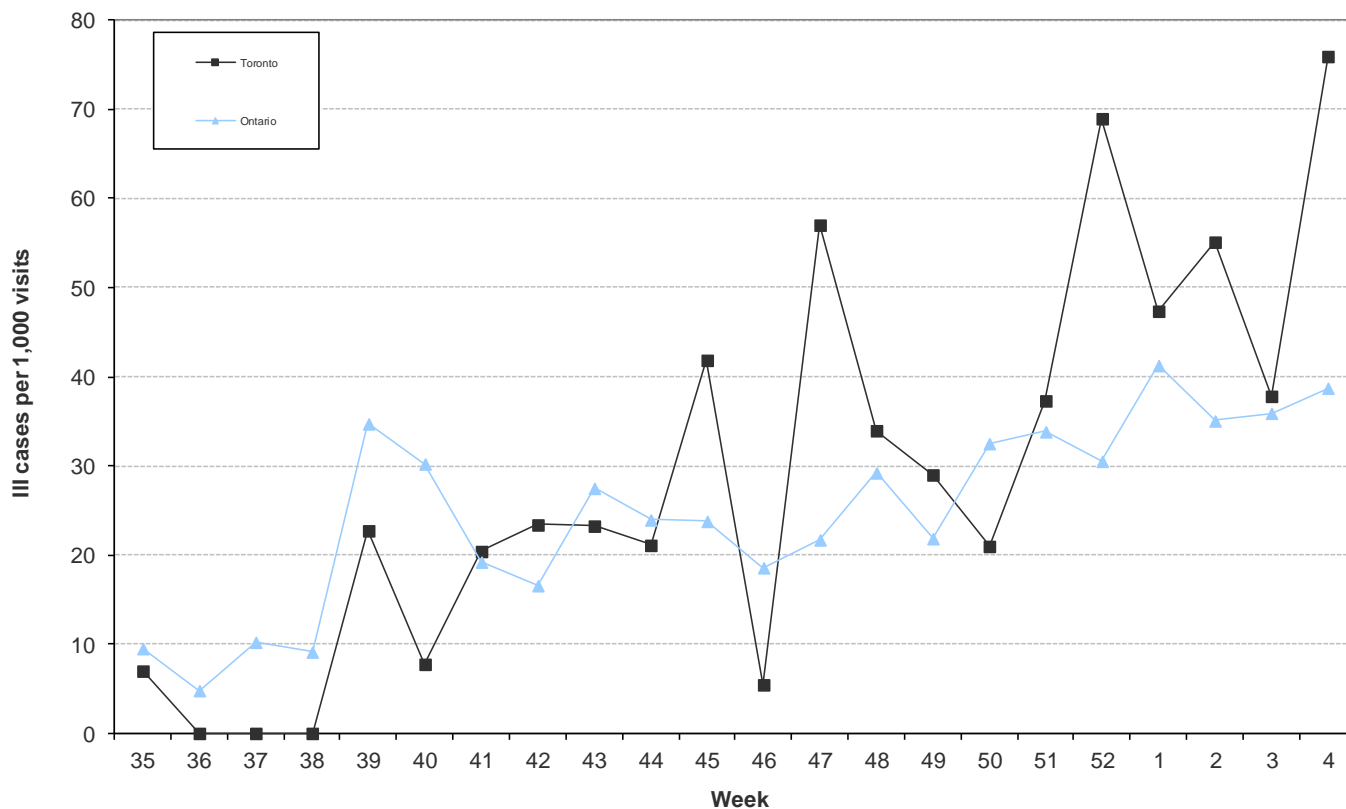
Toronto Public Health (TPH) receives all-cause student absenteeism data weekly from the Toronto District School Board (TDSB) and the Toronto Catholic District School Board (TCDSB) for all elementary schools. Data are received for the previous school week. January 27th, 2012 was a PA day

Weekly Influenza News - continued

ILI Sentinel Physician Consultation Rate:

The Influenza-like illness (ILI) consultation rate for Toronto sentinel physicians in week 4 (76 ILI per 1,000 visits) was higher than the rate in week 3 (38 ILI per 1,000 visits) and was higher than Ontario’s rate (39 ILI per 1,000 visits) for week 4 (Figure 5). Only three sentinel physician sites reported data for week 4 for Toronto compared to seven sites the previous week. This may explain the higher consultation rate for week 4.

**Figure 5: ILI sentinel physician consultation rate, by week.
Toronto and Ontario, September 1, 2011 to January 28, 2012**



Source: Public Health Agency of Canada

Note: The small numbers of sentinel physicians reporting in Toronto can make the ILI rates unstable. For week 4 three sites reported data.

[For related influenza information visit:](#)

ONTARIO

The most recent Laboratory Viruses Respiratory Surveillance Report can be viewed at the following site:
<http://www.oahpp.ca/services/pho-laboratories-surveillance-updates.html>

The most recent Ontario Influenza Bulletin can be viewed at the following site:
<http://www.oahpp.ca/resources/flubulletin.html>

CANADA

The most recent Health Canada FluWatch can be viewed at the following site:
<http://www.phac-aspc.gc.ca/fluwatch/>

INTERNATIONAL

The most recent WHO Influenza – update can be viewed at the following site:
<http://www.who.int/csr/disease/influenza/en/index.html>

The current WHO phase of pandemic alert for avian influenza H5N1 can be viewed at the following site:
<http://www.who.int/influenza/preparedness/pandemic/h5n1phase/en/index.html>

Influenza surveillance weeks, 2011/2012 season		
Week	Start	End
35	28-Aug-11	03-Sep-11
36	04-Sep-11	10-Sep-11
37	11-Sep-11	17-Sep-11
38	18-Sep-11	24-Sep-11
39	25-Sep-11	01-Oct-11
40	02-Oct-11	08-Oct-11
41	09-Oct-11	15-Oct-11
42	16-Oct-11	22-Oct-11
43	23-Oct-11	29-Oct-11
44	30-Oct-11	05-Nov-11
45	06-Nov-11	12-Nov-11
46	13-Nov-11	19-Nov-11
47	20-Nov-11	26-Nov-11
48	27-Nov-11	03-Dec-11
49	04-Dec-11	10-Dec-11
50	11-Dec-11	17-Dec-11
51	18-Dec-11	24-Dec-11
52	25-Dec-11	31-Dec-11
1	01-Jan-12	07-Jan-12
2	08-Jan-12	14-Jan-12
3	15-Jan-12	21-Jan-12
4	22-Jan-12	28-Jan-12
5	29-Jan-12	04-Feb-12
6	05-Feb-12	11-Feb-12
7	12-Feb-12	18-Feb-12
8	19-Feb-12	25-Feb-12
9	26-Feb-12	03-Mar-12
10	04-Mar-12	10-Mar-12
11	11-Mar-12	17-Mar-12
12	18-Mar-12	24-Mar-12
13	25-Mar-12	31-Mar-12
14	01-Apr-12	07-Apr-12
15	08-Apr-12	14-Apr-12
16	15-Apr-12	21-Apr-12
17	22-Apr-12	28-Apr-12
18	29-Apr-12	05-May-12
19	06-May-12	12-May-12
20	13-May-12	19-May-12
21	20-May-12	26-May-12
22	27-May-12	02-Jun-12
23	03-Jun-12	09-Jun-12
24	10-Jun-12	16-Jun-12
25	17-Jun-12	23-Jun-12
26	24-Jun-12	30-Jun-12
27	01-Jul-12	07-Jul-12
28	08-Jul-12	14-Jul-12
29	15-Jul-12	21-Jul-12
30	22-Jul-12	28-Jul-12
31	29-Jul-12	04-Aug-12
32	05-Aug-12	11-Aug-12
33	12-Aug-12	18-Aug-12
34	19-Aug-12	25-Aug-12