

APPENDIX 1 - TABLES AND FIGURES

Table 4: Age-Specific Weights for Direct Standardization

1979-1983		1984-1988		1989-1990	
AgeGroup	Weight	AgeGroup	Weight	AgeGroup	Weight
M0_4	0.056387	M0_4	0.056831	M0_4	0.057105
M5_9	0.055455	M5_9	0.047558	M5_9	0.048057
M10_14	0.062547	M10_14	0.049342	M10_14	0.04408
M15_19	0.077754	M15_19	0.061711	M15_19	0.050713
M20_24	0.099084	M20_24	0.10316	M20_24	0.084506
M25_34	0.208916	M25_34	0.230773	M25_29	0.133996
M35_44	0.131473	M35_44	0.157955	M30_34	0.118894
M45_54	0.114748	M45_54	0.103867	M35_39	0.094069
M55_64	0.093948	M55_64	0.095049	M40_44	0.079692
M65_69	0.036282	M65_74	0.058211	M45_49	0.058843
M70_over	0.063296	M75_over	0.035778	M50_54	0.046447
				M55_59	0.044628
F0_4	0.049981	F0_4	0.050782	M60_64	0.042776
F5_9	0.048763	F5_9	0.04331	M65_74	0.058892
F10_14	0.056879	F10_14	0.043929	M75_84	0.029736
F15_19	0.07124	F15_19	0.056938	M85_over	0.007438
F20_24	0.101112	F20_24	0.102738		
F25_34	0.202927	F25_34	0.221357	F0_4	0.054126
F35_44	0.119402	F35_44	0.145144	F5_9	0.045803
F45_54	0.102999	F45_54	0.096503	F10_14	0.042036
F55_64	0.098126	F55_64	0.095488	F15_19	0.048797
F65_69	0.04274	F65_74	0.07369	F20_24	0.091139
F70_over	0.105968	F75_over	0.070073	F25_29	0.131468
				F30_34	0.113195
				F35_39	0.093296
				F40_44	0.079579
				F45_49	0.059455
				F50_54	0.048121
				F55_59	0.045111
				F60_64	0.044338
				F65_74	0.076907
				F75_84	0.052066
				F85_over	0.020768

M = Males;, F = Females

Table 5: Socio-economic Comparison of Study Neighbourhoods at the Census

Neighbourhood	Population	Median Household Income (K\$)	% Recent Immigrants	% Population Aged 15+ With Less than Grade 9 Education	Unemployment Rate
Census Year 1981					
Near 1	12920	16.4	5.1%	32%	5.5%
Near 2	16440	21.6	2.5%	29%	4.5%
Neighbourhood 10	12080	20.3	5.3%	38%	9.0%
South Riverdale	24175	20	6.9%	26%	6.5%
Neighbourhood 19	12520	27.5	0.2%	10%	2.7%
Neighbourhood 43	9880	25	2.0%	5%	2.8%
Beaches	19125	25.4	0.8%	10%	4.3%
Census Year 1986					
Near 1	12645	25.4	4.0%	26%	8.7%
Near 2	17220	29.3	3.5%	24%	7.3%
Neighbourhood 10	11765	25.3	5.4%	35%	8.9%
South Riverdale	24785	30.4	5.7%	22%	7.9%
Neighbourhood 19	12510	44.4	0.6%	7%	3.6%
Neighbourhood 43	9985	41.2	1.3%	4%	4.9%
Beaches	19105	39	0.6%	6%	5.1%
Census Year 1991					
Near 1	12335	31.1	6.6%	21%	12.6%
Near 2	17945	33.5	5.5%	19%	11.3%
Neighbourhood 10	12280	31.9	15.0%	31%	13.8%
South Riverdale	24850	38.5	9.0%	19%	13.3%
Neighbourhood 19	13240	68.2	0.7%	4%	3.9%
Neighbourhood 43	10010	53.5	2.0%	3%	6.1%
Beaches	18870	53.7	1.6%	4%	6.3%
Census Year 1996					
Near 1	12155	29.9	10.8%	19.6%	13.3%
Near 2	18620	37.9	11.7%	16.9%	12.7%
Neighbourhood 10	12540	32.1	13.7%	24.9%	12.9%
South Riverdale	26105	33.4	14.1%	17.4%	11.8%
Neighbourhood 19	13390	71.3	2.0%	2.0%	4.6%
Neighbourhood 43	10115	53.4	3.4%	3.1%	5.3%
Beaches	19030	56.6	2.1%	2.6%	6.2%

Table 6: All Cause Mortality 1979 - 1983: The Beaches and Comparison Communities

	BEACHES		Neighbourhood 19		Neighbourhood 43		Former City	
	Number	Rate/1000	Number	Rate/1000	Number	Rate/1000	Number	Rate/1000
Male_total	380	8.12	268	9.42	154	7.14	13791	10.08
M0_4	4	1.42	5	2.33	7	7.57	228	2.96
M5_9	1	0.37	0	0.00	0	0.00	19	0.25
M10_14	0	0.00	0	0.00	0	0.00	17	0.20
M15_19	0	0.00	0	0.00	0	0.00	68	0.64
M20_24	4	0.95	1	0.52	2	1.10	149	1.10
M25_34	14	1.20	3	0.52	0	0.00	365	1.28
M35_44	14	2.12	2	0.45	8	2.30	505	2.81
M45_54	27	5.71	14	4.52	11	4.40	1237	7.88
M55_64	86	21.50	33	13.61	19	10.27	2462	19.16
M65_69	46	34.07	33	28.09	13	16.77	1689	34.04
M70_over	184	71.46	177	63.78	94	63.73	7052	81.46
Fem_total	340	6.96	278	8.14	208	7.48	11607	7.97
F0_4	3	1.28	2	1.03	2	1.95	244	3.35
F5_9	0	0.00	0	0.00	0	0.00	19	0.27
F10_14	0	0.00	0	0.00	0	0.00	15	0.18
F15_19	0	0.00	1	0.53	0	0.00	38	0.37
F20_24	1	0.21	2	0.94	2	0.79	57	0.39
F25_34	2	0.17	1	0.14	1	0.14	183	0.62
F35_44	7	1.14	3	0.70	9	2.42	259	1.49
F45_54	16	3.50	5	1.50	7	2.57	628	4.18
F55_64	27	5.78	26	7.27	16	6.15	1247	8.72
F65_69	34	17.00	22	13.13	12	9.06	1005	16.14
F70_over	250	51.81	216	40.95	159	44.79	7912	51.24
Standardized Male		9.16		7.20		6.95		10.10
Standard Error		1.18		1.20		1.39		0.21
Standardized Female		7.40		6.07		6.50		7.97
Standard Error		1.23		1.24		1.43		0.22

Table 7: All Cause Mortality 1984 - 1988: The Beaches and Comparison Communities

	BEACHES		Neighbourhood 19		Neighbourhood 43		Former City	
	Number	Rate/1000	Number	Rate/1000	Number	Rate/1000	Number	Rate/1000
Male_total	302	6.53	239	8.38	167	7.50	13366	9.00
M0_4	0	0.00	1	0.40	2	1.67	223	2.64
M5_9	2	0.76	1	0.56	0	0.00	16	0.23
M10_14	0	0.00	0	0.00	1	1.21	21	0.29
M15_19	0	0.00	0	0.00	0	0.00	54	0.59
M20_24	0	0.00	1	0.63	4	2.22	136	0.89
M25_34	8	0.72	4	0.72	3	0.53	422	1.23
M35_44	15	1.64	6	1.04	3	0.67	625	2.66
M45_54	27	6.17	10	3.51	13	5.84	1075	6.97
M55_64	47	12.97	36	14.55	29	15.26	2423	17.16
M65_74	75	35.29	44	27.08	39	31.20	3156	36.5
M75_over	128	96.60	136	89.18	73	81.11	5215	98.12
Fem_total	282	5.73	269	7.91	204	7.38	12090	7.67
F0_4	6	2.20	3	1.32	6	5.85	264	3.3
F5_9	0	0.00	0	0.00	1	1.11	26	0.38
F10_14	0	0.00	0	0.00	0	0.00	10	0.14
F15_19	2	0.80	1	0.66	0	0.00	30	0.33
F20_24	1	0.23	0	0.00	1	0.43	47	0.29
F25_34	1	0.09	1	0.14	2	0.29	169	0.48
F35_44	7	0.80	6	0.97	3	0.61	278	1.22
F45_54	11	2.47	6	2.14	4	1.58	482	3.17
F55_64	22	5.75	20	6.11	23	9.39	1181	7.85
F65_74	70	20.00	51	18.55	40	16.49	2173	18.71
F75_over	162	55.38	181	58.39	124	53.33	7430	67.29
Standardized Male		7.85		6.99		7.39		9.01
Standard Error		0.99		1.01		1.26		0.17
Standardized Female		6.46		6.52		6.55		7.67
Standard Error		0.85		0.88		1.02		0.15

Table 8: All Cause Mortality 1989 - 1990: The Beaches and Comparison Communities

	BEACHES		Neighborhood 19		Neighbourhood 43		Former City	
	Number	Rate/1000	Number	Rate/1000	Number	Rate/1000	Number	Rate/1000
Male_total	123	6.77	94	7.74	46	5.13	5400	8.69
M0_4	3	2.83	2	1.96	1	1.96	106	2.99
M5_9	0	0.00	1	1.20	0	0.00	4	0.13
M10_14	0	0.00	0	0.00	0	0.00	3	0.11
M15_19	0	0.00	0	0.00	1	2.56	23	0.73
M20_24	1	0.86	0	0.00	1	1.67	49	0.93
M25_29	0	0.00	2	1.87	1	0.84	101	1.21
M30_34	3	1.55	1	0.78	0	0.00	129	1.75
M35_39	3	1.48	0	0.00	2	2.15	169	2.89
M40_44	1	0.53	2	1.64	1	1.14	205	4.14
M45_49	1	0.75	1	1.08	2	3.03	183	5.01
M50_54	2	2.47	3	5.26	0	0.00	230	7.97
M55_59	8	10.67	2	4.08	3	6.98	356	12.84
M60_64	10	15.38	7	14.58	5	13.89	504	18.97
M65_74	27	29.67	18	26.47	10	21.28	1216	33.24
M75_84	45	107.14	29	70.73	13	43.33	1369	74.12
M85_over	19	158.33	26	185.71	6	100.00	753	162.99
Fem_total	116	5.92	97	6.76	74	6.69	4745	7.30
F0_4	3	2.80	3	3.13	1	2.22	103	3.06
F5_9	0	0.00	0	0.00	0	0.00	14	0.49
F10_14	0	0.00	0	0.00	0	0.00	1	0.04
F15_19	0	0.00	0	0.00	0	0.00	9	0.30
F20_24	0	0.00	1	1.20	0	0.00	18	0.32
F25_29	0	0.00	0	0.00	1	0.66	34	0.42
F30_34	0	0	0	0	0	0	35	0.50
F35_39	1	0.48	1	0.72	1	0.97	49	0.85
F40_44	1	0.54	2	1.44	2	1.89	74	1.50

F45_49	1	0.78	1	1.08	1	1.20	69	1.87
F50_54	1	1.11	1	1.61	1	2.08	93	3.11
F55_59	4	5.41	0	0.00	3	6.38	164	5.85
F60_64	4	6.45	5	8.62	3	6.12	261	9.48
F65_74	16	12.40	15	13.89	9	12.86	809	16.94
F75_84	45	50.56	38	46.91	26	37.68	1487	45.98
F85_over	40	137.93	30	75.00	26	123.81	1525	118.22
Standardized Male		8.00		6.80		5.16		8.69
Standard Error		0.97		0.98		1.02		0.16
Standardized Female		7.32		6.05		6.70		7.64
Standard Error		0.92		0.84		1.06		0.15

Table 9: Summary of Standardized Mortality Rates for The Beaches Group: All Causes of Death

1979 - 1983

	BEACHES		Neighbourhood 19		Neighbourhood 43		Former City	
	Number	Rate/1000	Number	Rate/1000	Number	Rate/1000	Number	Rate/1000
Standardized Male	380	9.16	268	7.20	154	6.95	13791	10.10
Standard Error		1.18		1.20		1.39		0.21
Standardized Female	340	7.40	278	6.07	208	6.50	11607	7.97
Standard Error		1.23		1.24		1.43		0.22

1984-1988

	BEACHES		Neighbourhood 19		Neighbourhood 43		All Toronto (former City)	
	Number	Rate/1000	Number	Rate/1000	Number	Rate/1000	Number	Rate/1000
Standardized Male	302	7.85	239	6.99	167	7.39	13366	9.01
Standard Error		0.99		1.01		1.26		0.17
Standardized Female	282	6.46	269	6.52	204	6.55	12090	7.67
Standard Error		0.85		0.88		1.02		0.15

1989-1990

	BEACHES		Neighbourhood 19		Neighbourhood 43		All Toronto (former City)	
	Number	Rate/1000	Number	Rate/1000	Number	Rate/1000	Number	Rate/1000
Standardized Male	123	8.00	94	6.80	46	5.16	5400	8.69
Standard Error		0.97		0.98		1.02		0.16
Standardized Female	116	7.32	97	6.05	74	6.70	4745	7.64
Standard Error		0.92		0.84		1.06		0.15

Table 10: Summary of Standardized Rates for The Beaches Group: Circulatory Causes of Death**1979 - 1983**

	BEACHES		Neighbourhood 19		Neighbourhood 43		All Toronto (former City)	
	Number	Rate/1000	Number	Rate/1000	Number	Rate/1000	Number	Rate/1000
Standardized Male	159	3.88	136	3.64	75	3.31	5618	4.11
Standard Error		0.79		1.40		1.05		0.14
Standardized Female	179	3.91	131	2.72	87	2.64	5255	3.61
Standard Error		0.95		1.39		0.99		0.16

1984-1988

	BEACHES		Neighbourhood 19		Neighbourhood 43		All Toronto (former City)	
	Number	Rate/1000	Number	Rate/1000	Number	Rate/1000	Number	Rate/1000
Standardized Male	117	3.11	102	2.89	51	2.25	4633	3.12
Standard Error		0.51		0.59		0.60		0.08
Standardized Female	116	2.72	118	2.80	74	2.30	4860	3.08
Standard Error		0.51		0.59		0.57		0.09

1989-1990

	BEACHES		Neighbourhood 19		Neighbourhood 43		All Toronto (former City)	
	Number	Rate/1000	Number	Rate/1000	Number	Rate/1000	Number	Rate/1000
Standardized Male	40	2.69	30	2.23	17	1.42	1626	2.62
Standard Error		0.49		0.57		0.54		0.08
Standardized Female	47	3.01	36	2.16	23	2.12	1713	2.76
Standard Error		0.47		0.48		0.54		0.08

Table 11: Summary of Standardized Rates for The Beaches Group: Respiratory Causes of Death

1979 - 1983

	BEACHES		Neighbourhood 19		Neighbourhood 43		All Toronto (former City)	
	Number	Rate/1000	Number	Rate/1000	Number	Rate/1000	Number	Rate/1000
Standardized Male	29	0.71	15	0.37	8	0.36	1094	0.80
Standard Error		0.37		0.49		0.34		0.06
Standardized Female	17	0.37	16	0.38	11	0.33	707	0.49
Standard Error		0.28		0.33		0.36		0.06

1984-1988

	BEACHES		Neighbourhood 19		Neighbourhood 43		All Toronto (former City)	
	Number	Rate/1000	Number	Rate/1000	Number	Rate/1000	Number	Rate/1000
Standardized Male	30	0.80	19	0.48	13	0.55	1171	0.79
Standard Error		0.27		0.23		0.29		0.04
Standardized Female	21	0.48	18	0.42	8	0.24	909	0.58
Standard Error		0.22		0.22		0.19		0.04

1989-1990

	BEACHES		Neighbourhood 19		Neighbourhood 43		All Toronto (former City)	
	Number	Rate/1000	Number	Rate/1000	Number	Rate/1000	Number	Rate/1000
Standardized Male	12	0.79	10	0.62	1	0.13	478	0.77
Standard Error		0.32		0.27		0.18		0.05
Standardized Female	5	0.32	6	0.37	6	0.58	400	0.64
Standard Error		0.20		0.21		0.34		0.04

Table 12: Summary of Standardized Rates for The Beaches Group: All Cancer Causes of Death**1979 - 1983**

	BEACHES		Neighbourhood 19		Neighbourhood 43		All Toronto (former City)	
	Number	Rate/1000	Number	Rate/1000	Number	Rate/1000	Number	Rate/1000
Standardized Male	91	2.20	66	1.80	40	1.80	3289	2.41
Standard Error		0.55		0.96		0.73		0.10
Standardized Female	88	1.91	86	1.97	57	1.81	2841	1.95
Standard Error		0.57		1.07		0.73		0.11

1984-1988

	BEACHES		Neighbourhood 19		Neighbourhood 43		All Toronto (former City)	
	Number	Rate/1000	Number	Rate/1000	Number	Rate/1000	Number	Rate/1000
Standardized Male	86	2.26	69	2.19	62	2.78	3446	2.32
Standard Error		0.45		0.56		0.70		0.07
Standardized Female	91	2.04	68	1.76	67	2.22	3035	1.93
Standard Error		0.44		0.47		0.60		0.07

1989-1990

	BEACHES		Neighbourhood 19		Neighbourhood 43		All Toronto (former City)	
	Number	Rate/1000	Number	Rate/1000	Number	Rate/1000	Number	Rate/1000
Standardized Male	30	1.95	36	2.70	14	1.54	1342	2.16
Standard Error		0.50		0.64		0.58		0.08
Standardized Female	33	2.04	29	1.92	25	2.32	1195	1.92
Standard Error		0.50		0.50		0.66		0.08

Table 13: Summary of Standardized Rates for The Beaches Group: Lung Cancer Deaths

1979 - 1983

	BEACHES		Neighbourhood 19		Neighbourhood 43		All Toronto (former City)	
	Number	Rate/1000	Number	Rate/1000	Number	Rate/1000	Number	Rate/1000
Standardized Male	30	0.74	17	0.46	9	0.43	1049	0.77
	Standard Error	0.30		0.49		0.30		0.06
Standardized Female	8	0.17	10	0.24	7	0.23	326	0.22
	Standard Error	0.16		0.34		0.23		0.03

1984-1988

	BEACHES		Neighbourhood 19		Neighbourhood 43		All Toronto (former City)	
	Number	Rate/1000	Number	Rate/1000	Number	Rate/1000	Number	Rate/1000
Standardized Male	30	0.79	18	0.57	16	0.73	1076	0.72
	Standard Error	0.26		0.27		0.36		0.04
Standardized Female	21	0.47	11	0.29	8	0.24	498	0.32
	Standard Error	0.22		0.19		0.20		0.03

1989-1990

	BEACHES		Neighbourhood 19		Neighbourhood 43		All Toronto (former City)	
	Number	Rate/1000	Number	Rate/1000	Number	Rate/1000	Number	Rate/1000
Standardized Male	5	0.31	10	0.74	1	0.12	388	0.62
	Standard Error	0.20		0.35		0.17		0.04
Standardized Female	4	0.24	9	0.60	4	0.37	177	0.28
	Standard Error	0.17		0.28		0.26		0.03

Table 14: Summary of Standardized Rates for The Beaches Group: Brain Cancer Deaths**1979 - 1983**

	BEACHES		Neighbourhood 19		Neighbourhood 43		All Toronto (former City)	
	Number	Rate/1000	Number	Rate/1000	Number	Rate/1000	Number	Rate/1000
Standardized Male	3	0.07	1	0.02	1	0.05	63	0.05
Standard Error		0.09		0.13		0.10		0.01
Standardized Female	6	0.13	1	0.02	1	0.04	60	0.04
Standard Error		0.13		0.13		0.07		0.01

1984-1988

	BEACHES		Neighbourhood 19		Neighbourhood 43		All Toronto (former City)	
	Number	Rate/1000	Number	Rate/1000	Number	Rate/1000	Number	Rate/1000
Standardized Male	1	0.03	2	0.06	7	0.32	76	0.05
Standard Error		0.05		0.08		0.28		0.01
Standardized Female	2	0.05	0	0.00	3	0.10	47	0.03
Standard Error		0.07		0.00		0.13		0.01

1989-1990

	BEACHES		Neighbourhood 19		Neighbourhood 43		All Toronto (former City)	
	Number	Rate/1000	Number	Rate/1000	Number	Rate/1000	Number	Rate/1000
Standardized Male	0	0.00	0	0.00	1	0.12	38	0.06
Standard Error		0.00		0.00		0.17		0.01
Standardized Female	0	0.00	1	0.06	0	0.00	22	0.04
Standard Error		0.00		0.09		0.00		0.01

Table 15: Summary of Standardized Rates for The Beaches Group: Hematologic and Lymphatic Cancer Deaths

1979 - 1983

	BEACHES		Neighbourhood 19		Neighbourhood 43		All Toronto (former City)	
	Number	Rate/1000	Number	Rate/1000	Number	Rate/1000	Number	Rate/1000
Standardized Male	9	0.19	9	0.26	2	0.09	270	0.20
Standard Error		0.15		0.32		0.14		0.03
Standardized Female	9	0.19	7	0.15	5	0.16	242	0.17
Standard Error		0.15		0.20		0.16		0.02

1984-1988

	BEACHES		Neighbourhood 19		Neighbourhood 43		All Toronto (former City)	
	Number	Rate/1000	Number	Rate/1000	Number	Rate/1000	Number	Rate/1000
Standardized Male	5	0.11	8	0.28	7	0.32	293	0.20
Standard Error		0.09		0.21		0.28		0.02
Standardized Female	6	0.13	3	0.07	3	0.10	251	0.16
Standard Error		0.11		0.09		0.13		0.02

1989-1990

	BEACHES		Neighbourhood 19		Neighbourhood 43		All Toronto (former City)	
	Number	Rate/1000	Number	Rate/1000	Number	Rate/1000	Number	Rate/1000
Standardized Male	3	0.20	2	0.15	1	0.13	118	0.19
Standard Error		0.16		0.15		0.18		0.02
Standardized Female	3	0.19	4	0.26	1	0.08	114	0.18
Standard Error		0.15		0.19		0.11		0.02

Table 16: All Cause Mortality 1979 - 1983: South Riverdale and Comparison Communities

	South Riverdale		Neighbourhood 10		Near 1		Near 2		Former City	
	Number	Rate/1000	Number	Rate/1000	Number	Rate/1000	Number	Rate/1000	Number	Rate/1000
Male_total	673	11.00	223	7.45	302	9.74	406	10.07	13791	10.08
M0_4	13	3.47	2	0.89	6	2.64	9	3.64	228	2.96
M5_9	3	0.73	3	1.50	1	0.39	0	0.00	19	0.25
M10_14	1	0.20	0	0.00	0	0.00	1	0.34	17	0.20
M15_19	9	1.58	0	0.00	3	1.01	2	0.54	68	0.64
M20_24	15	2.33	0	0.00	2	0.73	3	0.77	149	1.10
M25_34	19	1.60	4	0.68	8	1.48	4	0.54	365	1.28
M35_44	40	5.50	7	1.68	12	2.89	17	3.35	505	2.81
M45_54	97	13.86	29	8.79	26	8.52	41	9.06	1237	7.88
M55_64	132	24.44	38	14.48	44	19.78	83	21.84	2462	19.16
M65_69	86	47.78	37	33.64	38	34.55	47	32.41	1689	34.04
M70_over	258	86.00	103	69.83	162	84.16	199	85.59	7052	81.46
Fem_total	515	8.63	163	5.35	224	6.67	292	6.97	11607	7.97
F0_4	9	2.54	15	6.98	1	0.42	10	3.74	244	3.35
F5_9	1	0.26	0	0.00	0	0.00	0	0.00	19	0.27
F10_14	0	0.00	0	0.00	0	0.00	2	0.67	15	0.18
F15_19	4	0.75	1	0.44	1	0.34	1	0.27	38	0.37
F20_24	6	1.04	0	0.00	1	0.32	0	0.00	57	0.39
F25_34	14	1.24	4	0.69	2	0.34	4	0.55	183	0.62
F35_44	15	2.33	5	1.36	6	1.59	7	1.53	259	1.49
F45_54	31	4.88	12	3.61	17	5.96	23	5.03	628	4.18
F55_64	65	12.09	26	9.12	23	8.36	41	9.76	1247	8.72
F65_69	43	21.77	15	13.95	20	12.90	29	16.81	1005	16.14
F70_over	327	63.19	85	38.20	153	45.00	175	50.00	7912	51.24
Standardized Male		12.72		8.60		10.45		10.58		10.10
Standard Error	1.33		2.09		2.12		2.01		0.21	
Standardized Female		10.14		6.59		7.09		8.03		7.97
Standard Error	1.40		1.96		2.37		2.39		0.22	

Table 17: All Cause Mortality 1984 - 1988: South Riverdale and Comparison

	South Riverdale		Neighbourhood 10		Near 1		Near 2		Former City	
	Number	Rate/1000	Number	Rate/1000	Number	Rate/1000	Number	Rate/1000	Number	Rate/1000
Male_total	559	8.95	212	7.24	278	9.04	398	9.42	13366	9.00
M0_4	12	2.96	2	1.01	6	2.53	3	1.03	223	2.64
M5_9	0	0.00	0	0.00	0	0.00	1	0.43	16	0.23
M10_14	0	0.00	1	0.62	2	0.90	2	0.78	21	0.29
M15_19	1	0.21	3	1.48	0	0.00	1	0.33	54	0.59
M20_24	8	1.15	3	0.98	0	0.00	5	1.15	136	0.89
M25_34	29	2.05	8	1.28	7	1.17	14	1.55	422	1.23
M35_44	29	3.21	11	2.51	22	5.06	16	2.77	625	2.66
M45_54	51	8.46	13	4.06	19	6.28	21	4.77	1075	6.97
M55_64	118	21.85	40	15.09	48	17.94	96	24.15	2423	17.16
M65_74	131	44.79	56	33.43	73	39.46	92	34.07	3156	36.50
M75_over	180	105.88	75	90.91	101	103.59	147	113.08	5215	98.12
Fem_total	523	8.50	147	4.98	221	6.81	289	6.59	12090	7.67
F0_4	11	2.91	5	2.70	2	0.91	3	1.04	264	3.30
F5_9	1	0.31	0	0.00	0	0.00	1	0.43	26	0.38
F10_14	1	0.27	0	0.00	1	0.49	2	0.84	10	0.14
F15_19	2	0.46	0	0.00	0	0.00	1	0.34	30	0.33
F20_24	2	0.31	0	0.00	1	0.34	1	0.24	47	0.29
F25_34	11	0.86	2	0.34	4	0.63	6	0.69	169	0.48
F35_44	11	1.35	4	0.99	4	0.91	5	0.86	278	1.22
F45_54	19	3.21	6	2.03	9	3.05	16	3.86	482	3.17
F55_64	61	11.19	13	4.44	20	7.27	33	7.06	1181	7.85
F65_74	77	20.26	28	14.74	55	21.57	78	23.82	2173	18.71
F75_over	327	90.83	89	65.93	125	64.10	143	61.51	7430	67.29
Standardized Male		10.63		8.03		9.62		9.89		9.01
Standard Error		1.14		1.10		0.17		0.17		0.17
Standardized Female		9.85		6.68		7.44		7.54		7.67
Standard Error		1.03		0.88		0.15		0.15		0.15

Table 17B: All Cause Mortality 1989 - 1990: South Riverdale and Comparison Communities

	South Riverdale		Neighbourhood 10		Former City	
	Number	Rate/1000	Number	Rate/1000	Number	Rate/1000
Male_total	201	7.91	80	6.49	5400	8.69
M0_4	2	1.17	3	3.90	106	2.99
M5_9	0	0.00	0	0.00	4	0.13
M10_14	0	0.00	0	0.00	3	0.11
M15_19	2	1.35	0	0.00	23	0.73
M20_24	2	0.86	0	0.00	49	0.93
M25_29	2	0.60	2	1.37	101	1.21
M30_34	8	2.42	1	0.78	129	1.75
M35_39	6	2.43	2	1.79	169	2.89
M40_44	6	3.16	5	5.32	205	4.14
M45_49	12	9.23	1	1.35	183	5.01
M50_54	11	11.11	5	9.26	230	7.97
M55_59	14	13.08	5	9.80	356	12.84
M60_64	17	16.19	5	11.36	504	18.97
M65_74	52	40.63	15	21.43	1216	33.24
M75_84	49	85.96	27	84.38	1369	74.12
M85_over	18	138.46	9	180.00	753	162.99
Fem_total	197	8.11	49	4.01	4745	7.30
F0_4	5	3.25	3	3.80	103	3.06
F5_9	1	0.78	0	0.00	14	0.49
F10_14	0	0.00	0	0.00	1	0.04
F15_19	1	0.68	0	0.00	9	0.30
F20_24	0	0.00	0	0.00	18	0.32
F25_29	2	0.68	0	0.00	34	0.42

F30_34	1	0.36	2	1.67	35	0.50
F35_39	1	0.48	3	2.94	49	0.85
F40_44	5	2.79	0	0.00	74	1.50
F45_49	1	0.85	0	0.00	69	1.87
F50_54	6	6.19	1	2.04	93	3.11
F55_59	9	7.96	1	1.89	164	5.85
F60_64	10	10.10	2	3.77	261	9.48
F65_74	34	22.08	9	11.11	809	16.94
F75_84	61	61.62	13	28.89	1487	45.98
F85_over	60	133.33	15	115.38	1525	118.22
Standardized Male		9.37		7.63		8.69
Standard Error		0.91		1.17		0.16
Standardized Female		9.47		5.77		7.64
Standard Error		0.92		1.15		0.15

Table 18: Summary of Standardized Mortality Rates for South Riverdale Group: All Causes of Death

1979 - 1983

	South Riverdale		Neighbourhood 10		Near 1		Near 2		Former City	
	Number	Rate/1000	Number	Rate/1000	Number	Rate/1000	Number	Rate/1000	Number	Rate/1000
Standardized Male	673	12.72	223	8.60	302	10.45	406	10.58	13791	10.10
Standard Error		1.33		2.09		2.12		2.01		0.21
Standardized Female	515	10.14	163	6.59	224	7.09	292	8.03	11607	7.97
Standard Error		1.40		1.96		2.37		2.39		0.22

1984-1988

	South Riverdale		Neighbourhood 10		Near 1		Near 2		Former City	
	Number	Rate/1000	Number	Rate/1000	Number	Rate/1000	Number	Rate/1000	Number	Rate/1000
Standardized Male	559	10.63	212	8.03	278	9.62	398	9.89	13366	9.01
Standard Error		1.14		1.10		0.17		0.17		0.17
Standardized Female	523	9.85	147	6.68	221	7.44	289	7.54	12090	7.67
Standard Error		1.03		0.88		0.15		0.15		0.15

1989-1990

	South Riverdale		Neighbourhood 10		Near 1		Near 2		All Toronto (former City)	
	Number	Rate/1000	Number	Rate/1000	Number	Rate/1000	Number	Rate/1000	Number	Rate/1000
Standardized Male	201	9.37	80	7.63	115	9.29	131	7.89	5400	8.69
Standard Error		1.04		1.03		1.18		0.79		0.16
Standardized Female	197	9.47	49	5.77	82	7.68	96	6.49	4745	7.64
Standard Error		1.04		0.81		1.19		0.73		0.15

Table 19: Summary of Standardized Rates for South Riverdale Group: Circulatory Causes of Death

1979 - 1983

	South Riverdale		Neighbourhood 10		Near 1		Near 2		All Toronto (former City)	
	Number	Rate/1000	Number	Rate/1000	Number	Rate/1000	Number	Rate/1000	Number	Rate/1000
Standardized Male	328	4.58	90	3.51	117	4.01	166	4.34	5618	4.11
Standard Error		0.82		1.37		1.17		1.22		0.14
Standardized Female	256	5.16	59	2.59	104	3.26	120	3.46	5255	3.61
Standard Error		1.06		1.32		1.24		1.26		0.16

1984-1988

	South Riverdale		Neighbourhood 10		Near 1		Near 2		All Toronto (former City)	
		Rate/1000		Rate/1000	Number	Rate/1000	Number	Rate/1000		Rate/1000
Standardized Male	187	3.67	73	2.79	88	3.06	139	3.48	4633	3.12
Standard Error		0.55		0.57		0.59		0.53		0.08
Standardized Female	228	4.38	70	3.33	89	3.03	111	3.05	4860	3.08
Standard Error		0.65		0.63		0.64		0.55		0.09

1989-1990

	South Riverdale		Neighbourhood 10		Near 1		Near 2		All Toronto (former City)	
		Rate/1000		Rate/1000	Number	Rate/1000	Number	Rate/1000		Rate/1000
Standardized Male	49	2.39	30	2.94	29	2.31	42	2.53	1626	2.62
Standard Error		0.47		0.62		0.58		0.43		0.08
Standardized Female	75	3.60	13	1.57	22	2.01	40	2.84	1713	2.76
Standard Error		0.54		0.42		0.51		0.45		0.08

Table 20: Summary of Standardized Rates for South Riverdale Group: Respiratory Causes of Death

1979 - 1983

	South Riverdale		Neighbourhood 10		Near 1		Near 2		All Toronto (former City)	
	Number	Rate/1000	Number	Rate/1000	Number	Rate/1000	Number	Rate/1000	Number	Rate/1000
Standardized Male	48	0.96	11	0.42	26	0.89	36	0.97	1094	0.80
Standard Error		0.43		0.46		0.57		0.56		0.06
Standardized Female	36	0.72	12	0.51	14	0.43	21	0.61	707	0.49
Standard Error		0.42		0.55		0.46		0.55		0.06

1984-1988

	South Riverdale		Neighbourhood 10		Near 1		Near 2		All Toronto (former City)	
		Rate/1000		Rate/1000	Number	Rate/1000	Number	Rate/1000		Rate/1000
Standardized Male	41	0.81	15	0.59	26	0.91	35	0.88	1171	0.79
Standard Error		0.26		0.27		0.30		0.26		0.04
Standardized Female	47	0.90	12	0.57	15	0.50	22	0.59	909	0.58
Standard Error		0.30		0.28		0.26		0.24		0.04

1989-1990

	South Riverdale		Neighbourhood 10		Near 1		Near 2		All Toronto (former City)	
		Rate/1000		Rate/1000	Number	Rate/1000	Number	Rate/1000		Rate/1000
Standardized Male	20	0.98	6	0.59	10	0.78	12	0.77	478	0.77
Standard Error		0.36		0.30		0.35		0.21		0.05
Standardized Female	19	0.96	5	0.55	7	0.67	6	0.37	400	0.64
Standard Error		0.34		0.27		0.36		0.21		0.04

Table 21: Summary of Standardized Rates for South Riverdale Group: All Cancer Causes of Death

1979 - 1983

	South Riverdale		Neighbourhood 10		Near 1		Near 2		All Toronto (former City)	
	Number	Rate/1000	Number	Rate/1000	Number	Rate/1000	Number	Rate/1000	Number	Rate/1000
Standardized Male	161	3.10	56	2.15	79	2.81	105	2.74	3289	2.41
Standard Error		0.68		1.03		1.04		0.98		0.10
Standardized Female	108	2.09	40	1.60	54	1.75	69	1.85	2841	1.95
Standard Error		0.57		0.93		0.93		0.94		0.11

1984-1988

	South Riverdale		Neighbourhood 10		Near 1		Near 2		All Toronto (former City)	
		Rate/1000		Rate/1000	Number	Rate/1000	Number	Rate/1000		Rate/1000
Standardized Male	139	2.66	57	2.17	82	2.81	103	2.52	3446	2.32
Standard Error		0.49		0.52		0.57		0.45		0.07
Standardized Female	98	1.82	30	1.23	55	1.85	87	2.12	3035	1.93
Standard Error		0.43		0.39		0.52		0.45		0.07

1989-1990

	South Riverdale		Neighbourhood 10		Near 1		Near 2		All Toronto (former City)	
		Rate/1000		Rate/1000	Number	Rate/1000	Number	Rate/1000		Rate/1000
Standardized Male	57	2.71	17	1.57	34	2.77	45	2.70	1342	2.16
Standard Error		0.58		0.48		0.62		0.48		0.08
Standardized Female	42	2.00	15	1.68	25	2.19	17	1.04	1195	1.92
Standard Error		0.49		0.47		0.64		0.36		0.08

Table 22: Summary of Standardized Rates for South Riverdale Group: Lung Cancer Deaths

1979 - 1983

	South Riverdale		Neighbourhood 10		Near 1		Near 2		Former City	
	Number	Rate/1000	Number	Rate/1000	Number	Rate/1000	Number	Rate/1000	Number	Rate/1000
Standardized Male	54	1.04	14	0.54	29	1.04	35	0.89	1049	0.77
Standard Error		0.38		0.53		0.64		0.58		0.06
Standardized Female	17	0.33	8	0.33	7	0.23	9	0.24	326	0.22
Standard Error		0.21		0.44		0.35		0.33		0.03

1984-1988

	South Riverdale		Neighbourhood 10		Near 1		Near 2		Former City	
	Rate/1000	Rate/1000	Rate/1000	Rate/1000	Number	Rate/1000	Number	Rate/1000	Number	Rate/1000
Standardized Male	59	1.12	16	0.60	23	0.78	31	0.74	1076	0.72
Standard Error		0.31		0.28		0.30		0.26		0.04
Standardized Female	19	0.34	2	0.07	9	0.30	19	0.44	498	0.32
Standard Error		0.18		0.10		0.20		0.20		0.03

1989-1990

	South Riverdale		Neighbourhood 10		Near 1		Near 2		Former City	
	Rate/1000	Rate/1000	Rate/1000	Rate/1000	Number	Rate/1000	Number	Rate/1000	Number	Rate/1000
Standardized Male	14	0.66	5	0.45	8	0.64	16	0.93	388	0.62
Standard Error		0.29		0.27		0.28		0.33		0.04
Standardized Female	8	0.38	2	0.19	11	0.95	2	0.13	177	0.28
Standard Error		0.22		0.16		0.43		0.13		0.03

Table 23: Summary of Standardized Rates for South Riverdale Group: Brain Cancer Deaths

1979 - 1983

	South Riverdale		Neighbourhood 10		Near 1		Near 2		All Toronto (former City)	
	Number	Rate/1000	Number	Rate/1000	Number	Rate/1000	Number	Rate/1000	Number	Rate/1000
Standardized Male	0	0.00	4	0.14	1	0.03	3	0.08	63	0.05
Standard Error		0.00		0.20		0.08		0.17		0.01
Standardized Female	6	0.12	1	0.04	1	0.03	2	0.05	60	0.04
Standard Error		0.11		0.08		0.13		0.17		0.01

1984-1988

	South Riverdale		Neighbourhood 10		Near 1		Near 2		All Toronto (former City)	
		Rate/1000		Rate/1000	Number	Rate/1000	Number	Rate/1000		Rate/1000
Standardized Male	2	0.04	0	0.00	1	0.04	3	0.07	76	0.05
Standard Error		0.05		0.00		0.07		0.01		0.01
Standardized Female	2	0.04	1	0.04	0	0.00	3	0.07	47	0.03
Standard Error		0.06		0.06		0.00		0.01		0.01

1989-1990

	South Riverdale		Neighbourhood 10		Near 1		Near 2		All Toronto (former City)	
		Rate/1000		Rate/1000	Number	Rate/1000	Number	Rate/1000		Rate/1000
Standardized Male	1	0.05	1	0.08	0	0.00	3	0.19	38	0.06
Standard Error		0.07		0.12		0.00		0.14		0.01
Standardized Female	1	0.05	0	0.00	0	0.00	0	0.00	22	0.04
Standard Error		0.08		0.00		0.00		0.00		0.01

Table 24: Summary of Standardized Rates for South Riverdale Group: Hematologic and Lymphatic Cancer Deaths

1979 - 1983

	South Riverdale		Neighbourhood 10		Near 1		Near 2		All Toronto (former City)	
	Number	Rate/1000	Number	Rate/1000	Number	Rate/1000	Number	Rate/1000	Number	Rate/1000
Standardized Male	14	0.26	2	0.08	1	0.24	3	0.16	270	0.20
Standard Error		0.18		0.18		0.29		0.23		0.03
Standardized Female	9	0.17	3	0.11	1	0.23	2	0.02	242	0.17
Standard Error		0.13		0.19		0.35		0.11		0.02

1984-1988

	South Riverdale		Neighbourhood 10		Near 1		Near 2		All Toronto (former City)	
	Number	Rate/1000	Number	Rate/1000	Number	Rate/1000	Number	Rate/1000	Number	Rate/1000
Standardized Male	12	0.24	4	0.15	6	0.20	7	0.17	293	0.20
Standard Error		0.15		0.14		0.18		0.12		0.02
Standardized Female	6	0.10	4	0.19	4	0.13	2	0.04	251	0.16
Standard Error		0.10		0.15		0.14		0.06		0.02

1989-1990

	South Riverdale		Neighbourhood 10		Near 1		Near 2		All Toronto (former City)	
	Number	Rate/1000	Number	Rate/1000	Number	Rate/1000	Number	Rate/1000	Number	Rate/1000
Standardized Male	6	0.26	1	0.15	6	0.52	4	0.22	118	0.19
Standard Error		0.17		0.12		0.28		0.12		0.02
Standardized Female	4	0.60	0	0.00	0	0.00	3	0.18	114	0.18
Standard Error		0.24		0.00		0.00		0.15		0.02

Table 25: Regression Analysis of Mortality for The Beaches and Comparison Neighbourhoods.

The Baseline Neighbourhood for Comparison is Neighbourhood 19.

*There was no significant effect modification by calendar period ** means Rates were significantly different from comparison
NBR means model estimated by Negative Binomial Regression analysis. Otherwise Poisson regression was .

Time Period*	Cause of Death	Mortality Rate Ratio Neighbourhood 43	Mortality Rate Ratio The Beaches
1979-1983	All Causes	1.02 (0.84 - 1.23)	1.28 (1.08 - 1.51)** NBR
1984 - 1988	All Causes	1.01 (0.88 - 1.15)	1.05 (0.93 - 1.19)
1989-1990	All Causes	0.88 (0.70 - 1.11)	1.14 (0.94 - 1.38)
Combined: 1979-90	All Causes	1.00 (0.90 - 1.11)	1.16 (1.05 -1.27)** NBR
Combined Controls, 1979-1990	All Causes	_____	1.15 (1.07 - 1.25)** NBR
1979-1983	Circulatory	0.96 (0.79 - 1.16)	1.25 (1.07 - 1.47)**
1984 - 1988	Circulatory	0.80 (0.64 - 0.99)	1.02 (0.85 - 1.23)
1989-1990	Circulatory	0.77 (0.51 - 1.16)	1.24 (0.90 - 1.71)
Combined: 1979-90	Circulatory	0.87 (0.76 1.00)	1.15 (1.03 - 1.29)**

Combined Controls, 1979-1990	Circulatory	_____	1.23 (1.11 - 1.36)**
		continued
1979-1983	Respiratory	1.01 (0.57 - 1.78)	1.47 (0.93 - 2.31)
1984 - 1988	Respiratory	0.81 (0.48 - 1.39)	1.35 (0.88 - 2.07)
1989-1990	Respiratory	0.63 (0.26 - 1.53)	0.99 (0.50 - 1.96)
Combined: 1979-90	Respiratory	0.85 (0.59 - 1.21)	1.32 (0.99 - 1.75)
Combined Controls, 1979-1990	Respiratory	_____	1.41 (1.10 - 1.82)**
1979-1983	All Cancer	0.95 (0.74 - 1.23)	1.07 (0.86 - 1.33)
1984 - 1988	All Cancer	1.25 (0.99 - 1.59)	1.11 (0.88 - 1.38)
1989-1990	All Cancer	0.83 (0.56 - 1.24)	0.86 (0.61 - 1.21)
Combined: 1979-90	All Cancer	1.05 (0.90 - 1.24)	1.04 (0.90 - 1.20)
Combined Controls, 1979-1990	All Cancer	_____	1.02 (0.90 - 1.16)

Table 26: Regression Analysis of Mortality for South Riverdale and Comparison Neighbourhoods.

Near Neighbourhood 2 (N2) is the Baseline for Comparison.

*There was no significant effect modification by calendar period. ** means the Rate in this neighbourhood was significantly different from that in South Riverdale. + indicates Rate Ratio Significantly different from N2.

NBR means model estimated by Negative Binomial Regression analysis. POIS means Poisson Regression analysis was utilized.

Time Period*	Cause of Death	Mortality Rate Ratio Neighbourhood 10	Mortality Rate Ratio Near 1	Mortality Rate Ratio South Riverdale	
1979-1983	All Causes	0.82 (0.71 - 0.95) **	0.93 (0.82 - 1.07) **	1.27 (1.13 - 1.44) ⁺	NBR
1984 - 1988	All Causes	0.82 (0.69 - 0.96) **	0.98 (0.84 - 1.15) **	1.18 (1.03 - 1.36) ⁺	NBR
1989-1990	All Causes	0.91 (0.73 - 1.13) **	1.17 (0.97 - 1.42)	1.31 (1.12 - 1.55) ⁺	POIS
Combined: 1979-90	All Causes	0.84 (0.76 - 0.93) **	1.00 (0.91 - 1.10) **	1.25 (1.15 - 1.36) ⁺	NBR
Combined Controls: 1979-90	All Causes	0.84 (0.77 - 0.92)	Near1 &Near2 Reference	1.25 (1.17 - 1.34)⁺	NBR
1979-1983	Circulatory Diseases	0.79 (0.64 - 0.96) **	0.94 (0.79 - 1.12) **	1.26 (1.09 - 1.46) ⁺	NBR
1984 - 1988	Circulatory Diseases	0.90 (0.65 - 1.24)	0.94 (0.69 - 1.28)	1.16 (0.88 - 1.55)	NBR
1989-1990	Circulatory Diseases	0.85 (0.59 - 1.24)	0.83 (0.58 - 1.18)	1.13 (0.85 - 1.49)	POIS
Combined: 1979-90	Circulatory Diseases	0.85 (0.70 - 1.02) **	0.93 (0.78 - 1.11) **	1.23 (1.05 - 1.45) ⁺	NBR
1979-1983	Respiratory Diseases	0.61 (0.38 - 1.00) **	0.83 (0.56 - 1.25)	1.08 (0.77 - 1.51)	POIS

1984 - 1988	Respiratory Diseases	0.77 (0.49 - 1.21)	0.96 (0.64 - 1.43)	1.16 (0.83 - 1.62)	POIS
1989-1990	Respiratory Diseases	0.98 (0.46 - 2.06)	1.20 (0.62 - 2.34)	1.65 (0.94 - 2.88)	POIS
Combined: 1979-90	Respiratory Diseases	0.73 (0.54 - 0.99) **	0.94 (0.72 - 1.22) **	1.19 (0.96 - 1.48)	POIS
1979-1983	All Cancer Mortality	0.81 (0.64 - 1.05) **	0.98 (0.78 - 1.23)	1.13 (0.94 - 1.37)	POIS
1984 - 1988	All Cancer Mortality	0.72 (0.56 - 0.93)	1.00 (0.80 - 1.24)	0.96 (0.80 - 1.17)	POIS
1989-1990	All Cancer Mortality	0.82 (0.53 - 1.25) **	1.31 (0.92 - 1.88)	1.24 (0.90 - 1.70)	POIS
Combined: 1979-90	All Cancer Mortality	0.78 (0.66 - 0.91) **	1.03 (0.90 - 1.19)	1.07 (0.95 - 1.21)	POIS
Combined Controls: 1979-90	All Cancer Mortality	0.76 (0.66 - 0.89) **	Near1 &Near2 Reference	1.06 (0.95 - 1.18)	POIS
Combined: 1979-90	Lung Cancer Mortality	0.64 (0.45 - 0.90) **	1.07 (0.81 - 1.42)	1.17 (0.92 - 1.49)	POIS

Table 27: Summary of Cancer Incidence Standardized Rates for The Beaches Group: All Causes of Cancer

1985-1988

	BEACHES		Neighbourhood 19		Neighbourhood 43	
	Number	Rate/1000	Number	Rate/1000	Number	Rate/1000
Standardized Male	115	3.73	98	3.72	71	3.95
Standard Error		0.59		0.72		0.83
Standardized Female	145	3.98	111	3.62	105	4.41
Standard Error		0.62		0.73		0.83

1989-1993

	BEACHES		Neighbourhood 19		Neighbourhood 43	
	Number	Rate/1000	Number	Rate/1000	Number	Rate/1000
Standardized Male	174	4.39	166	5.18	125	5.61
Standard Error		0.74		0.90		1.12
Standardized Female	216	5.04	189	5.15	143	5.22
Standard Error		0.77		0.84		0.98

1994-1999

	BEACHES		Neighbourhood 19		Neighbourhood 43	
	Number	Rate/1000	Number	Rate/1000	Number	Rate/1000
Standardized Male	221	4.51	143	3.87	126	4.70
Standard Error		0.75		0.80		1.03
Standardized Female	231	4.44	202	4.97	149	4.72
Standard Error		0.73		0.87		0.95

**Table 28: Summary of Standardized Rates for The Beaches Group: Lung Cancer Incidence
1985-1988**

	BEACHES		Neighbourhood 19		Neighbourhood 43	
	Number	Rate/1000	Number	Rate/1000	Number	Rate/1000
Standardized Male	23	0.75	15	0.57	11	0.64
Standard Error		0.26		0.27		0.33
Standardized Female	23	0.64	8	0.25	9	0.41
Standard Error		0.25		0.19		0.27

1989-1993

	BEACHES		Neighbourhood 19		Neighbourhood 43	
	Number	Rate/1000	Number	Rate/1000	Number	Rate/1000
Standardized Male	30	0.74	26	0.82	14	0.63
Standard Error		0.30		0.36		0.38
Standardized Female	18	0.43	18	0.49	23	0.88
Standard Error		0.23		0.26		0.41

1994-1999

	BEACHES		Neighbourhood 19		Neighbourhood 43	
	Number	Rate/1000	Number	Rate/1000	Number	Rate/1000
Standardized Male	25	0.54	22	0.58	11	0.40
Standard Error		0.26		0.31		0.30
Standardized Female	31	0.62	19	0.49	7	0.23
Standard Error		0.28		0.27		0.21

Table 29: Summary of Standardized Rates for The Beaches Group: Brain Cancer Incidence

1985-1988

	BEACHES		Neighbourhood 19		Neighbourhood 43	
	Number	Rate/1000	Number	Rate/1000	Number	Rate/1000
Standardized Male	3	0.09	2	0.06	3	0.20
Standard Error		0.12		0.06		0.21
Standardized Female		0.03	1	0.03	2	0.08
Standard Error	1	0.05		0.06		0.11

1989-1993

	BEACHES		Neighbourhood 19		Neighbourhood 43	
	Number	Rate/1000	Number	Rate/1000	Number	Rate/1000
Standardized Male	5	0.12	5	0.15	5	0.24
Standard Error		0.12		0.15		0.24
Standardized Female	1	0.02	2	0.05	3	0.11
Standard Error		0.05		0.08		0.14

1994-1999

	BEACHES		Neighbourhood 19		Neighbourhood 43	
	Number	Rate/1000	Number	Rate/1000	Number	Rate/1000
Standardized Male	8	0.14	5	0.12	2	0.07
Standard Error		0.13		0.14		0.13
Standardized Female	3	0.05	1	0.02	2	0.03
Standard Error		0.07		0.06		0.07

Table 30: Summary of Standardized Rates for The Beaches Group: Hematologic and Lymphatic Cancer Incidence**1985-1988**

	BEACHES		Neighbourhood 19		Neighbourhood 43	
	Number	Rate/1000	Number	Rate/1000	Number	Rate/1000
Standardized Male	8	0.25	8	0.30	6	0.30
Standard Error		0.17		0.18		0.26
Standardized Female	7	0.18	10	0.36	3	0.12
Standard Error		0.13		0.25		0.18

1989-1993

	BEACHES		Neighbourhood 19		Neighbourhood 43	
	Number	Rate/1000	Number	Rate/1000	Number	Rate/1000
Standardized Male	15	0.36	17	0.53	14	0.63
Standard Error		0.21		0.30		0.00
Standardized Female	17	0.40	16	0.46	7	0.26
Standard Error		0.22		0.26		0.00

1994-1999

	BEACHES		Neighbourhood 19		Neighbourhood 43	
	Number	Rate/1000	Number	Rate/1000	Number	Rate/1000
Standardized Male	25	0.77	17	0.48	19	0.86
Standard Error		0.30		0.30		0.44
Standardized Female	18	0.63	16	0.41	15	0.81
Standard Error		0.27		0.26		0.40

Table 31: Summary of Standardized Cancer Incidence Rates for South Riverdale Group: All Cancer

1985-1988

	South Riverdale		Neighbourhood 10		Near 1		Near 2	
	Number	Rate/1000	Number	Rate/1000	Number	Rate/1000	Number	Rate/1000
Standardized Male	188	4.47	68	3.17	101	4.38	150	4.48
Standard Error		0.54		0.63		0.86		0.73
Standardized Female	140	3.22	65	3.20	79	3.32	136	4.18
Standard Error		0.51		0.70		0.75		0.72

1989-1993

	South Riverdale		Neighbourhood 10		Near 1		Near 2	
		Rate/1000		Rate/1000	Number	Rate/1000	Number	Rate/1000
Standardized Male	271	5.00	125	4.48	145	4.71	213	5.01
Standard Error		0.68		0.90		0.87		0.76
Standardized Female	267	5.07	97	4.03	117	4.09	200	4.98
Standard Error		0.69		0.93		0.85		0

1994-1999

	South Riverdale		Neighbourhood 10		Near 1		Near 2	
		Rate/1000		Rate/1000	Number	Rate/1000	Number	Rate/1000
Standardized Male	284	3.86	109	3.19	144	3.72	206	4.01
Standard Error		0.56		0.75		1.04		1.06
Standardized Female	281	4.00	91	2.85	123	3.63	205	4.19
Standard Error		0.58		0.77		1.10		1.19

Table 32: Summary of Standardized Rates for South Riverdale Group: Lung Cancer Incidence**1985-1988**

	South Riverdale		Neighbourhood 10		Near 1		Near 2	
	Number	Rate/1000	Number	Rate/1000	Number	Rate/1000	Number	Rate/1000
Standardized Male	53	1.26	15	0.69	23	0.99	43	1.27
Standard Error		0.28		0.29		0.41		0.39
Standardized Female	20	0.46	6	0.28	13	0.55	20	0.58
Standard Error		0.19		0.19		0.31		0.26

1989-1993

	South Riverdale		Neighbourhood 10		Near 1		Near 2	
		Rate/1000		Rate/1000	Number	Rate/1000	Number	Rate/1000
Standardized Male	72	1.36	22	0.80	34	1.10	62	1.44
Standard Error		0.36		0.39		0.42		0.41
Standardized Female	37	0.71	9	0.37	23	0.79	23	0.54
Standard Error		0.26		0.28		0.37		0.25

1994-1999

	South Riverdale		Neighbourhood 10		Near 1		Near 2	
		Rate/1000		Rate/1000	Number	Rate/1000	Number	Rate/1000
Standardized Male	79	1.06	18	0.51	33	0.84	56	1.09
Standard Error		0.30		0.30		0.47		0.55
Standardized Female	44	0.64	5	0.17	9	0.29	30	0.59
Standard Error		0.24		0.19		0.29		0.46

Table 33: Summary of Standardized Rates for South Riverdale Group: Brain Cancer Incidence

1985-1988

	South Riverdale		Neighbourhood 10		Near 1		Near 2	
	Number	Rate/1000	Number	Rate/1000	Number	Rate/1000	Number	Rate/1000
Standardized Male		0.00		0.00		0.00		0.09
Standard Error		0.00		0.00		0.00		0.1
Standardized Female		0.02		0.00		0.00		0.08
Standard Error		0.04		0.00		0.00		0.10

1989-1993

	South Riverdale		Neighbourhood 10		Near 1		Near 2	
	Number	Rate/1000	Number	Rate/1000	Number	Rate/1000	Number	Rate/1000
Standardized Male	2	0.03	6	0.20	3	0.11	5	0.12
Standard Error		0.05		0.18		0.14		0.12
Standardized Female	3	0.05	0	0.00	1	0.03	3	0.06
Standard Error		0.07		0.00		0.06		0.08

1994-1999

	South Riverdale		Neighbourhood 10		Near 1		Near 2	
	Number	Rate/1000	Number	Rate/1000	Number	Rate/1000	Number	Rate/1000
Standardized Male	0	0.00	3	0.08	3	0.07	2	0.04
Standard Error		0.00		0.12		0.19		0.16
Standardized Female	1	0.02	1	0.04	2	0.06	4	0.11
Standard Error		0.04		0.11		0.15		0.19

Table 34: Summary of Standardized Rates for South Riverdale Group: Hematologic and Lymphatic Cancer Incidence**1985-1988**

	South Riverdale		Neighbourhood 10		Near 1		Number	Near 2	
	Number	Rate/1000	Number	Rate/1000	Number	Rate/1000		Rate/1000	
Standardized Male	15	0.36	7	0.34	13	0.77	11	0.59	
Standard Error		0.16		0.20		0.37		0.26	
Standardized Female	9	0.21	4	0.21	5	0.33	6	0.42	
Standard Error		0.13		0.19		0.23		0.23	

1989-1993

	South Riverdale		Neighbourhood 10		Near 1		Number	Near 2	
	Number	Rate/1000	Number	Rate/1000	Number	Rate/1000		Rate/1000	
Standardized Male	33	0.57	15	0.51	12	0.41	21	0.48	
Standard Error		0.23		0.30		0.26		0.24	
Standardized Female	25	0.46	9	0.39	4	0.14	16	0.38	
Standard Error		0.21		0.30		0.15		0.22	

1994-1999

	South Riverdale		Neighbourhood 10		Near 1		Number	Near 2	
	Number	Rate/1000	Number	Rate/1000	Number	Rate/1000		Rate/1000	
Standardized Male	23	0.41	10	0.39	7	0.38	18	0.58	
Standard Error		0.18		0.27		0.38		0.46	
Standardized Female	24	0.64	7	0.64	11	0.56	14	0.53	
Standard Error		0.23		0.38		0.44		0.45	

Table 35: Regression Analysis of Cancer Incidence Rates for The Beaches and Comparison

The Baseline Neighbourhood for Comparison is Neighbourhood 19

Time Period	Cancer Diagnosis	Cancer Incidence Rate Ratio Neighbourhood 43	Cancer Incidence Rate Ratio The Beaches
1985 - 1988	All Causes	1.13 (0.85 - 1.50)	1.05 (0.80 - 1.37) NBR
1989-1993	All Causes	1.10 (0.90 - 1.35)	1.04 (0.86 - 1.24) POIS
1994 - 1999	All Causes	1.02 (0.87 - 1.20)	0.91 (0.78 - 1.05) POIS
Combined: 1985-99	All Causes	1.08 (0.95 - 1.23)	0.99 (0.88 - 1.12) NBR
Combined Controls, 1985-1999	All Causes	Reference	0.96 (0.86 - 1.06) NBR

NBR means model estimated by Negative Binomial Regression analysis. POIS means Poisson Regression analysis was utilized.

Table 36: Regression Analysis of Cancer Incidence for South Riverdale and Comparison

Near Neighbourhood Number 2 is the Baseline for Comparison.

** means the Rate in this neighbourhood was significantly different from that in South Riverdale

Time Period	Cause of Cancer	Cancer Incidence Rate Ratio Neighbourhood 10	Cancer Incidence Rate Ratio Near 1	Cancer Incidence Rate Ratio South Riverdale	
1985-1988	All Causes	0.73 (0.59 - 0.92)	0.87 (0.71 - 1.07)	0.88 (0.74 - 1.06)	NBR
1989 - 1993	All Causes	0.85 (0.72-1.01)**	0.89 (0.75 - 1.04)	1.01 (0.88 - 1.15)	NBR
1994-1999	All Causes	0.75 (0.60 - 0.93)**	0.92 (0.75 - 1.13)	0.95 (0.79 - 1.14)	NBR
Combined: 1985-99	All Causes	0.79 (0.70 - 0.89)**	0.89 (0.79 - 1.00)	0.96 (0.87 - 1.07)	NBR

NBR means model estimated by Negative Binomial Regression analysis. POIS means Poisson Regression analysis was utilized.

Table 37: Summary of Standardized Hospitalization Rates for The Beaches Group: All Hospitalizations

1985-1988

	BEACHES		Neighbourhood 19		Neighbourhood 43	
	Number	Rate/1000	Number	Rate/1000	Number	Rate/1000
Standardized Male	1150	35.07	732	28.98	553	32.47
Standard Error		1.96		2.06		2.55
Standardized Female	1015	27.76	646	20.72	621	25.62
Standard Error		1.69		1.61		2.00

1989-1993

	BEACHES		Neighbourhood 19		Neighbourhood 43	
	Number	Rate/1000	Number	Rate/1000	Number	Rate/1000
Standardized Male	1295	31.50	830	25.09	661	29.24
Standard Error		1.85		1.88		2.41
Standardized Female	1228	28.86	850	22.13	738	27.01
Standard Error		1.75		1.66		2.13

1994-1998

	BEACHES		Neighbourhood 19		Neighbourhood 43	
	Number	Rate/1000	Number	Rate/1000	Number	Rate/1000
Standardized Male	1269	29.80	720	21.57	624	27.09
Standard Error		1.78		1.77		2.30
Standardized Female	1317	31.59	763	21.44	712	27.57
Standard Error		1.84		1.71		2.17

Table 38: Summary of Standardized Rates for The Beaches Group: All Circulatory Hospitalizations**1985-1988**

	BEACHES		Neighbourhood 19		Neighbourhood 43	
	Number	Rate/1000	Number	Rate/1000	Number	Rate/1000
Standardized Male	418	13.47	291	11.44	239	13.48
Standard Error		1.10		1.23		1.47
Standardized Female	335	9.56	201	6.07	244	9.58
Standard Error		0.94		0.89		1.17

1989-1993

	BEACHES		Neighbourhood 19		Neighbourhood 43	
	Number	Rate/1000	Number	Rate/1000	Number	Rate/1000
Standardized Male	520	12.84	341	10.57	303	13.21
Standard Error		1.23		1.26		1.65
Standardized Female	427	10.36	285	7.37	266	9.59
Standard Error		1.10		0.97		1.30

1994-1998

	BEACHES		Neighbourhood 19		Neighbourhood 43	
	Number	Rate/1000	Number	Rate/1000	Number	Rate/1000
Standardized Male	544	12.95	321	9.79	244	10.69
Standard Error		1.23		1.23		1.51
Standardized Female	483	10.78	258	7.34	254	9.73
Standard Error		1.14		1.03		1.33

**Table 39: Summary of Standardized Rates for The Beaches Group: Acute Ischemic Heart Disease Hospitalizations
 1985-1988**

	BEACHES		Neighbourhood 19		Neighbourhood 43	
	Number	Rate/1000	Number	Rate/1000	Number	Rate/1000
Standardized Male	61	2.00	71	2.79	43	2.48
Standard Error		0.43		0.59		0.62
Standardized Female	50	1.45	40	1.24	45	1.73
Standard Error		0.37		0.40		0.49

1989-1993

	BEACHES		Neighbourhood 19		Neighbourhood 43	
	Number	Rate/1000	Number	Rate/1000	Number	Rate/1000
Standardized Male	100	2.38	76	2.33	57	2.48
Standard Error		0.54		0.60		0.73
Standardized Female	56	1.36	39	1.06	45	1.62
Standard Error		0.41		0.38		0.54

1994-1998

	BEACHES		Neighbourhood 19		Neighbourhood 43	
	Number	Rate/1000	Number	Rate/1000	Number	Rate/1000
Standardized Male	155	3.65	86	2.66	59	2.60
Standard Error		0.67		0.65		0.76
Standardized Female	111	2.84	59	2.25	43	1.65
Standard Error		0.60		0.57		0.56

Table 40: Summary of Standardized Rates for The Beaches Group: All Respiratory Disease Hospitalizations**1985-1988**

	BEACHES		Neighbourhood 19		Neighbourhood 43	
	Number	Rate/1000	Number	Rate/1000	Number	Rate/1000
Standardized Male	391	10.74	202	8.28	151	9.85
Standard Error		1.00		1.10		1.38
Standardized Female	362	9.28	182	6.49	135	6.37
Standard Error		1.00		1.14		1.17

1989-1993

	BEACHES		Neighbourhood 19		Neighbourhood 43	
	Number	Rate/1000	Number	Rate/1000	Number	Rate/1000
Standardized Male	355	8.10	206	5.94	152	6.98
Standard Error		0.72		0.80		0.00
Standardized Female	370	8.19	221	5.92	148	5.80
Standard Error		0.80		0.68		0.00

1994-1998

	BEACHES		Neighbourhood 19		Neighbourhood 43	
	Number	Rate/1000	Number	Rate/1000	Number	Rate/1000
Standardized Male	265	5.85	147	3.89	124	5.37
Standard Error		0.82		0.76		1.08
Standardized Female	303	7.95	157	5.03	129	6.93
Standard Error		0.97		0.89		1.19

Table 41: Summary of Standardized Rates for The Beaches Group: All Asthma Hospitalizations

1985-1988

	BEACHES		Neighbourhood 19		Neighbourhood 43	
	Number	Rate/1000	Number	Rate/1000	Number	Rate/1000
Standardized Male	68	1.65	26	0.95	23	1.66
Standard Error		0.36		0.33		0.46
Standardized Female	91	2.29	41	1.47	24	1.08
Standard Error		0.47		0.54		0.44

1989-1993

	BEACHES		Neighbourhood 19		Neighbourhood 43	
	Number	Rate/1000	Number	Rate/1000	Number	Rate/1000
Standardized Male	103	2.20	26	0.64	18	0.85
Standard Error		0.48		0.28		0.45
Standardized Female	109	2.38	31	0.85	18	0.71
Standard Error		0.51		0.35		0.38

1994-1998

	BEACHES		Neighbourhood 19		Neighbourhood 43	
	Number	Rate/1000	Number	Rate/1000	Number	Rate/1000
Standardized Male	67	1.33	13	0.28	19	0.83
Standard Error		0.37		0.18		0.43
Standardized Female	45	1.63	21	1.42	26	3.37
Standard Error		0.42		0.43		0.90

Table 42: Regression Analysis of Hospital Admissions for The Beaches and Comparison

The Baseline Neighbourhood for Comparison is Neighbourhood 19 (N19).

Robust 95% Confidence Intervals are Presented

*There was no significant effect modification by calendar period. ** means the Rate in this neighbourhood was significantly different from that in The Beaches. + means the Rate was significantly different from N19.

Time Period*	Admission Diagnosis	Hospitalization Rate Ratio Neighbourhood 43	Hospitalization Rate Ratio The Beaches	Rate Ratio
1985-1988	All Causes	1.14 (0.96 - 1.35) **	1.35 (1.15 - 1.58) ⁺	NBR
1989 - 1993	All Causes	1.20 (1.05 - 1.38)	1.30 (1.15 - 1.46) ⁺	NBR
1994-1998	All Causes	1.30 (1.15 - 1.48) **	1.48 (1.28 - 1.70) ⁺	NBR
Combined: 1985-98	All Causes	1.21 (1.10 - 1.33) **	1.37 (1.25 - 1.51) ⁺	NBR
1985-1988	Circulatory	1.57 (1.15 - 2.15)	1.63 (1.22 - 2.20) ⁺	NBR
1989 - 1993	Circulatory	1.32 (1.11 - 1.56)	1.35 (1.14 - 1.60) ⁺	NBR
1994-1998	Circulatory	1.19 (0.99 - 1.45) **	1.42 (1.20 - 1.69) ⁺	NBR
Combined: 1985-98	Circulatory	1.33 (1.16 - 1.52)	1.44 (1.27 - 1.63) ⁺	NBR

....continued

1985-1988	Respiratory	1.09 (0.89 - 1.35) **	1.44 (1.19 - 1.74) ⁺	NBR
1989 - 1993	Respiratory	1.12 (.90 - 1.41)	1.35 (1.13 - 1.62) ⁺	NBR
1994-1998	Respiratory	1.23 (0.99 - 1.53) **	1.56 (1.25 - 1.94) ⁺	NBR
Combined: 1985-98	Respiratory	1.14 (1.00 - 1.32) **	1.43 (1.26 - 1.63) ⁺	NBR
1985-1988	Asthma	1.02 (0.63 - 1.67) **	1.61 (1.10 - 2.38) ⁺	NBR
1989 - 1993	Asthma	1.20 (1.05 - 1.38)	1.30 (1.15 - 1.46) ⁺	NBR
1994-1998	Asthma	1.30 (1.15 - 1.48) **	1.48 (1.28 - 1.70) ⁺	NBR
Combined: 1985-98	Asthma	1.22 (1.07 - 1.40) **	1.43 (1.25 - 1.64) ⁺	NBR

Table 43: Summary of Standardized Hospitalization Rates for South Riverdale Group: All Causes of Hospitalization**1985-1988**

	South Riverdale		Neighbourhood 10		Near 1		Near 2	
	Number	Rate/1000	Number	Rate/1000	Number	Rate/1000	Number	Rate/1000
Standardized Male	1712	38.24	793	37.16	981	41.12	1393	42.67
Standard Error		1.75		2.37		2.41		2.08
Standardized Female		35.47		35.50		29.80		36.99
Standard Error		1.68		2.52		2.10		2.03

1989-1993

	South Riverdale		Neighbourhood 10		Near 1		Near 2	
		Rate/1000		Rate/1000	Number	Rate/1000	Number	Rate/1000
Standardized Male	2268	40.21	934	32.45	1173	37.39	1691	38.91
Standard Error		1.66		2.13		2.18		2.54
Standardized Female	2037	38.05	711	28.66	954	55.82	1567	38.13
Standard Error		1.68		2.23		2.66		2.63

1994-1998

	South Riverdale		Neighbourhood 10		Near 1		Near 2	
		Rate/1000		Rate/1000	Number	Rate/1000	Number	Rate/1000
Standardized Male	2133	33.95	915	30.22	1098	33.82	1777	39.07
Standard Error		1.54		2.12		2.67		2.71
Standardized Female	2253	38.03	709	33.80	987	34.50	1544	38.11
Standard Error		1.68		2.41		2.85		2.89

Table 44: Summary of Standardized Rates for South Riverdale Group: Circulatory Causes of Hospitalization

1985-1988

	South Riverdale		Neighbourhood 10		Near 1		Near 2	
	Number	Rate/1000	Number	Rate/1000	Number	Rate/1000	Number	Rate/1000
Standardized Male	551	13.02	277	12.77	330	14.26	488	14.59
Standard Error		0.90		1.21		1.30		1.12
Standardized Female	527	12.32	206	11.22	244	10.13	454	14.12
Standard Error		0.97		1.35		1.16		1.18

1989-1993

	South Riverdale		Neighbourhood 10		Near 1		Near 2	
	Rate/1000	Rate/1000	Rate/1000	Rate/1000	Number	Rate/1000	Number	Rate/1000
Standardized Male	701	12.82	291	10.55	425	14.19	637	15.09
Standard Error		0.96		1.27		1.43		1.78
Standardized Female	624	12.14	216	9.50	338	12.30	545	13.96
Standard Error		1.02		1.18		1.34		1.78

1994-1998

	South Riverdale		Neighbourhood 10		Near 1		Near 2	
	Rate/1000	Rate/1000	Rate/1000	Rate/1000	Number	Rate/1000	Number	Rate/1000
Standardized Male	726	11.84	373	12.56	419	13.11	775	17.39
Standard Error		0.97		1.44		1.61		1.87
Standardized Female	760	13.10	274	14.12	361	12.83	559	13.89
Standard Error		1.05		1.84		1.76		1.80

Table 45: Summary of Standardized Rates for South Riverdale Group: Acute Ischemic Heart Disease Hospitalization**1985-1988**

	South Riverdale		Neighbourhood 10		Near 1		Near 2	
	Number	Rate/1000	Number	Rate/1000	Number	Rate/1000	Number	Rate/1000
Standardized Male	84	1.98	43	1.97	42	1.82	76	2.27
Standard Error		0.36		0.48		0.46		0.45
Standardized Female	74	1.73	27	1.57	30	1.23	56	1.71
Standard Error		0.37		0.52		0.41		0.41

1989-1993

	South Riverdale		Neighbourhood 10		Near 1		Near 2	
	Number	Rate/1000	Number	Rate/1000	Number	Rate/1000	Number	Rate/1000
Standardized Male	161	2.90	57	2.02	98	3.22	144	3.38
Standard Error		0.47		0.57		0.70		0.93
Standardized Female	103	2.03	43	2.02	80	2.89	123	3.10
Standard Error		0.44		0.54		0.66		0.92

1994-1998

	South Riverdale		Neighbourhood 10		Near 1		Near 2	
	Number	Rate/1000	Number	Rate/1000	Number	Rate/1000	Number	Rate/1000
Standardized Male	202	3.34	108	3.64	129	4.02	270	5.99
Standard Error		0.53		0.79		0.90		1.15
Standardized Female	206	3.55	77	4.16	96	3.38	166	4.09
Standard Error		0.56		1.10		0.93		1.02

Table 46: Summary of Standardized Rates for South Riverdale Group: All Respiratory Disease Hospitalizations

1985-1988

	South Riverdale		Neighbourhood 10		Near 1		Near 2	
	Number	Rate/1000	Number	Rate/1000	Number	Rate/1000	Number	Rate/1000
Standardized Male	640	13.11	260	12.54	348	14.07	466	14.85
Standard Error		0.90		1.23		1.29		1.10
Standardized Female	564	11.15	252	10.47	250	8.90	400	11.16
Standard Error		0.90		1.25		1.17		1.11

1989-1993

	South Riverdale		Neighbourhood 10		Near 1		Near 2	
		Rate/1000		Rate/1000	Number	Rate/1000	Number	Rate/1000
Standardized Male	781	13.04	313	10.07	330	10.06	467	10.15
Standard Error		1.03		1.28		1.23		1.70
Standardized Female	595	10.41	204	6.93	244	7.99	457	10.20
Standard Error		0.95		1.12		1.16		1.73

1994-1998

	South Riverdale		Neighbourhood 10		Near 1		Near 2	
		Rate/1000		Rate/1000	Number	Rate/1000	Number	Rate/1000
Standardized Male	590	9.04	238	7.32	289	8.85	433	9.00
Standard Error		0.84		1.08		1.52		1.51
Standardized Female	539	8.87	140	6.25	217	7.20	380	9.06
Standard Error		0.86		1.26		1.45		1.64

Table 47: Summary of Standardized Rates for South Riverdale Group: All Asthma Hospitalizations**1984-1988**

	South Riverdale		Neighbourhood 10		Near 1		Near 2	
	Number	Rate/1000	Number	Rate/1000	Number	Rate/1000	Number	Rate/1000
Standardized Male	109	2.00	29	1.39	46	1.56	84	2.77
Standard Error		0.29		0.37		0.34		0.35
Standardized Female	117	2.18	55	2.41	56	1.88	50	1.31
Standard Error		0.37		0.60		0.51		0.36

1989-1993

	South Riverdale		Neighbourhood 10		Near 1		Near 2	
	Rate/1000	Rate/1000	Rate/1000	Rate/1000	Number	Rate/1000	Number	Rate/1000
Standardized Male	147	2.20	43	1.31	57	1.66	100	1.99
Standard Error		0.41		0.45		0.49		0.77
Standardized Female	107	1.72	45	1.41	68	2.19	133	2.82
Standard Error		0.37		0.48		0.60		0.97

1994-1998

	South Riverdale		Neighbourhood 10		Near 1		Near 2	
	Rate/1000	Rate/1000	Rate/1000	Rate/1000	Number	Rate/1000	Number	Rate/1000
Standardized Male	82	1.07	39	1.14	61	1.78	58	1.05
Standard Error		0.27		0.41		0.73		0.55
Standardized Female	80	1.32	19	0.66	55	1.97	100	2.23
Standard Error		0.35		0.36		0.82		0.89

Table 48: Regression Analysis of Hospitalization Rates for South Riverdale and Comparison

Near Neighbourhood Number 2 is the Baseline for Comparison.

*There was no significant effect modification by calendar period. ** means Significantly different from South Riverdale

Time Period*	Hospitalization Diagnosis	Hospitalization Rate Ratio Neighbourhood 10	Hospitalization Rate Ratio Near 1	Hospitalization Rate Ratio South Riverdale	
1984-1988	All Causes	0.89 (0.78 - 1.00)	0.88 (0.77 - 1.01)	0.93 (0.83 - 1.03)	NBR
1989 - 1993	All Causes	0.83 (0.74 - 0.93)	0.93 (0.84 - 1.03) **	1.04 (0.94 - 1.15)	NBR
1994-1998	All Causes	0.74 (0.64 - 0.87) **	0.88 (0.79 - 0.99)	0.93 (0.83 - 1.05)	NBR
Combined: 1984-98	All Causes	0.82 (0.75 - 0.90) **	0.90 (0.83 - 0.98) **	0.97 (0.90 - 1.05)	NBR
1984-1988	Circulatory Diseases	0.75 (0.58 - 0.96)	0.80 (0.66 - 0.98)	0.81 (0.69 - 0.96)	NBR
1989 - 1993	Circulatory Diseases	0.73 (0.59 - 0.90) **	0.98 (0.81 - 1.18)	0.91 (0.76 - 1.11)	NBR
1994-1998	Circulatory Diseases	0.74 (0.58 - 0.94)	0.81 (0.68 - 0.97)	0.86 (0.70 - 1.06)	NBR
Combined: 1984-98	Circulatory Diseases	0.74 (0.64 - 0.86) **	0.87 (0.77 - 0.98)	0.86 (0.77 - 0.97)	NBR
1984-1988	Respiratory Diseases	0.90 (0.79 - 1.03)	0.93 (0.77 - 1.13)	1.02 (0.88 - 1.18)	NBR
1989 - 1993	Respiratory Diseases	0.90 (0.75 - 1.08) **	0.91 (0.76 - 1.08) **	1.17 (1.00 - 1.38)	NBR
1994-1998	Respiratory Diseases	0.76 (0.61 - 0.95) **	0.91 (0.75 - 1.09)	0.94 (0.80 - 1.11)	NBR
Combined: 1984-98	Respiratory Diseases	0.86 (0.76 - 0.97) **	0.92 (0.81 - 1.04) **	1.04 (0.93 - 1.16)	NBR

Near Neighbourhood Number 2 is the Baseline for Comparison.

*There was no significant effect modification by calendar period. ** means Significantly different from South Riverdale

....continued

1984-1988	Asthma	1.12 (0.70 - 1.81)	1.01 (0.62 - 1.66)	1.19 (0.80 - 1.77)	NBR
1989 - 1993	Asthma	0.59 (0.41 - 0.86) **	0.88 (0.61 - 1.28)	0.89 (0.65 - 1.21)	NBR
1994-1998	Asthma	0.55 (0.34 - 0.87)	1.09 (0.78 - 1.54) **	0.75 (0.56 - 1.01)	NBR
Combined: 1984-98	Asthma	0.71 (0.55 - 0.91) **	1.00 (0.77 - 1.29)	0.93 (0.76 - 1.14)	NBR

Table 49: Summary of Neighbourhood Comparisons

Health Event	The Beaches	South Riverdale
MORTALITY		
All Causes	Significantly higher than comparison	Significantly higher than comparison
Circulatory Diseases	Significantly higher than comparison	Significantly higher than comparison
Respiratory Diseases	Significantly higher than comparison	Higher than comparison
All Cancers	No difference from comparison	No different from Near Neighbours
CANCER INCIDENCE	No difference from comparison	No different from Near Neighbours
HOSPITALIZATION		
All Causes	Significantly higher than comparison	No difference from Near Neighbour 2 Significantly higher than Near Neighbour 1
Circulatory Diseases	Significantly higher than comparison	Significantly lower than Near 2 No difference from Near 1
All Respiratory Diseases	Significantly higher than comparison	No difference from Near Neighbour 2 Significantly higher than Near Neighbour 1
Asthma	Significantly higher than comparison	No difference from Near Neighbours 1 or 2

Table 50: The Values of the Deprivation Index* for the Study Neighbourhoods by Census Year

Neighbourhood	Census Year			
	1981	1986	1991	1996
The Beaches	-1.18	-1.39	-1.40	-1.51
Neighbourhood 19	-1.89	-2.16	-2.39	-2.32
Neighbourhood 43	-1.74	-1.70	-1.42	-1.49
South Riverdale	0.93	0.79	1.01	1.06
Near 1	1.48	1.58	1.31	1.54
Near 2	0.32	0.80	0.92	1.00
Neighbourhood 10	2.08	2.07	1.98	1.72

* Higher values of the Deprivation Index indicate more deprived neighbourhoods. A large negative value indicates less deprivation.

Table 51: The Values of the Deprivation Index for the Study Neighbourhoods by Census Year and Relative Risks of All Cause Mortality and All Cause Hospitalization

The Reference Neighbourhood (Relative Risk = 1.0) for comparison is Near 2.

Neighbourhood	Census Year				Mortality Relative Risk (95% CI)	Hospitalization Relative Risk (95% CI)
	1981	1986	1991	1996		
The Beaches	-1.18	-1.39	-1.4	-1.51	0.85 (0.76 - 0.94)*	0.79 (0.72 - 0.87)*
Neighbourhood 19	-1.89	-2.16	-2.39	-2.32	0.75 (0.67 - 0.84)	0.58 (0.52 - 0.64)
Neighbourhood 43	-1.74	-1.70	-1.42	-1.49	0.76 (0.68 - 0.85)	0.69 (0.64 - 0.76)
South Riverdale	0.93	0.79	1.01	1.06	1.29 (1.17 - 1.42)+	0.97 (0.89 - 1.05)++
Near 1	1.48	1.58	1.31	1.54	1.01 (0.90 - 1.12)	0.90 (0.83 - 0.98)
Near 2	0.32	0.80	0.92	1.00	1.00 (REFERENCE)	1.00 (REFERENCE)
Neighbourhood 10	2.08	2.07	1.98	1.72	0.87 (0.78 - 0.97)	0.82 (0.74 - 0.90)

* The All Cause Relative Risk was significantly higher in the Beaches than in Neighbourhood 19, and was of borderline significance (P = 0.07) in comparison with neighbourhood 43.

+ The All Cause Relative Risk was significantly higher in South Riverdale than in any of the comparison neighbourhoods.

++ The All Cause Relative Risk was significantly higher in South Riverdale than in Neighbourhood 10 and was of borderline significance (P = 0.06) with respect to Near 1.

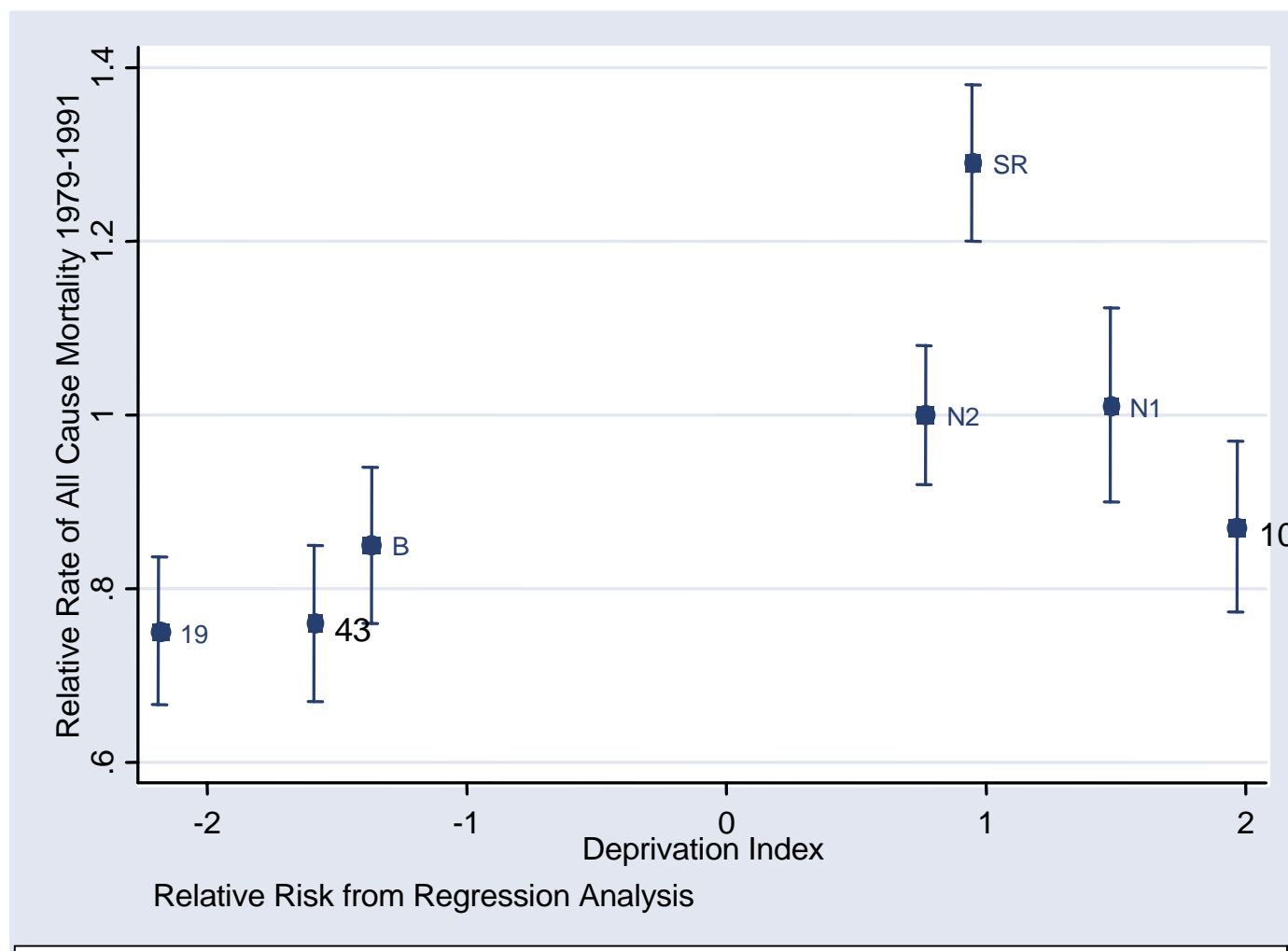


Figure 4. Relative Rates* of All Cause Mortality in relation to the Deprivation Score.

*(Rate Ratios) The Reference neighbourhood for the comparisons (Rate = 1.0) is Near Neighbour 2 (N2). The Relative Rates are derived from Regression analysis models adjusted for age, sex, and the Census period,

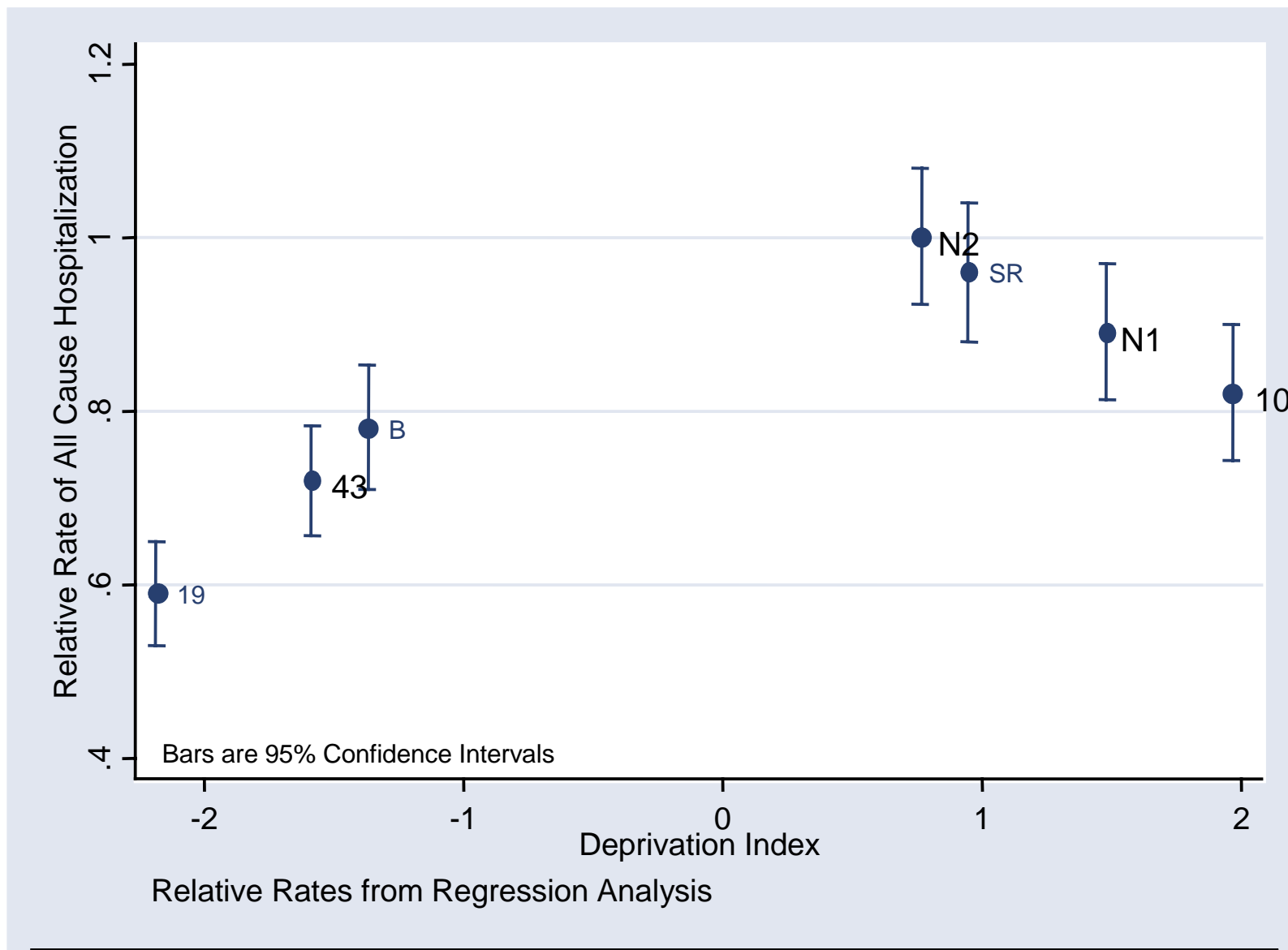


Figure 5. Relative Rates* of All Cause Hospitalization in relation to the Deprivation Score.
*(Rate Ratios) The Reference neighbourhood for the comparisons (Rate = 1.0) is Near Neighbour 2 (N2). The Relative Rates are derived from Regression analysis models adjusted for age, sex, and the Census period.

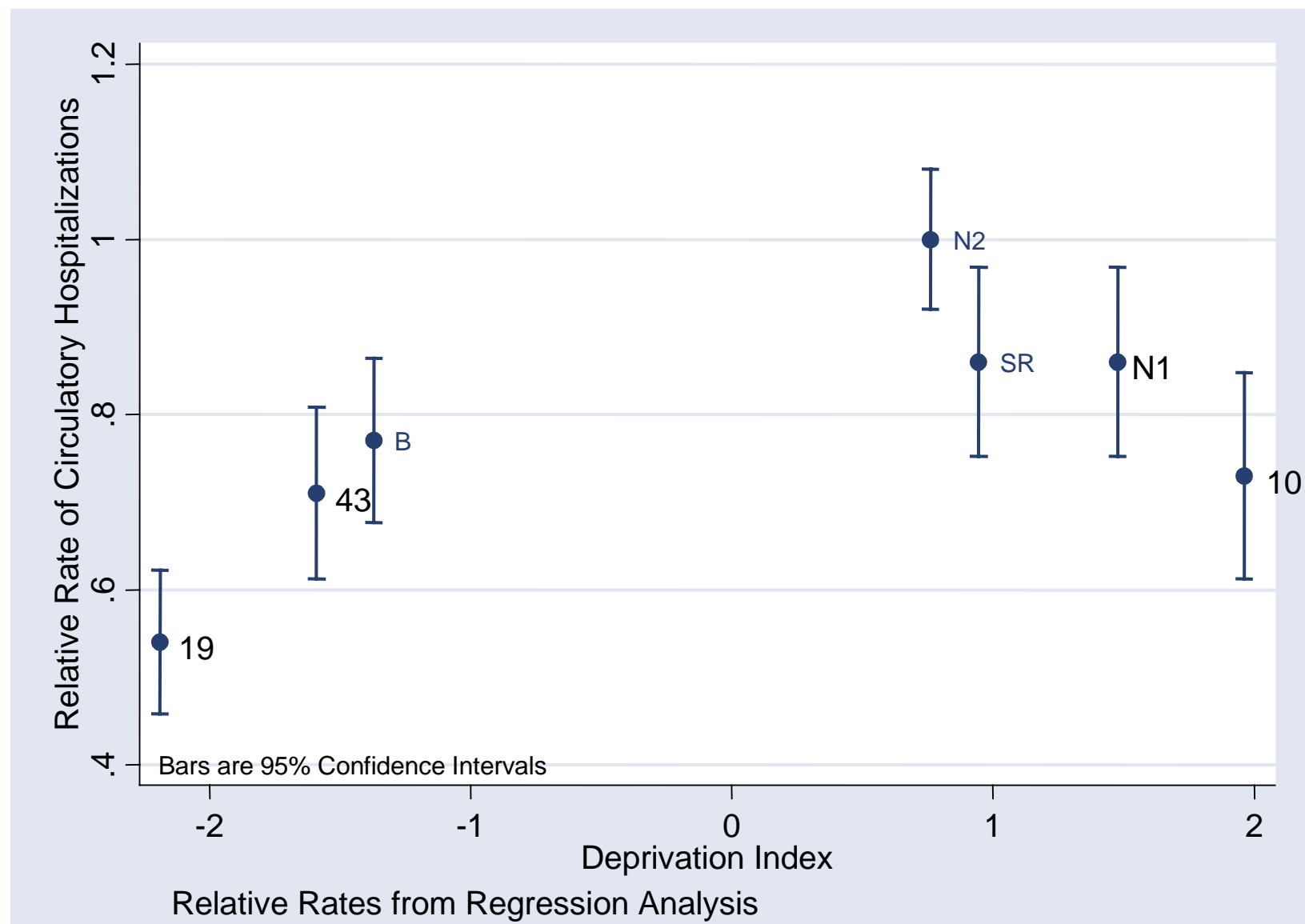


Figure 6. Relative Rates* of Circulatory Hospitalization in relation to the Deprivation Score.

*(Rate Ratios) The Reference neighbourhood for the comparisons (Rate = 1.0) is Near Neighbour 2 (N2). The Relative Rates are derived from Regression analysis models adjusted for age, sex, and the Census period.

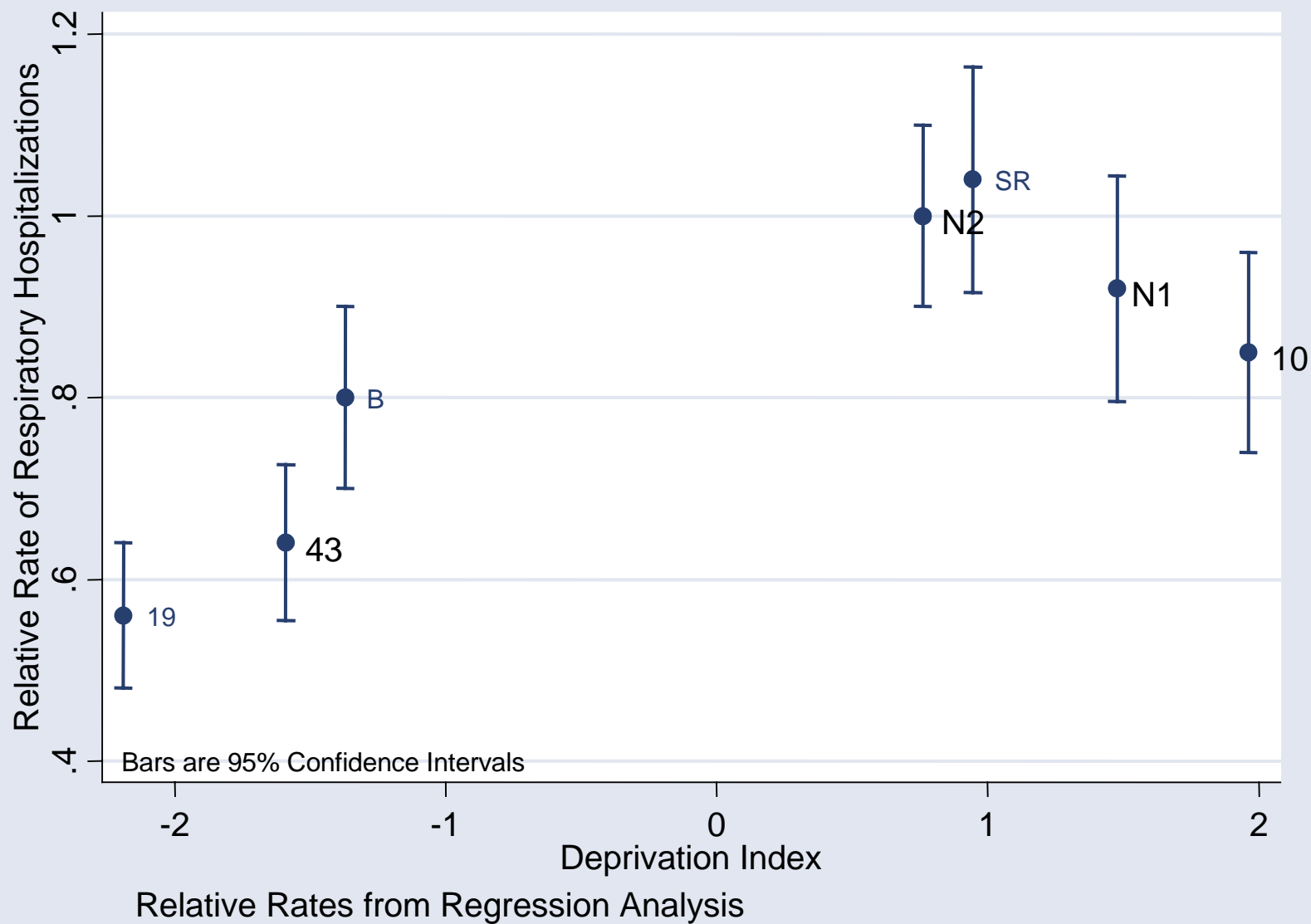


Figure 7. Relative Rates* of Respiratory Hospitalization in relation to the Deprivation Score.

*(Rate Ratios) The Reference neighbourhood for the comparisons (Rate = 1.0) is Near Neighbour 2 (N2). The Relative Rates are derived from Regression analysis models adjusted for age, sex, and the Census period.

