

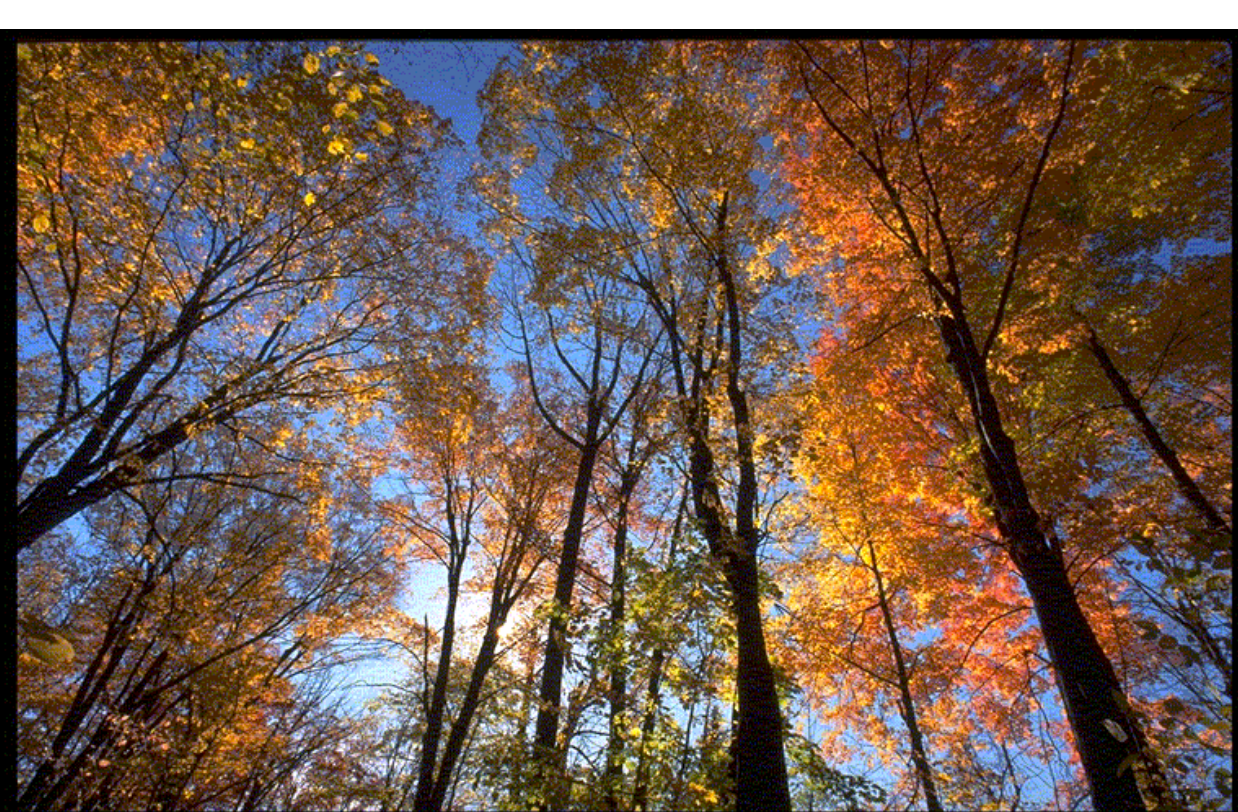


Growing for Shade

Carol Walker Gayle

Urban Forestry, Parks, Forestry and Recreation





A Green & Beautiful City



1. Manage and Maintain

We maintain approximately:

- 500,000 trees along 6,800 km of streets
- 3 million trees in 7,500 ha of parks and ravines
- Prune over 20,000 trees/year

The next major threat !





2. Protect existing trees and safeguard the future urban forest

City Street Tree Protection



Private Tree Protection



**Ravine & Natural Area
Protection**

3. Plant to renew and enhance

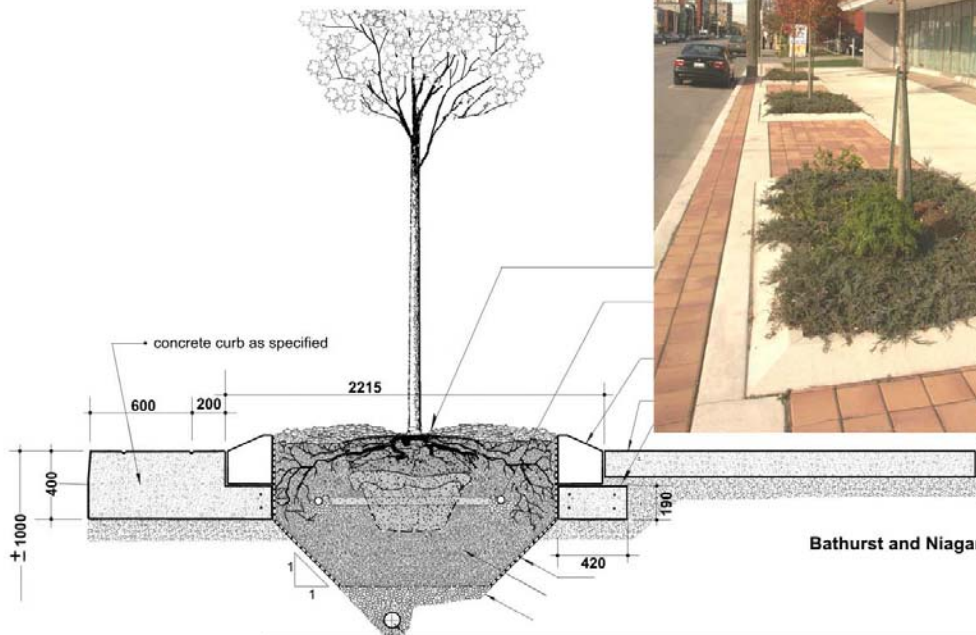
In 2007

Over 12,000 calliper trees expected

Over 39,000 small trees & shrubs

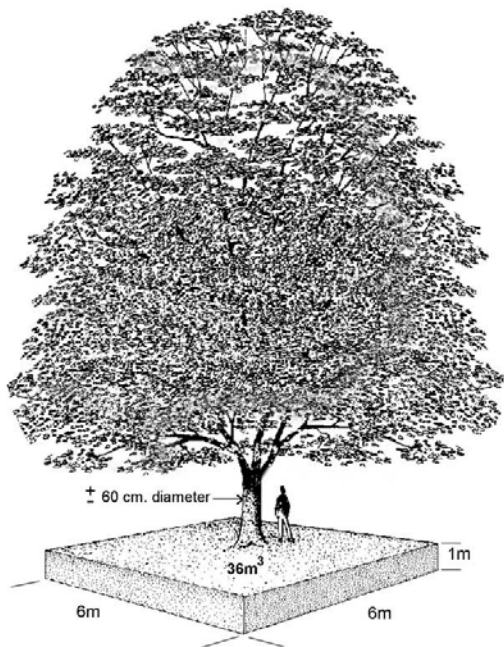




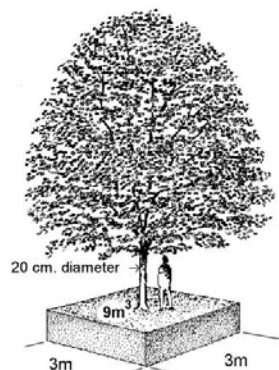


Bathurst and Niagara

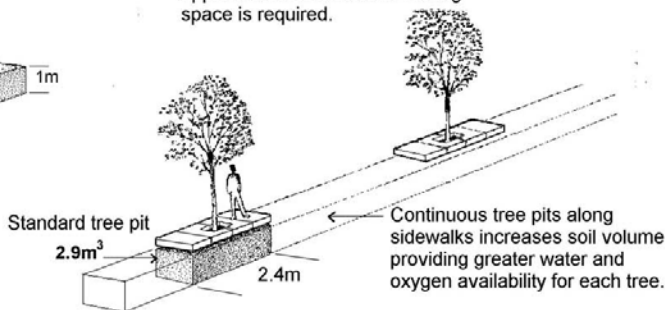
Continuous Soil Trench : Section A - A

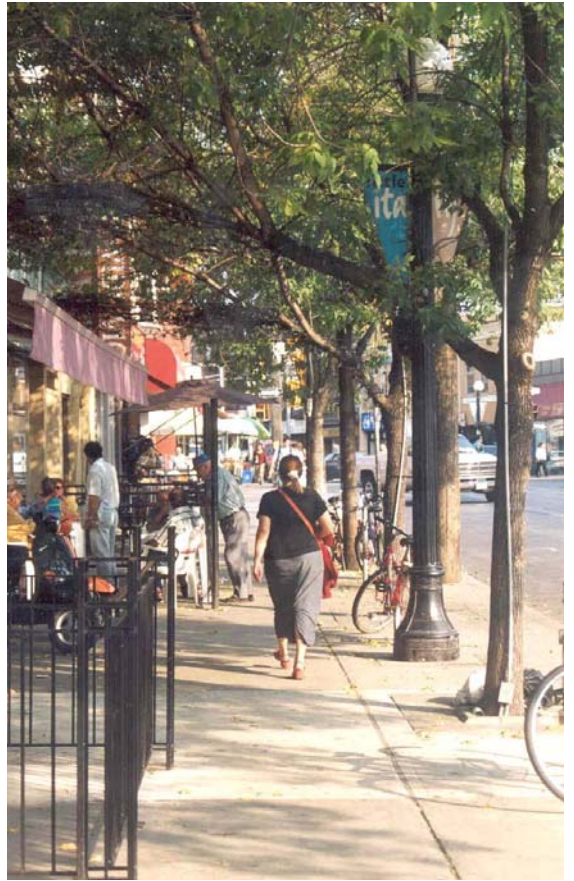


To grow a tree with a 12m canopy approx. 36 cubic meters of rooting space is required.



To grow a tree with a 6 m canopy approx. 9 cubic meters of rooting space is required.









parks and ravines 30.2%



utility corridors 3.3%



apartments 20%



institutional 10%



neighbourhoods 20%



regeneration 3.3%



areas of employment 3.7%



mixed use 4%

land use category

area
(sqa. km)

area as % of city

canopy coverage
(as % of land use area)

canopy coverage
(% of City covered by canopy)

parks & open space
neighbourhoods
apartments
areas of employment
utility corridors
regeneration
institution
mixed use

145.36
284.4
25.28
107.44
18.96
5.44
9.48
37.92

23
45
4
17
3
0.86
1.5
6

30.20
19.26
20.08
3.71
3.30
3.26
10.08
4.16

6.95
8.67
0.80
0.63
0.10
0.03
0.15
0.25

total area of city

634.3 square km

city tree canopy 17.57

4. Plan for the future urban forest



Imagine this!