

Welcome

Watermain Construction on Avenue Road and Vicinity between MacPherson Avenue and Caribou Road

Public Open House

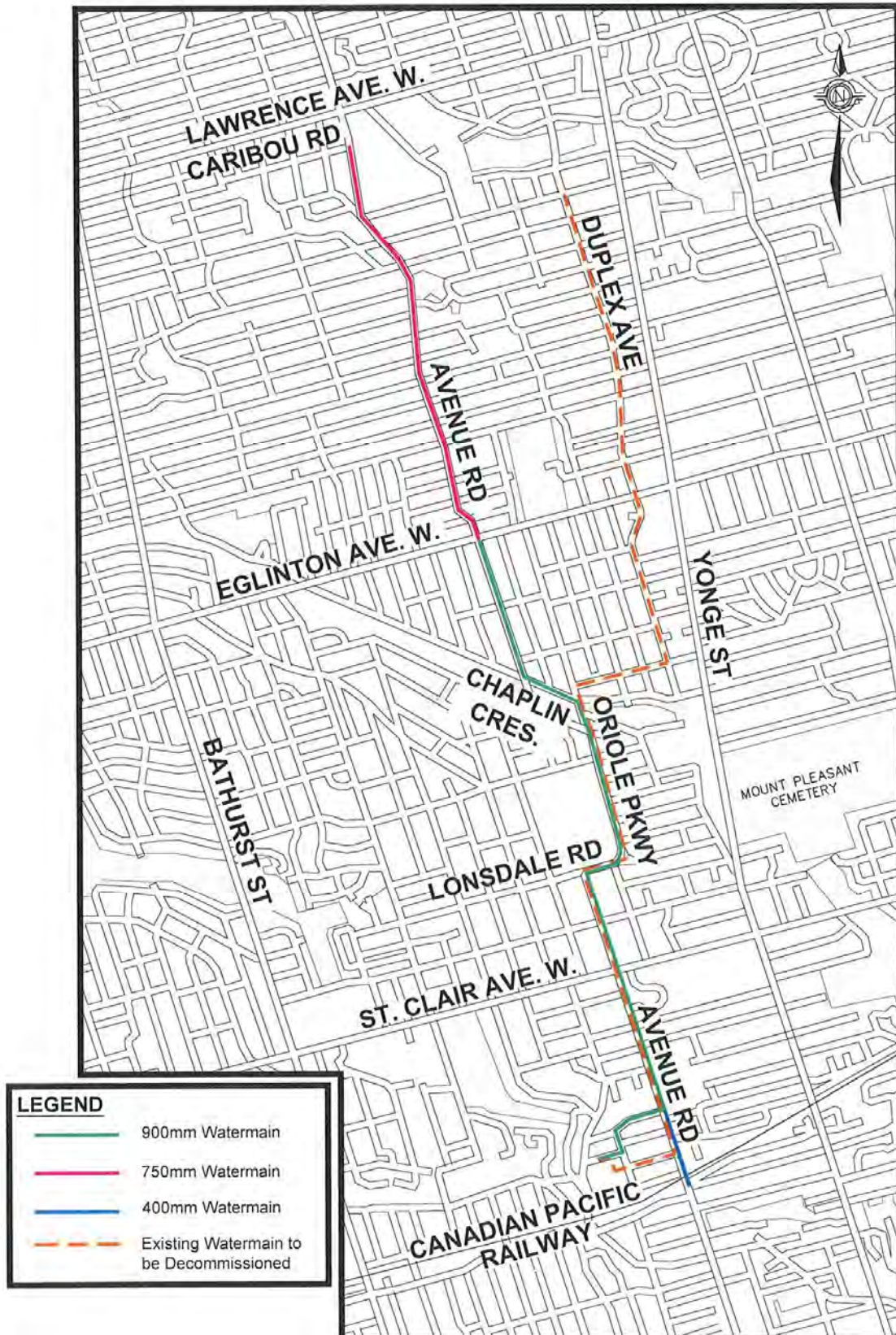


Thursday, May 6, 2010
7:00 pm to 9:00 pm
City of Toronto Archives (Atrium)
255 Spadina Road

Open House Topics

- ❖ Location Map
- ❖ Purpose of Project
- ❖ Background/Existing Conditions
- ❖ Watermain Construction
- ❖ Construction Methods
- ❖ Traffic Management
- ❖ Construction Schedule
- ❖ Potential Impacts During Construction
- ❖ Construction Notices

Location Map



Purpose of Project

Today's Open House provides members of the community with an opportunity to learn about this watermain construction project, including:

- Details about the construction process.
- How temporary disruptions will be addressed.

The project team invites residents to ask questions and discuss the project and related issues.

The purpose of the project is to replace the existing transmission watermain in order to increase the security of supply; and improve system performance.

A smaller distribution watermain on Avenue Road between Poplar Plains Crescent and MacPherson Avenue is also being replaced in order to alleviate a persistent low pressure problem.

Construction will start mid May 2010 and is expected to be completed in late 2012.

Background/ Existing Conditions

What is a Transmission Watermain?

- A watermain that primarily distributes water to reservoirs and local distribution watermains across the City.

Avenue Road Transmission Watermain Background

- Was constructed in 1915 and 1923 and carries up to 50 million litres per day.
- A Class Environmental Assessment for the construction of a new watermain was completed for this project in 2007.

What is a Distribution Watermain?

- Also known as local watermains, which supply water to residents.
- Are fed from the reservoirs and transmission watermains.

Decommissioning of Existing Watermains and Valve Chambers

- Includes removal and disposal of existing valves and abandonment of existing watermains and valve chambers.



Existing Valve Chamber

Watermain Construction

Installation of the new watermain will require multiple stages of construction, including:

- Localized excavation along the existing roadway, with some disturbance to boulevards, sidewalks and driveways.
- Installation of the watermain by open cut and tunnelling methods.
- Backfilling of excavated areas.
- Asphalt paving of the road.
- Restoration of driveways, boulevards and sidewalks.

All work will be completed primarily within the City's right of way and property.

Construction vehicles, machinery and materials will require access and storage space on the surrounding streets beyond the project limits.



*Example of Construction
Equipment*

Construction Methods

The watermain will be constructed using two different construction methods: Open Cut and Tunnelling

Open Cut

Open cut construction method involves:

- Excavating a trench.
- Shoring and supporting trench side walls.
- Installing pipe or appurtenance (eg. valve chamber).
- Concrete encasing the pipe.
- Backfilling the excavation.



Open Cut Construction

Tunnelling (Hand Mining)

Tunnelling construction method involves:

- Excavating launch and retrieval shafts.
- Excavating tunnel.
- Bracing or lining tunnel.
- Installing pipe.
- Concrete encasing the pipe.
- Backfilling the excavated shafts.



Typical Tunnel Shaft

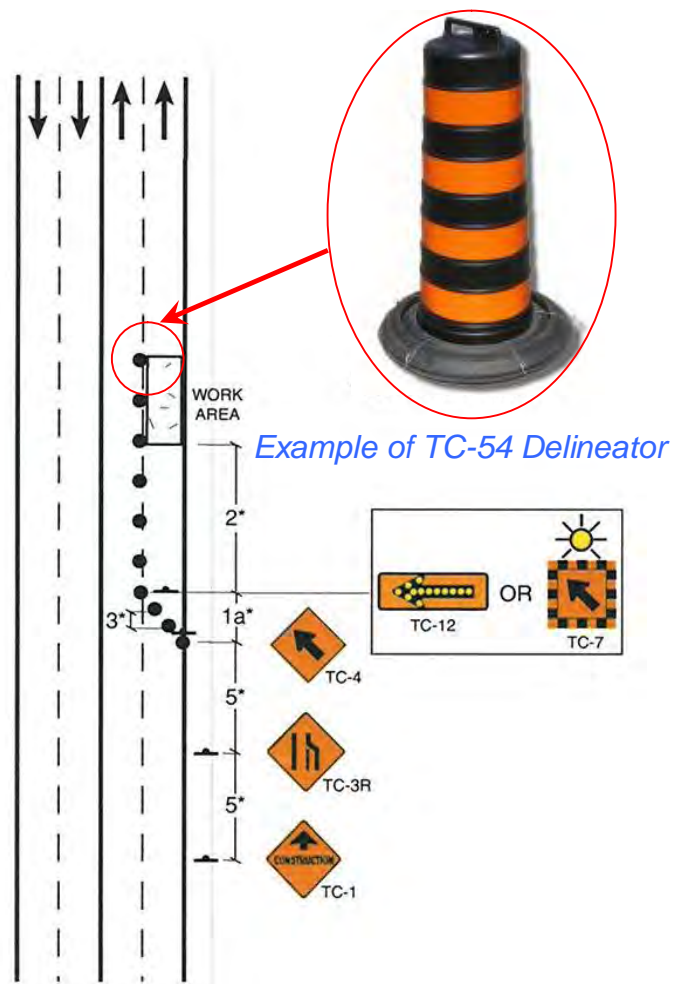
Traffic Management

Construction work will take place in stages in order to minimize traffic disruptions.

Traffic will be maintained on all major streets. However, there will be lane closures and/or lane reductions.

Lane closures and reductions will be shown with appropriate signage and traffic control devices.

Cottingham St., Rathnelly Ave., and Poplar Plains Cres. will be temporarily restricted in stages to through traffic, but will be kept open for local traffic and emergency vehicles.



Example of TC-54 Delineator

Typical Traffic Management Plan

Construction Schedule

*** See separate File for Construction Schedule Panel*

Potential Impacts During Construction

Removal and Replacement of Trees

Five trees have been identified to be removed due to anticipated conflict with construction activity (machinery, equipment, etc.) A total of 12 replacement trees will be planted.



Institutions

Construction near schools and institutions will be scheduled at specific times to minimize impacts to driveway access, loading zones, crosswalks, etc.

TTC

TTC transit service will be maintained, with temporary relocations of bus stops to suit construction work zones.

Oriole Park

A small portion of Oriole Park at Oriole Parkway and Chaplin Crescent will be temporarily closed.

Potential Impacts During Construction

(cont'd)

Sidewalks

There may be temporary sidewalk closures. However, each street will have a sidewalk open on at least one side at all times.

Driveways

Access to your driveway may be blocked for short periods of time and reinstated at the end of each working day. Access interruptions to your driveway will be coordinated with you throughout construction.

Water Supply

Your water supply may be temporarily interrupted from time to time during construction. In such cases, notices of planned interruptions will be delivered 48 hours prior.

Garbage and Recycling

Normal garbage and recycling schedules will be maintained.



Landscaping

The City suggests that any front yard landscaping wait until after the rehabilitation/reconstruction work is completed.

Construction Notices

Construction notices will be issued in stages, with the following details:

- Start date for construction.
- Areas effected by construction activities.
- Name of the contractor carrying out the work.
- Contact person for questions or concerns.

Construction notices for Cottingham St. and Rathnelly Ave. will also provide details regarding alternate parking arrangements for existing parking permit holders whose parking spots will be temporarily displaced.

Contact Us

Please take the opportunity to ask questions of the Project Team today.



You may also contact the City of Toronto's Project Manager directly:

Jeff Flewelling, P.Eng.
Senior Engineer, Technical Services Division

Metro Hall, 20th Floor
55 John Street, Toronto ON
Tel: 416-392-6628
Fax: 416-392-5418
E-mail: jflewel@toronto.ca

Visit the Project Web page at:

www.toronto.ca/involved/projects/avenue_watermain/