

## **UPDATE**

### **Traffic Restriction & Parking Arrangements**

#### **Watermain Construction on Cottingham Street from Poplar Plains Road to Rathnelly Avenue**

Expected Construction Start Date: June 20, 2011

Expected Construction Completion Date: October 31, 2011

#### **Construction Details**

The Construction Notice sent to you on June 13, 2011, explained the initial steps that would be taken for this watermain construction on Cottingham Street. The excavation of the tunnel from Shaft No. 1 towards Rathnelly Avenue is almost complete. The next steps include:

- Excavate a tunnel from Shaft No. 3 towards proposed Shaft No. 2.
- Excavate Shaft No. 2 commencing on August 22, 2011.
- Deliver the steel watermain pipes to the site and lower them into the tunnels.
- Weld the pipes together inside the shafts and tunnels.
- Deliver concrete to the site and pump it into the tunnels to encase the steel pipes.
- Backfill Shafts Nos. 1, 2, and 3 and restore the asphalt pavement.
- Apply cement mortar lining to the inside of the watermain pipes.

#### **Road Closure for Through Traffic**

Cottingham Street at Poplar Plains Road will continue to be closed to eastbound THROUGH traffic (see map on reverse). Eastbound LOCAL traffic will be allowed access, but must yield to westbound traffic. The sidewalk on the south side of Cottingham Street around Shafts Nos. 1 and 2, will also be closed permanently until construction is completed. Emergency response agencies and the City's office responsible for garbage and recycling collection will be advised of the road restriction.

#### **Parking**

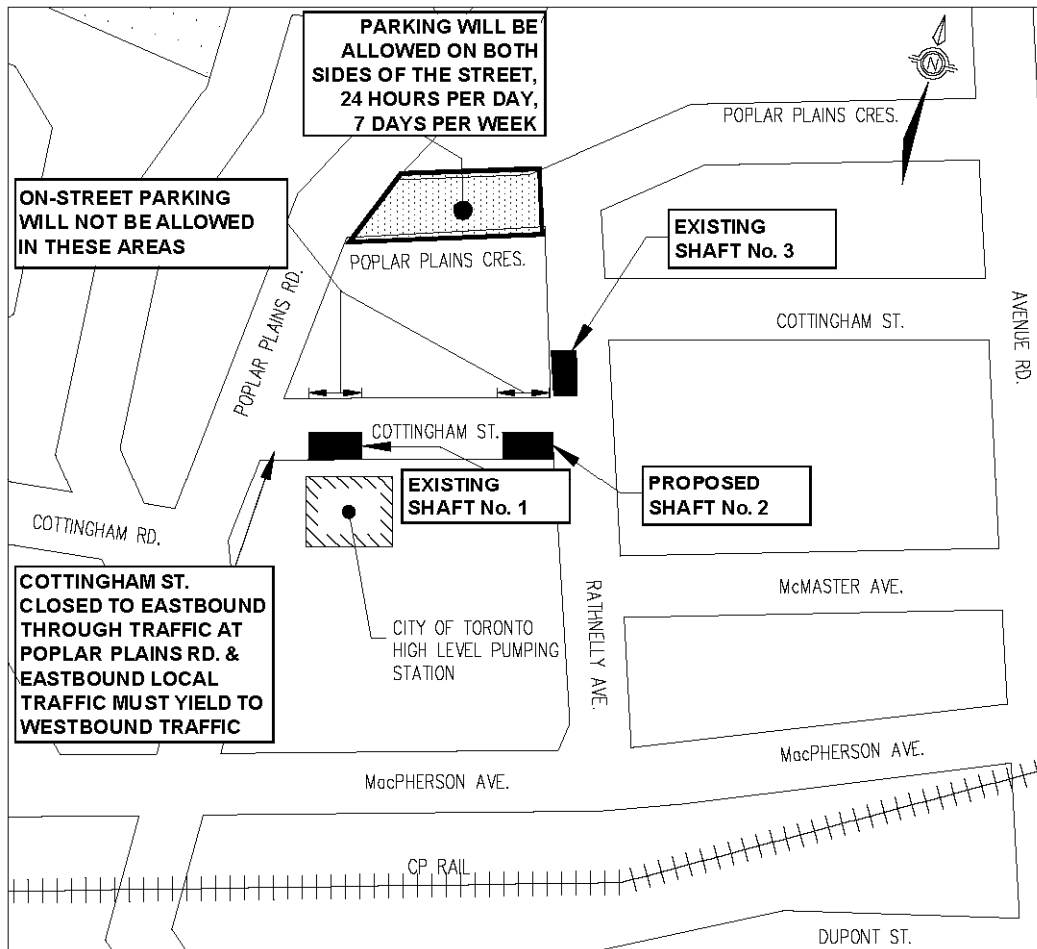
Commencing on August 22, 2011, there will be a loss of approximately five parking spaces along the north side of Cottingham Street in the vicinity of Shaft No. 2 in addition to the five parking spaces along the north side of Cottingham Street in the vicinity of Shaft No.1. Replacement parking spaces are available on both sides of Poplar Plains Crescent between Rathnelly Avenue and Poplar Plains Road where the City has covered existing parking signs in order to accommodate the loss of parking spaces. This allows you and/or your visitors to park along this portion of Poplar Plains Crescent at any time, day or night, and for any length of time. This parking situation will be monitored and, if required, measures will be taken to create additional temporary parking spaces. If it is necessary for us to make any new parking arrangements, then we will issue another Notice to advise you.

Please note that there will be no consideration for parking offences such as "No Parking within 9 metres of Intersection, Stopping on Sidewalks, and Parking by Fire Hydrants". These types of parking bylaws will continue to be enforced.

## Work Hours

Work will generally be carried out between 7:00 a.m. to 7:00 p.m., Monday to Friday, but occasionally it will be necessary to carry out work in the evenings and on weekends. The City of Toronto Noise By-law (111-2003) will be complied with throughout the duration of this work.

## Area Map



### Need more information?

For more information about Watermain Construction on Avenue Road, visit our website at:  
[www.toronto.ca/involved/projects/avenue\\_watermain](http://www.toronto.ca/involved/projects/avenue_watermain)

We welcome your questions, comments and suggestions.

Jeff Flewelling  
 Project Manager

416-392-6628  
[jflewel@toronto.ca](mailto:jflewel@toronto.ca)

Date issued: August 15, 2011.  
 Contract Number: 09FS-70WS