

Related Projects Union Station Revitalization



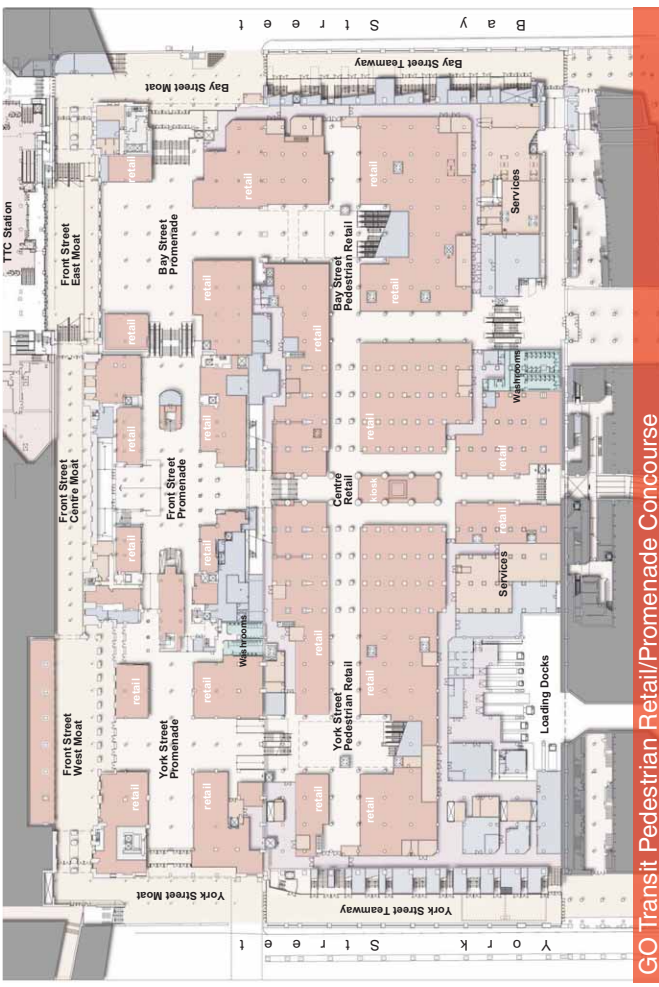
Front Street Moat



Front Street Moat



GO Train Platforms

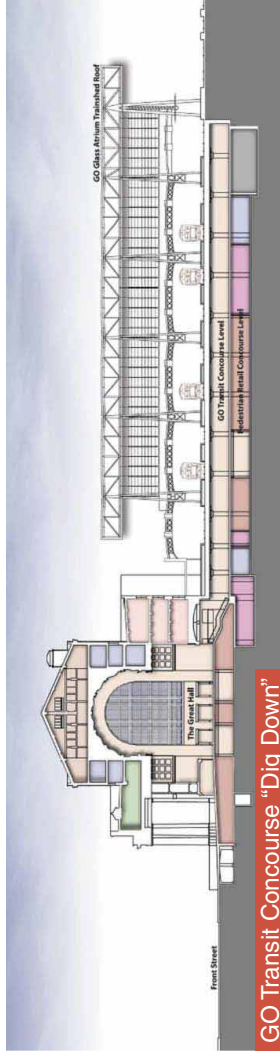


GO Transit Pedestrian Retail/Promenade Concourse

Union Station Revitalization work is underway and is targeted to be completed in 2015.

The project will bring the entire building into a state of good repair and provide new routes and direct connections to transit facilities.

Work includes a “dig down” for two new GO Transit Concourses featuring a pedestrian retail and promenade level.



GO Transit Concourse “Dig Down”



Pedestrian Retail

Related Projects

TTC Union Station and Northwest PATH Extension



TTC Union Station

Construction of a second platform and improvements to the concourse level at TTC Union Station are to commence Summer 2010 and expected to be completed by 2013.

The second platform expansion will accommodate future passenger flows, which are expected to increase 80% to 90% by 2021.

Pedestrian access and movement through the TTC Station and PATH will be improved.

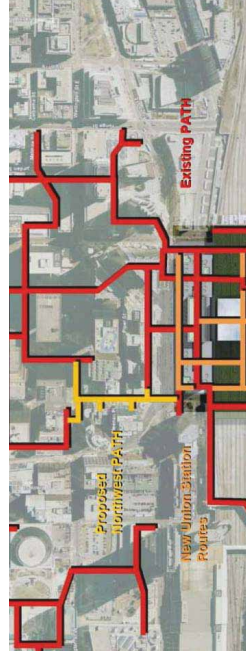


Northwest PATH Extension

A new underground Northwest (NW) PATH pedestrian connection is planned from Union Station to connect the existing underground PATH network in the Wellington Street area.

The NW PATH extension will include changes at street level along York Street; wider sidewalks, new surface entrances to the pedestrian tunnel, improved drop-off/pick-up areas and a variety of streetscape amenities are planned.

The first phase of the NW Path extension will commence in 2012 and the second phase is expected to be completed by early 2015.



Related Projects Other Adjacent Projects

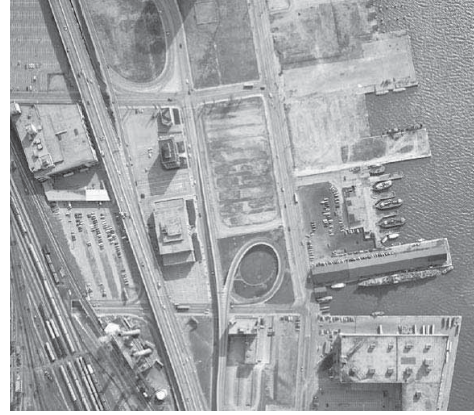
Bicycle Lanes on Bay Street



Dedicated bicycle lanes are planned on Bay Street, south of Front Street on both sides. They will be installed within the existing roadway width.

York-Bay-Yonge Interchange Reconfiguration EA Study

www.toronto.ca/involved/projects/yby_interchange/



A study is underway to investigate the feasibility of reconfiguring the Gardiner Expressway's York-Bay-Yonge Interchange to improve access as well as the pedestrian environment. Ramps being studied include the off-ramp from the Eastbound Expressway to York, Bay and Yonge Streets, and the on-ramp from Bay Street to the Eastbound Expressway.

John Street Corridor Improvements



www.toronto.ca/involved/projects/john
John Street, between Front Street West and Stephanie Street has been identified as a Cultural Corridor by the City, opportunities are being investigated to enhance the cultural significance and improve pedestrian facilities along this street.