

# FORT YORK PEDESTRIAN AND CYCLE BRIDGE CLASS ENVIRONMENTAL ASSESSMENT STUDY

Public Information Centre Presentation  
Wednesday September 16, 2009



**Stantec**

**MontgomerySisam**

# FORT YORK PEDESTRIAN AND CYCLE BRIDGE

## HISTORY OF “NEED AND JUSTIFICATION”

- Neighbourhoods and Parks are Currently Divided by Existing Rail Corridors
- Capacity and Safety Deficiencies on Strachan and Bathurst
- One of 4 Legacy Projects to Commemorate the Bicentennial Anniversary of the War of 1812
- Array of Planning Documents Support Philosophy of Off-Street Pedestrian and Cycle Connections:
  - » Fort York: Setting it Right: June 2000
  - » Fort York and Garrison Common Parks and Open Space Design and Implementation Plan: May 2001
  - » City of Toronto Bike Plan: June 2001
  - » Fort York Neighbourhood Public Realm Plan: February 2004

# FORT YORK PEDESTRIAN AND CYCLE BRIDGE

## WHAT WOULD A NEW FORT YORK BRIDGE DO?

- Provide a Link Between Existing Parks, Including:  
Trinity Bellwood Park, Stanley Park, June Callwood Park, Coronation Park,  
The Martin Goodman Trail, and Garrison Common (Fort York);
- Stimulate Positive Redevelopment of the Area;
- Increase Public Exposure to Historic Fort York;
- Integrate with the Proposed Fort York “Visitor Information Centre”
- Provide a Highly Visual Landmark in the Area
- Offer a Safe and Attractive Alternative to On-Street Travel

# FORT YORK PEDESTRIAN AND CYCLE BRIDGE

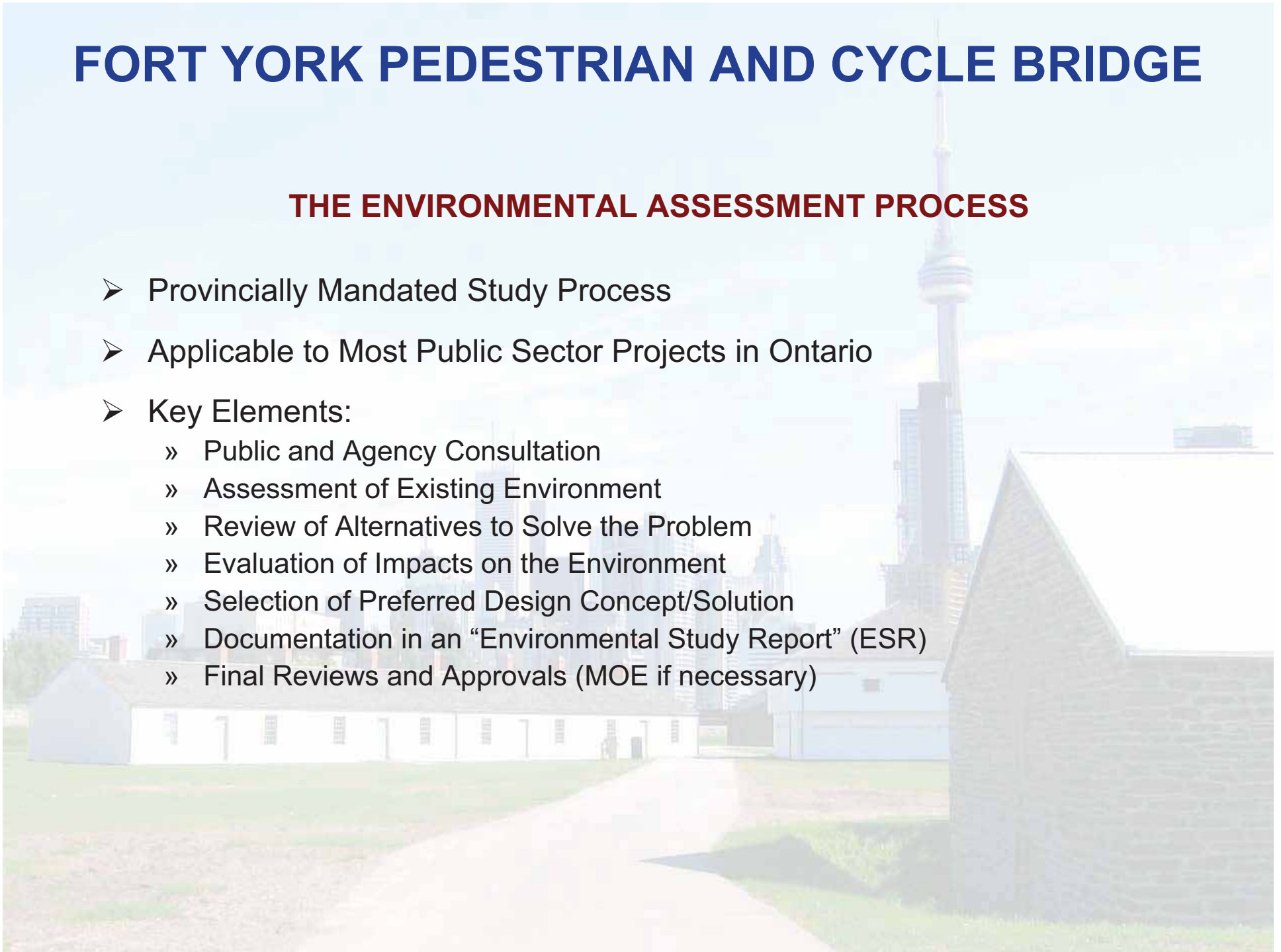
## THE PROGRAM TO BUILD A BRIDGE

1. **Class Environmental Assessment:**
  - » This is where we are today ...
2. **Detailed Design and Contract Drawings:**
  - » Architectural and Engineering Expertise
  - » Refinement of Environmental Assessment Concept
  - » Budget Control and Quantity/Cost Updates
  - » Final Approval to Construct
3. **Construction and Public Opening:**
  - » Tender Call and Contract Award
  - » Construction
  - » Grand Opening

# FORT YORK PEDESTRIAN AND CYCLE BRIDGE

## THE ENVIRONMENTAL ASSESSMENT PROCESS

- Provincially Mandated Study Process
- Applicable to Most Public Sector Projects in Ontario
- Key Elements:
  - » Public and Agency Consultation
  - » Assessment of Existing Environment
  - » Review of Alternatives to Solve the Problem
  - » Evaluation of Impacts on the Environment
  - » Selection of Preferred Design Concept/Solution
  - » Documentation in an “Environmental Study Report” (ESR)
  - » Final Reviews and Approvals (MOE if necessary)



# FORT YORK PEDESTRIAN AND CYCLE BRIDGE

## THE TEAM

### Class Environmental Assessment:

- **Stantec Consulting Ltd.:**  
Project Management plus Specialist Services in “Transportation, Structural, Landscape Architecture, Hydrogeological, Natural Environment, Civil Engineering, Site Contamination and Simulation Modeling
- **Montgomery Sisam Architects:**  
Lead Architect and Urban Form Integration
- **Peto MacCallum Limited:**  
Geotechnical Investigations
- **Archaeological Services Inc. (ASI):**  
Archaeological and Built Heritage Investigations

# FORT YORK PEDESTRIAN AND CYCLE BRIDGE

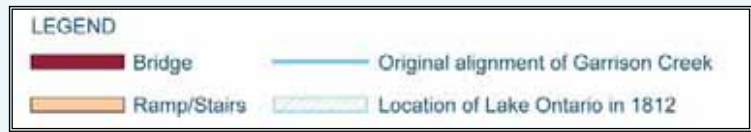
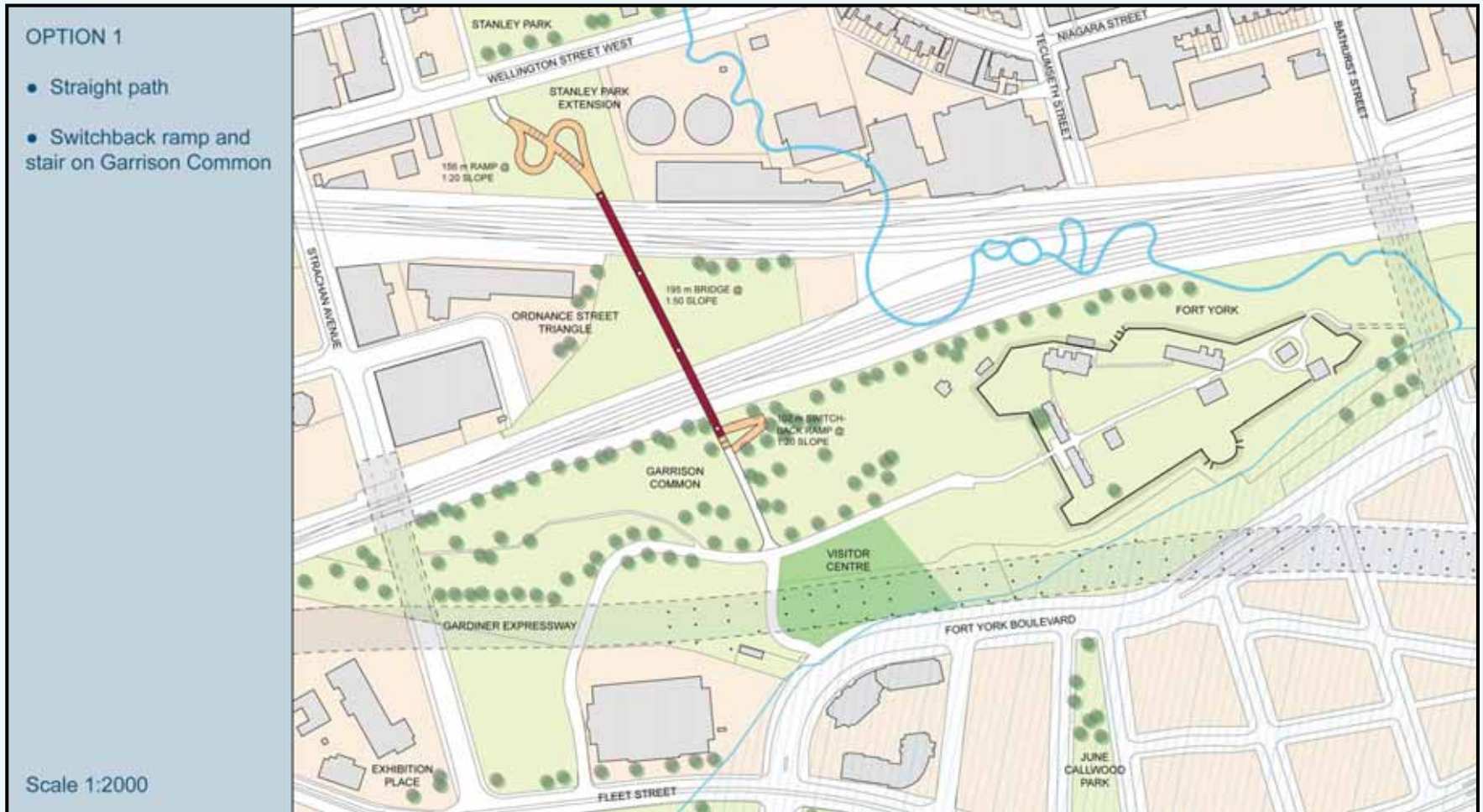
## EVOLUTION OF THE FORT YORK BRIDGE

### CONCEPT DEVELOPMENT

- Alternative Bridge Alignment Concepts
- Alternative Structure Type Concepts

*Note: Presented at Public Information Centre #1 - April 16, 2009*

# BRIDGE ALIGNMENT OPTION 1

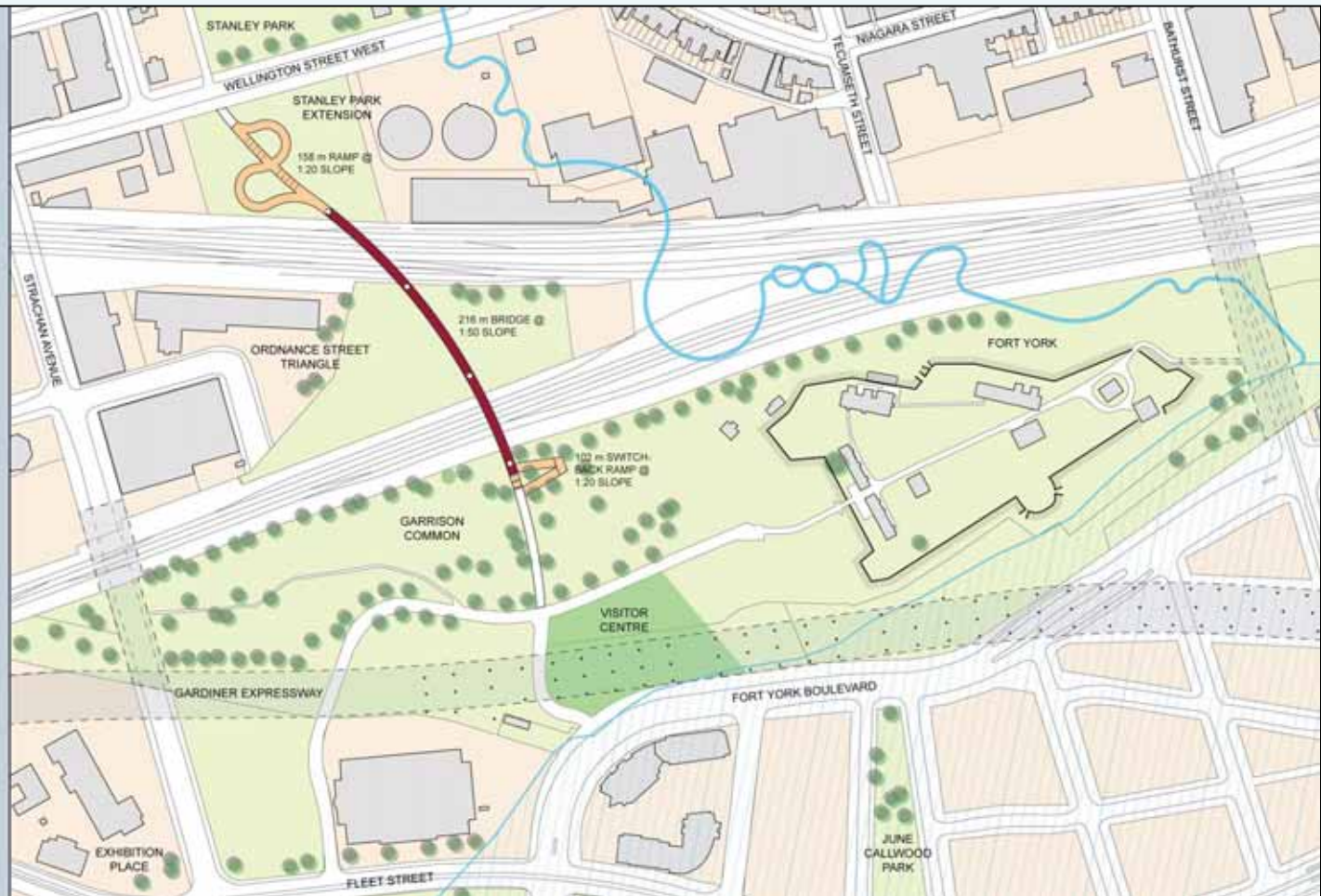


## BRIDGE ALIGNMENT OPTION 2

### OPTION 2

- Bridge curves away from downtown
- Switchback ramp and stair on Garrison Common

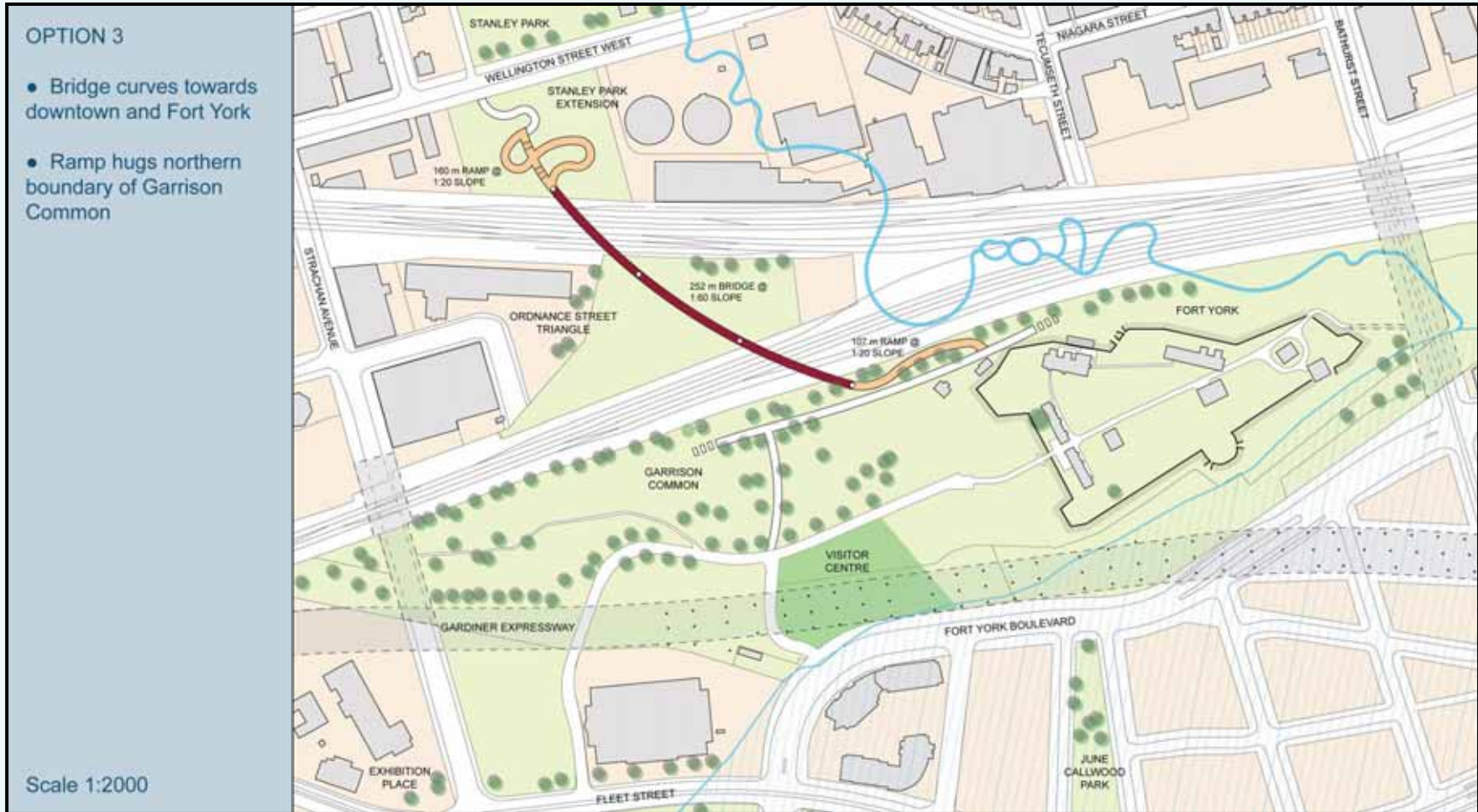
Scale 1:2000



### LEGEND

- |   |  |
|---|--|
|  Bridge      |  Original alignment of Garrison Creek |
|  Ramp/Stairs |  Location of Lake Ontario in 1812     |

## BRIDGE ALIGNMENT OPTION 3



### LEGEND

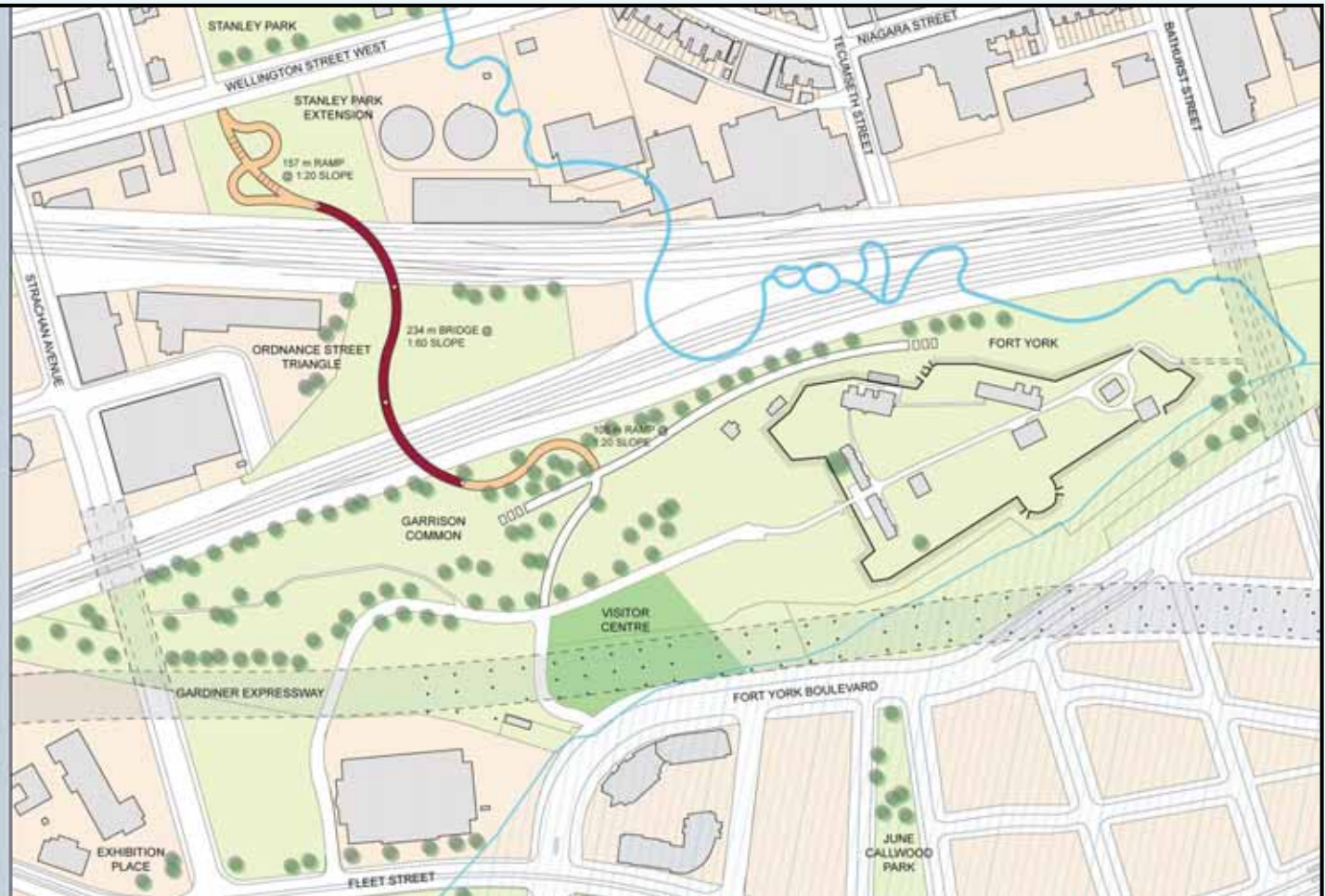
Bridge	Original alignment of Garrison Creek
Ramp/Stairs	Location of Lake Ontario in 1812

## BRIDGE ALIGNMENT OPTION 4

### OPTION 4

- Bridge has 'S' shape, which recalls the original alignment of Garrison Creek
- Ramp hugs northern boundary of Garrison Common

Scale 1:2000

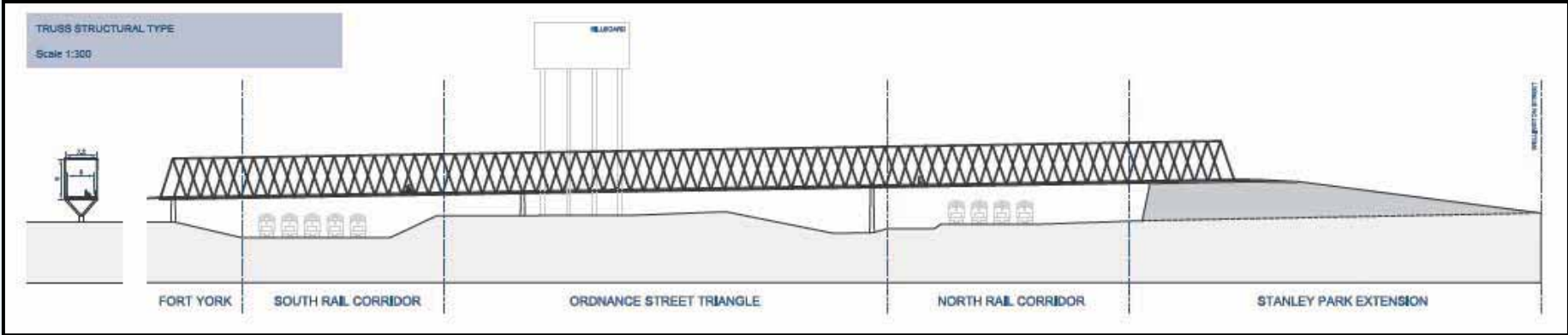


### LEGEND

- |   |  |
|---|--|
|  Bridge      |  Original alignment of Garrison Creek |
|  Ramp/Stairs |  Location of Lake Ontario in 1812     |

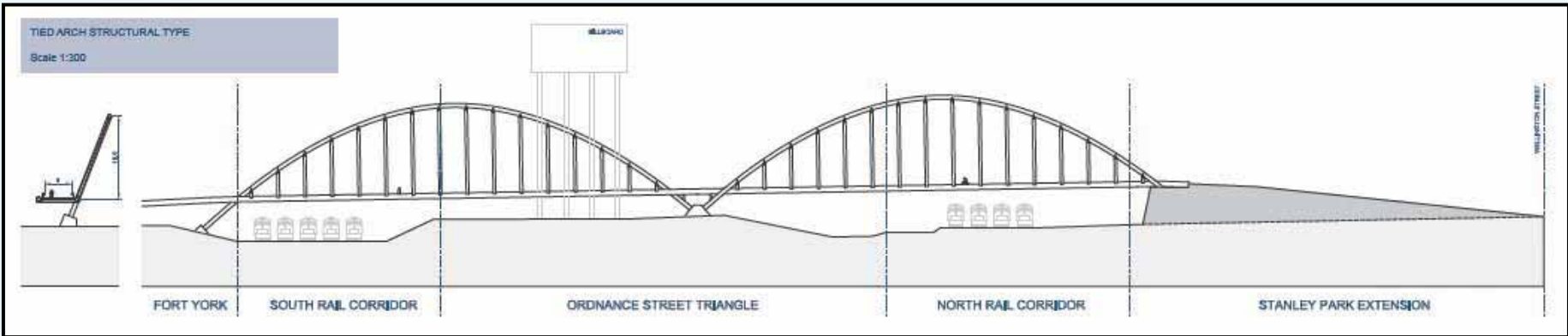
# ALTERNATIVE BRIDGE STRUCTURE TYPE 1

## Thru-Truss



# ALTERNATIVE BRIDGE STRUCTURE TYPE 2

## Tied Arch



# FORT YORK PEDESTRIAN AND CYCLE BRIDGE

## EVOLUTION OF THE FORT YORK BRIDGE

### CONSULTATION AND EVALUATION PROCESS

- Technical Advisory Committee
- City “Design Review Panel”
- Project Team
- Agency Feedback
- Public Feedback
- Detailed Impact Assessment

Select a “Recommended Preferred Design Concept”

# FORT YORK PEDESTRIAN AND CYCLE BRIDGE

## EVOLUTION OF THE FORT YORK BRIDGE

### REFINEMENT OF THE “RECOMMENDED PREFERRED DESIGN CONCEPT”

- How Does the Concept Fit into the Local Environment?
- Is the Concept Readily Constructible?
- What are the Impacts on the Natural and Social Environments?
- Are there Modifications Required to Achieve Project Objectives?
- Will the Concept be Acceptable to the Majority of Stakeholders?



# FORT YORK PEDESTRIAN AND CYCLE BRIDGE



# FORT YORK PEDESTRIAN AND CYCLE BRIDGE



# FORT YORK PEDESTRIAN AND CYCLE BRIDGE



# FORT YORK PEDESTRIAN AND CYCLE BRIDGE



# FORT YORK PEDESTRIAN AND CYCLE BRIDGE



# FORT YORK PEDESTRIAN AND CYCLE BRIDGE



# FORT YORK PEDESTRIAN AND CYCLE BRIDGE



North Parkette Viewed from Wellington Street

# FORT YORK PEDESTRIAN AND CYCLE BRIDGE



Bridge Ramp Entering South Parkette

# FORT YORK PEDESTRIAN AND CYCLE BRIDGE



Bridge Ramp Viewed from Garrison Common

# FORT YORK PEDESTRIAN AND CYCLE BRIDGE

## WHERE DO WE GO FROM HERE?

### 2009

- Finalize Recommendations Based on PIC # 2 Comments and Agency Circulation
- Complete **Environmental Study Report** (ESR)
- Review with Various City Committees
- Report to Council
- File ESR on Public Record for 30 Days

### 2010 – 2012

- Design and Construction
- Bridge Opening – Spring 2012

# ***QUESTIONS & ANSWERS***



**Stantec**

**MontgomerySisam**