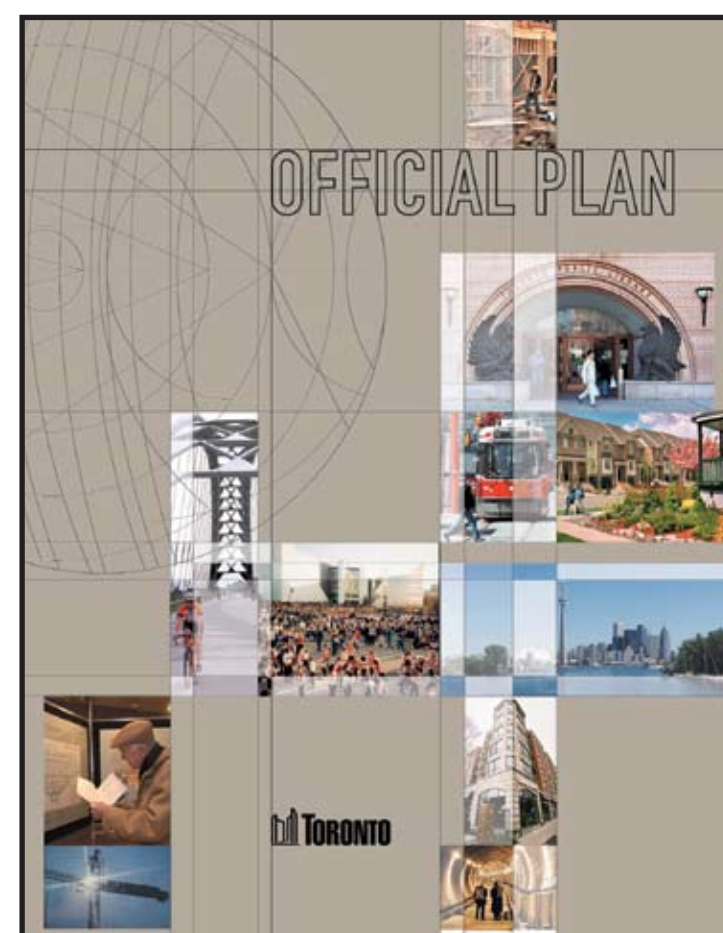


The study will be consistent with the policies and objectives of the:



## 1. OFFICIAL PLAN

The City's transportation network will be developed to support increased transit priority on selected bus and streetcar routes, including those identified on Map 5.

Transit priority measures may include:

- i) reserved or dedicated lanes for buses and streetcars; and
- ii) limiting or removing on-street parking during part or all of the day.

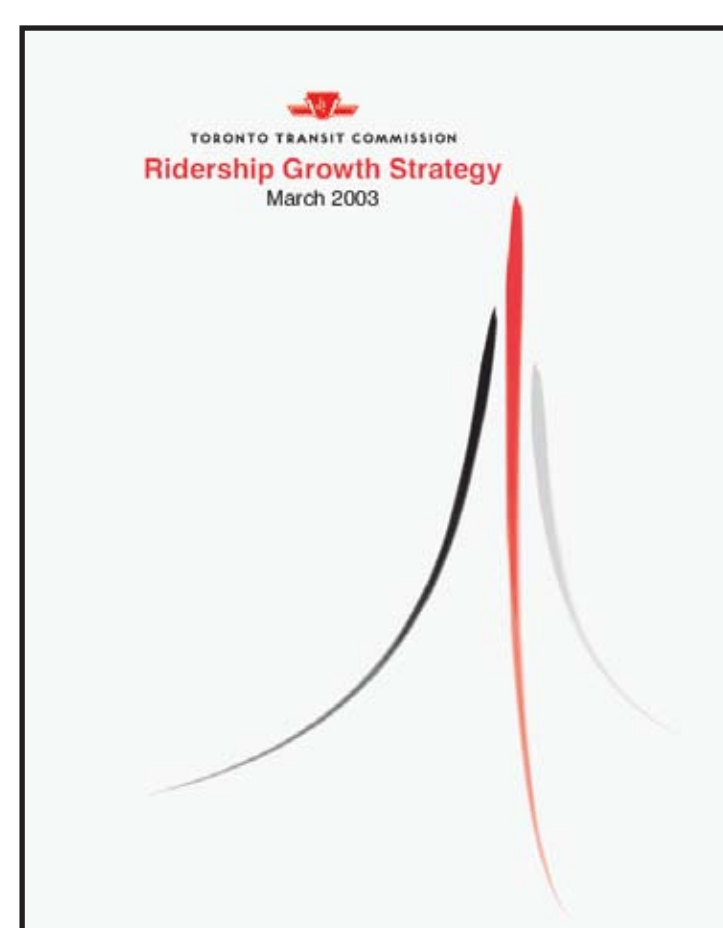
Policy - 2.2.3h



## 4. PROVINCIAL POLICY STATEMENT

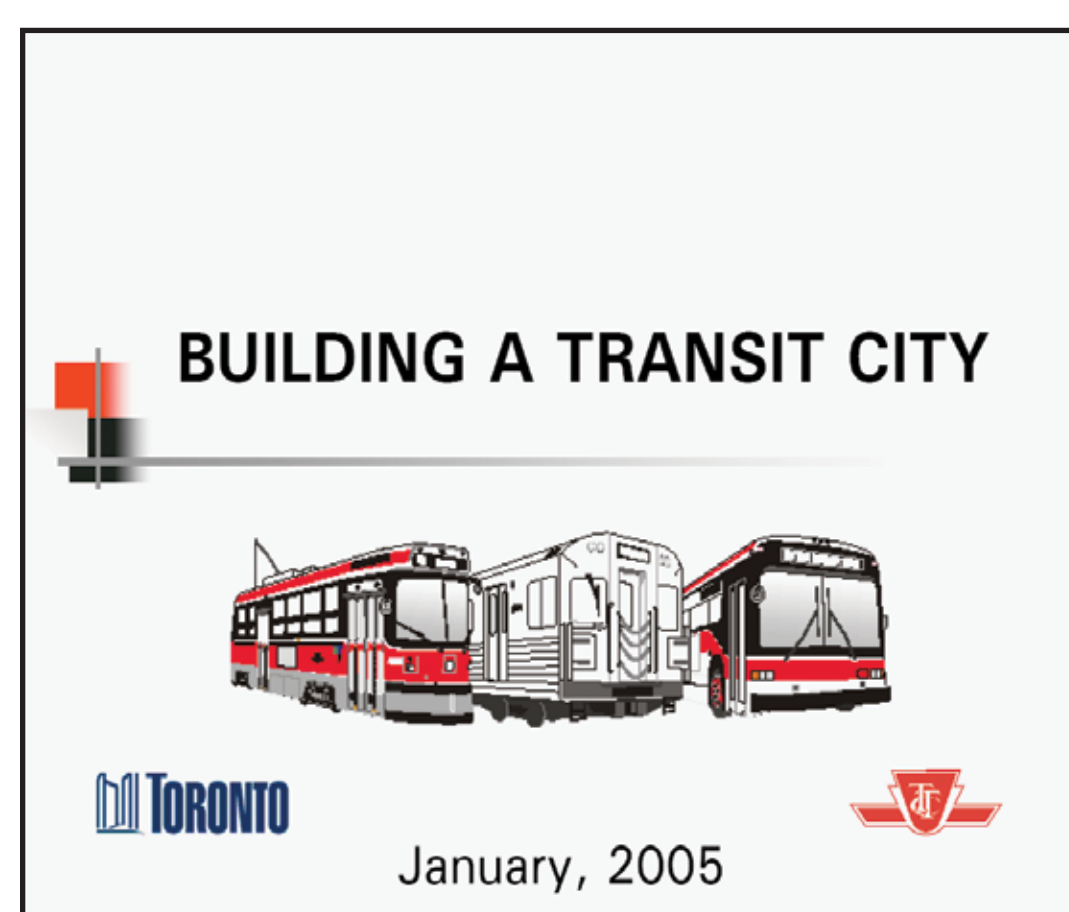
- Transportation, transit and infrastructure facilities are to be planned to meet current and projected needs, providing for an efficient, cost-effective, reliable multi-modal transportation system that supports long-term economic prosperity.
- Public transit and other alternative modes of transportation are to be supported to improve energy efficiency and air quality.

Policies - 1.6.6.1, 1.7.1 d), and 1.8.1 b)



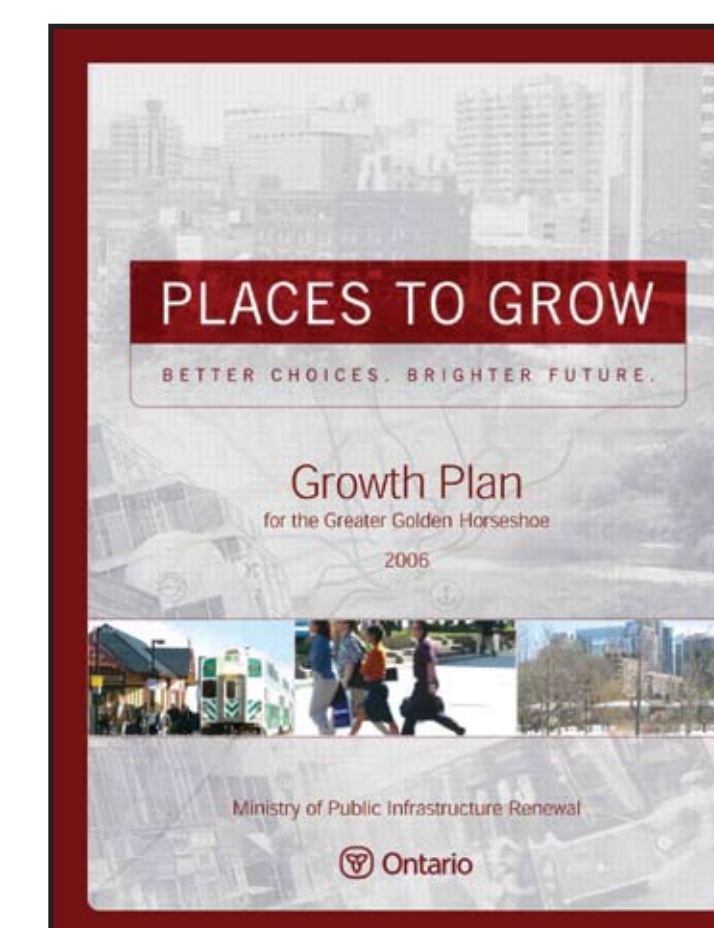
## 2. RIDERSHIP GROWTH STRATEGY

- Focuses on increasing service and improving the speed and reliability of the TTC by 2011.
- Identifies key corridors for transit infrastructure investment.



## 3. BUILDING A TRANSIT CITY

- Focuses on linking land use and transportation planning policies to create an effective strategy for accommodating the City's future trip growth.
- Identifies a network of corridors and environmental assessment studies.
- No one should be disadvantaged getting around Toronto if they don't own a car



## 5. GROWTH PLAN FOR THE GREATER GOLDEN HORSESHOE

- Public transit will be the first priority for transportation and major transportation investments.
- Major transit station areas and intensification corridors will be designated in official plans.
- Major transit station areas and intensification corridors will be planned to ensure the viability of existing and planned transit service levels
- Major transit station areas will be planned and designed to provide access from various transportation modes including pedestrians, bicycles, passenger drop-off.

Policies - 2.2.5, 3.2.3