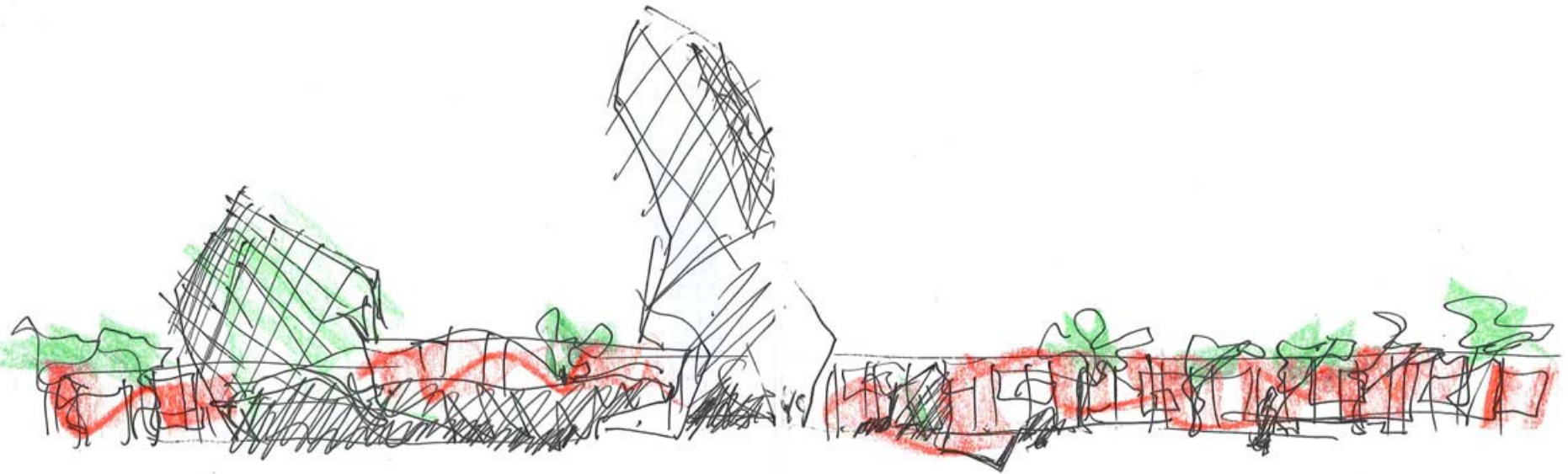




# Landscape & Urban Design Proposal

## CAPTURE THE MOMENT

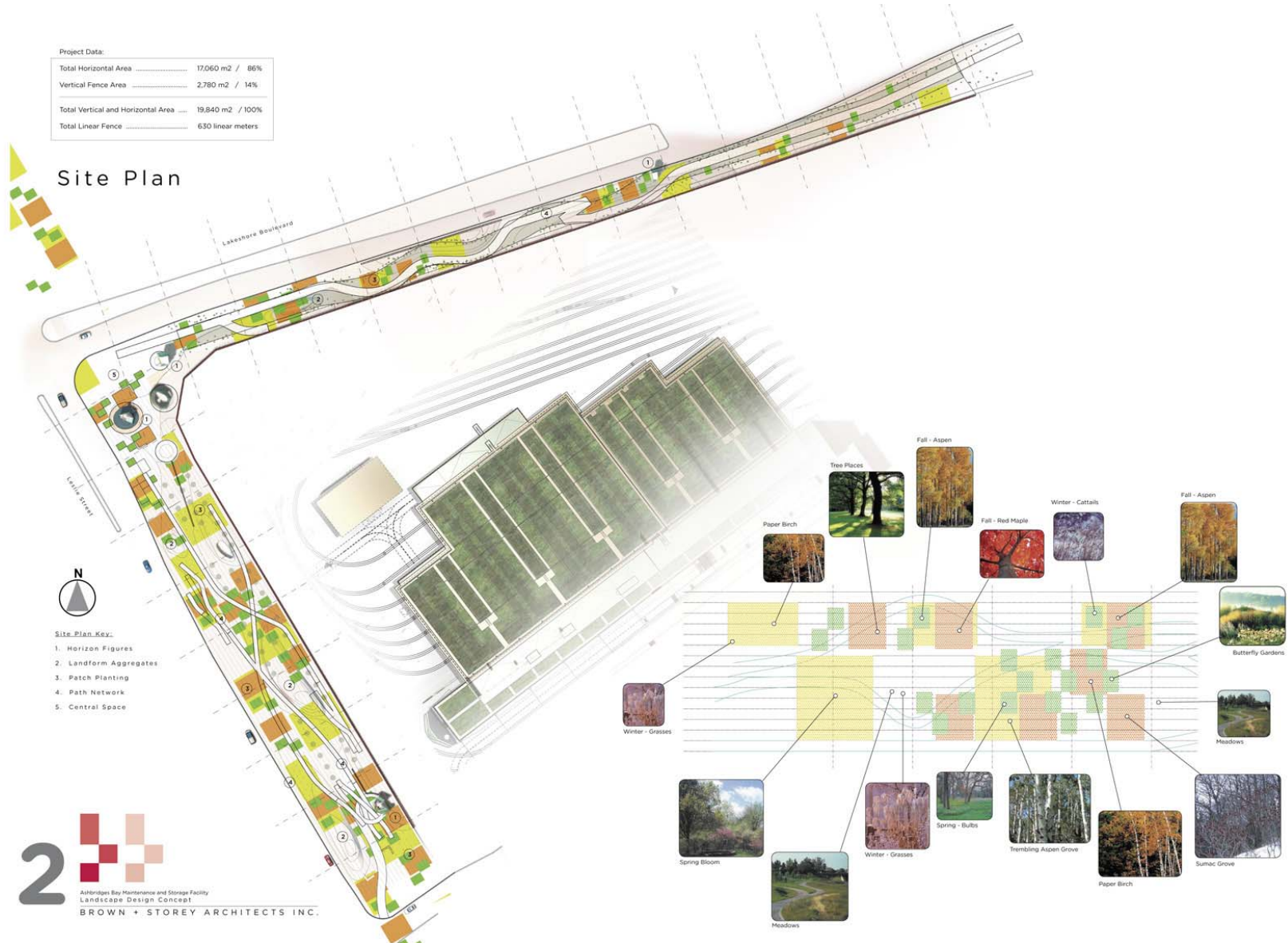




Project Data:

Total Horizontal Area	17,060 m <sup>2</sup> / 86%
Vertical Fence Area	2,780 m <sup>2</sup> / 14%
Total Vertical and Horizontal Area	19,840 m <sup>2</sup> / 100%
Total Linear Fence	630 linear meters

## Site Plan



- Site Plan Key:
1. Horizon Figures
  2. Landform Aggregates
  3. Patch Planting
  4. Path Network
  5. Central Space



Ashbridges Bay Maintenance and Storage Facility  
Landscape Design Concept  
**BROWN + STOREY ARCHITECTS INC.**

**Landscape Key:**

- Tree Places
- Paper Birch
- Fall - Aspen
- Fall - Red Maple
- Winter - Cattails
- Fall - Aspen
- Butterfly Gardens
- Meadows
- Winter - Grasses
- Spring Bloom
- Winter - Grasses
- Spring - Bulbs
- Trembling Aspen Grove
- Paper Birch
- Sumac Grove

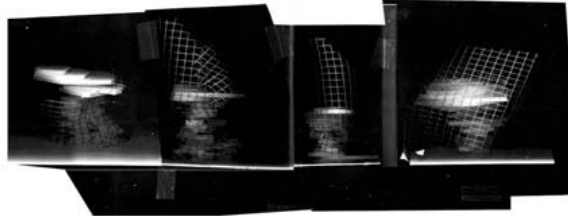


Concept A: Red Frieze



Horizon Figures:

Ghost Primitives



Interwoven Images



Structure

Frame

Skin

Substrate







