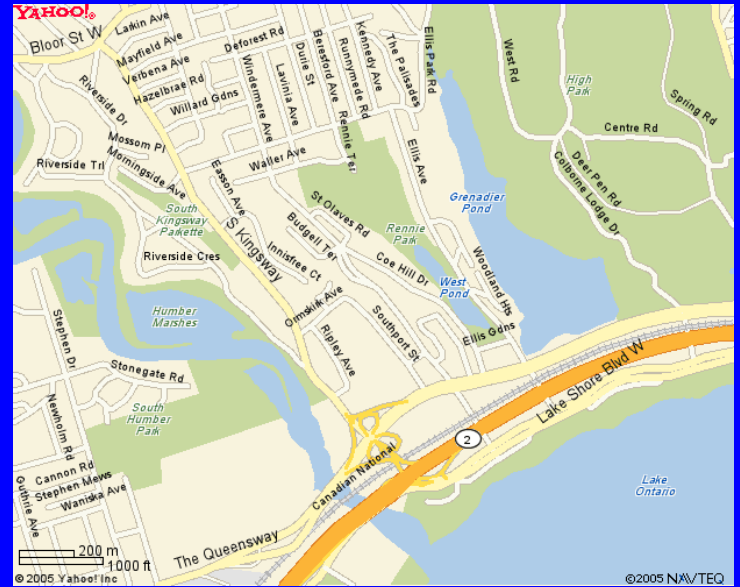


South Kingsway and The Queensway - Class Environmental Assessment Study

May 2006



Introduction and Agenda

- Purpose of Meeting
- Presentation
 - Study Purpose & Background
 - EA Process
 - Review of Alternatives
 - Criteria for Evaluation of Alternatives
 - Public Input & Comments
 - Next Steps

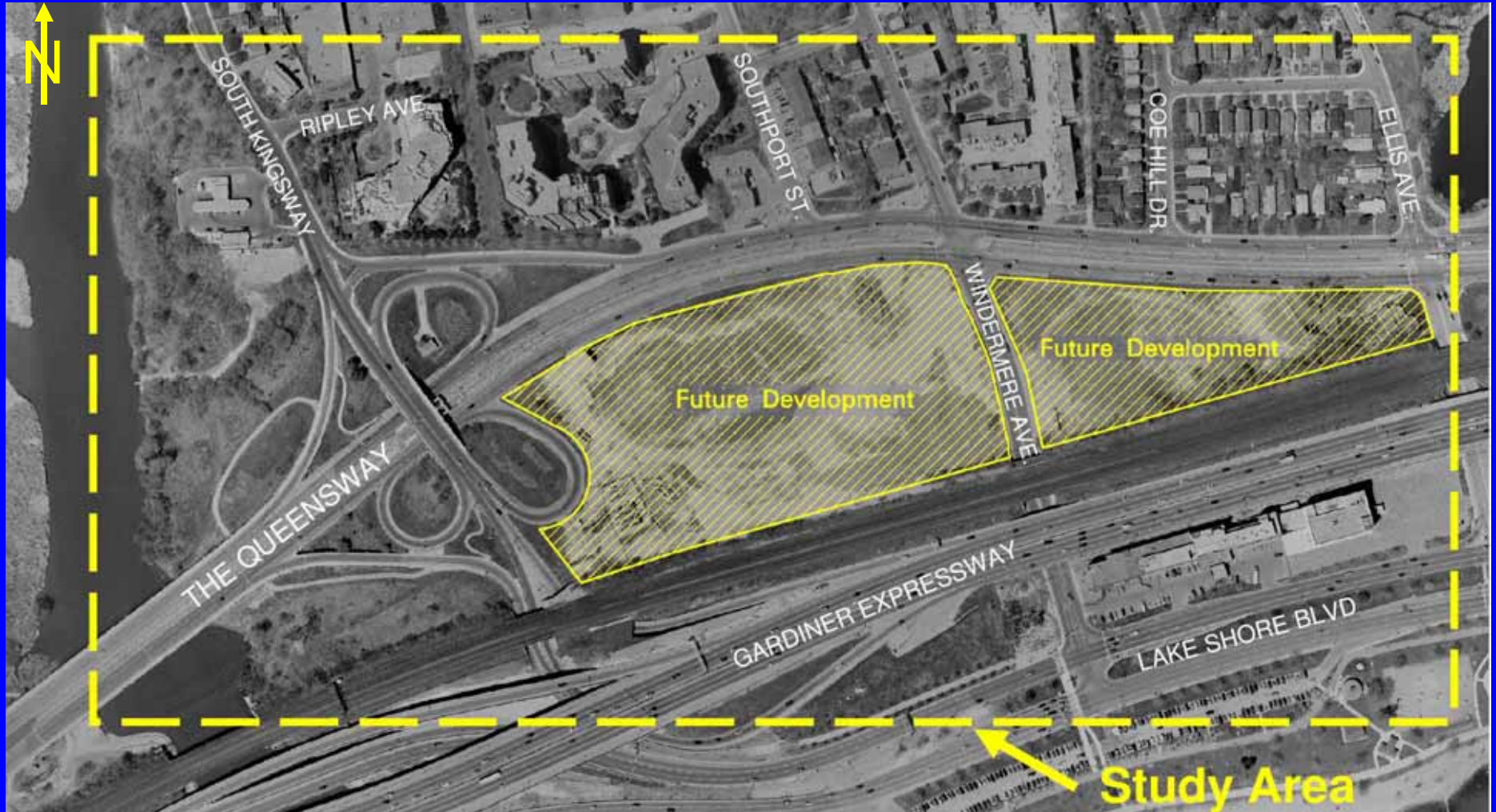
Study Purpose

To conduct an Environmental Assessment to identify potential improvements to the South Kingsway and The Queensway interchange.

Background

- Constructed in 1958
- Concerns for pedestrians, cyclists and transit users
- Reconstruction provides an opportunity

Study Area



Class Environmental Assessment

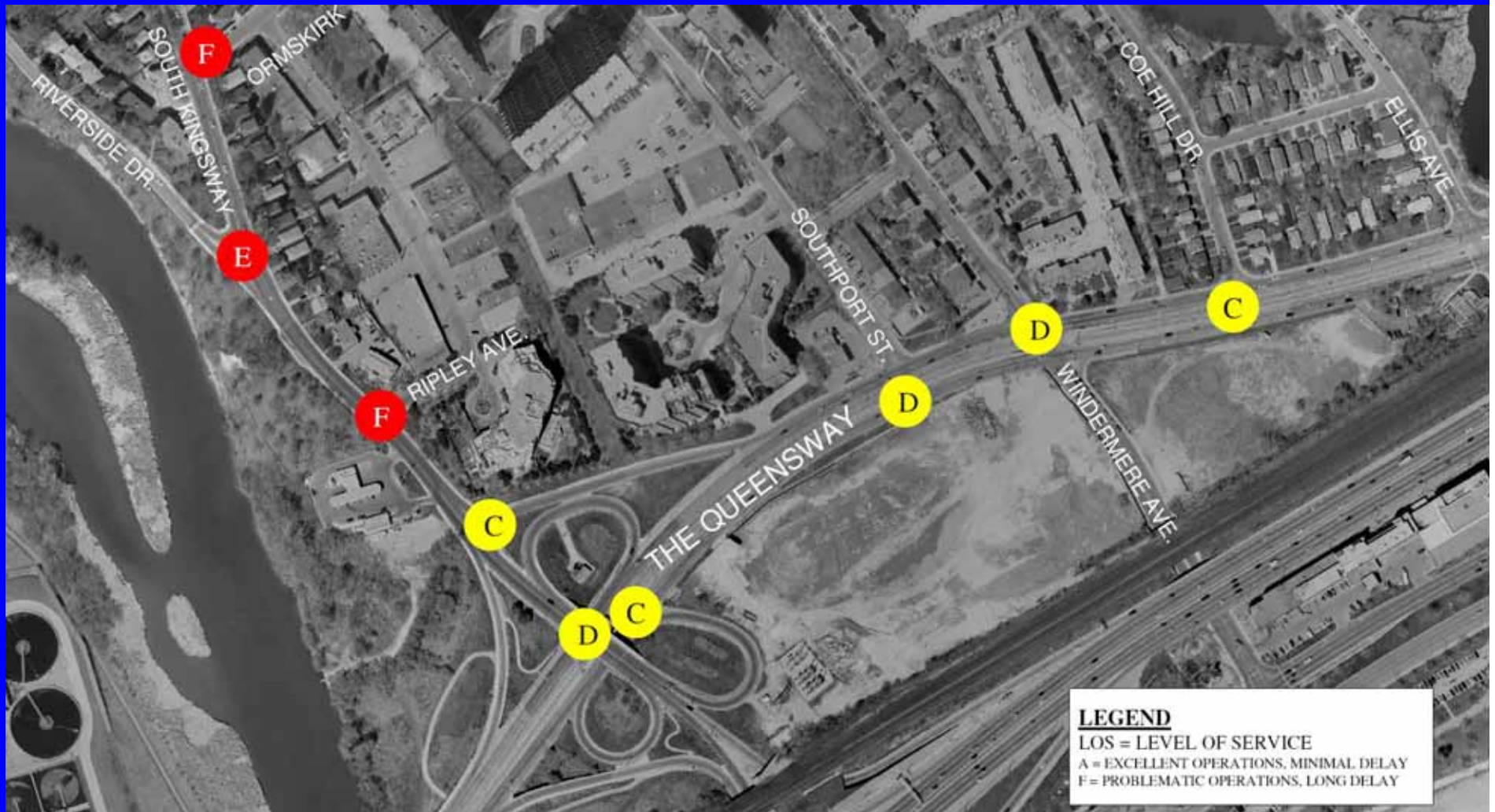
Schedule B Projects

- Identify Problem or Opportunity
- Develop and Evaluate Alternative Solutions
 - *Public Meeting No. 1 (May 2006)*
 - *Public Meeting No. 2 (June 2006)*
- Prepare Project File
 - City Council Approval (September 2006)
 - EA Study Approval (October/November 2006)
- Project Implementation

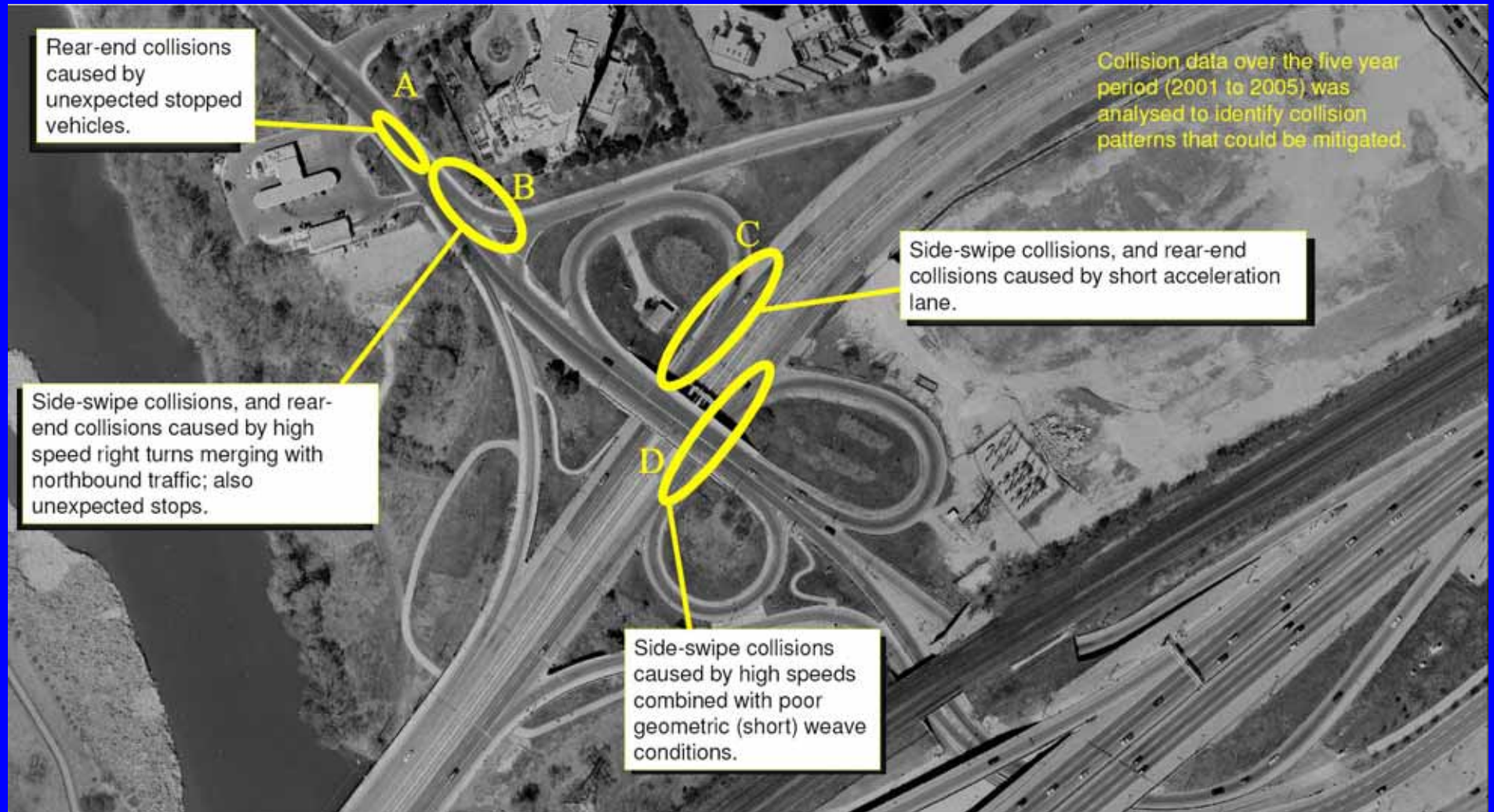
Existing Conditions – Traffic Operations



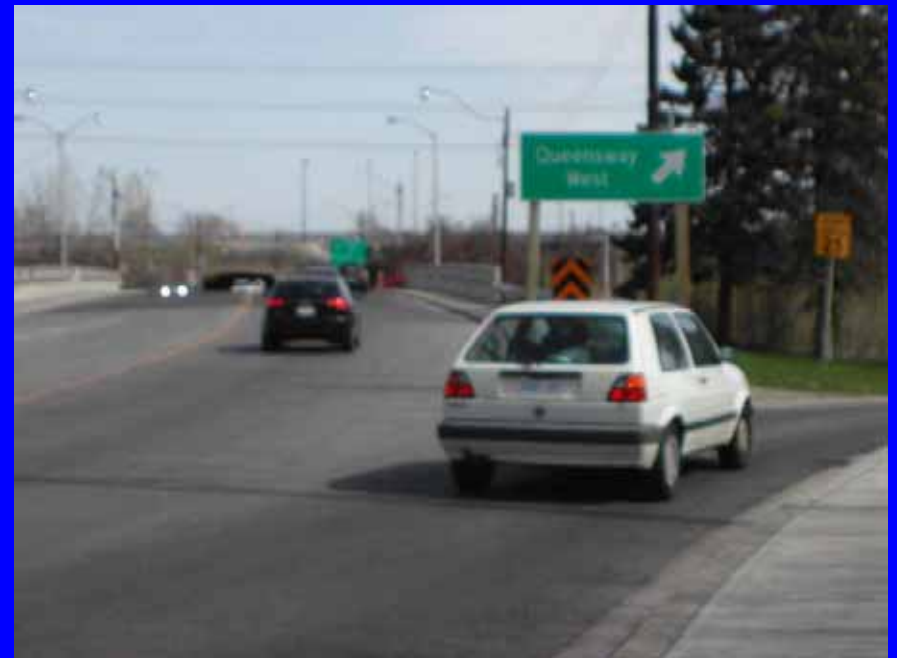
Existing Conditions – Traffic Operations



Existing Conditions – Collisions



Pedestrian and Cyclist Access/Safety Concerns



Pedestrian and Cyclist Access/Safety Concerns



Problem Statement and Opportunity

- Problem
 - Some traffic movements over capacity
 - Recurring collision types in weave areas
 - Cyclists and pedestrian safety and access through interchange
- Opportunity
 - Reconstruction of The Queensway

Guiding Principles

- No negative impacts to the Gardiner Expressway
- No larger footprint
- No physical intrusion into the neighbourhood
- Consistent with the Official Plan

Initial Screening

- Does alternative address the problem statement
 - Improve safety
 - Improve operations
 - Improve access

Criteria to Evaluate Short List

- Transportation Environment
- Social & Economic Environment
- Natural Environment
- Heritage Environment
- Costs

Alternatives

Do Nothing (baseline for comparison)

Diamond Interchange

At-Grade Intersection

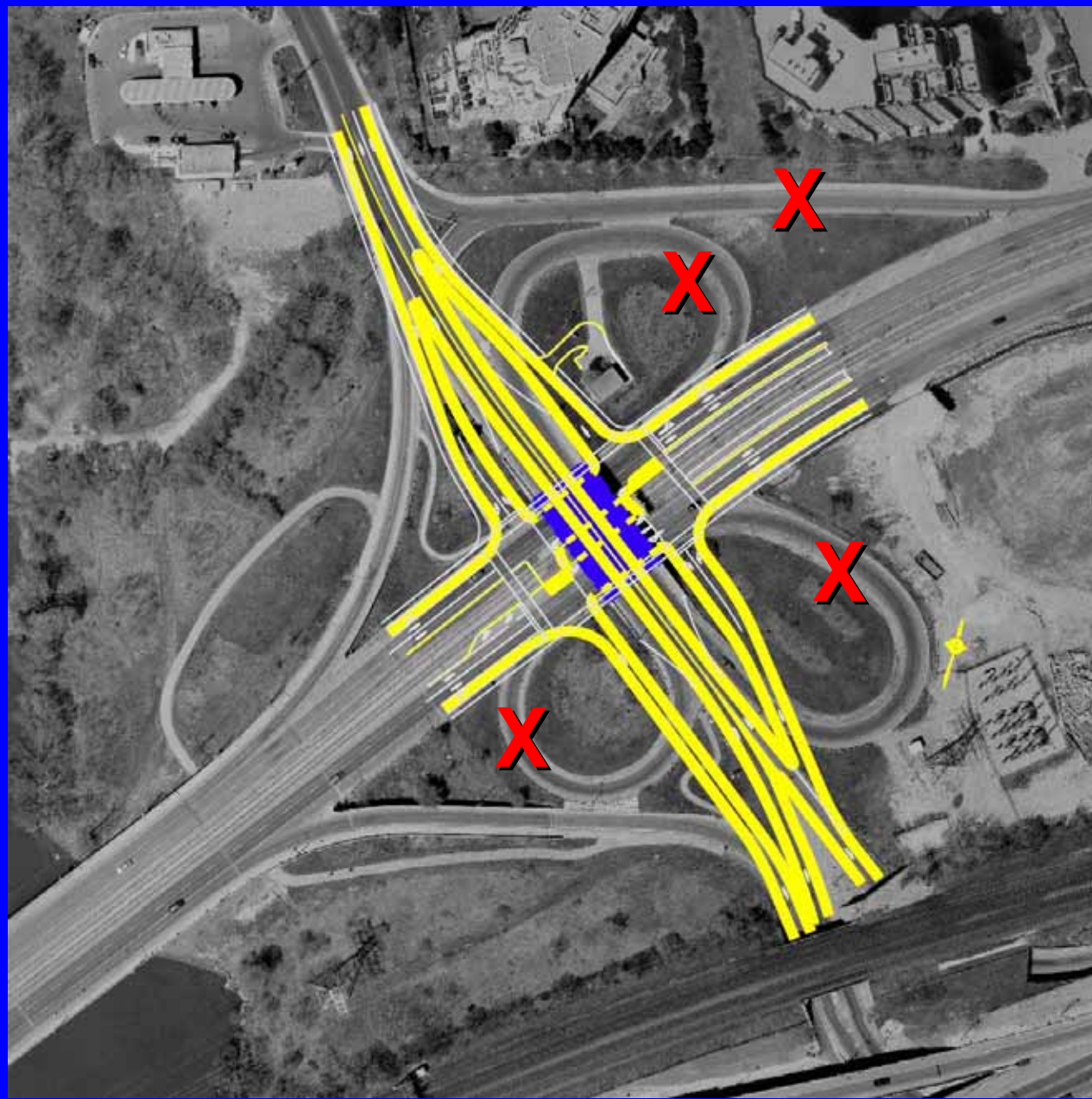
Roundabout

Link Road

Link Road Modified

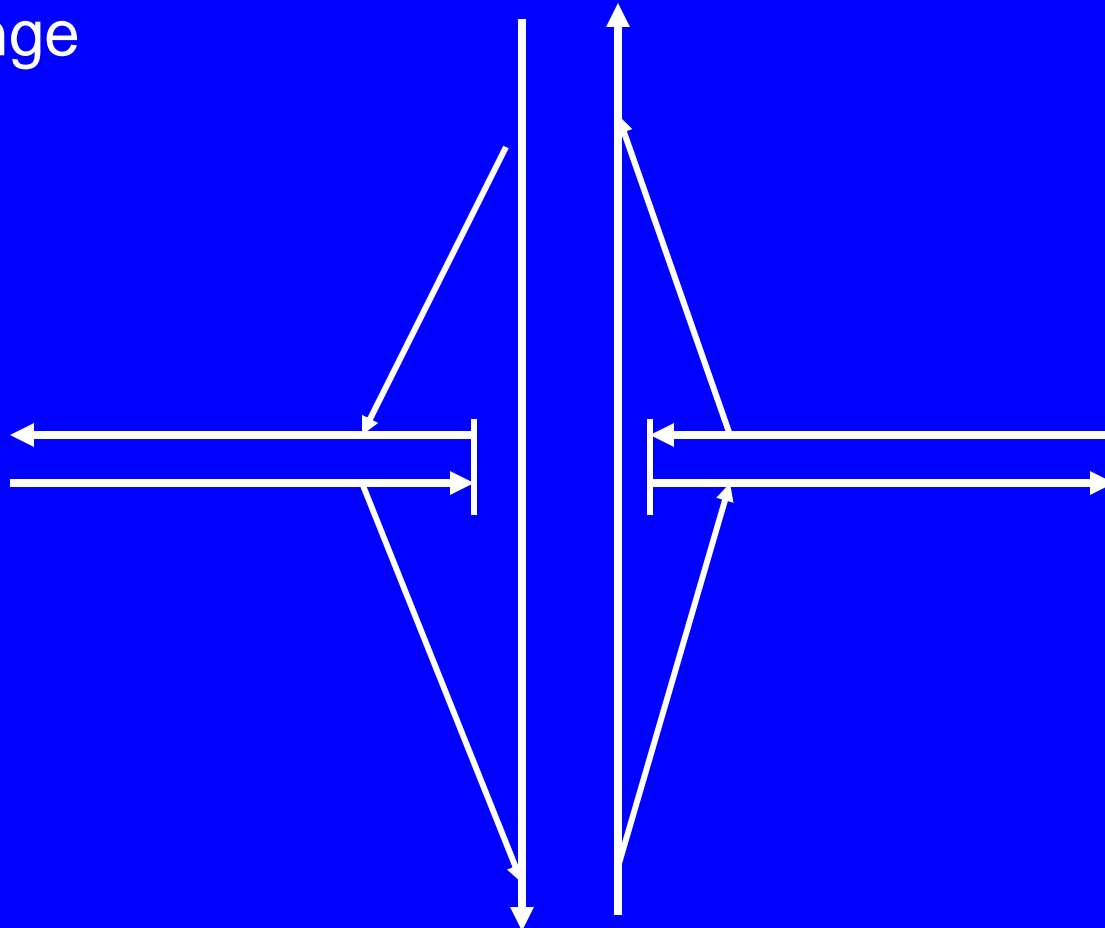
Alternatives

Diamond
Interchange



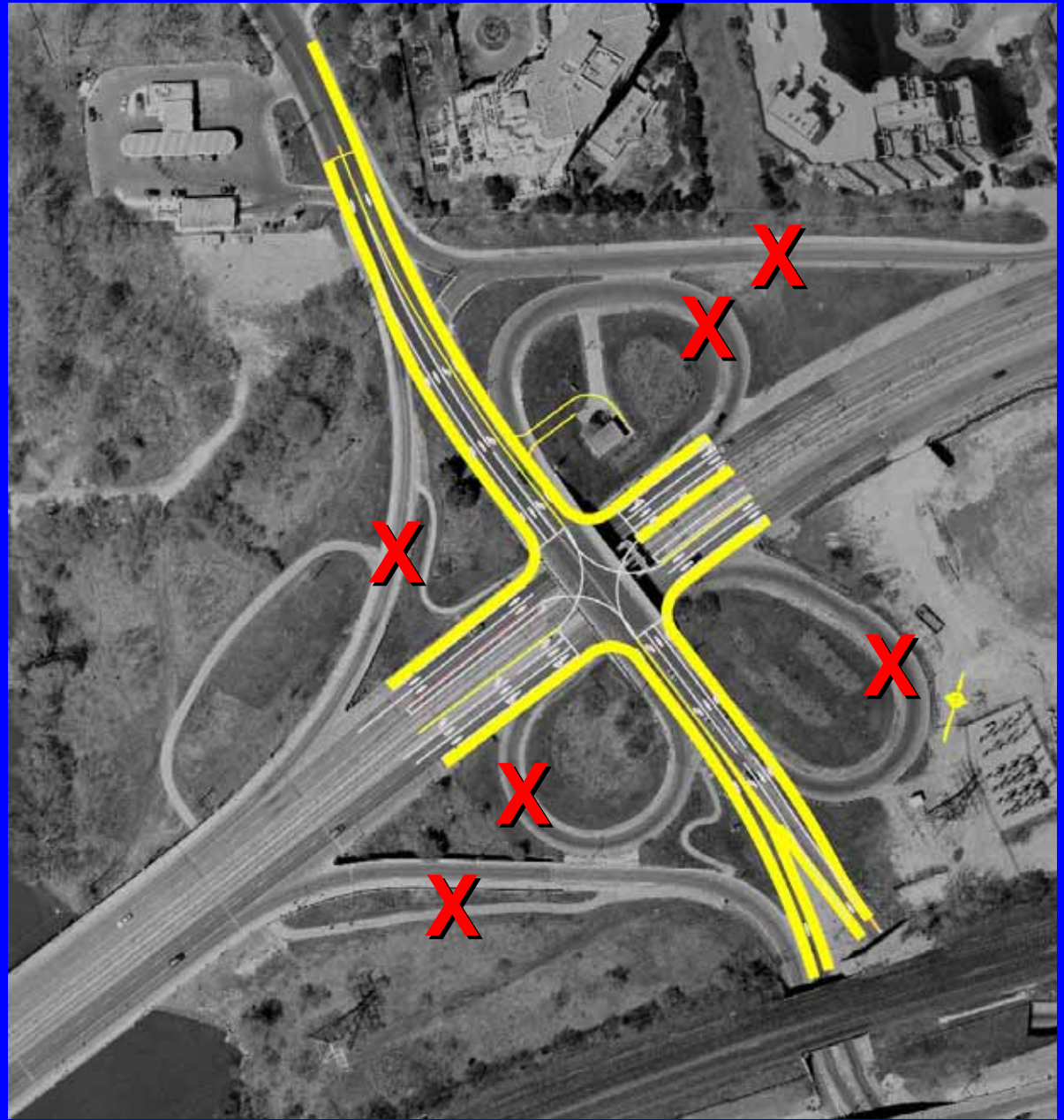
Alternatives

Diamond
Interchange



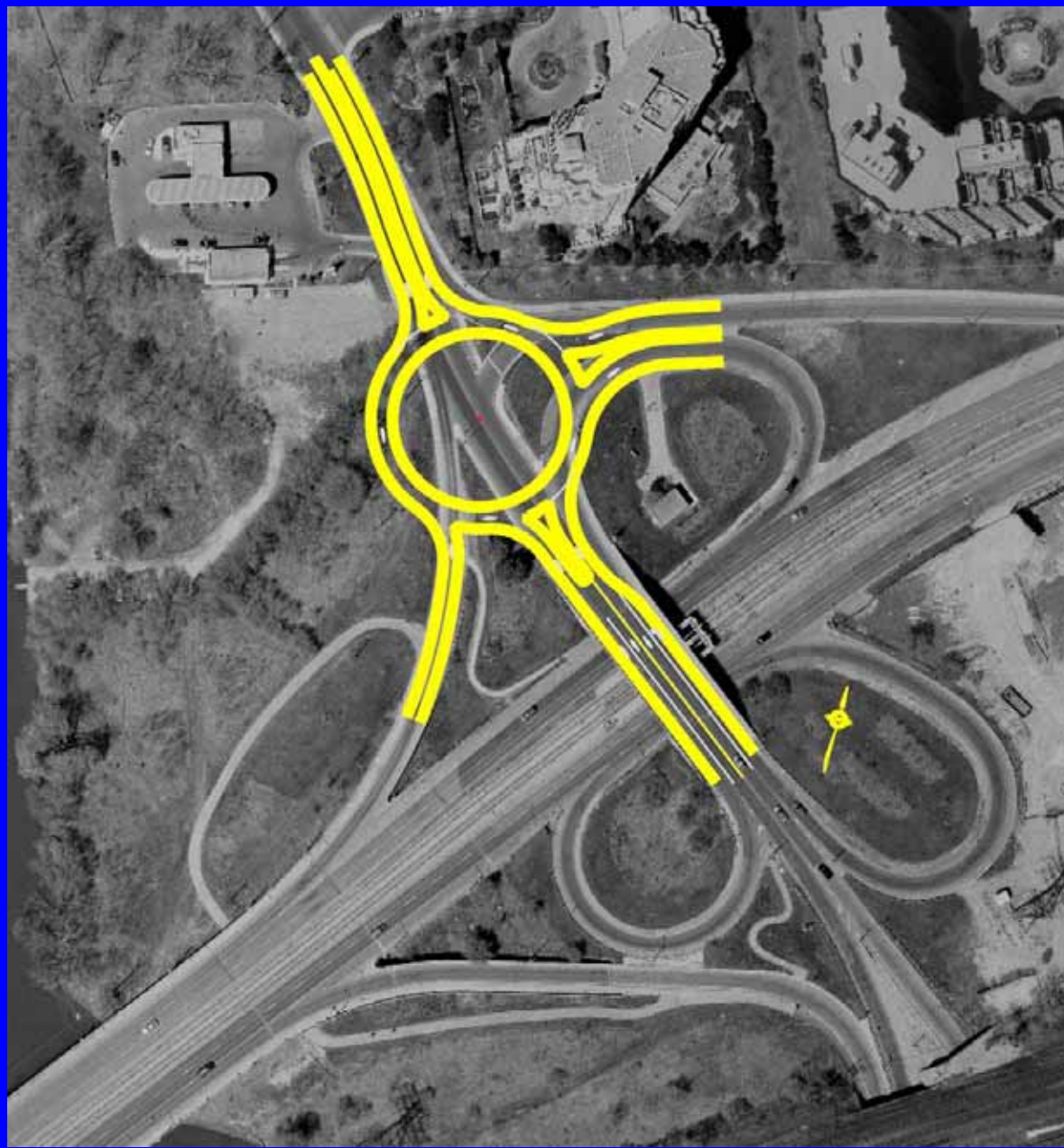
Alternatives

At-Grade
Intersection



Alternatives

Roundabout



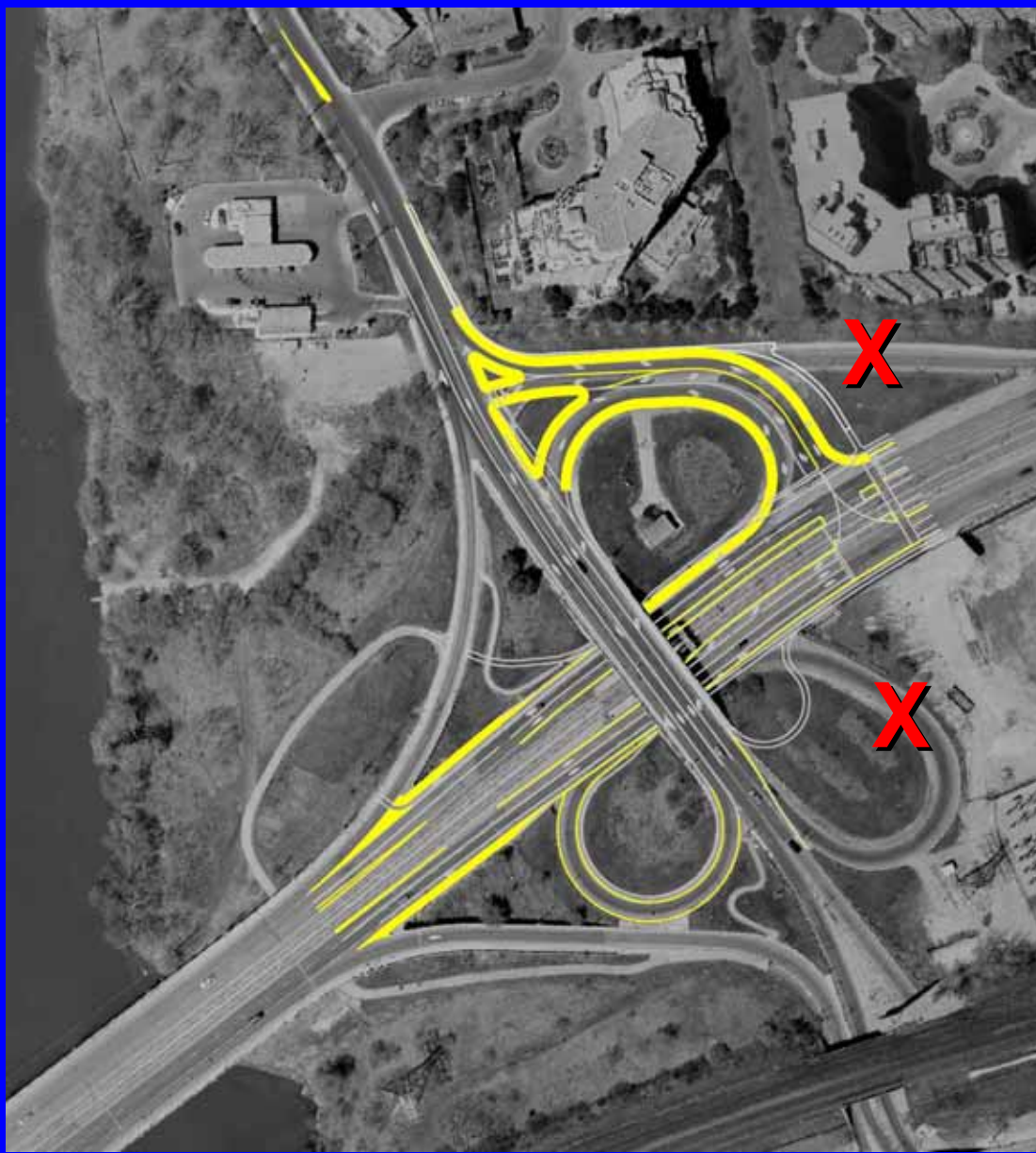
Alternatives

Link Road



Alternatives

Link Road
Modified



Next Steps

- Receive comments by May 15
- Review comments
- Finalize list of alternative solutions
- Conduct evaluation
- Next public meeting