

Comment Sheet

York-Bay-Yonge Interchange Reconfiguration EA

Public Open House #1

Westin Harbour Castle, 1 Harbour Square
September 23rd, 2009; 6:00 p.m. – 9:00 p.m.

1. How did you first hear about this Public Consultation?

- | | |
|--|--|
| <input type="checkbox"/> Mailed-out Advertisement
<input type="checkbox"/> E-mail
<input type="checkbox"/> Website
(specify): _____ | <input type="checkbox"/> Word of Mouth
<input type="checkbox"/> Local Newspaper
<input type="checkbox"/> Other _____ |
|--|--|

Study Purpose

The purpose of this study is to remove barriers and create connections for pedestrians and cyclists, enhance a sense of place and provide or improve high-quality urban amenities while maintaining existing traffic capacity.

2. Describe some of your favourite places within the study area, and areas which you tend to avoid. Why do you like/dislike these areas? Alternatively, please snap a photo of these areas, and e-mail with your comments to YBYphotos@toronto.ca.

3. Where do you currently walk and cycle? Where would you wish you could walk or cycle? Alternatively, please snap a photo of these areas, and e-mail with your comments to YBYphotos@toronto.ca.

4. If you could see one improvement made in the study area, what would it be?

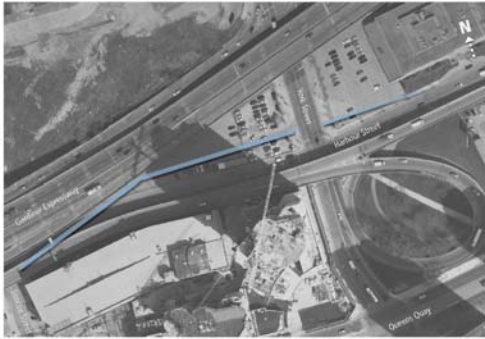
5. Please provide any comments you have about any of the six preliminary ramp options:



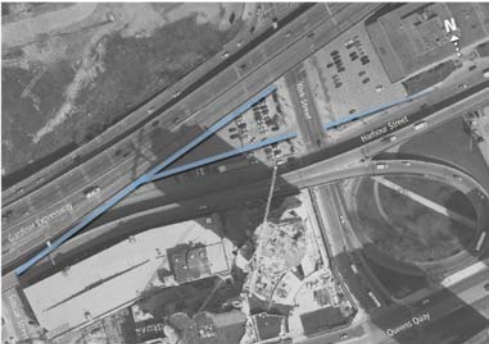
Option 1 – Do Nothing



Option 2 – Ramp ending at Lower Simcoe Street



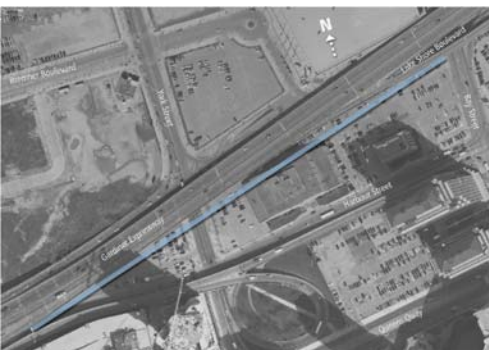
Option 3 – Realignment closer to elevated expressway, ramp ending at York Street



Option 4 – Same as Option 3, but north-bound traffic on York Street would be separated



Option 5 - Ramp ending at York Street



Option 6 – Realignment closer to the elevated expressway, ramp ending at Bay Street

6. Please provide any comments about the possibility of closing the Bay Street – Eastbound Gardiner Expressway ramp.

.....

Please submit your comment sheet to City staff before you leave, or mail us your comment sheet (by **October 7th, 2009**) using the postage paid envelopes available at tonight’s event. For more information on the York-Bay-Yonge Interchange Reconfiguration Environmental Assessment, please contact:

Mike Logan, Public Consultation Unit
 55 John Street, Metro Hall, 19th floor, Toronto, ON M5V 3C6
 Phone: (416) 392-2962, Fax: (416) 392-2974, E-mail: mlogan@toronto.ca