

# **Bicycle Lane**

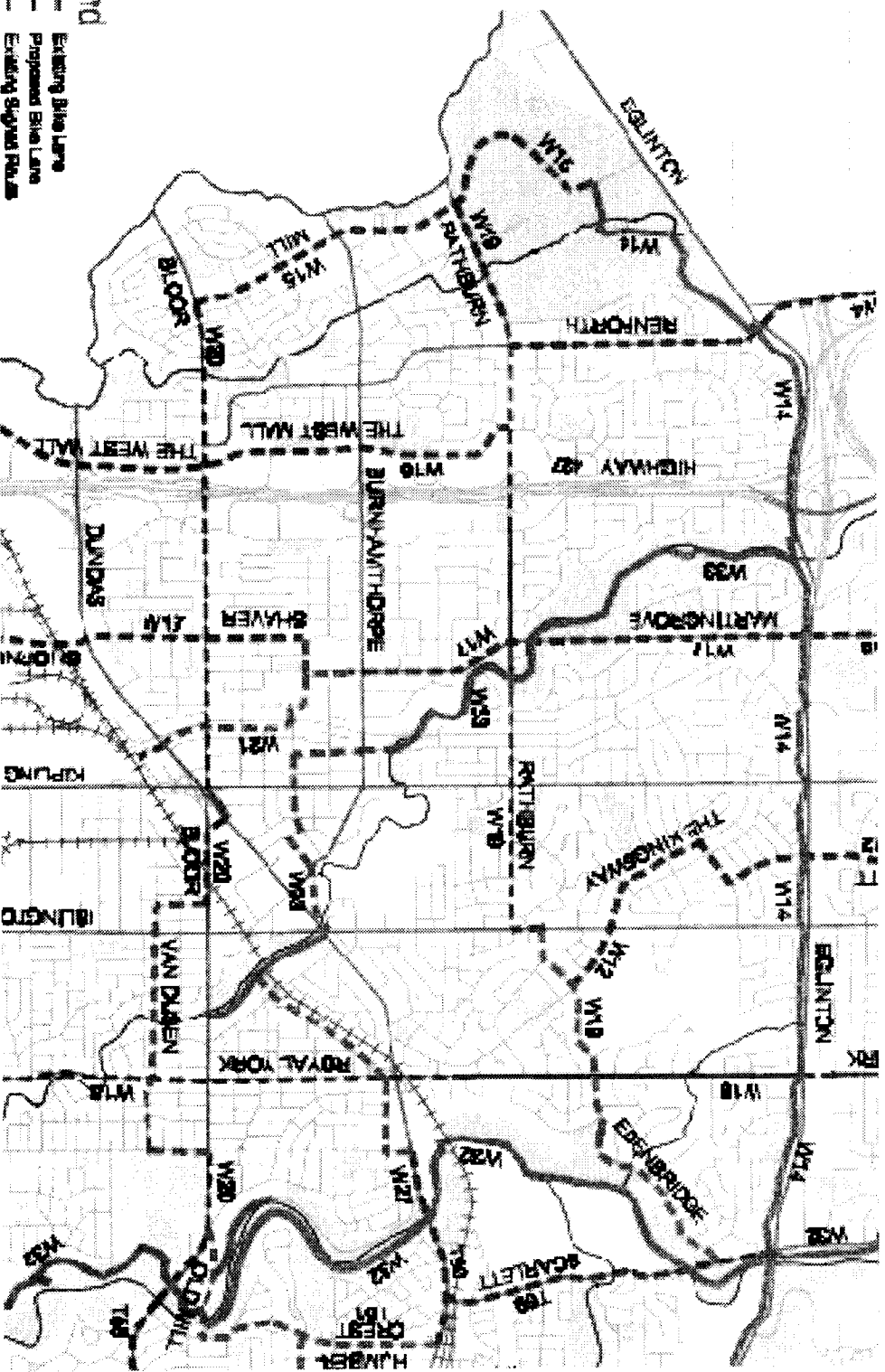
## **State of Good Repair 2010**

**Presentation to the Toronto Cycling Advisory Committee  
18 January 2010**

**Lukasz Pawlowski, P.Eng.**

**TORONTO**

Cycling Infrastructure and Programs staff conducted an audit to assess the condition of all existing bicycle lane.

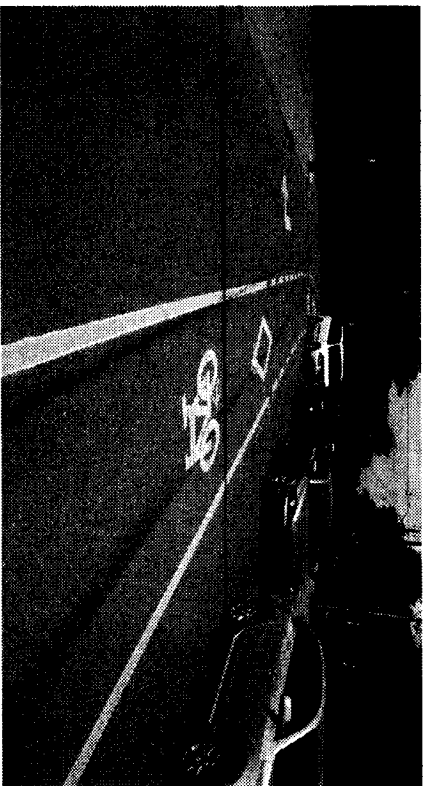


- Legend**
- Existing Bike Lane
  - Proposed Bike Lane
  - Existing Signed Route
  - Proposed Signed Route
  - Existing Off-Road
  - Proposed Off-Road

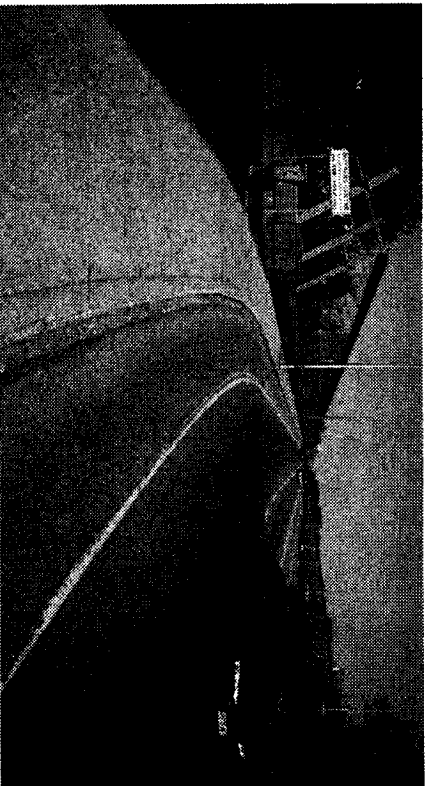


**Visual inspections were undertaken, making note of surface condition, pavement markings, and missing signage.**

---



Millwood Rd. south of the bridge.



Bloor St. E. west of the viaduct



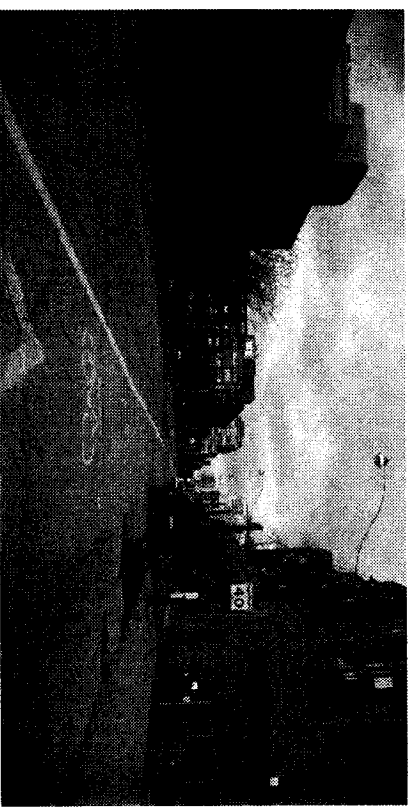
Moore Ave.

**Surface condition has been categorized as Priority One, Two, or Three depending upon the severity of damage and need for repair.**

---



Shuter St. east of Jarvis St. — Priority One



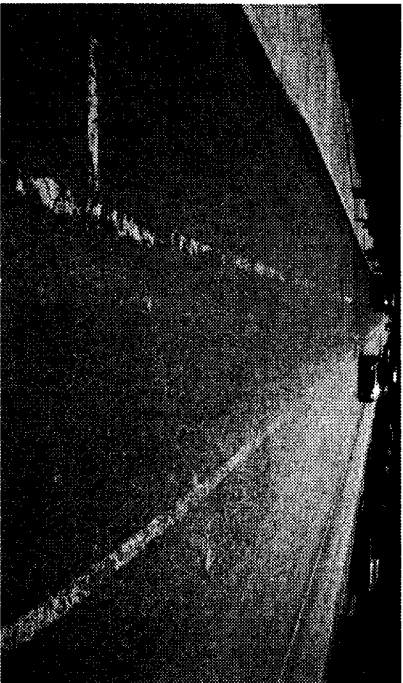
Runnymede Rd. south of Bloor St. W. — Priority Two



Jarvis St. south of Dundas St. E. — Priority Three

**Pavement marking deficiencies included faded or non-existent lines and symbols. Intersection gaps were also noted.**

---



Runnymede Rd. south of Bloor St. W.



Wellesley St. east of Jarvis St.



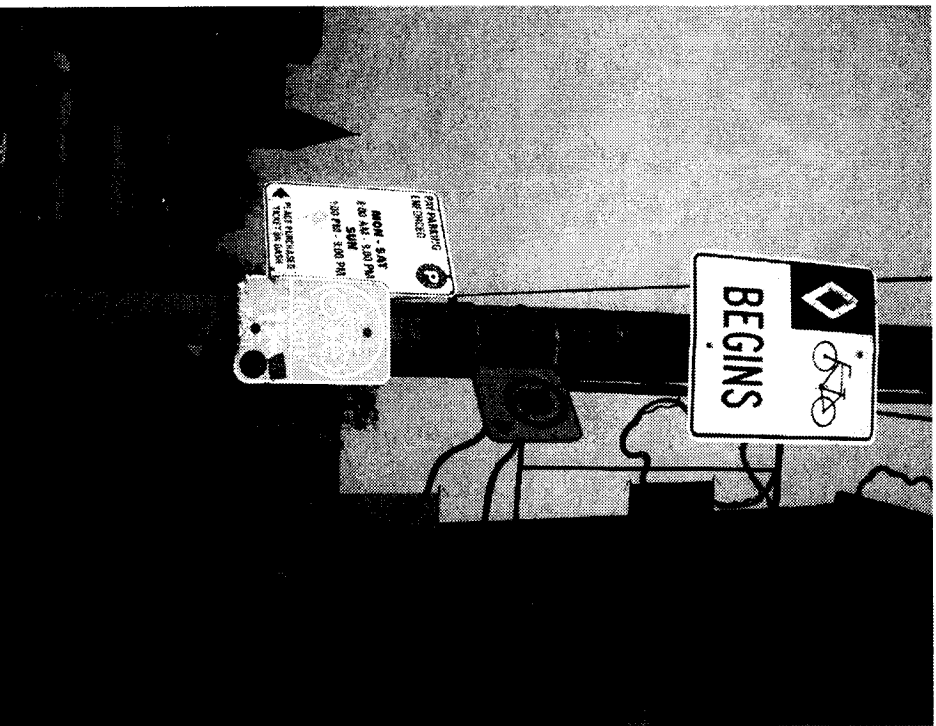
Dupont St. west of Lansdowne Ave.



Runnymede Rd. south of Annette St.

# Missing Signage included Bike Lane Begins/Ends signage and Bikeway Route signage.

---



College St. west of Spadina Ave.



Royal York Rd. south of Eglinton Ave. W.

**A few things were discovered that required us to call 3-1-1 right away.  
(We encourage you to do the same.)**

---



Poplar Plains Rd. south of St. Clair Ave.

All of this information has been compiled into a comprehensive database detailing where maintenance is required.

Streets	Segments	Dir.	Pavement Condition	Priority
Harbord St.	east of Grace at 226 Harbord	EB	Pothole (photo 4)	1
Harbord St.	exit end of intersection at Manning	EB	Sunken sewer grate and poor surrounding pavement (photo 5)	1
Poplar Plains Rd	south of Cottingham St.	NB	Potholes	1
Poplar Plains Rd	north of Edmund Av.	NB	Very rough surface	1
Poplar Plains Rd	Lynwood Av. to St. Clair Av.	NB	Very rough surface	1
Poplar Plains Rd	Note: the whole street looks very old			
Russell Hill Rd/Boulton	at St. Clair Av.	SB	A mound of asphalt blocks bike lane	1
Sherbourne St.	Elm St. to Bloor St.	SB/NB	Very rough and cracked surface	1
Sherbourne St.	south of Howard St.	SB	Very rough and cracked surface	1
Sherbourne St.	north of Earl St. to Carlton St.	SB	Very rough and cracked surface	1
Sherbourne St.	Gerrard St. to Queens Quay	SB/NB	Very rough and cracked surface	1
Shuter St.	River Street to Jarvis St.	EBWB	Very rough and cracked surface	1
Shuter St.	Church St. to Yonge St.	WB	Construction site	1
Shuter St.	Victoria St. to Bond St.	EB	Very rough and cracked surface	1
Shuter St.	Note: Due to construction the WB bike lane between Church St. and Victoria St. is gone			
St. George St.	Dupont St. to Bloor St.	NB/SB	Very poor surface	1
Strathcona Av.	Carlaw Av. to Pape Av.	EB	Very poor surface	1

## Next Steps – Signage and Pavement Markings

---

### Signage

- To be addressed in our 2010 program

### Pavement Markings

- To be addressed in our 2010 program
- Some issues will require Council Approval (missing sections)

## Next Steps – Pavement Conditions

---

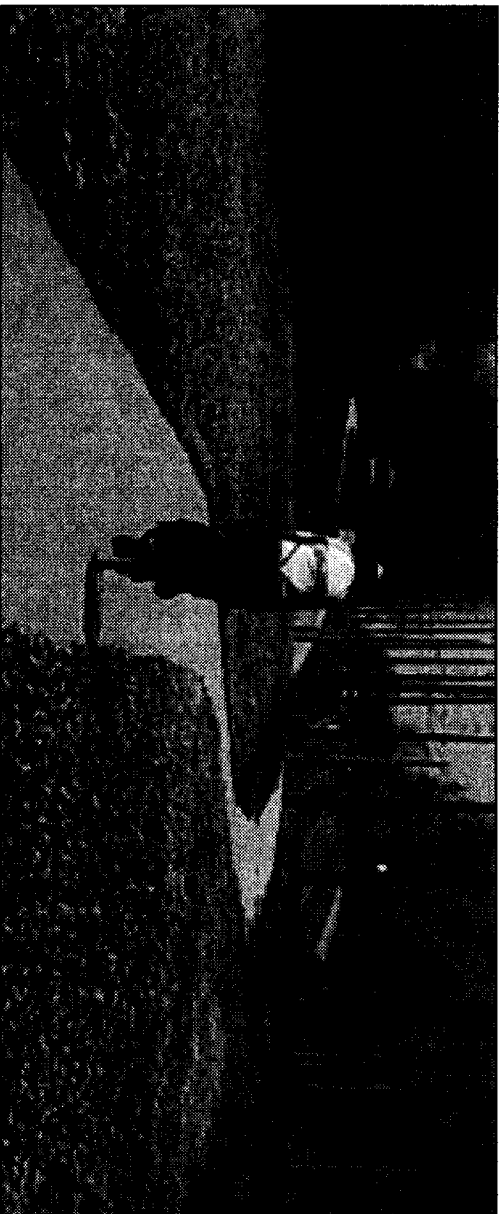
- **Cycling Infrastructure, Surface Maintenance and Road Operations will review compiled list**
- **Work to be coordinated with Capital Program**
- **Intent to remedy the deficiencies in 2010**



## Moving Forward

---

- Will be conducting annual State of Good Repair audits of on-street facilities.
- Developing similar audit for trail infrastructure.



**Thank You – Questions?**

---



Esther Shiner Blvd. west of Old Leslie St.