

Authority: Land Use Committee (former City of Toronto) Report No. 9(6)
June 23 and 24, 1997
Intended for first presentation to Council: Not applicable
Adopted by Council: Not applicable

CITY OF TORONTO

BY-LAW No. 270-1998 (OMB)

**To amend Section 18 of the Part I Official Plan
with respect to lands known municipally as Nos. 21 and 23 Sultan Street,
part of 110 Charles Street West and part of 95 Queen's Park,
to be known as 110 Charles Street West.**

WHEREAS Council, at its meeting held on the 23rd and 24th days of June, 1997, adopted Clause 6 of Land Use Committee Report No. 9 as a settlement of the proposed official plan amendments and zoning by-law amendments and the appeal of By-law No. 425-93, all currently before the Ontario Municipal Board; and

WHEREAS the Board having held a hearing on the referral has approved an amendment in accordance with an agreed upon settlement by the Owner and City Council;

THEREFORE pursuant to the Partial Order of the Ontario Municipal Board issued November 25, 1997, Board File Nos. M900024, O900088, O900184, Z900007 and R930372, being Decision/Order No. 1667;

1. The text and map annexed hereto as Schedule "A" are hereby adopted as an amendment to Section 18 of the Official Plan for the City of Toronto.

2. This is Official Plan Amendment No. 117.

PURSUANT TO THE ONTARIO MUNICIPAL BOARD PARTIAL ORDER ISSUED NOVEMBER 25, 1997.

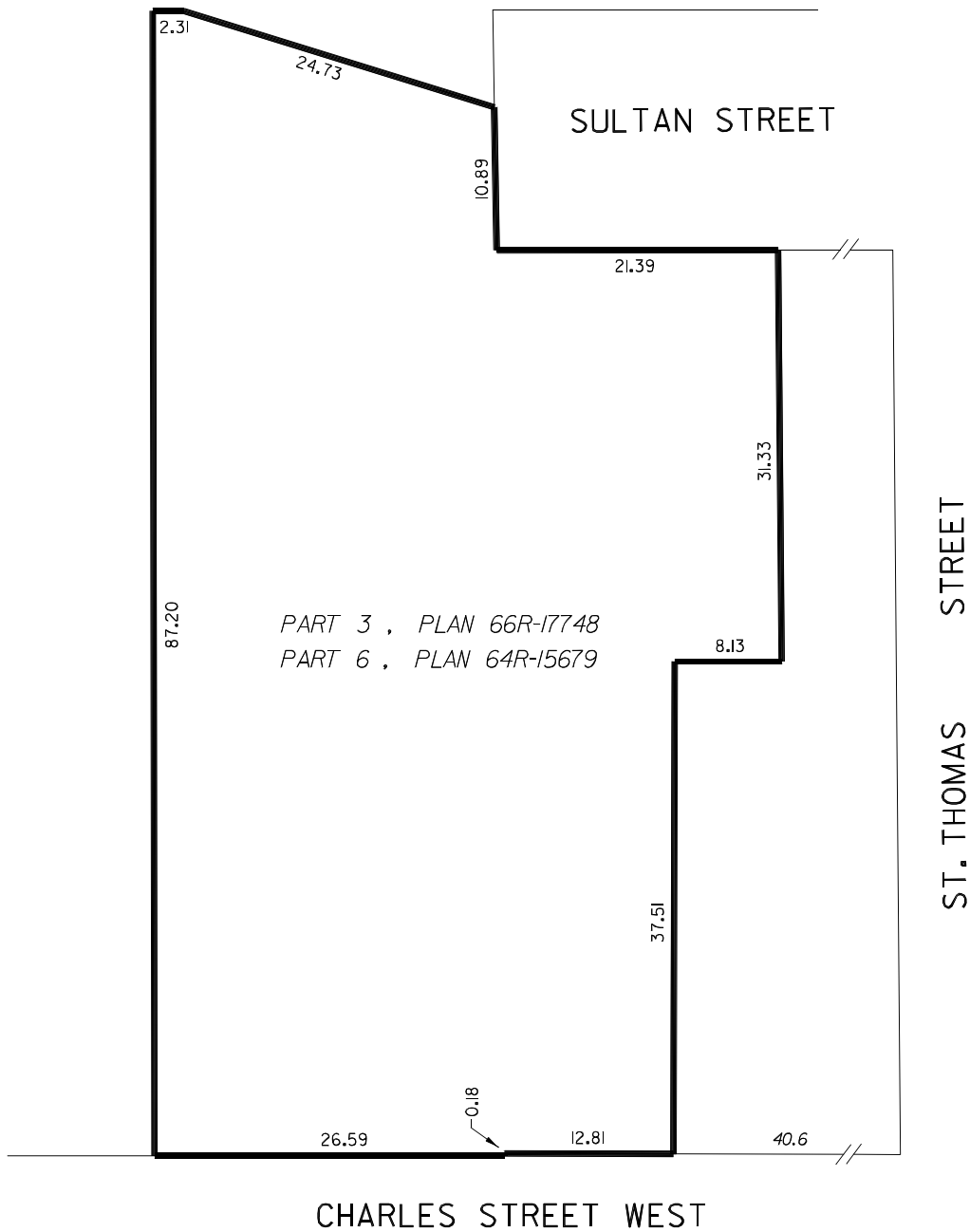
SCHEDULE "A"

1. Section 18 of the Official Plan for the City of Toronto is hereby amended by adding Section 18.425 and Map 18.425 as follows:

"18.425 Lands known as Nos. 21 and 23 Sultan Street, part of 110 Charles Street West and part of 95 Queen's Park to be known as 110 Charles Street West

Despite Map 1 and the *gross floor area* permission set forth in Section 13.3, for the *lot* outlined by heavy lines on Map 18.425 the maximum permitted *gross floor area* shall not exceed 2.0 times the area of such *lot*."

MAP 18.425



CITY WORKS SERVICES
SURVEY AND MAPPING SECTION
TORONTO NOVEMBER, 1997
DPA2/18425.DGN
FILES: C43-Z3, 2402.53-3
MAP No. 50H-323 DRAWN: PG