

Authority: Toronto Community Council, Report No. 14, Clause No. 5,
as adopted by City of Toronto Council on November 25, 26 and 27, 1998.
Enacted by Council: February 4, 1999

CITY OF TORONTO

BY-LAW NO. 69-1999

**To amend the General Zoning By-law No. 438-86 of the former City of Toronto
with respect to lands known as 69 Prescott Avenue.**

The Council of the City of Toronto HEREBY ENACTS as follows:

1. None of the provisions of Sections 4(1)(a), 9(1)(a) and (e), 9(3) Part II 1 and 12(2)25 of By-law No. 438-86, being "A By-law To regulate the use of land and the erection, use, bulk, height, spacing of and other matters relating to buildings and structures and to prohibit certain uses of lands and the erection and use of certain buildings and structures in various areas of the City of Toronto", as amended, shall apply to prevent the erection and use of not more than five *detached houses* and uses *accessory* thereto on the lands shown on Map 1 attached to and forming part of this By-law, provided:

- (1) each *detached house* is erected and maintained on a separate *lot*, each *lot* having not less than 7.0 metres of *frontage*;
- (2) the *height* above *grade* of each *detached house* does not exceed 10 metres;
- (3) the *residential gross floor area* of each *detached house* does not exceed 186 square metres;
- (4) not less than one *parking space* is provided for each *detached house* in a *private garage*; and
- (5) no part of each *detached house* above *grade* extends beyond the area outlined by heavy lines shown on Map 2.

2. Notwithstanding the continued designation of the lands shown on Map 1 as I1 D2, for the purposes of this By-law the provisions of Section 6(3) Part IX(1)(a), (b), (c)(ii) and c(iii) of By-law No. 438-86, as amended, shall apply.

3. For the purposes of this By-law, each word or expression which is italicized shall have the same meaning as the said word or expression has for the purposes of By-law No. 438-86, as amended.

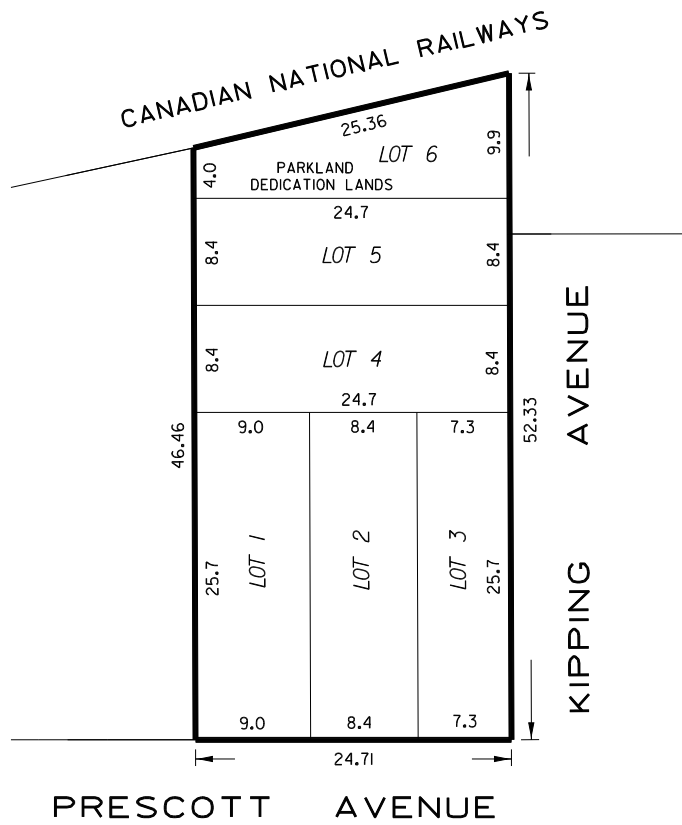
ENACTED AND PASSED this 4th day of February, A.D. 1999.

CASE OOTES,
Deputy Mayor

NOVINA WONG,
City Clerk

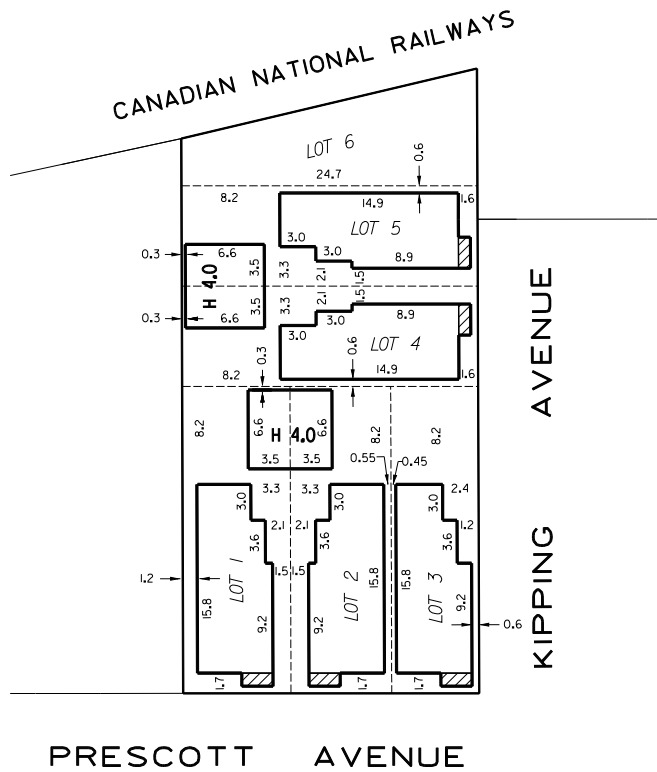
(Corporate Seal)

MAP 1



WORKS AND EMERGENCY SERVICES
SURVEY AND MAPPING SECTION
TORONTO NOVEMBER, 1998
BL2/69PRES1.DGN
FILE: P7-22
MAP No. 48K-312 DRAWN: D.R.

MAP 2



COVERED PORCH (2.6m x 1.2m)

H: DENOTES MAXIMUM HEIGHT IN METRE ABOVE GRADE

NOTE: EAVES MAY PROJECT 0.45 METRES FROM HEAVY LINE



WORKS AND EMERGENCY SERVICES
 SURVEY AND MAPPING SECTION
 TORONTO NOVEMBER, 1998
 BL2/69PRES2.DGN
 FILE: P7-22
 MAP No. 48K-312 DRAWN: D.R.