

Authority: Toronto Community Council Report No. 4, Clause No. 2,  
as adopted by City of Toronto Council on March 2, 3 and 4, 1999  
Enacted by Council: March 4, 1999

**CITY OF TORONTO**

**BY-LAW No. 90-1999**

**To amend Zoning By-law No. 438-86 of the former City of Toronto  
in respect of a part of No. 73 Queen's Park Crescent (East Branch).**

The Council of the City of Toronto HEREBY ENACTS as follows:

1. Section 12(2)310(a) of By-law No. 438-86, being "A By-law To regulate the use of land and the erection, use, bulk, height, spacing of and other matters relating to buildings and structures and to prohibit certain uses of lands and the erection and use of certain buildings and structures in various areas of the City of Toronto", as amended, is further amended by:

- (1) deleting "Map 29" and substituting the attached "Map 30";
- (2) adding the attached Map 29;
- (3) deleting from paragraphs (1)(a) and (1)(d)(i), the number "28" and substituting the number "29";
- (4) deleting from paragraph (2)(a) the number "29" and substituting the number "30";
- (5) deleting from paragraph (3) the number "28" and substituting "29" and adding "2," following "1,";
- (6) deleting from paragraph (4) the number "2," and deleting the number "14" and substituting "14A, 14B"; and
- (7) deleting from paragraph (4) the word and number "and 24" and substituting ", 24, 26 and 29".

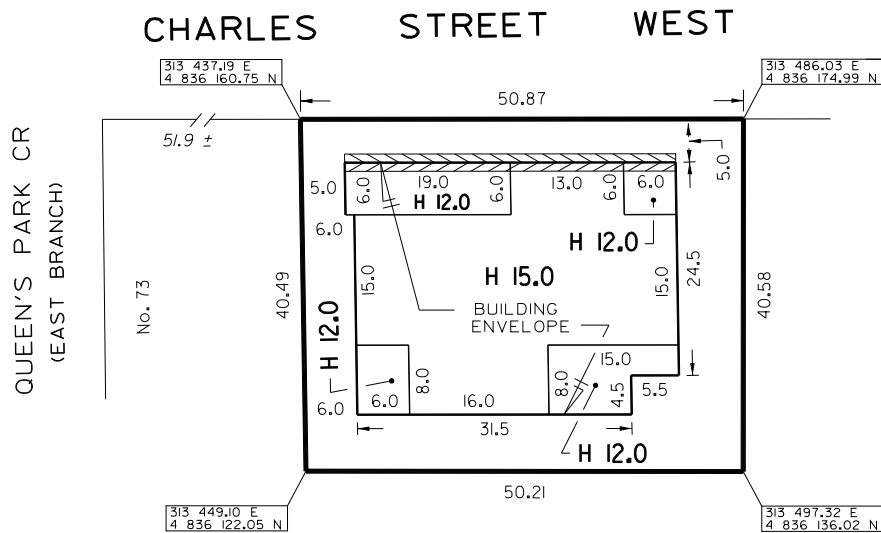
ENACTED AND PASSED this 4th day of March, A.D. 1999.


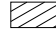

CASE OOTES,  
Deputy Mayor

NOVINA WONG,  
City Clerk

(Corporate Seal)

MAP 29

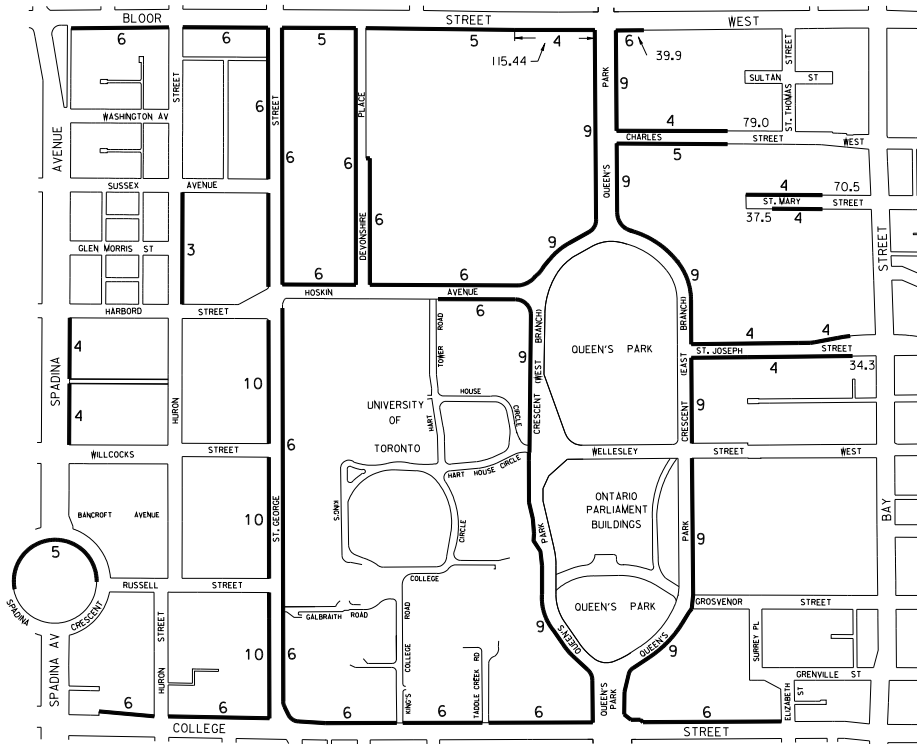


-  LANDS REFERRED TO IN SECTION 12(2)310(a)
-  BUILDING LINE REFERRED TO IN SECTION 12(2)310(a)(3)
-  1.0 METRE (MAXIMUM WIDTH) PROJECTION ZONE REFERRED TO IN SECTION 12(2)310(a)(4)

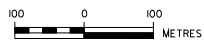


WORKS AND EMERGENCY SERVICES  
 SURVEY SERVICES SECTION  
 TORONTO FEBRUARY, 1999  
 SEC2/s310M29.DGN  
 FILES: 013-21, 2402.53  
 MAP No. 506-322 DRAWN:D.R.

MAP 30



— REQUIRED SETBACK LINES REFERRED TO IN SECTION 12(2)310(a)



CITY WORKS SERVICES  
 SURVEY SERVICES SECTION  
 TORONTO FEBRUARY, 1999  
 SEC2/S310M30.DGN  
 FILE: DRAWN: D.R.  
 MAP Nos. 50H-322, 50H-323