

Authority: Toronto Community Council Report No. 11, Clause No. 7,  
as adopted by City of Toronto Council on July 27, 28, 29 and 30, 1999  
Enacted by Council: July 29, 1999

## CITY OF TORONTO

### BY-LAW No. 462-1999

#### **To amend By-law Nos. 1995-0466, 1996-0243, 1996-0244, 1996-0245, 1996-0246 and 1996-0247 respecting the re-naming of Bremner Boulevard to Fort York Boulevard and the extension of Fort York Boulevard to Lake Shore Boulevard West.**

The Council of the City of Toronto HEREBY ENACTS as follows:

1. Bylaw No. 1995-0466, being “A By-law To amend the General Zoning By-law No. 438-86 with respect to lands generally bounded by Strachan Avenue, Lake Shore Boulevard West, the Frederick G. Gardiner Expressway and Canadian National Railways, also known as the Bathurst/Strachan Area”, is amended by deleting the “*Bathurst/Strachan Area*” Map and Maps 1, 2 and 3, and replacing them with the maps in Appendix A attached hereto.

2. By-law No. 1996-0243, being “A By-law To amend By-law No. 438-86, the General Zoning By-law, as amended, and By-law No. 1995-0466, with respect to the portion of 640 Fleet Street (known as the Molson Lands), being block 1A”, is amended by deleting Plans 1, 2, 3 and 4 and replacing them with the maps in Appendix B attached hereto.

3. By-law No. 1996-0244, being “A By-law To amend By-law No. 438-86, the General Zoning By-law, as amended, and By-law No. 1995-0466, with respect to the portion of 640 Fleet Street (known as the Molson Lands), being block 2A”, is amended by deleting Plans 1, 2, 3 and 4 and replacing them with the maps in Appendix C attached hereto.

4. By-law No. 1996-0245, being “A By-law To amend By-law No. 438-86, the General Zoning By-law, as amended, and By-law No. 1995-0466, with respect to the portions of 640 Fleet Street (known as the Molson Lands), being blocks 3A and 5 and the proposed parks and streets”, is amended by:

- (1) deleting Plans 1, 2 and 3 and replacing them with the maps in Appendix D attached hereto; and
- (2) deleting the words “Bremner Boulevard” where they appear in Sections 6(10) and 6(18) and replacing them with the words “Fort York Boulevard”.

5. By-law No. 1996-0246, being “A By-law To amend By-law No. 438-86, the General Zoning By-law, as amended, and By-law No. 1995-0466, with respect to the portion of 640 Fleet Street (known as the Molson Lands), being block 7”, is amended by deleting Plans 1 and 2 and replacing them with the maps in Appendix E attached hereto.

**6.** By-law No. 1996-0247, being “A By-law To amend By-law No. 438-86, the General Zoning By-law, as amended, with respect to 660 Fleet Street”, is amended by deleting Maps 1 and 2 and replacing them with the maps in Appendix F attached hereto.

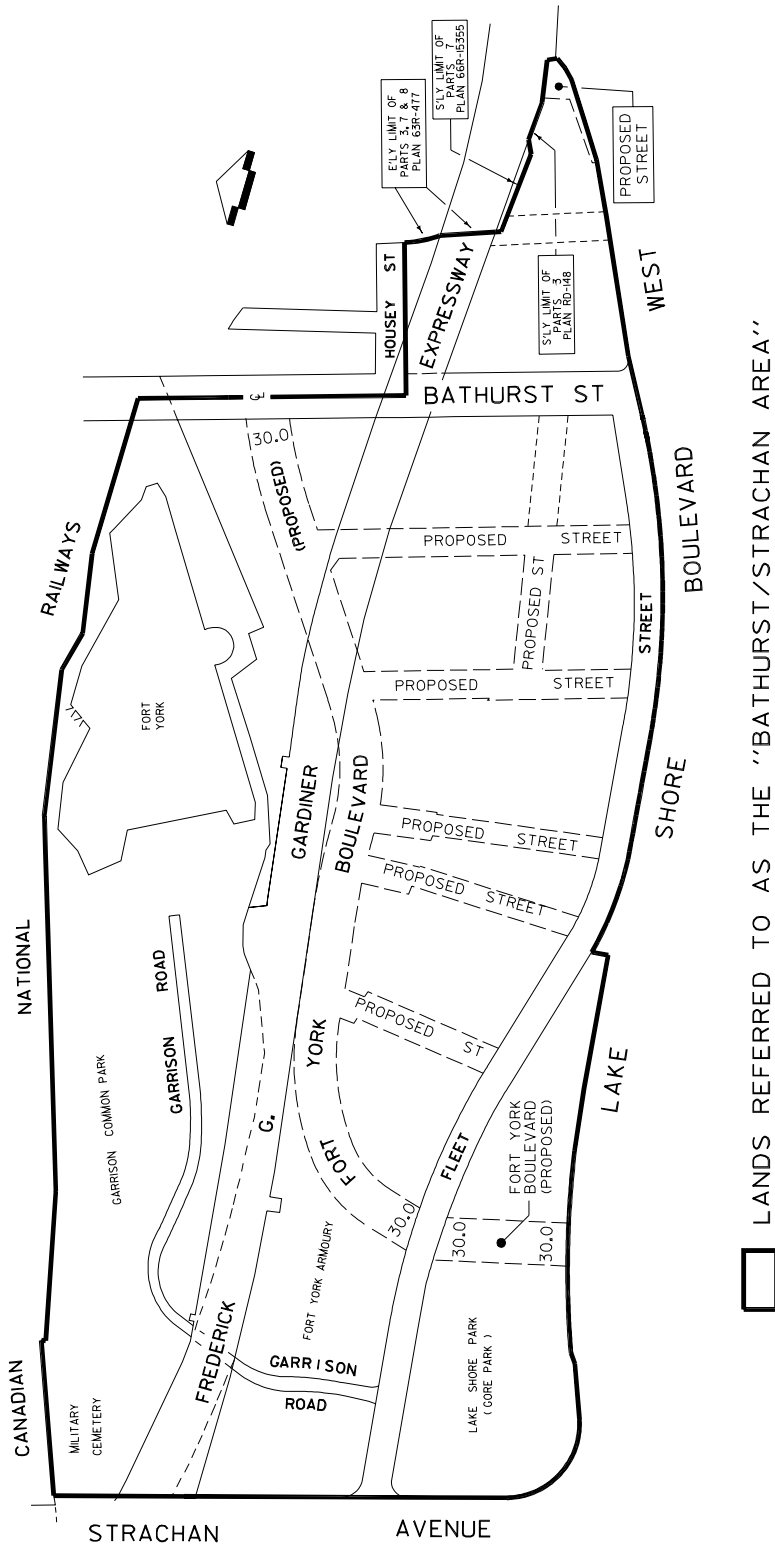
ENACTED AND PASSED this 29th day of July, A.D. 1999.

CASE OOTES,  
Deputy Mayor

NOVINA WONG,  
City Clerk

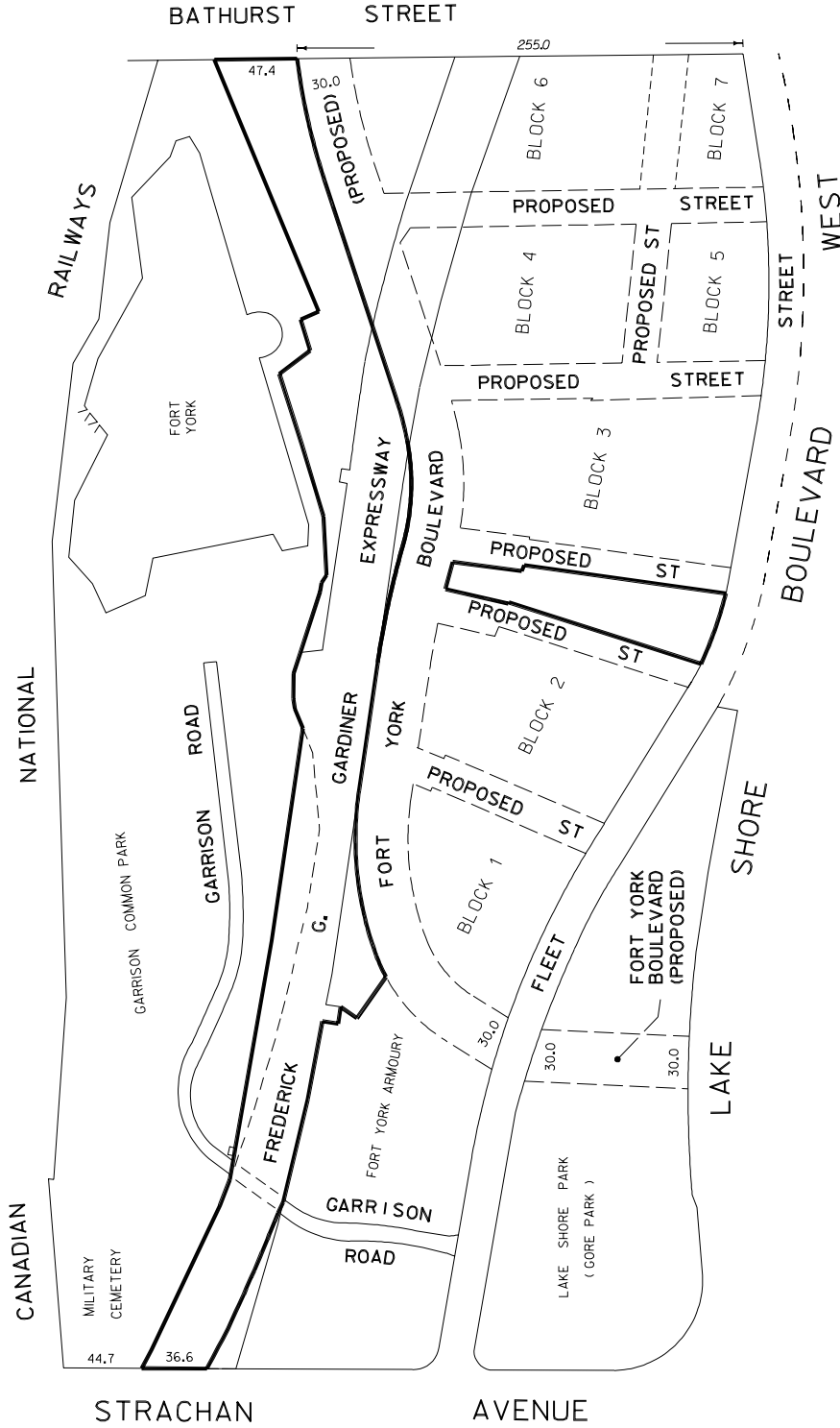
(Corporate Seal)

APPENDIX A



WORKS AND EMERGENCY SERVICES  
 SURVEY AND MAPPING SERVICES  
 SECTION 2/S21B52.DGN JULY, 1999  
 FILE: 2402.76  
 MAP Nos. 49C-313, 323,  
 500-311 & 321 DRAWING: W.L.

APPENDIX A  
MAP I



LANDS REDESIGNATED FROM  
IC D3 N1.5 AND IC D4 N1.5 TO G



WORKS AND EMERGENCY SERVICES  
SURVEY AND MAPPING SERVICES  
TORONTO JULY, 1999  
BL2/BSM1A.DGN DRAWN: W.L.  
FILE: 2402.76  
MAP Nos. 496-313, 323,  
500-311 & 321

MAP 2

APPENDIX A

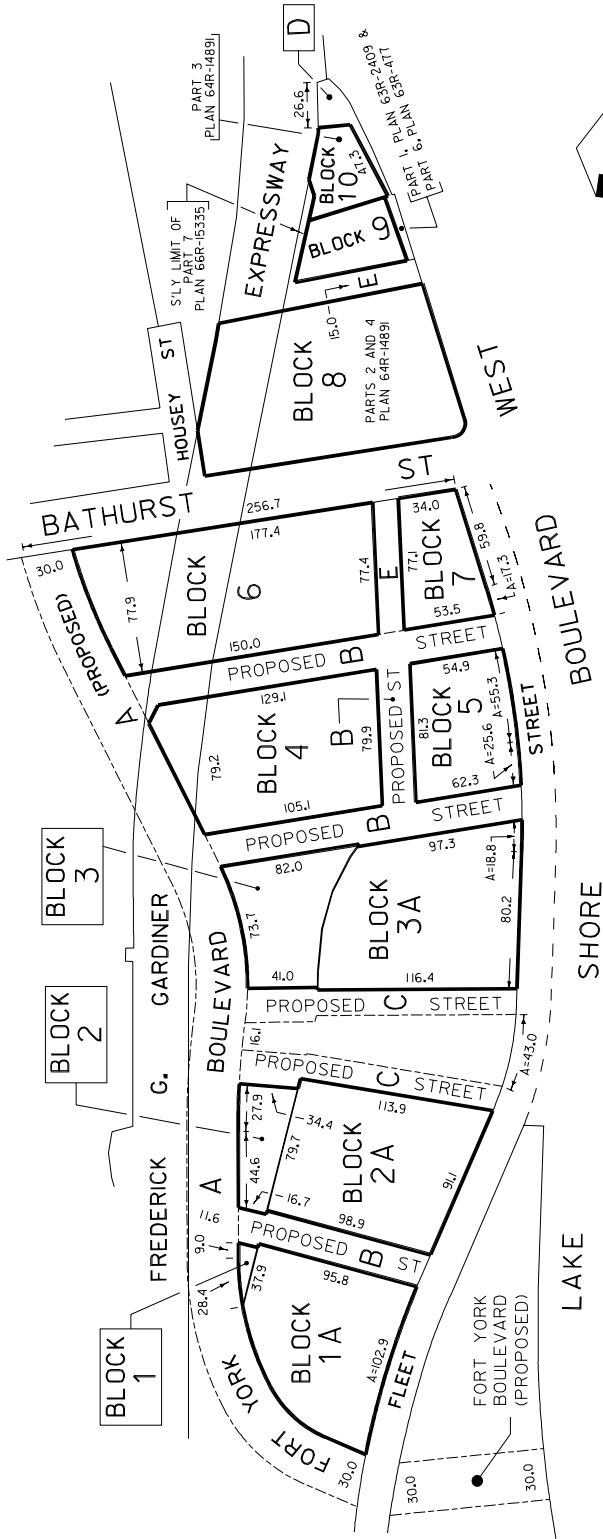


WORKS AND EMERGENCY SERVICES  
 SURVEY AND MAPPING SERVICES  
 TORONTO  
 BL2/B5M2A.DGN JULY, 1999  
 FILE: 2402.76 DRAWN: W.L.  
 199-493-313, 323,  
 506-311 & 321



MAP 3

APPENDIX A



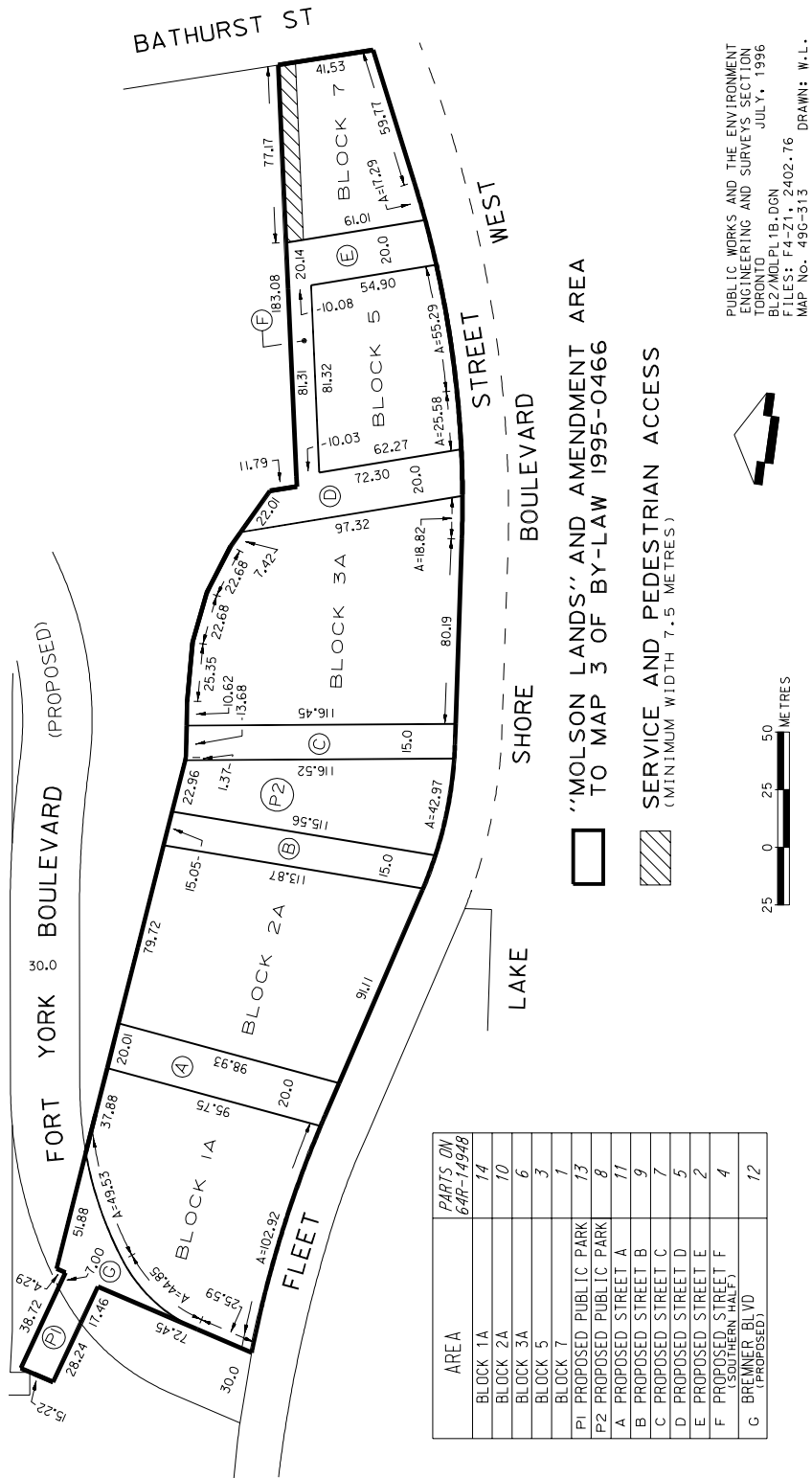
BLOCK BOUNDARIES

- A FORT YORK BOULEVARD (PROPOSED) - 30 METRE WIDTH
- B PROPOSED STREETS - 20 METRE WIDTH
- C PROPOSED STREETS - 15 METRE WIDTH MINIMUM
- D PORTLAND STREET EXTENSION (PROPOSED)  
PART 58, PLAN 64R-14891
- E SERVICE and PEDESTRIAN ACCESS - 15 METRE WIDTH  
(ACCESS AT BATHURST STREET WILL BE LIMITED TO PEDESTRIANS)

AREA	PARTS ON
BLOCK 1A	1649-1649B
BLOCK 2A	1649-1649B
BLOCK 3A	1649-1649B
BLOCK 5	1649-1649B
BLOCK 7	1649-1649B

WORKS AND EMERGENCY SERVICES  
SURVEY AND MAPPING SERVICES  
TORONTO, ONTARIO JULY 1999  
BL2/BSMBA-DGN DRAWN: W.L.  
FILES: F4-Z1, 2402.76  
MAP Nos. 490-313, 323,  
500-311 & 321

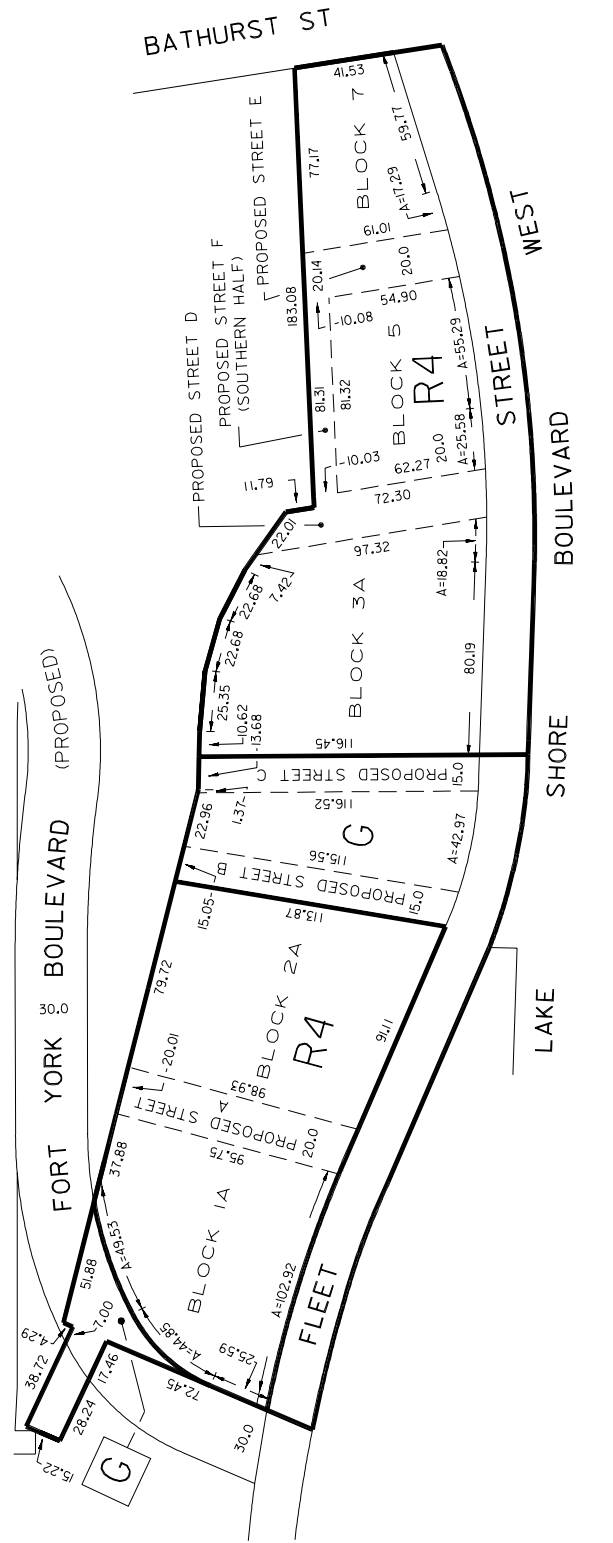
APPENDIX B  
PLAN I



PUBLIC WORKS AND THE ENVIRONMENT  
ENGINEERING AND SURVEYS SECTION  
TORONTO  
BL2/MOLPL1B.DGN  
FILES: F4-Z1, 2402.76  
MAP NO. 496-313  
DRAWN: W.L.

APPENDIX B  
ZONING AMENDMENT MAP

PLAN 2



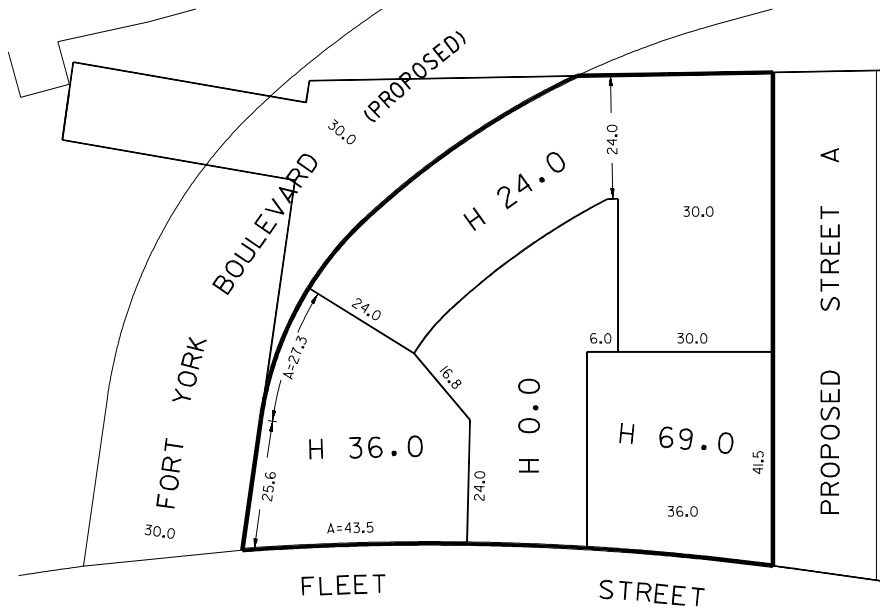
WORKS AND EMERGENCY SERVICES  
SURVEY AND MAPPING SERVICES  
TORONTO  
BL2/MOL/PL2B.DGN  
FILES: F4-71, 2402.76  
MAP No. 49C-313 DRAWN: W.L.



APPENDIX B

HEIGHT MAP

PLAN 3



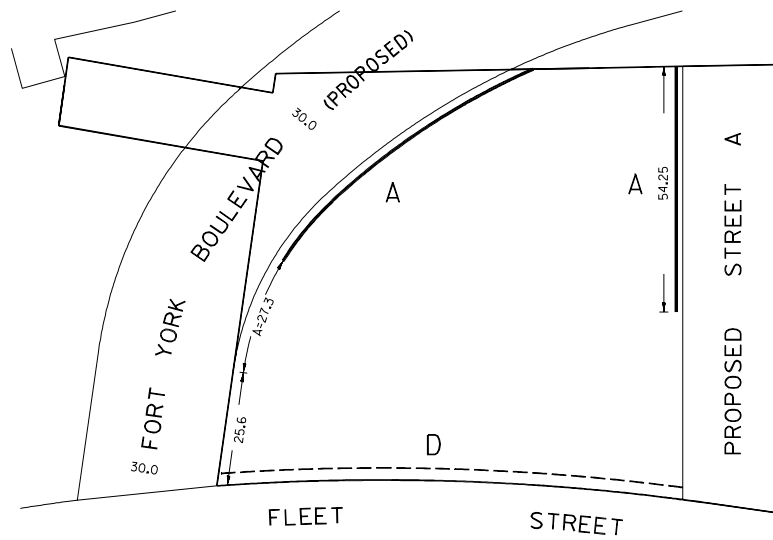
H: DENOTES MAXIMUM HEIGHT IN METRES ABOVE GRADE

□ BLOCK IA AS SHOWN ON PLAN 1



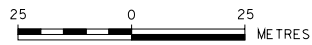
WORKS AND EMERGENCY SERVICES  
 SURVEY AND MAPPING SERVICES  
 TORONTO JULY, 1999  
 BL2/MOLPL3B.DGN  
 FILES: F4-21, 2402.76  
 MAP No. 496-313 DRAWN: W.L.

APPENDIX B  
SETBACKS MAP PLAN 4



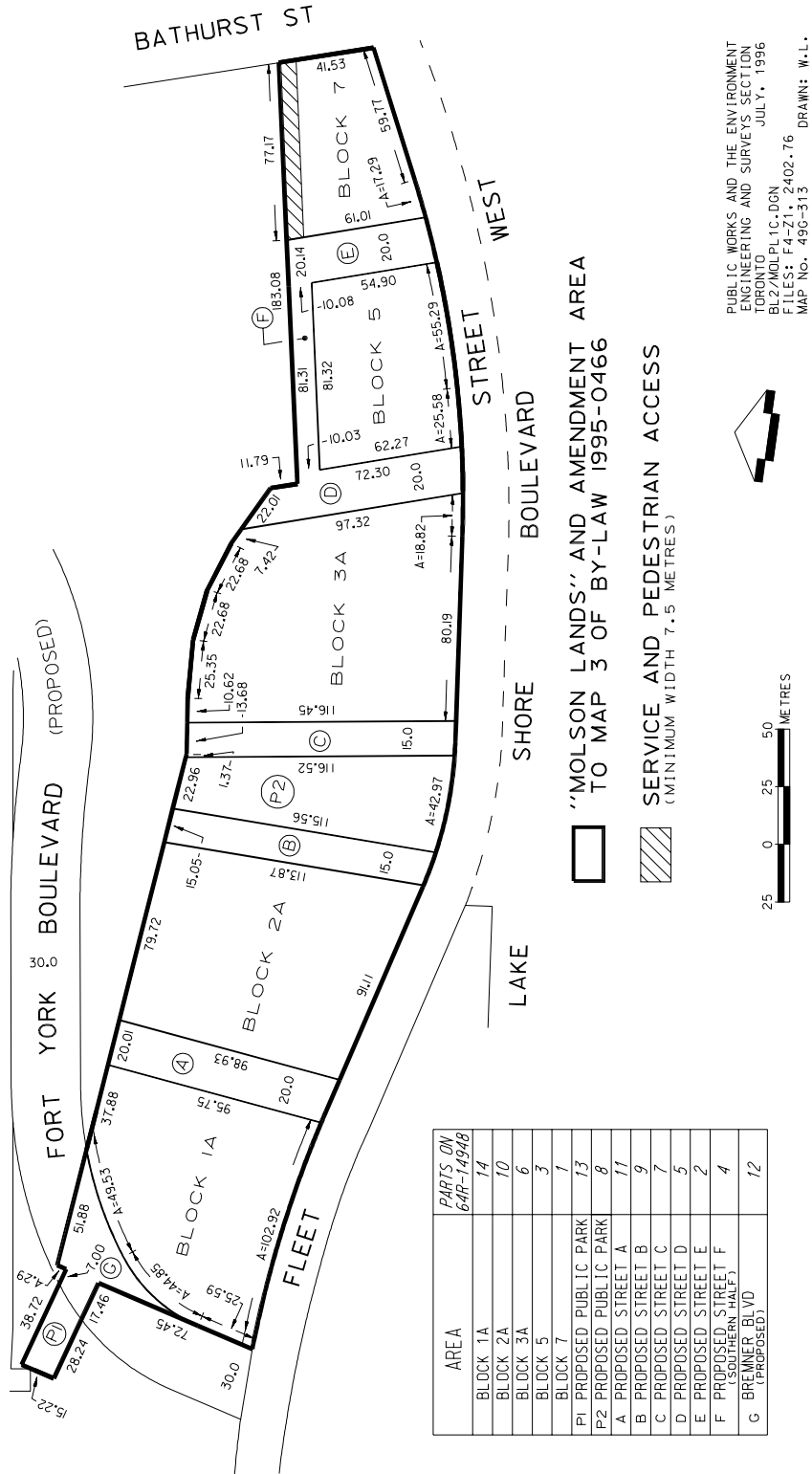
SETBACKS REFERRED TO IN SECTION 5(4)

- A ——— 2.0 METRE SETBACK LINE WITH PROJECTIONS PERMITTED
- D - - - - 4.0 METRE SETBACK LINE WITH PROJECTIONS PERMITTED ABOVE 12.0 METERS ABOVE GRADE



WORKS AND EMERGENCY SERVICES  
SURVEY AND MAPPING SERVICES  
TORONTO JULY, 1999  
BL2/MOLPL4B.DGN  
FILE: F4-Z1  
MAP No. 49G-313 DRAWN: W.L.

APPENDIX C  
 PLAN I

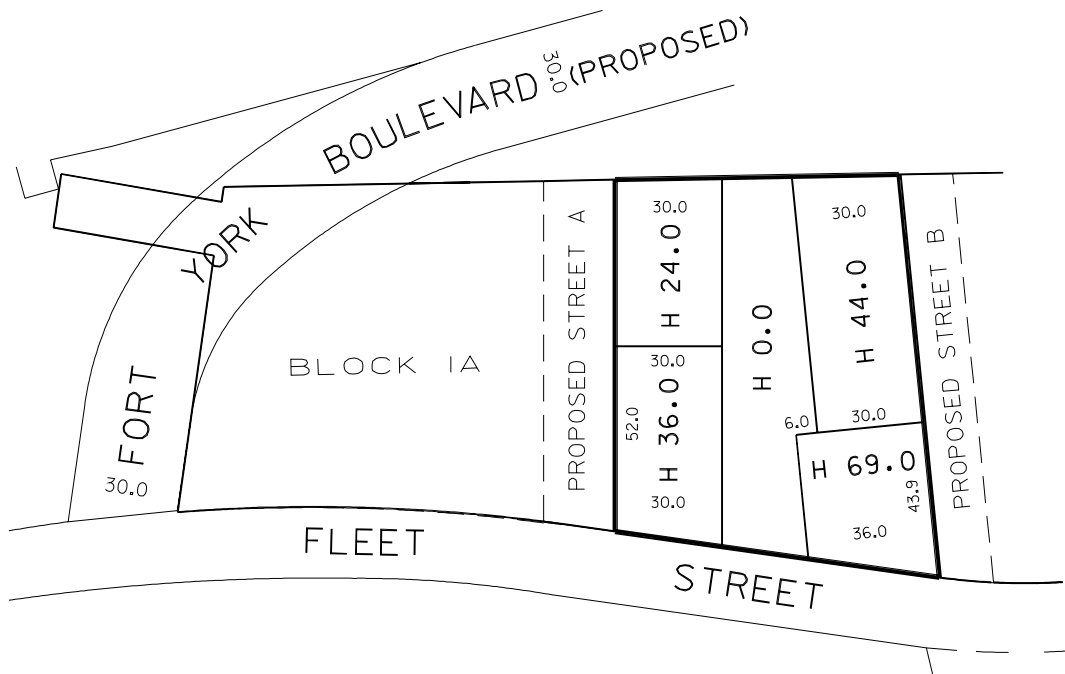


PUBLIC WORKS AND THE ENVIRONMENT  
 ENGINEERING AND SURVEYS SECTION  
 TORONTO  
 BL2/MOLPL1C+DGN  
 FILES: F4-Z1, 2402.76  
 MAP NO. 490-313  
 DRAWN: W.L.



APPENDIX C  
HEIGHT MAP

PLAN 3



H: DENOTES MAXIMUM HEIGHT IN METRES ABOVE GRADE

 BLOCK 2A AS SHOWN ON PLAN 1

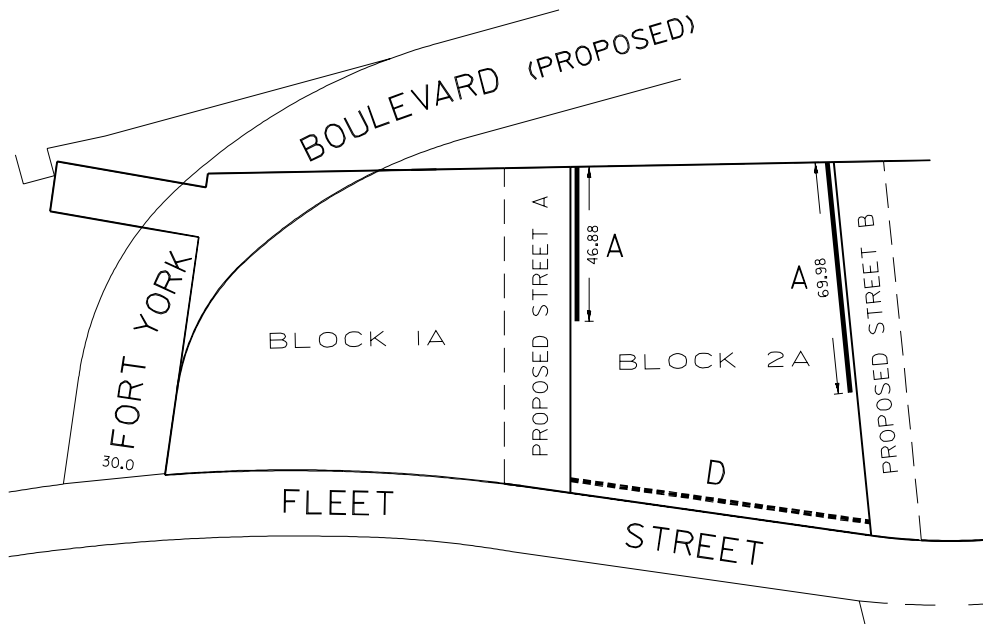


WORKS AND EMERGENCY SERVICES  
SURVEY AND MAPPING SERVICES  
TORONTO JULY, 1999  
BL2/MOLPL3C.DGN  
FILES: F4-Z1, 2402.76  
MAP No. 496-313 DRAWN: W.L.

APPENDIX C

SETBACKS MAP

PLAN 4



SETBACKS REFERRED TO IN SECTION 5(4)

- A ——— 2.0 METRE SETBACK LINE WITH PROJECTIONS PERMITTED
- D - - - - - 4.0 METRE SETBACK LINE WITH PROJECTIONS PERMITTED ABOVE 12.0 METRES ABOVE GRADE



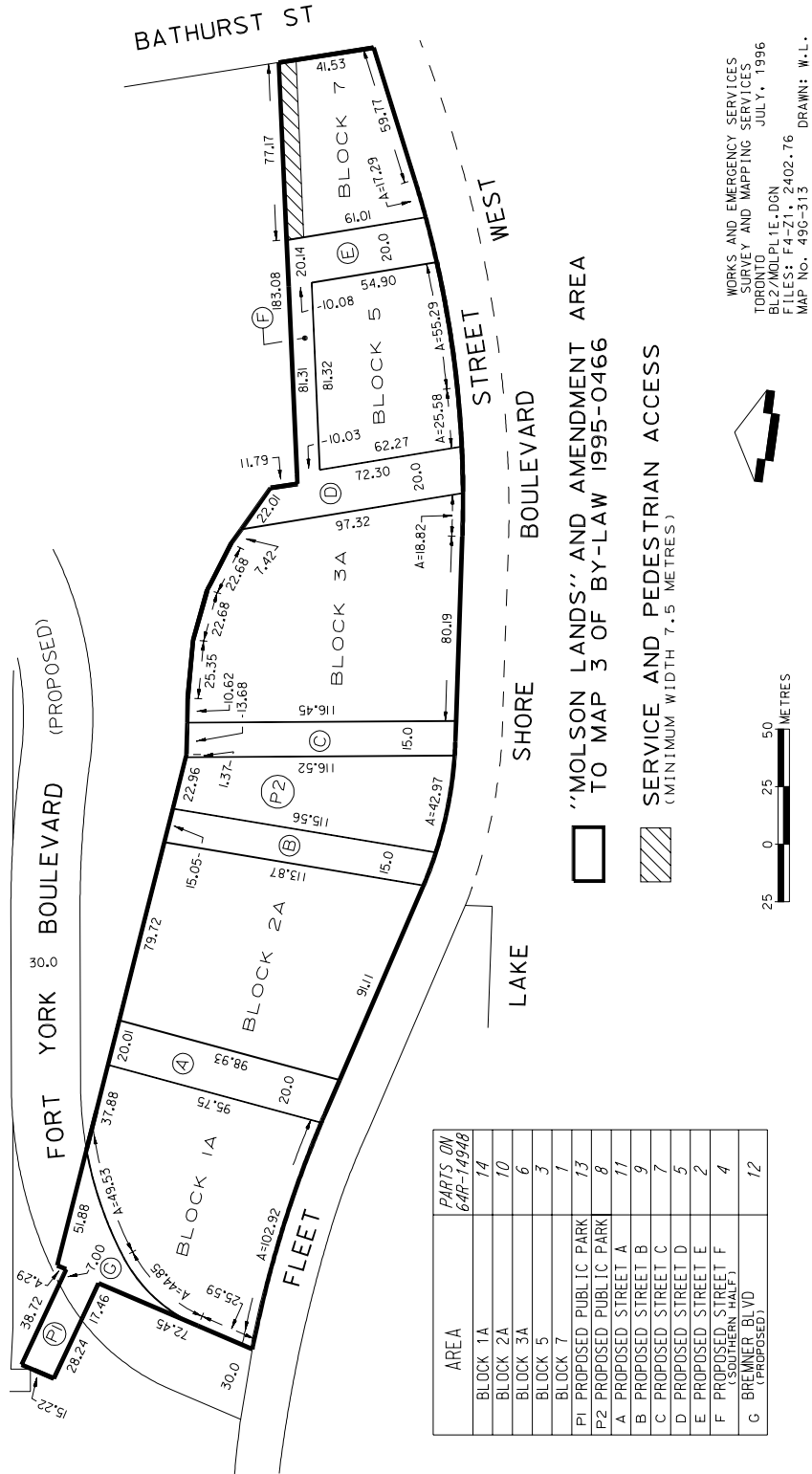
WORKS AND EMERGENCY SERVICES  
SURVEY AND MAPPING SERVICES  
TORONTO JULY, 1999  
BL2/MOLPL4C.DGN  
FILES: F4-21, 2402.76  
MAP No. 49G-313 DRAWN: W.L.





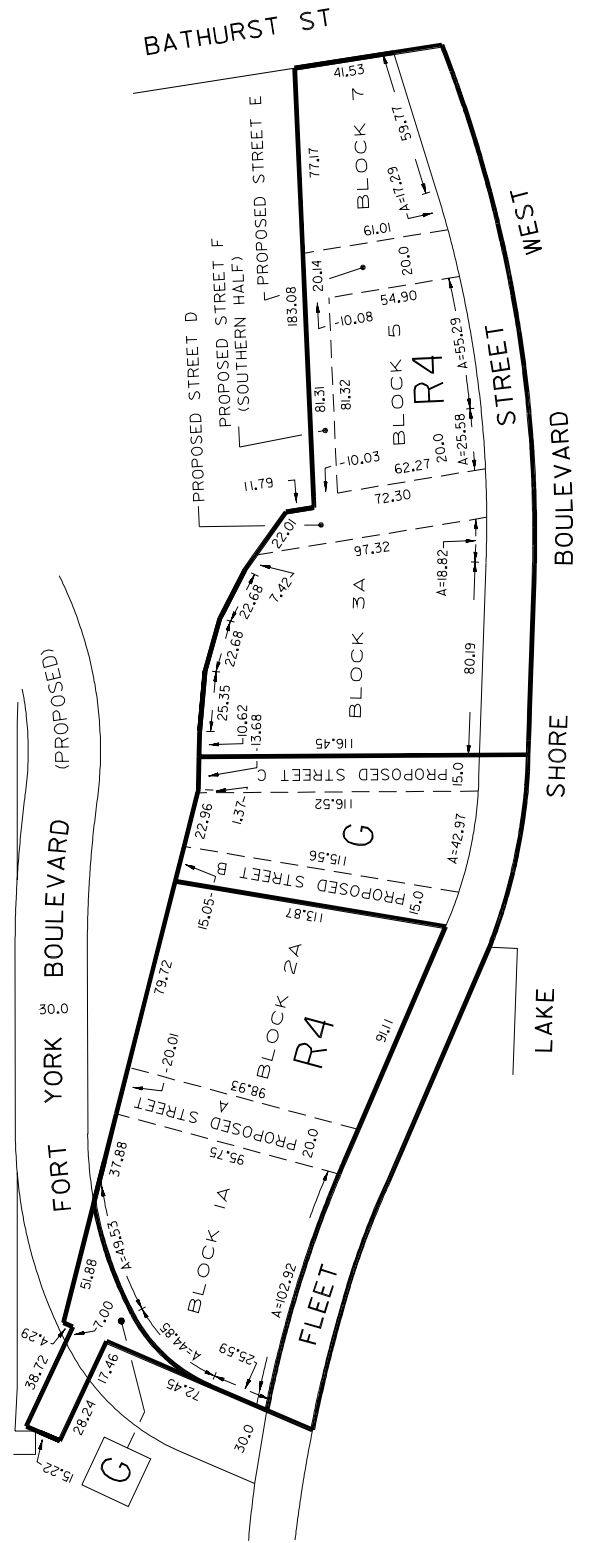


APPENDIX E  
PLAN I

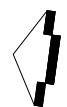


APPENDIX E  
 ZONING AMENDMENT MAP

PLAN 2

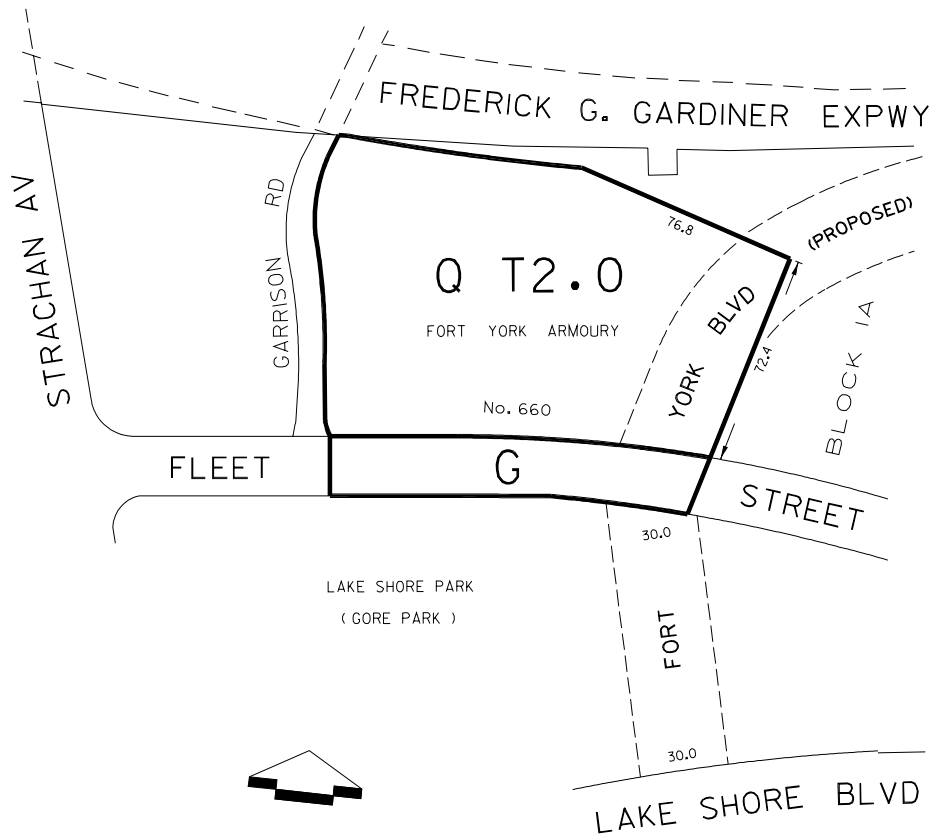


WORKS AND EMERGENCY SERVICES  
 SURVEY AND MAPPING SERVICES  
 TORONTO  
 BL2/MOL/PL2E.DGN  
 FILES: F4-Z1, 2402.76  
 MAP No. 49C-313 DRAWN: W.L.



APPENDIX F  
ZONING AMENDMENT MAP

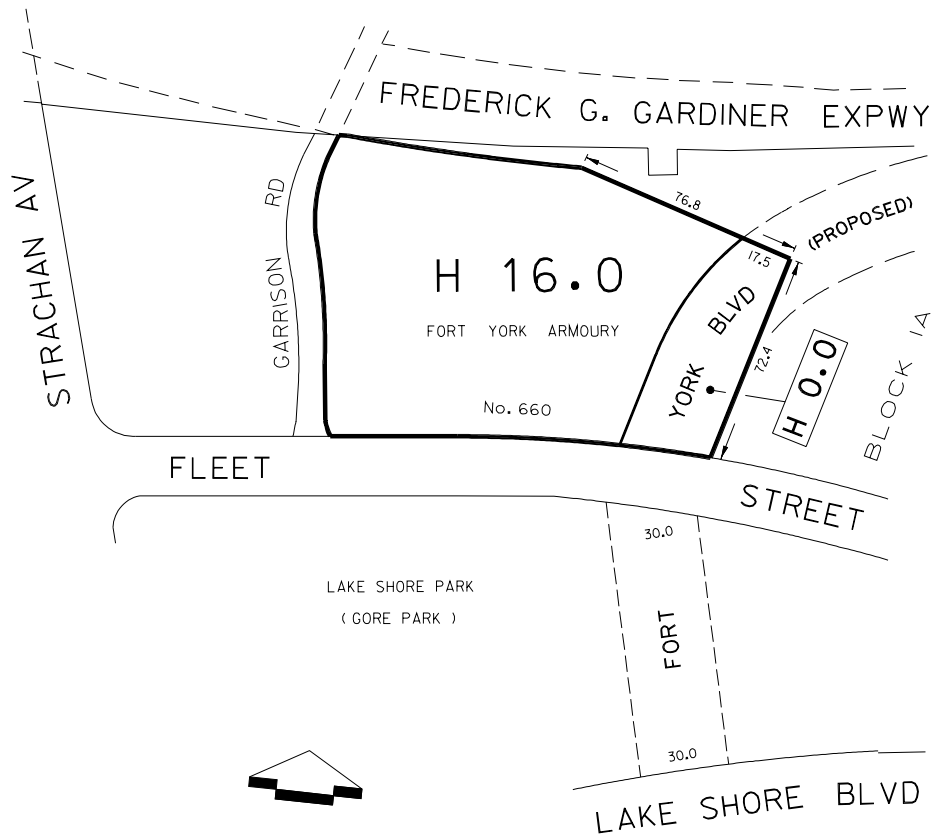
MAP I



WORKS AND EMERGENCY SERVICES  
SURVEY AND MAPPING SERVICES  
TORONTO JULY, 1999  
BL2/MOL6601F.DGN  
FILES: F4-Z1, 2402.76  
MAP No. 49G-313 DRAWN: W.L.

APPENDIX F  
HEIGHT MAP

MAP 2



WORKS AND EMERGENCY SERVICES  
SURVEY AND MAPPING SERVICES  
TORONTO JULY, 1999  
BL2/MOL6601H.DGN  
FILES: F4-Z1, 2402.76  
MAP No. 49G-313 DRAWN: W.L.