

Authority: North York Community Council Report No. 3, Clause No. 27,
as adopted by City of Toronto Council on April 11, 12 and 13, 2000
Enacted by Council: April 13, 2000

CITY OF TORONTO

BY-LAW No. 214-2000

**To amend City of North York By-law No. 7625 in respect of lands municipally
known as 162 Finch Avenue East.**

WHEREAS authority is given to Council by Section 34 of the Planning Act, R.S.O. 1990, c.P. 13, as amended, to pass this by-law; and whereas Council of the City of Toronto has provided adequate information to the public and has held at least one public meeting in accordance with the Planning Act;

The Council of the City of Toronto HEREBY ENACTS as follows:

1. Schedules "B" and "C" of By-law No. 7625 are amended in accordance with Schedule 1 of this by-law.

2. Section 64.17 of By-law No. 7625 is amended by adding the following:

64.17(26) RM2(26)

EXCEPTION REGULATIONS

(a) The requirements of Section 64.17(19) of By-law No. 7625, as amended (RM2(19)) shall apply.

(b) Notwithstanding (a) and (c) of Section 64.17(19) of By-law No. 7625, as amended, the following shall apply:

(i) The maximum gross floor area shall be 582m².

(ii) The minimum lot area shall be 517m².

3. By-law No. 751-1999 is hereby repealed.

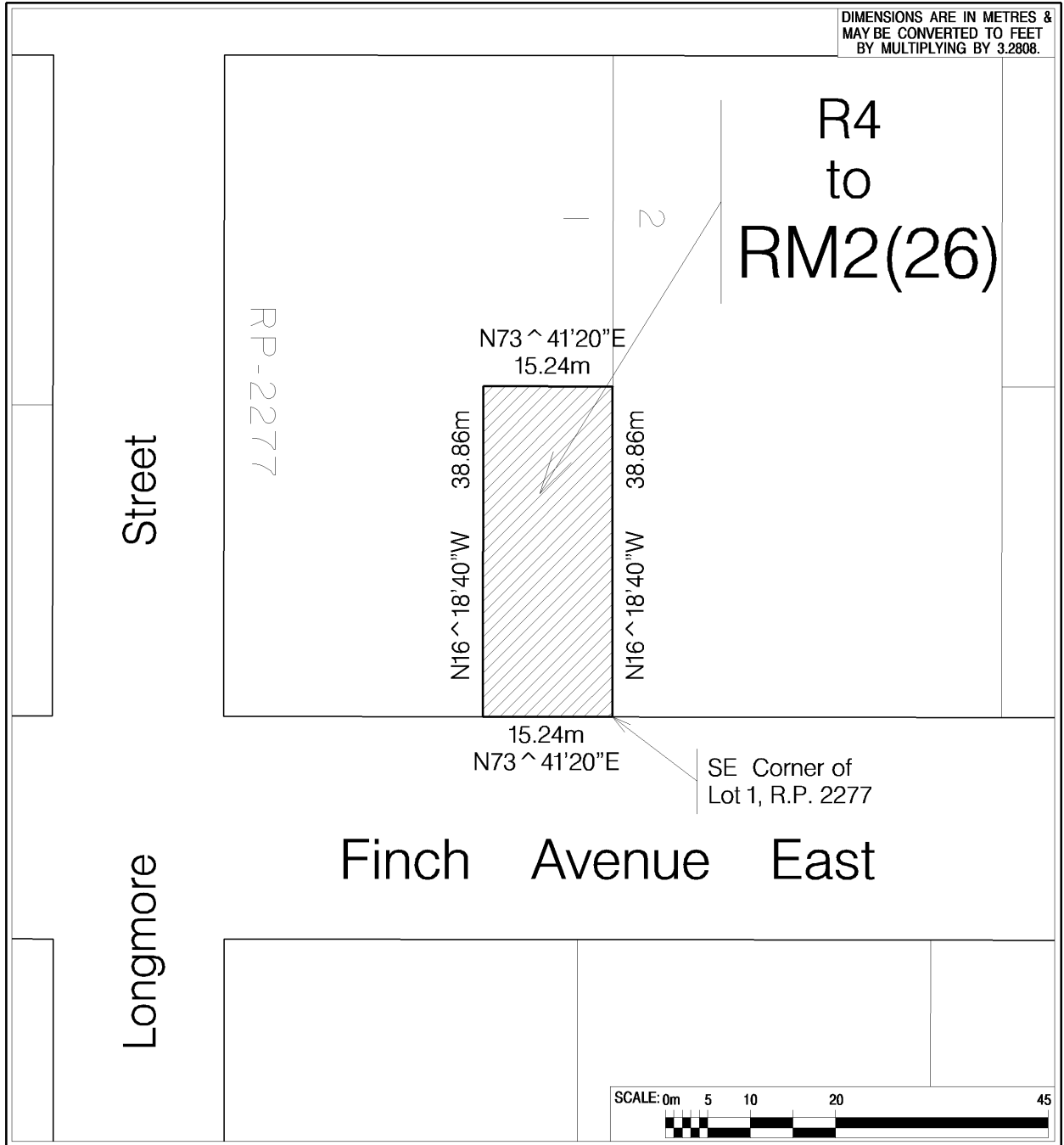
ENACTED AND PASSED this 13th day of April, A.D. 2000.

CASE OOTES,
Deputy Mayor

NOVINA WONG,
City Clerk

(Corporate Seal)

SCHEDULE "1"



DIMENSIONS ARE IN METRES & MAY BE CONVERTED TO FEET BY MULTIPLYING BY 3.2808.

R4 to RM2(26)

RP-2277

Street

Longmore

Finch Avenue East



| | | | | | |
|--|--------------------------|--------------------------|-----------------------------|--|--|
| | | | | <p>TORONTO City Planning Division North District</p> | |
| | | | | <p>SUBJECT PROPERTY</p> | |
| Location: 162 Finch Avenue East - Part of Lot 1, R.P. 2277 | | | | | |
| File No. UZ-98-26 | Prepared by: A.K. | Approved by: M.S. | Date: March 22, 2000 | Filename: SBL2962 | |
| <small>Source: Zoning, By-Law, Lot Line, Street Line and Street Name Data - City of Toronto Urban Development Services Street lines represent street dedications/road allowances and do not represent actual as-built curb lines of streets.</small> | | | | | |