

Authority: Notice of Motion J(53), Moved by Councillor McConnell, seconded by  
Councillor Ootes, as adopted by Council on October 3, 4 and 5, 2000  
Enacted by Council: October 4, 2000

**CITY OF TORONTO**

**BY-LAW No. 627-2000**

**To effect interim control on certain lands within the central waterfront and  
surrounding areas of the City of Toronto.**

WHEREAS Council, at its meeting of October 3, 4 and 5, 2000 adopted by way of motion the Report of the Commissioner of Urban Development Services recommending that an interim control by-law be passed in respect of certain lands within the central waterfront and surrounding areas of the City of Toronto, which lands are the subject of a review or study of land use planning policies; and

WHEREAS Section 38 of the *Planning Act* permits the council of a municipality to pass an interim control by-law where the Council has directed that a review or study be undertaken in respect of land use planning policies within the municipality or in any defined area or areas thereof.

The Council of the City of Toronto HEREBY ENACTS as follows:

**1.** No person shall use any land, building or structure or use any addition to any building or structure for any purpose on the lands shown within the heavy lines on the attached Maps 1 to 4, inclusive, save and except for a tent, marquee or other temporary structure erected for the purpose of special event programming.

**2.** This By-law shall be in effect for a period of one year from the 4th day of October, 2000.

ENACTED AND PASSED this 4th day of October, A.D. 2000.

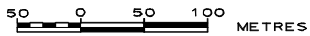
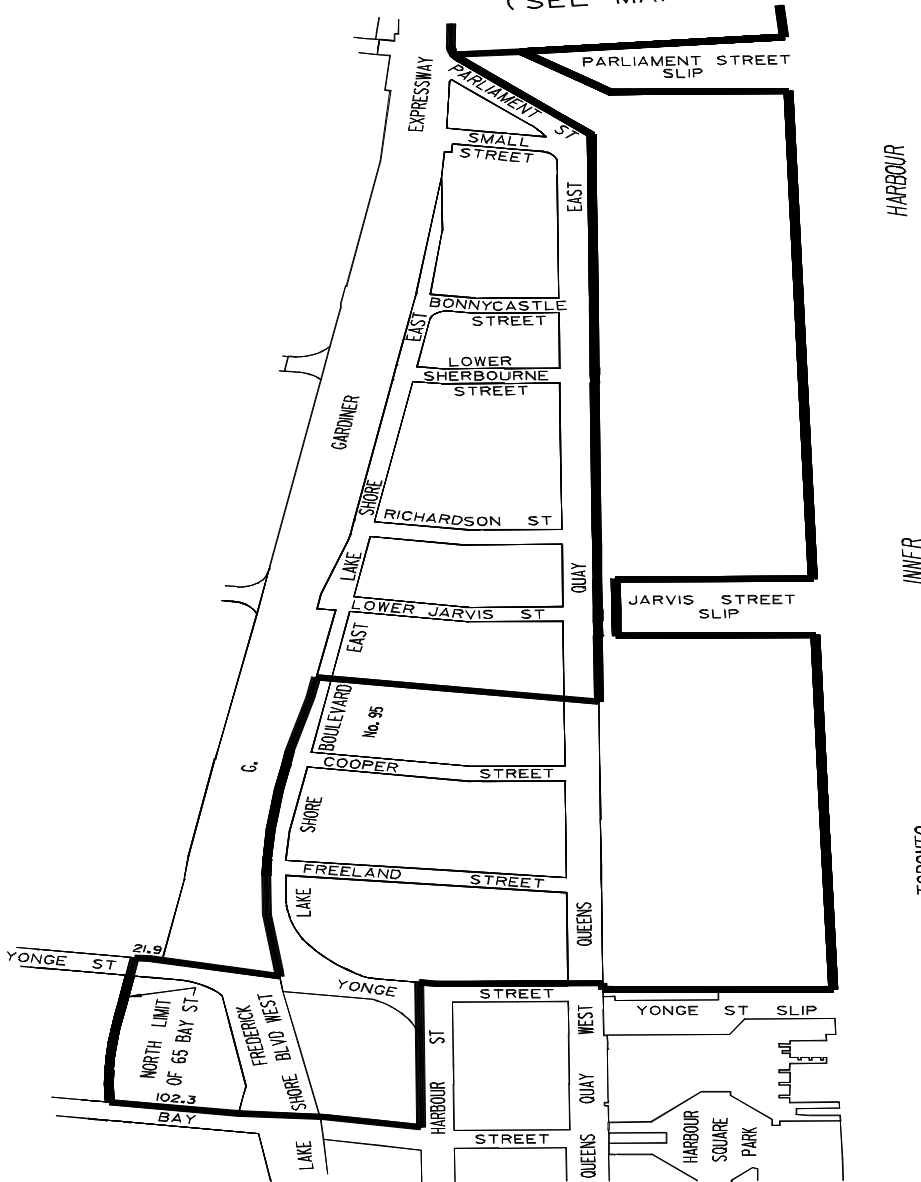
CASE OOTES,  
Deputy Mayor

NOVINA WONG,  
City Clerk

(Corporate Seal)

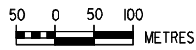
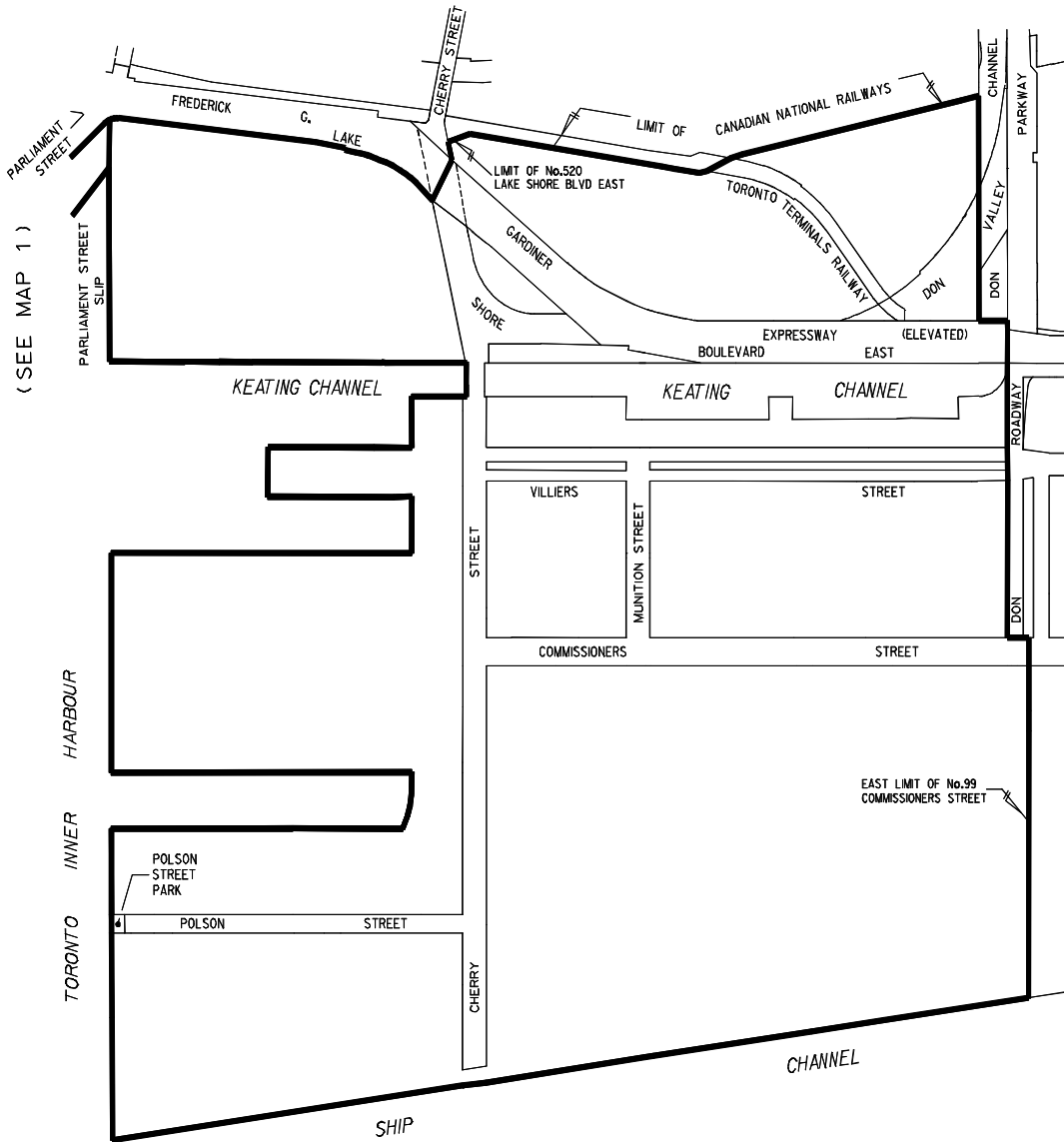
# MAP 1 of 4

(SEE MAP 2)



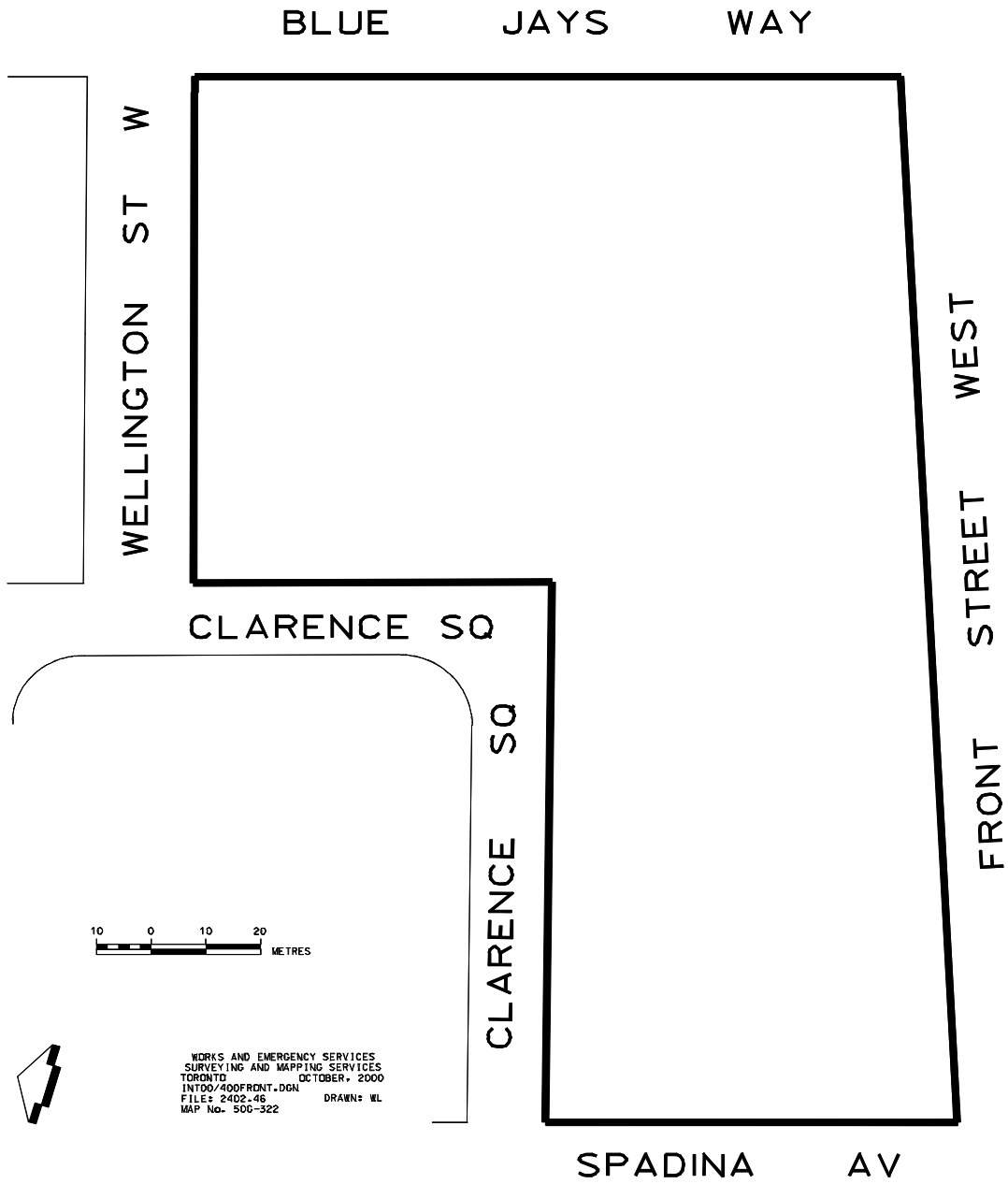
WORKS AND EMERGENCY SERVICES  
 SURVEY AND MAPPING SERVICES  
 TORONTO  
 INT00/INTSQU1.DGN OCTOBER, 2000  
 FILE # 2402.46  
 MAP Nos. 50G-313. DRAWN: D.R.  
 50G-323. 51G-311. 312.

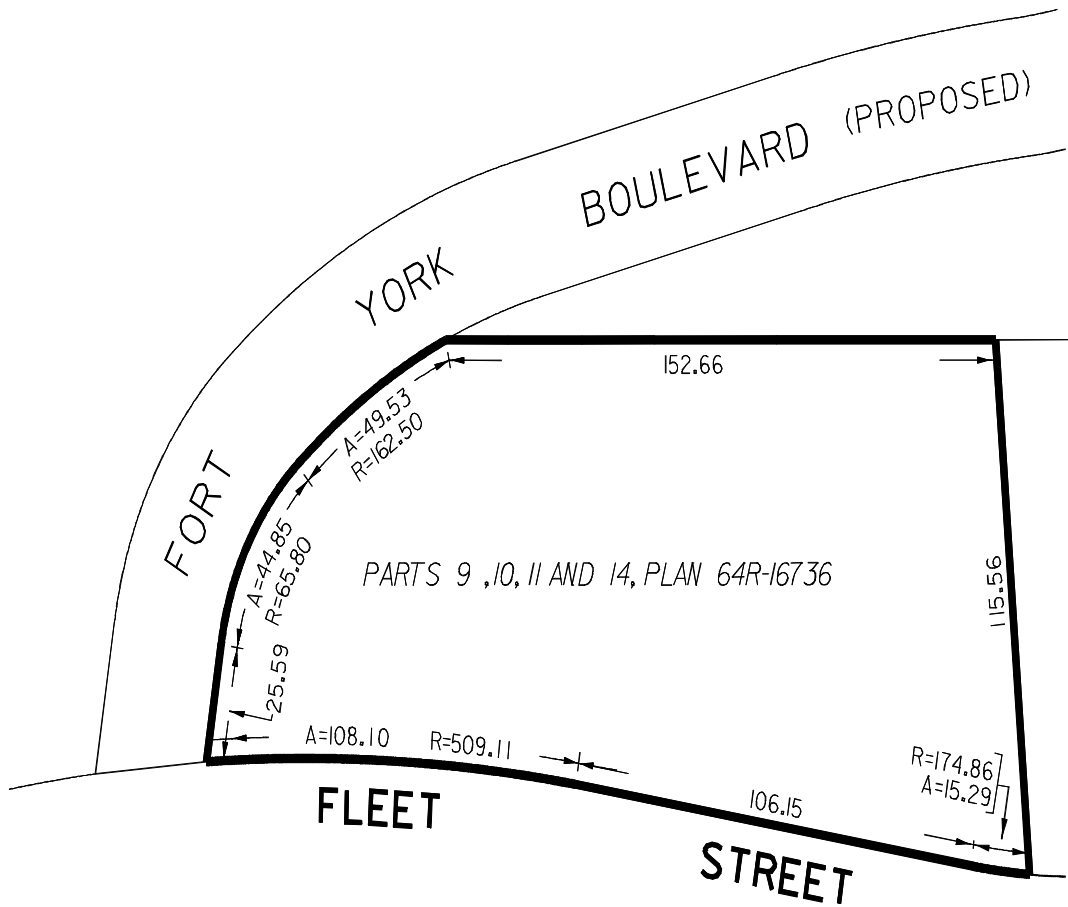
MAP 2 of 4



WORKS AND EMERGENCY SERVICES  
SURVEY AND MAPPING SERVICES  
TORONTO OCTOBER, 2000  
INT00/INTSOU2.DGN  
FILE: 2402.46 DRAWN: PG  
MAP Nos. 51G-313, 323  
52G-311, 321

MAP 3 of 4





WORKS AND EMERGENCY SERVICES  
SURVEY AND MAPPING SERVICES  
TORONTO OCTOBER, 2000  
INT00/640FLEET.DGN  
FILE: 2402.46  
MAP No. 49G-313 DRAWN: WL