

Authority: Toronto Community Council Report No. 16, Clause No. 3,
as adopted by City of Toronto Council on October 3, 4 and 5, 2000
Enacted by Council: October 5, 2000

CITY OF TORONTO

BY-LAW No. 891-2000

**To amend Zoning By-law No. 438-86, as amended, of the former City of Toronto
with respect to lands known as 600 Melita Crescent.**

The Council of the City of Toronto HEREBY ENACTS as follows:

1. None of the provisions of sections 2(2), 2(3), 2(4), 2(5), 2(6) and 4(h) of By-law No. 105-78, being “A By-law to amend By-law 20623 respecting certain lands bounded on the west by Shaw Street, on the east by Christie Street, on the north by Melita Avenue and the rear lot line of certain properties on the south side of Marchmount Road and on the south by the C.P.R. and Ontario Hydro lands”, as amended, shall apply to prevent the addition of 84 *dwelling units* and 4 apartments, with uses *accessory* thereto on the lands outlined by heavy lines on Map 1 attached to and forming part of this by-law provided:

- (1) the *residential gross floor area* of the building does not exceed 29,086 square metres;
- (2) the *height* of the building does not exceed 29.655 metres above *grade*, but this paragraph does not prevent the erection and use of structures permitted under section 4(2)(a)(i) and (ii) of By-law No. 438-86;
- (3) not less than 43 *parking spaces* are provided and maintained on the *lot*;
- (4) not less than 1 *loading space - Type G* is provided and maintained on the *lot*;
- (5) the *landscaped open space* is not less than 25%; and
- (6) no part of the building or structure above *grade* shall extend beyond the area designated for that building or structure outlined by heavy lines on Map 2, attached to and forming part of this by-law, but this paragraph does not prevent the erection and use of a trellis located on the property line on the Christie Street frontage.

2. For the purpose of this By-law:

- (a) *grade* means 125.48 metres Canadian Geodetic Datum; and

- (b) each other word or expression which is italicized shall have the same meaning as each such word or expression as defined in By-law No. 438-86, being “A By-law to regulate the use of land and the erection, use, bulk, height, spacing of and other matters relating to buildings and structures and to prohibit certain uses of lands and the erection and use of certain buildings and structures in various areas of the City of Toronto”, as amended.

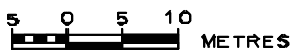
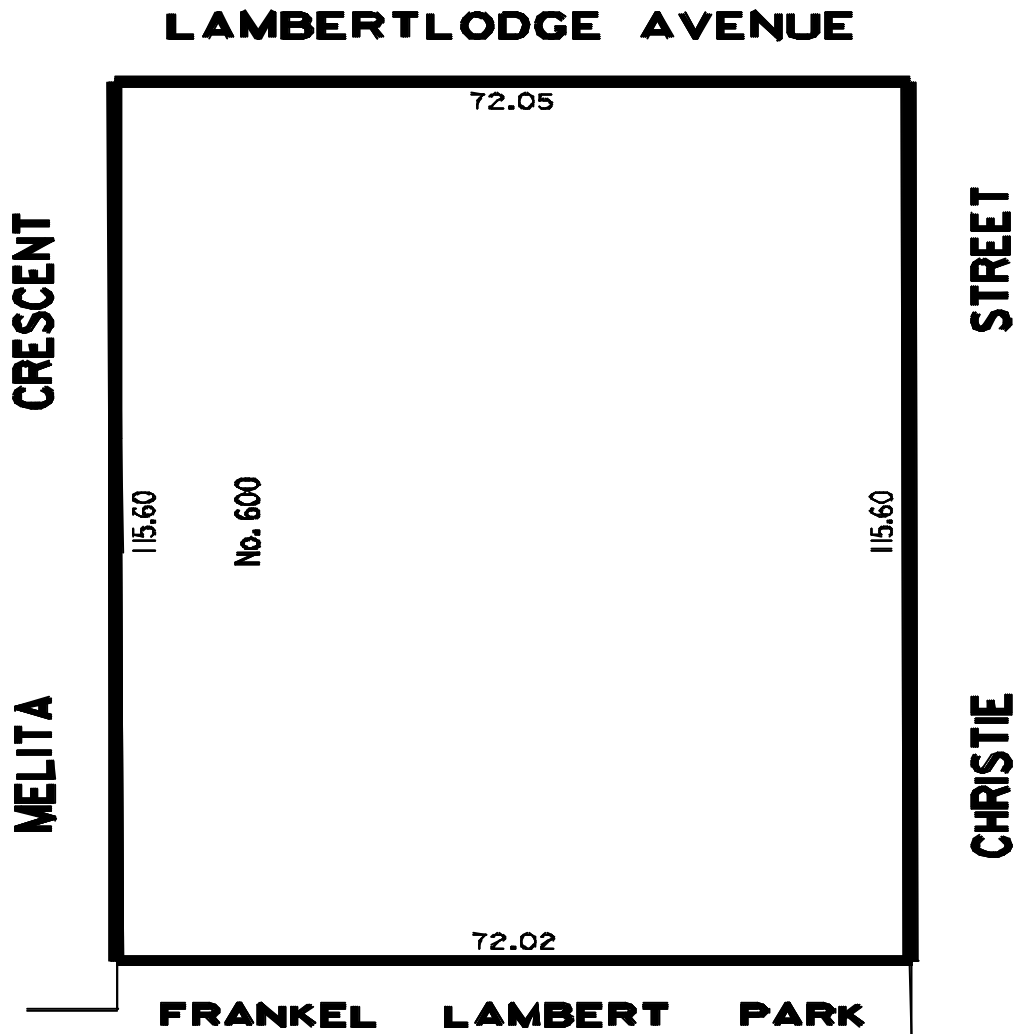
ENACTED AND PASSED this 5th day of October, A.D. 2000.

CASE OOTES,
Deputy Mayor

NOVINA WONG,
City Clerk

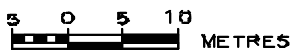
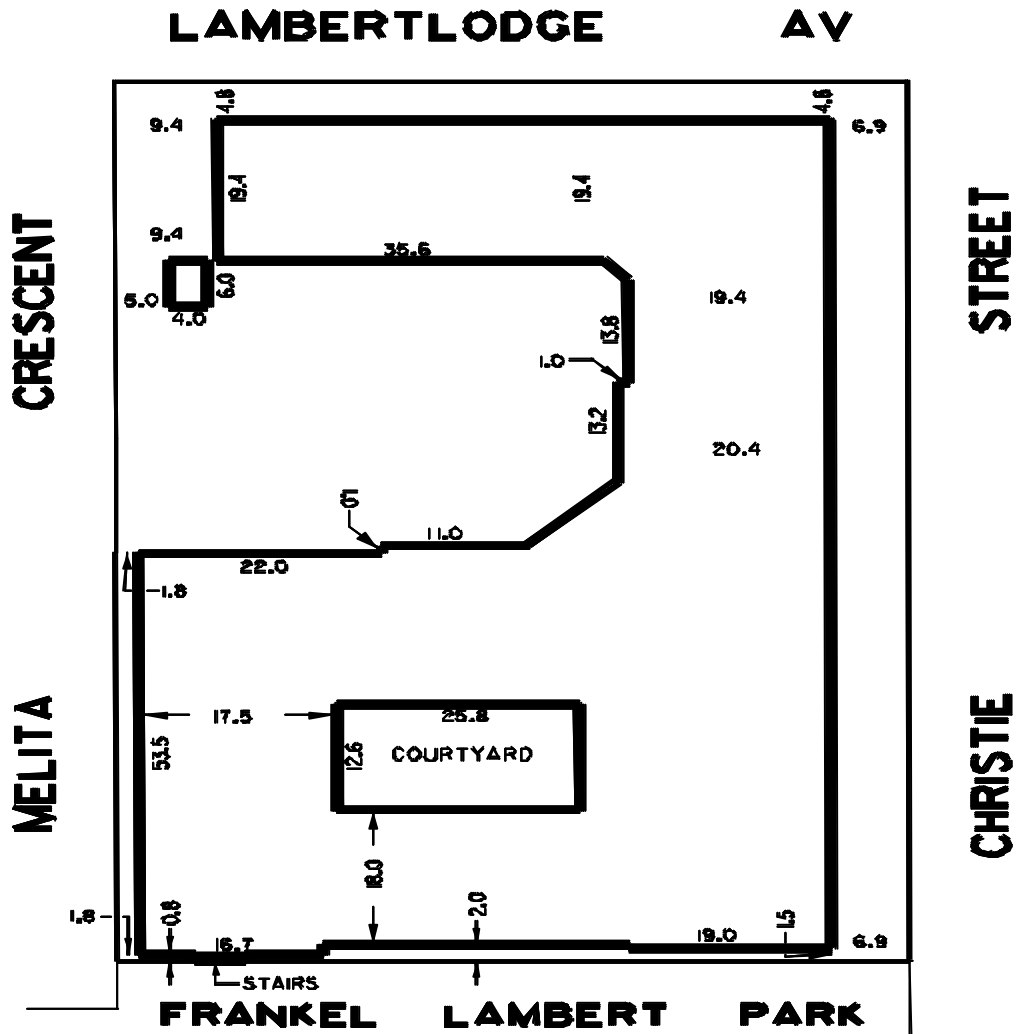
(Corporate Seal)

MAP 1



WORKS AND EMERGENCY SERVICES
SURVEYING AND MAPPING SERVICES
TORONTO SEPTEMBER, 2000
BLOO/BOOMEL11-DGN
FILE: M135-Z1
MAP No. 49J-322 DRAWN: WL

MAP 2



WORKS AND EMERGENCY SERVICES
 SURVEYING AND MAPPING SERVICES
 TORONTO SEPTEMBER, 2000
 BLOO/600MEL12-DGN
 FILE: M135-Z1
 MAP No. 49J-322 DRAWN: WL