

Authority: Downtown Community Council Report No. 3, Clause No. 6, adopted as amended,
by City of Toronto Council on April 23, 24, 25, 26, 27, 30 and May 1 and 2, 2001
Enacted by Council: April 27, 2001

CITY OF TORONTO

BY-LAW No. 315-2001

**To amend the former City of Toronto Municipal Code Chapter 297, Signs respecting
No. 640 Fleet Street.**

The Council of the City of Toronto HEREBY ENACTS as follows:

1. Section 297-12 of Chapter 297, Signs, of the Municipal Code of the former City of Toronto is amended by adding the following subsection:

X. Sections 297-10, 297-11 and 297-12 shall not apply to prohibit the erection or display of signs hereinafter described and shown in Schedule B, Maps 2, 3 and 4 at the end of this chapter, on a structure on lands known in the year 2000 as 640 Fleet Street, and shown outlined by heavy lines on Map 1 if the signs, in their entirety, comply with the following conditions:

(1) For the purposes of this exception, the following term has the meaning indicated:

GROSS SURFACE DISPLAY AREA (G.S.D.A.) - The total area which may be made available on the structure for the purpose of displaying signs as shown on Maps 2, 3 and 4.

(2) Three illuminated vinyl fascia sign areas for the purposes of third-party advertising are permitted to be erected or displayed on the structure on the lands known in the year 2000 as 640 Fleet Street, as shown on Map 1, provided:

(a) The dimensions, projections and gross surface display area of each respective sign area and as referenced to Maps 2, 3 and 4 are as follows:

Location	Height (m)	Width (m)	G.S.D.A (m ²)
East Elevation	19.81	13.72	271.79
North Elevation	19.81	30.48	603.80
West Elevation	19.81	31.70	627.98

- (b) No sign resembles an official traffic signal, traffic sign or other traffic regulating device.
- (c) No sign obstructs or otherwise interferes with an official traffic signal, traffic sign or other traffic regulating device or the safe movement of traffic.
- (d) Sign copy will be maintained at all times.
- (e) All signs permitted by this by-law shall be removed at the owner's expense, prior to the occupancy of any residential unit on the lands known in the year 2000 as 620-650 Fleet Street, or after a period of five years from the date of the adoption of this by-law, whichever shall first occur.

2. Schedule B of Chapter 297 is amended as follows:

- A. By inserting in the list of maps, in numerical order by section number, the following:

Area referred to in § 297-12X (Maps 1, 2, 3 and 4)

- B. By inserting in numerical order by section number, the maps at the end of this by-law.

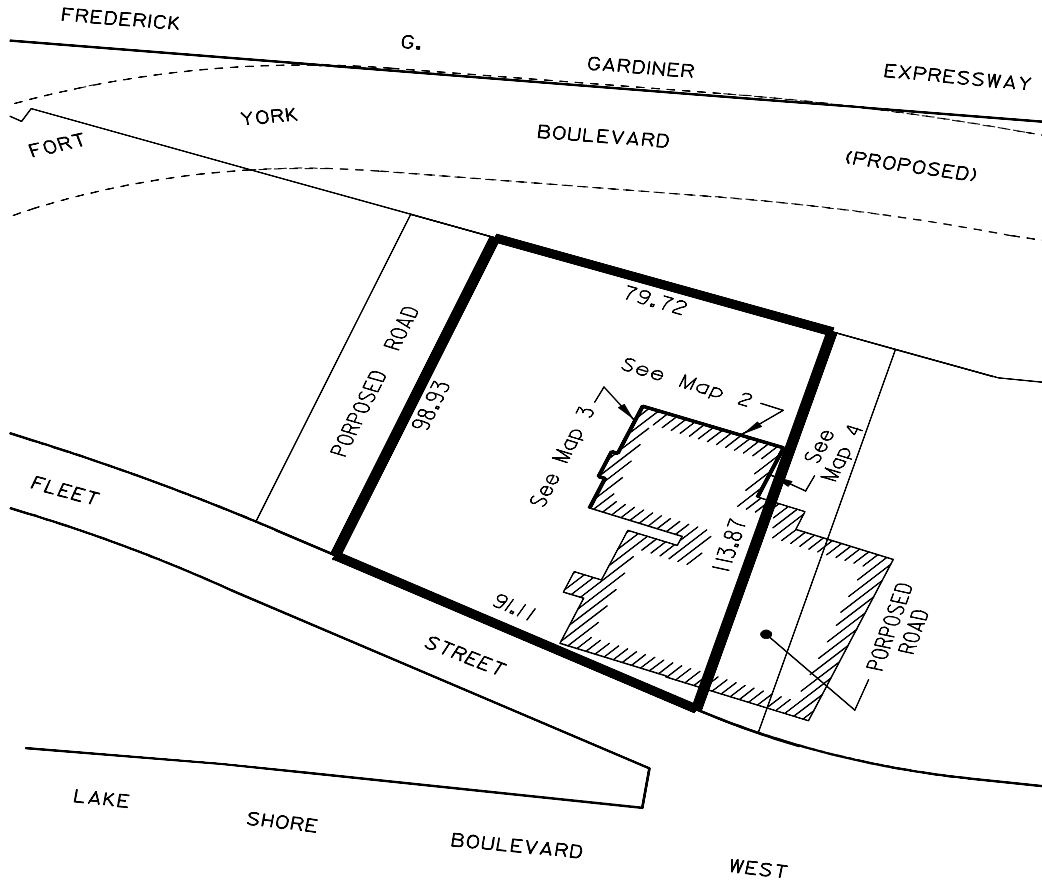
ENACTED AND PASSED this 27th day of April, A.D. 2001.

CASE OOTES,
Deputy Mayor

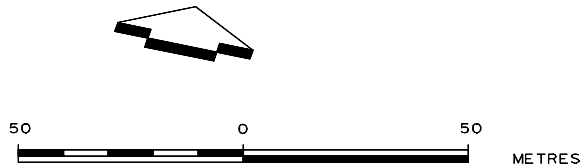
NOVINA WONG,
City Clerk

(Corporate Seal)

CHAPTER 297
§ 297-12X
MAP 1 of 4

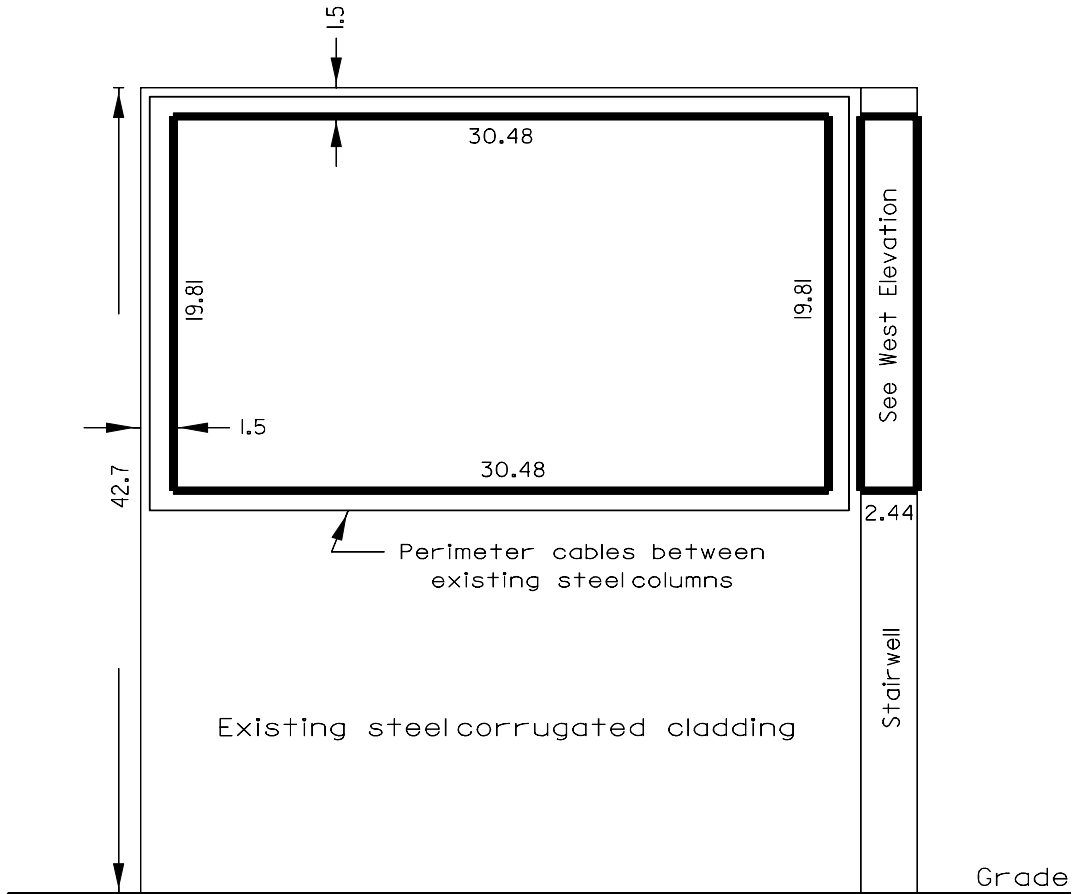


 PART 10, PLAN 64R-16736
(No. 640 Fleet Street)



WORKS AND EMERGENCY SERVICES
SURVEY AND MAPPING SERVICES
TORONTO APRIL, 2001
SIGN01/640FLEE1.DGN
FILE: 2402.67
MAP No. 49G-313 DRAWN: WL

CHAPTER 297
§ 297-12X
MAP 2 of 4



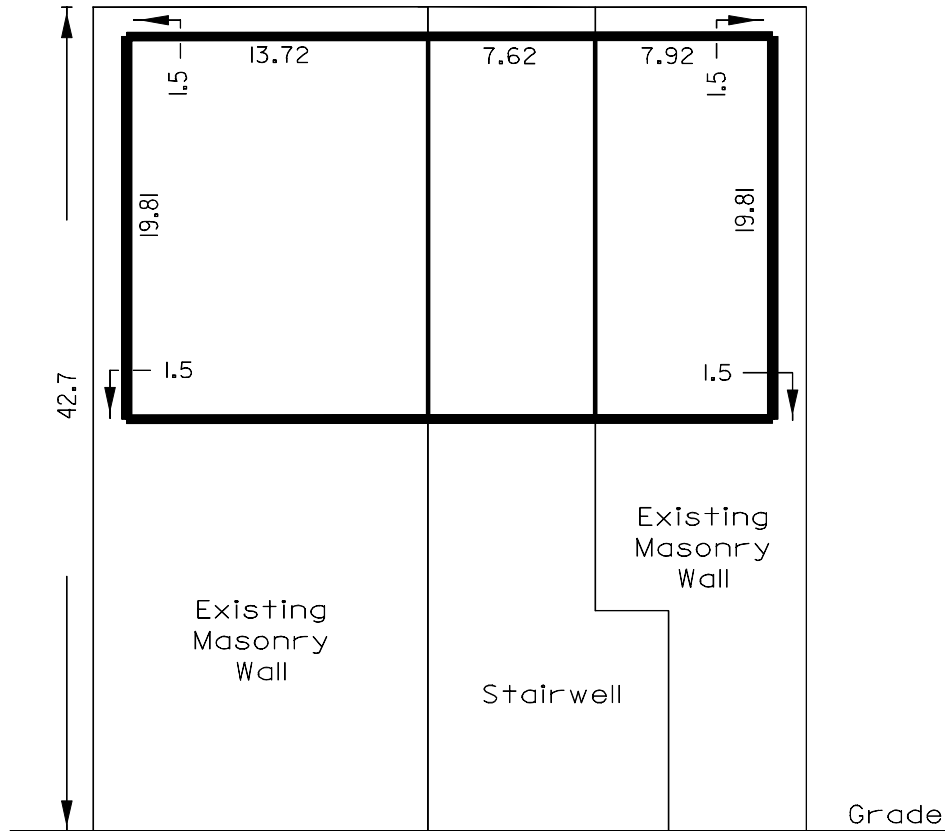
640 FLEET STREET
NORTH ELEVATION

 SIGN AREA



WORKS AND EMERGENCY SERVICES
SURVEY AND MAPPING SERVICES
TORONTO APRIL, 2001
SIGN2/640FLEE2.DGN
FILE: 2402.67
MAP No. 49G-113 DRAWN: WL

CHAPTER 297
§ 297-12X
MAP 3 of 4



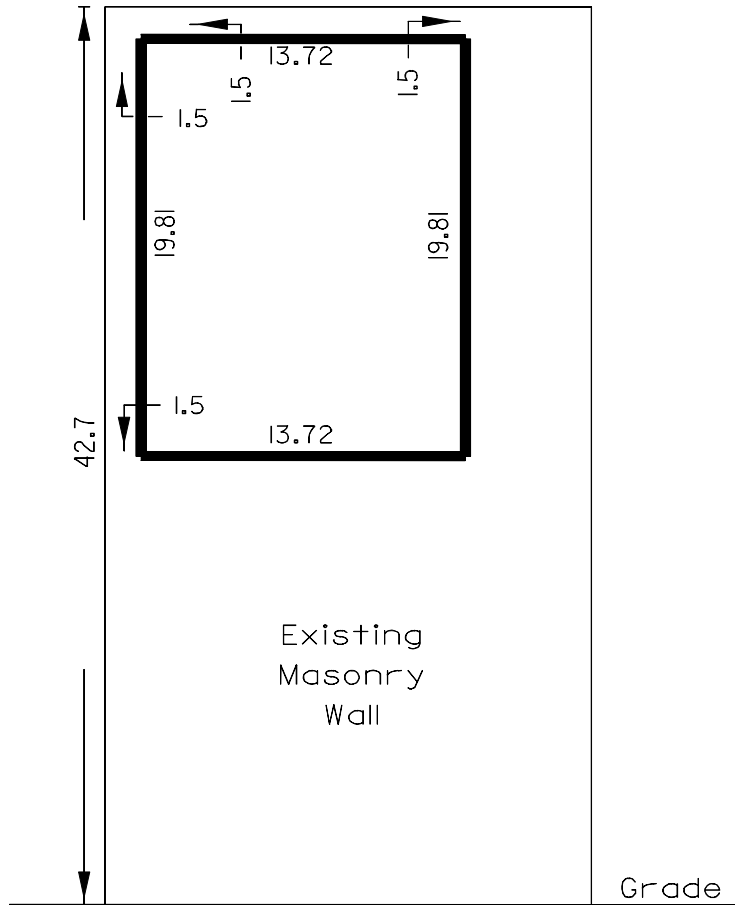
640 FLEET STREET
WEST ELEVATION

 SIGN AREA



WORKS AND EMERGENCY SERVICES
SURVEY AND MAPPING SERVICES
TORONTO APRIL, 2001
SIGN2/640FLEE3.DGN
FILE: 2402.67
MAP No. 49G-113 DRAWN: WL

CHAPTER 297
§297-12X
MAP 4 of 4



640 FLEET STREET
EAST ELEVATION

 SIGN AREA



WORKS AND EMERGENCY SERVICES
SURVEY AND MAPPING SERVICES
TORONTO APRIL, 2001
SIGN2/640FLEE4.DGN
FILE: 2402.67
MAP No. 49G-113 DRAWN: WL