

Authority: North Community Council Report No. 5, Clause No. 13,
as adopted by City of Toronto Council on June 26, 27 and 28, 2001
Enacted by Council: July 26, 2001

CITY OF TORONTO

BY-LAW No. 634-2001

**To amend City of North York By-law No. 7625 in respect of lands municipally known as
252 Finch Avenue East.**

WHEREAS authority is given to Council by Section 34 of the *Planning Act*, R.S.O. 1990, c.P. 13, as amended, to pass this by-law; and whereas Council of the City of Toronto has provided adequate information to the public and has held at least one public meeting in accordance with the *Planning Act*;

The Council of the City of Toronto HEREBY ENACTS as follows:

1. Schedules "B" and "C" of By-law No. 7625 are amended in accordance with Schedule 1 of this by-law.
2. Section 64.17 of By-law No. 7625 is amended by adding the following subsection:

64.17(32) RM2(32)

EXCEPTION REGULATIONS

- (a) The requirements of Section 64.17(19) of By-law No. 7625, as amended (RM2(19)) shall apply.
- (b) Notwithstanding (a) and (b) of Section 64.17(19) of By-law No. 7625, as amended, the following shall apply:
 - (i) The maximum gross floor area shall be 575 m².
 - (ii) The minimum lot frontage shall be 7.4 metres for each semi-detached dwelling unit and 14.7 metres for each semi-detached dwelling.

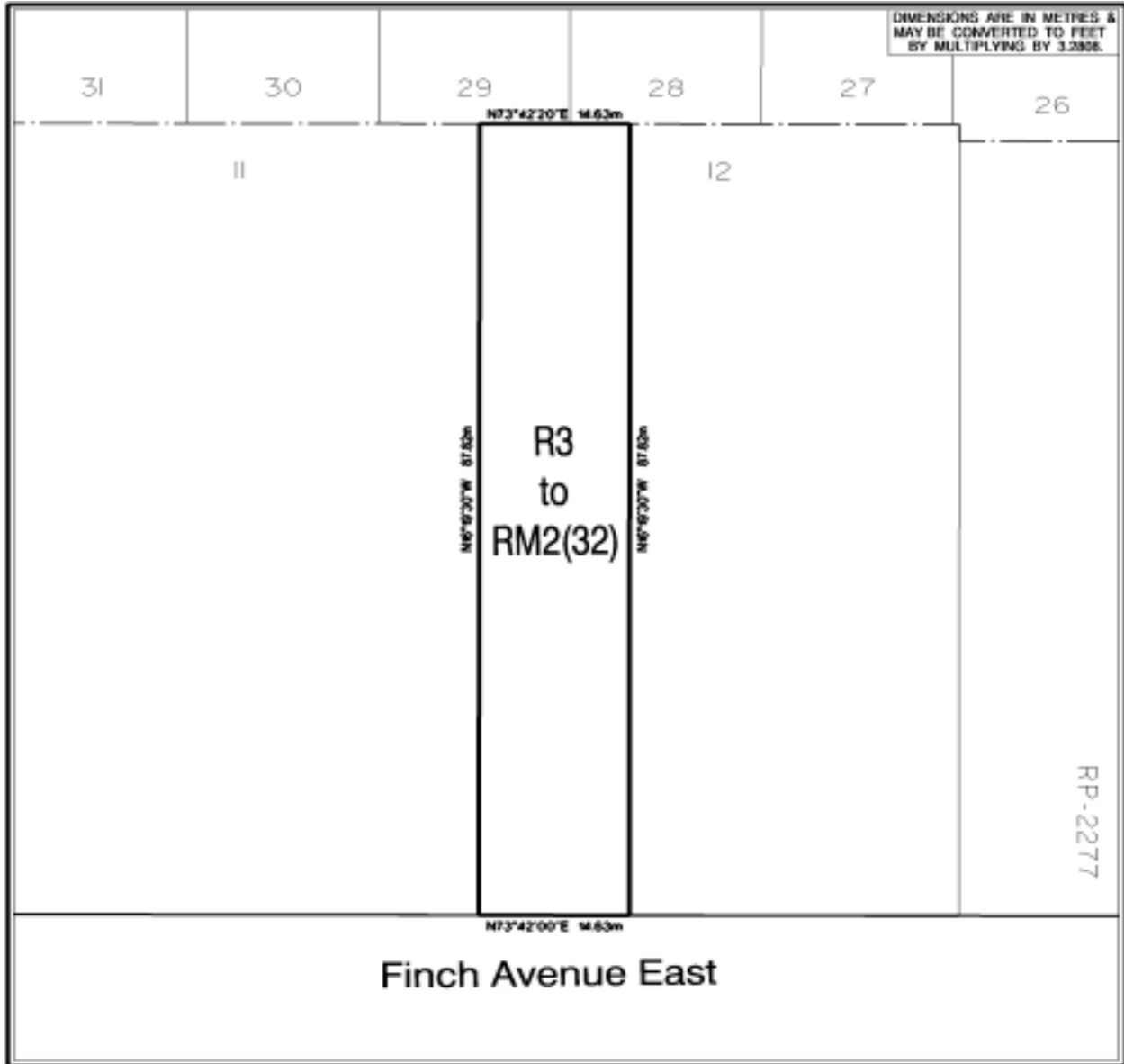
ENACTED AND PASSED this 26th day of July, A.D. 2001.

CASE OOTES,
Deputy Mayor

JEFFREY A. ABRAMS,
Acting City Clerk

(Corporate Seal)

SCHEDULE "1"



<p>This is Schedule " 1 " to By-Law _____ passed the _____ day of _____, 20 ____</p>		 TORONTO <small>City Planning Division</small> <small>North District</small>		
<p>(Sgd.) _____ CLERK</p>	<p>(Sgd.) _____ MAYOR</p>			
<p>Location: Part of Lot 12, Registered Plan 2277, City of Toronto</p>				
<p>File: TB ZBL 2001 0001</p>	<p>Prepared by: A.K.</p>	<p>Approved by: D.G.</p>	<p>Date: May 7, 2001</p>	<p>Filename: RM2(32).dgn</p>
<p>Source: Zoning, By-Law, Lot Line, Street Line and Street Name Data - City of Toronto, City Planning Division, North District. Street lines represent street dedications/road allowances and do not represent actual as-built curb lines of streets.</p>			 SUBJECT PROPERTY	