

Authority: Scarborough Community Council Report No. 8, Clause No. 16,
adopted as amended, by City of Toronto Council on July 24, 25 and 26, 2001
Enacted by Council: July 26, 2001

CITY OF TORONTO

BY-LAW No. 646-2001

**To amend Scarborough Zoning By-law No. 24982, as amended, the Employment Districts
Zoning By-law, with respect to the Progress Employment District.**

WHEREAS authority is given to Council by Section 34 of the *Planning Act*, R.S.O. 1990, c.P. 13, as amended, to pass this By-law; and whereas Council of the City of Toronto has provided adequate information to the public and has held at least one public meeting in accordance with the *Planning Act*;

Therefore, the Council of the City of Toronto enacts as follows:

1. **SCHEDULE “A”** of the Progress Employment District is amended by deleting the current zoning and replacing it with the following zoning as shown on Schedule ‘1’:

CCO-348-357-1379-1380-1714-2029

307

2. **SCHEDULE “B”, PERFORMANCE STANDARDS CHART**, is amended by adding the following Performance Standards:

INTENSITY OF USE

348. **Gross floor area** of all Retail Stores, **Personal Service Shops, Recreational Uses, Restaurants, and Day Nurseries** shall not exceed 0.35 times the total built **gross floor area**, to a maximum of 2,400 square metres.

PARKING

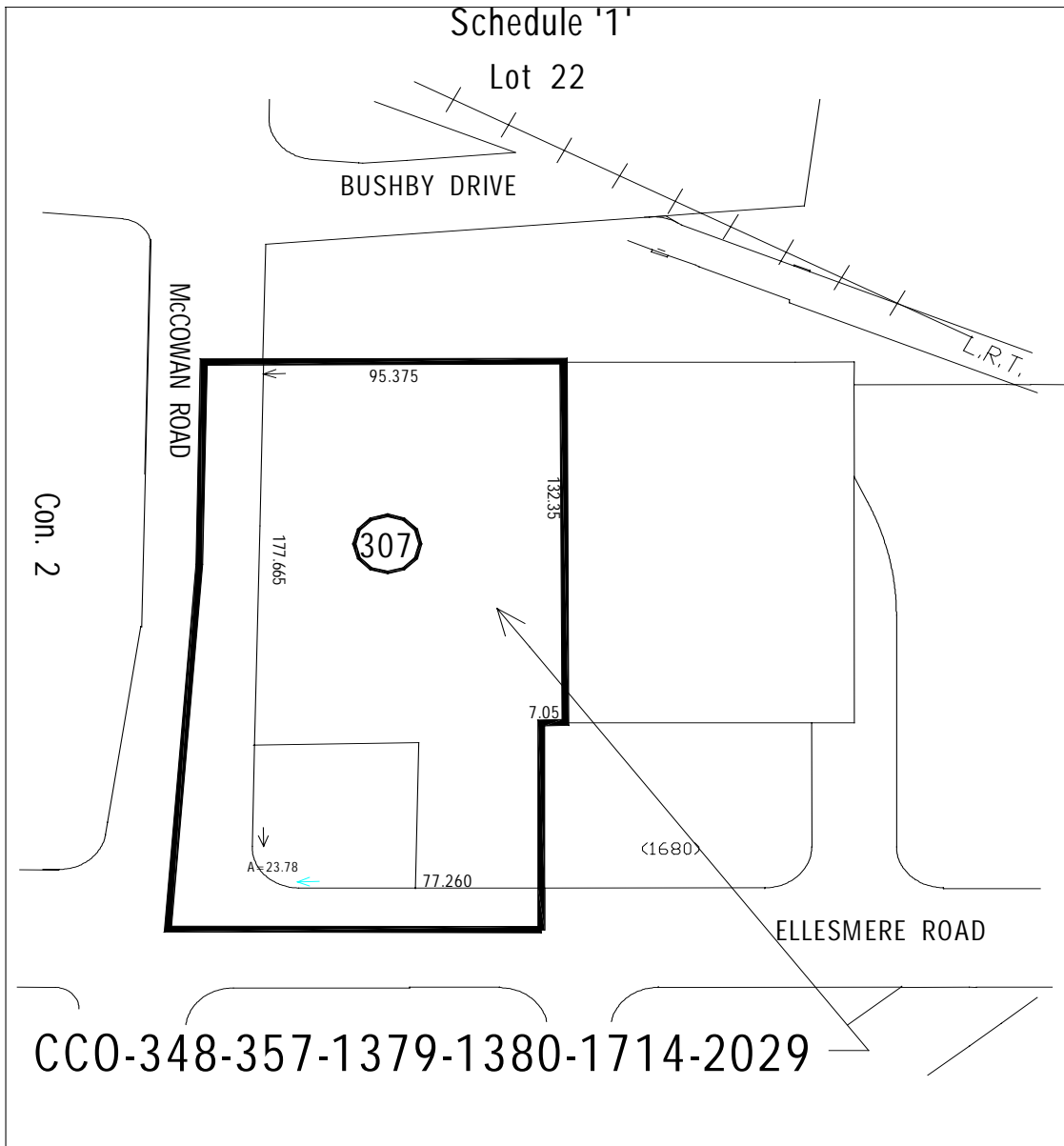
1379. Minimum of 1 and a maximum of 3 parking spaces per 100 square metres of **gross floor area** for all uses permitted in the **City Centre Office Zone (CCO)**, except for **restaurants**.
1380. Minimum of 10 and a maximum of 12 parking spaces per 100 square metres of **gross floor area** for **restaurants**.

ENACTED AND PASSED this 26th day of July, A.D. 2001.

CASE OOTES,
Deputy Mayor

JEFFREY A. ABRAMS,
Acting City Clerk

(Corporate Seal)




Zoning By-Law Amendment

N/E Corner of McCowan Rd/Ellemerere Rd

File # SC-Z20000015, SC-P20000007

 Area Affected By This By-Law


 Not to Scale
 Progress Employment District By-law
 Extracted 6/15/01 - BP
 Job No. Z20000015-Sch1-2