

Authority: Toronto East York Community Council Report No. 7, Clause No. 2,
as adopted by City of Toronto Council on October 2, 3 and 4, 2001
Enacted by Council: October 4, 2001

CITY OF TORONTO

BY-LAW No. 864-2001

**A By-law To adopt an amendment to the Official Plan for the former City of Toronto
respecting lands known as 800 Wellington Street West.**

The Council of the City of Toronto enacts as follows:

1. The text and map annexed hereto as Schedule "A" are hereby adopted as an amendment to the Official Plan for the former City of Toronto.
2. This is Official Plan Amendment No. 201.

ENACTED AND PASSED this 4th day of October, A.D. 2001.

CASE OOTES,
Deputy Mayor

ULLI WATKISS
City Clerk

(Corporate Seal)

SCHEDULE “A”

1. Section 18 of the Official Plan of the former City of Toronto is amended by adding Section 18.540 and Map 18.540, as follows:

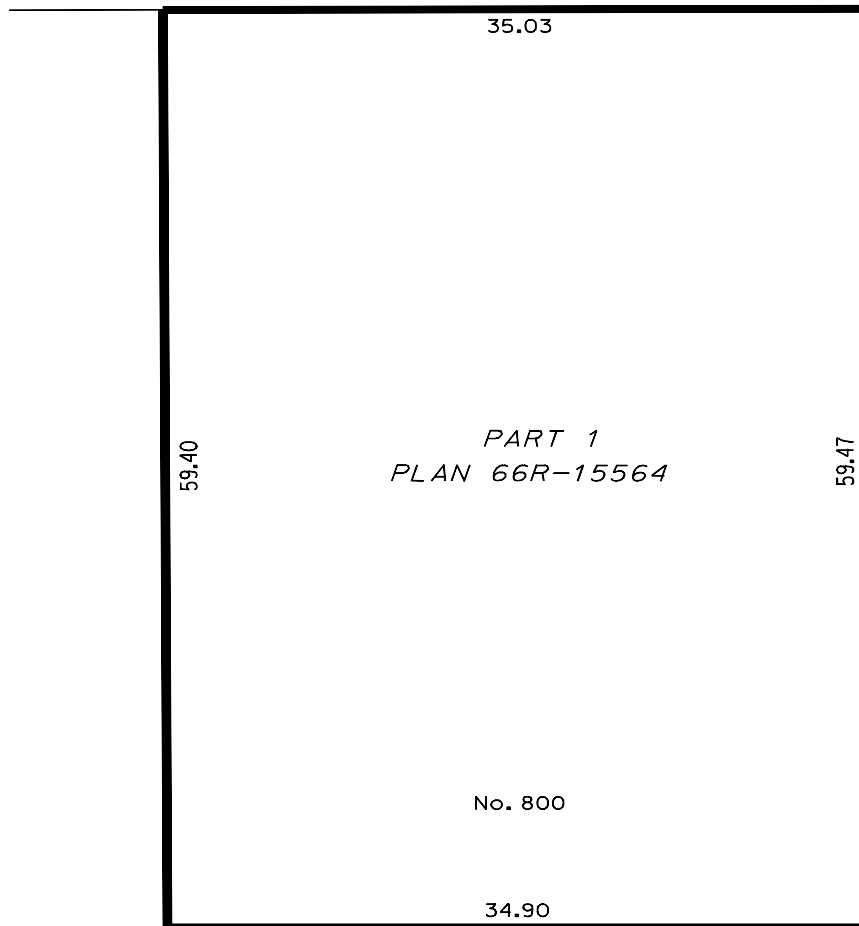
“18.540 Lands known as No. 800 Wellington Street West.

Despite any of the provisions of this Plan, Council may pass by-laws respecting the lands delineated by heavy lines on Map 18.540 to permit the construction of an apartment building, provided that

- (1) the *gross floor area* of the apartment building does not exceed 13,220 square metres;
 - (2) in any residential building constructed on the lands, not less than 30 percent of the units shall have two or more bedrooms; and
 - (3) the owner shall enter into an agreement with the City pursuant to Section 37 of the *Planning Act* to provide for a cash payment of \$362,000.00, to be used to assist in the implementation of the Community Improvement Plan adopted by Council for the Garrison Common North Area”.
2. Map A of Section 19.10 of the Official Plan for the former City of Toronto, entitled the “Garrison Common North Part II Plan”, is amended by redesignating the lands known as No. 800 Wellington Street West from “General Use Area ‘A’”, to “Medium Density Mixed Commercial - Residential Area”.

MAP 18.540

CANNIFF STREET



STAFFORD STREET

WELLINGTON STREET WEST



WORKS AND EMERGENCY SERVICES
SURVEY AND MAPPING SERVICES
TORONTO OCTOBER, 2001
OPAO1/18540.DGN
FILE: W9-Z23
MAP No. 49G-323 DRAWN: PG