

Authority: Clause No. 93 of the Ninth Report of the former Etobicoke Planning and Development Committee, 1995, as adopted by the former City of Etobicoke Council by Resolution No. 202, May 1, 1995, and Notice of Motion J(34), moved by Councillor Hall, seconded by Councillor Nunziata, as adopted by City of Toronto Council on October 2, 3 and 4, 2001

Enacted by Council: October 4, 2001

CITY OF TORONTO

BY-LAW No. 871-2001

To amend Chapters 320 and 324 of the Etobicoke Zoning Code and establish zoning on lands previously under Parkway Belt West Regulations, located west of Highway 427, south of Steeles Avenue.

WHEREAS authority is given to Council by Section 34 of the *Planning Act*, R.S.O. 1990, c.P. 13, as amended, to pass this By-law; and

WHEREAS Council of the former City of Etobicoke has provided adequate information to the public and held at least one public meeting in accordance with the *Planning Act*;

The Council of the City of Toronto HEREBY ENACTS as follows:

1. That the Zoning Map referred to in Section 320-5, Article II of the Etobicoke Zoning Code, is hereby amended by changing the classification of the lands located in the former Township of Etobicoke, as described in Schedule "A" annexed hereto from Parkway Belt West to Industrial, Class 1 (I.C1).
2. Notwithstanding Section 304-31D of the Etobicoke Zoning Code, the use of the lands for truck terminals shall be prohibited.
3. Chapter 324, Site Specifics, of the Etobicoke Zoning Code, is hereby amended to include reference to this by-law by adding the following to Section 324-1, Table of Site Specific By-laws:

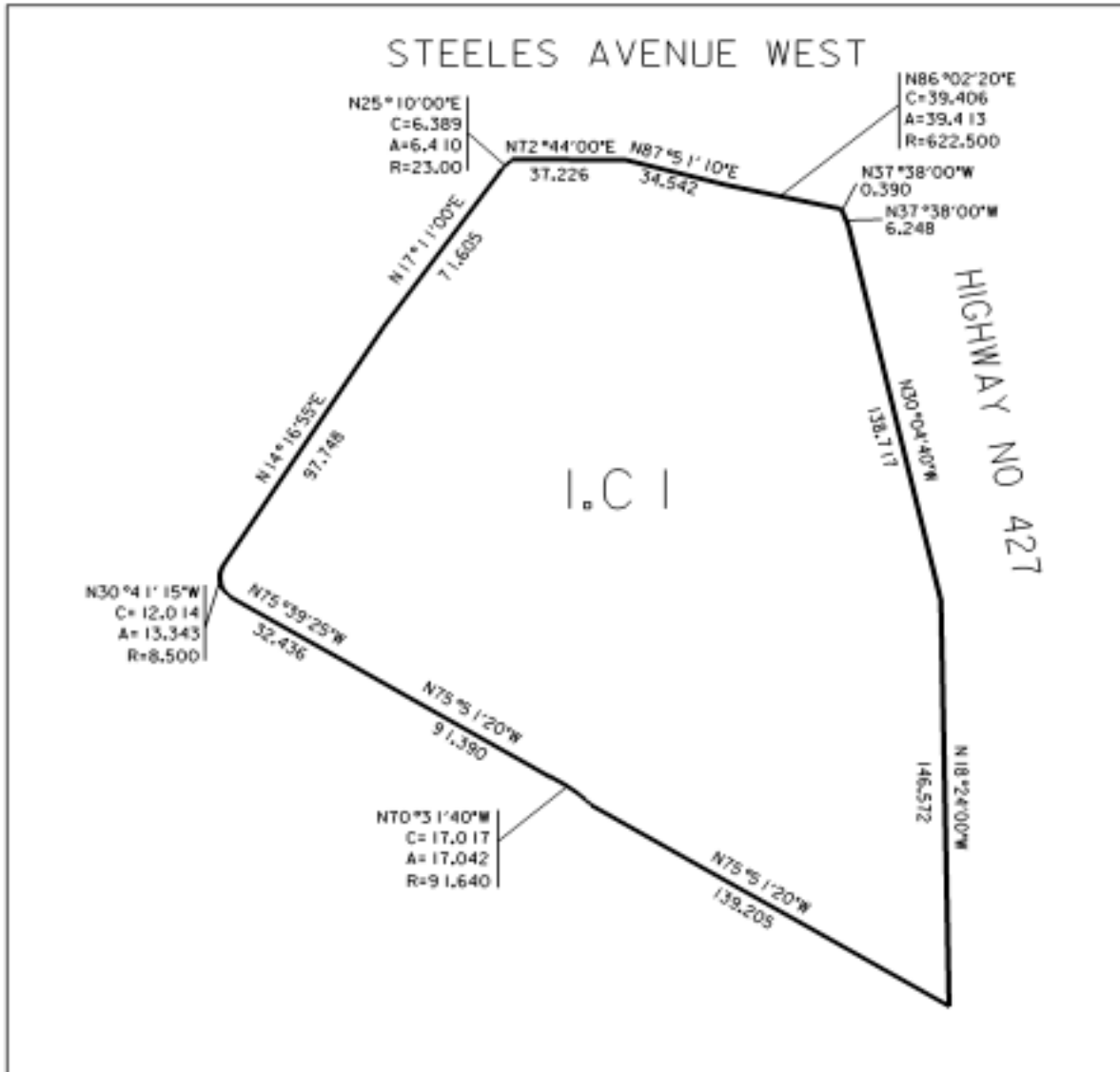
| BY-LAW NUMBER AND ADOPTION DATE | DESCRIPTION OF PROPERTY | PURPOSE OF BY-LAW |
|--|--|---|
| 871-2001 October 4, 2001 | Lands west of Hwy 427 south of Steeles Avenue | To zone the Lands Class 1 Industrial (I.C1), subject to certain use provisions. |

ENACTED AND PASSED this 4th day of October, A.D. 2001.

CASE OOTES,
Deputy Mayor

ULLI WATKISS
City Clerk

(Corporate Seal)



LOTS 13,14 AND PART OF LOTS 8,9,10,11,12,15 AND 16 NORTH SIDE OF ALBION ROAD AND LOTS 11,12,13,14 AND PART OF LOTS 15 AND 16 IN REAR OF SAID LOTS 10,11,12,13,14 AND 15 ON THE NORTH SIDE OF ALBION ROAD AND LOT 14 AND PART OF LOTS 12,13,15,16,17 AND 18 ON SOUTH SIDE OF STEELES AVENUE AND PART OF LOTS 10 AND 11 ON THE WEST SIDE OF ALCIDE STREET AND PART OF ALCIDE STREET AND PART OF WILLIAM STREET (AS STOPPED UP AND CLOSED BY BY-LAW 442, INSTRUMENT No T855774) AND PART OF ROAD ALLOWANCE BETWEEN TOWNSHIPS OF VAUGHAN AND ETOBICOKE, (KNOWN AS CORDON CRESCENT) REGISTERED PLAN 28

| | | | |
|------------------|------|--------------------------------|-------|
| Applicant's Name | | SIGNET DEVELOPMENT CORPORATION | |
| Assessment Map | K16 | Zoning Code Map/s | K16n |
| File No. | 2253 | Drawing No. | 2253a |
| | | Drawn By: | K.P. |

