

CITY OF TORONTO

BY-LAW No. 1126-2001(OMB)

To amend By-law No. 10217, the Agricultural Holding By-law and By-law No. 14402, the Malvern Community By-law of the former City of Scarborough, as amended.

WHEREAS the Ontario Municipal Board pursuant to its Order No. 2061 issued on August 17, 1998 and Order No. 0742 issued on May 15, 2000, upon hearing the appeal of High Glen Developments Limited and Rossland Real Estate Limited under Section 34(11) of the *Planning Act*, R.S.O. 1990, c.P. 13, as amended, deems it advisable to amend By-law No. 10217 and By-law No. 14402 of the former City of Scarborough.

THEREFORE By-law No. 10217 and By-law No. 14402, as amended, of the former City of Scarborough, is further amended as follows:

1. Amendment to By-law No. 10217, as amended, the Agricultural Holding By-law:

1.1 The provisions of By-law No. 10217, as amended, shall not apply to the land shown outlined on the attached Schedule "1".

2. Amendments to By-law No. 14402, as amended, the Malvern Community By-law:

2.1 **Schedule "A"** is amended by adding the land shown outlined on the attached Schedule "1" together with the following:

S - 1 - 128 - 129 - 234 - 257 - 307 - 521

SD - 2 - 128 - 129 - 217 - 257 - 307

O

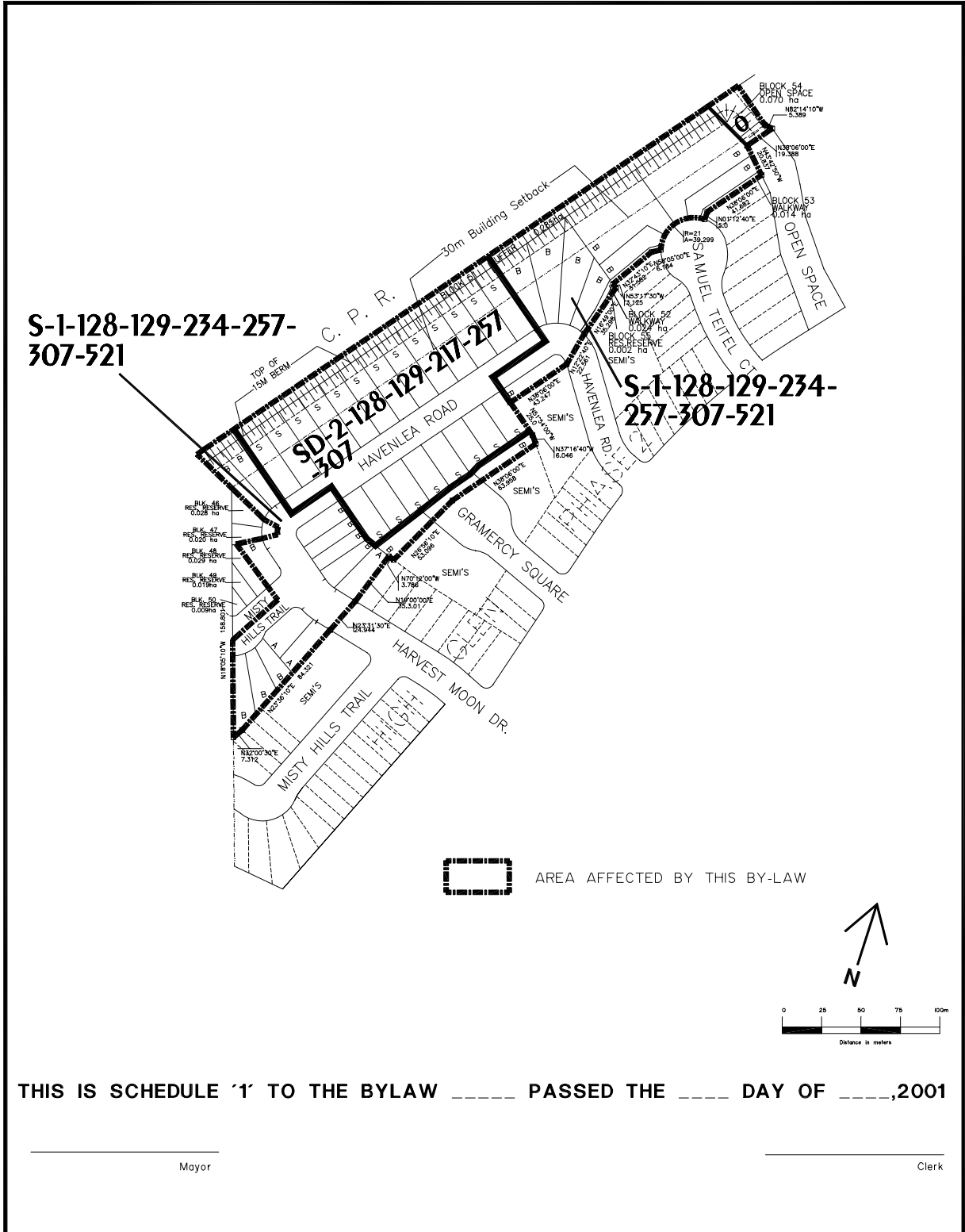
2.2 **Schedule "B", PERFORMANCE STANDARD CHART**, is amended by adding the following Performance Standard:

MAIN WALL SETBACKS FROM SIDE AND/OR REAR LOT LINES

257. Minimum 30 m building **setback** from the Canada Pacific Railway right-of-way as it existed on July 15, 1998.

PURSUANT TO THE ORDERS OF THE ONTARIO MUNICIPAL BOARD ISSUED ON AUGUST 17, 1998 AND MAY 15, 2000 IN BOARD FILE NO. PL971381.

SCHEDULE "1"



THIS IS SCHEDULE '1' TO THE BYLAW _____ PASSED THE _____ DAY OF _____,2001

Mayor

Clerk