

Authority: Toronto East York Community Council Report No. 1, Clause No. 9,  
as adopted by City of Toronto Council on February 13, 14 and 15, 2002  
Enacted by Council: February 15, 2002

**CITY OF TORONTO**

**BY-LAW No. 106-2002**

**To adopt an amendment to the Official Plan for the former City of Toronto respecting  
lands known as 30 Gloucester Street.**

WHEREAS the Council of the City of Toronto has had an application made to it for a proposed Official Plan Amendment respecting 30 Gloucester Street; and

WHEREAS the Council of the City of Toronto conducted a public meeting under Section 17 of the *Planning Act*, R.S.O. 1990, c.P. 13, as amended, regarding the proposed Official Plan Amendment; and

WHEREAS the Council of the City of Toronto, at its meeting held on February 13, 14 and 15, 2002, determined to amend the Official Plan for the former City of Toronto;

The Council of the City of Toronto HEREBY ENACTS as follows:

1. The text and map annexed hereto as Schedule "A" are hereby adopted as an amendment to the Official Plan for the former City of Toronto.
2. This is Official Plan Amendment No. 211.

ENACTED AND PASSED this 15th day of February, A.D. 2002.

CASE OOTES,  
Deputy Mayor

ULLI S. WATKISS  
City Clerk

(Corporate Seal)

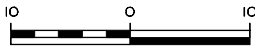
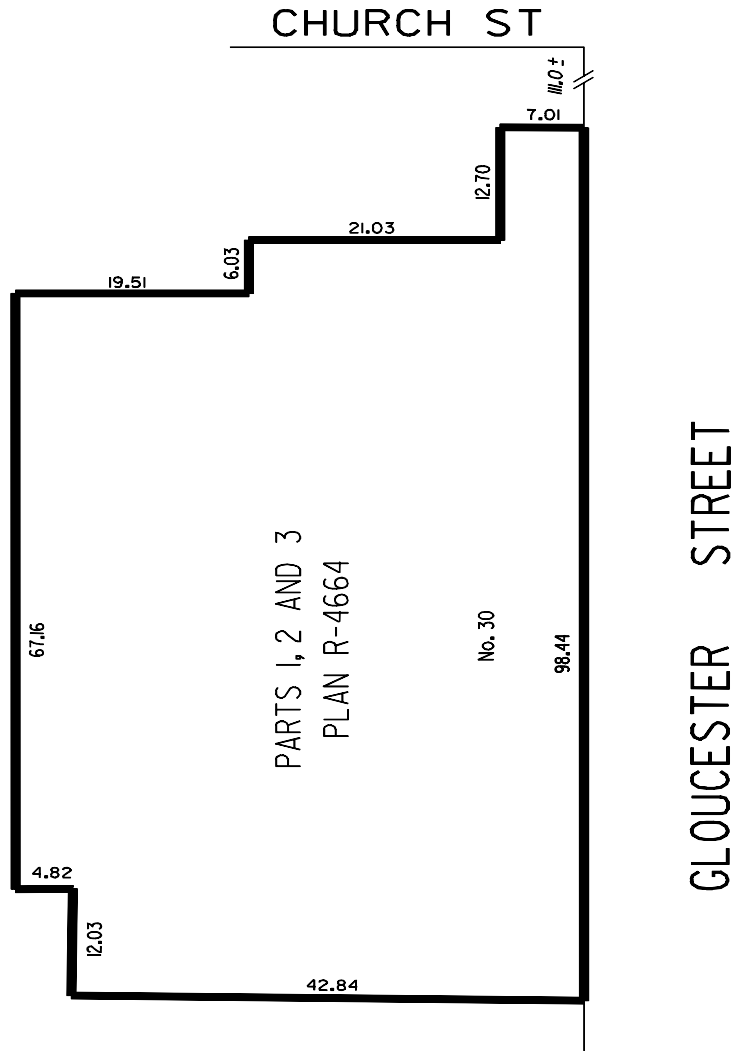
**SCHEDULE “A”**

1. Section 18 of the Official Plan for the former City of Toronto is amended by adding a new Section 18.549 as follows:

“18.549           Lands known as 30 Gloucester Street.

Notwithstanding any other provisions of this Plan, Council may pass by-laws applicable to the lands shown on Map 18.549 to permit the conversion to condominium of the building consisting of 253 *residential* units existing on those lands on February 13, 2002, provided the plan of condominium is registered within two years from the date of enactment of this amendment”.

# MAP 18.549



METRES



WORKS AND EMERGENCY SERVICES  
SURVEY AND MAPPING SERVICES  
TORONTO JANUARY, 2002  
DPA02/18549.DGN  
FILES: G65-Z7  
MAP No. 51H-321

DRAWN: WL