

Authority: Midtown Community Council Report No. 1, Clause No. 25
as adopted by City of Toronto Council on February 13, 14 and 15, 2002
Enacted by Council: February 15, 2002

CITY OF TORONTO

BY-LAW No. 107-2002

To adopt an amendment to the Official Plan for the former City of Toronto respecting lands known as 619 and 625 Avenue Road and 80 to 86 Oriole Road.

WHEREAS the Council of the City of Toronto has had an application made to it for a proposed Official Plan Amendment respecting 619 and 625 Avenue Road and 80 to 86 Oriole Road; and

WHEREAS the Council of the City of Toronto conducted a public meeting under Section 17 of the *Planning Act*, R.S.O. 1990, c.P. 13, as amended, regarding the proposed Official Plan Amendment; and

WHEREAS the Council of the City of Toronto, at its meeting held on February 13, 14 and 15, 2002, determined to amend the Official Plan for the former City of Toronto;

The Council of the City of Toronto HEREBY ENACTS as follows:

1. The text and map annexed hereto as Schedule "A" are hereby adopted as an amendment to the Official Plan for the former City of Toronto.
2. This is Official Plan Amendment No. 212.

ENACTED AND PASSED this 15th day of February, A.D. 2002.

CASE OOTES,
Deputy Mayor

ULLI S. WATKISS
City Clerk

(Corporate Seal)

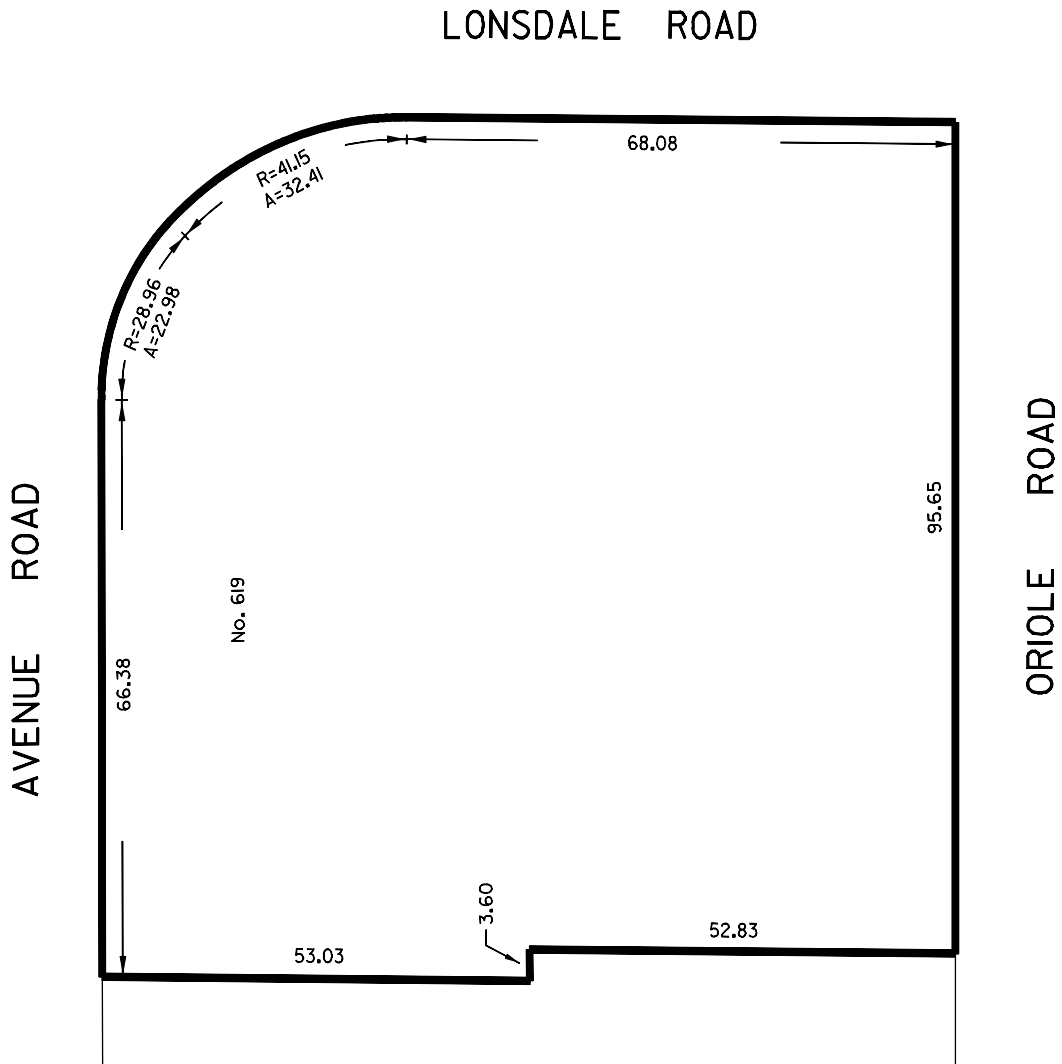
SCHEDULE “A”

1. Section 18 of the Official Plan for the former City of Toronto is amended by adding a new Section 18.550 as follows:

“18.550 Lands known as 619 and 625 Avenue Road and 80 to 86 Oriole Road.

Notwithstanding any other provisions of this Plan, Council may pass by-laws applicable to the lands shown on Map 18.550 to permit the conversion to condominium of the buildings consisting of 120 *residential* units existing on those lands on February 13, 2002, provided the plan of condominium is registered within two years from the date of enactment of this amendment”.

MAP 18.550



WORKS AND EMERGENCY SERVICES
SURVEY AND MAPPING SERVICES
TORONTO JANUARY, 2002
DPA02/18550.DGN
FILE: A17-Z5
MAP No. 50K-113 DRAWN: PG