

Authority: Toronto East York Community Council Report No. 10, Clause No. 15,
as adopted by City of Toronto Council on October 1, 2 and 3, 2002
Enacted by Council: October 3, 2002

CITY OF TORONTO

BY-LAW No. 742-2002

**To amend By-law No. 438-86, the Zoning By-law of the former City of Toronto respecting
lands known in the year 2002 as 111 Queen's Park.**

The Council of the City of Toronto HEREBY ENACTS as follows:

1. None of the provisions of sections 4(2)(a)(i)A, 4(2)(a)(ii)A and 12(2)(309) of By-law No. 438-86, being "A By-law to regulate the use of land and the erection, use, bulk, height, spacing of and other matters relating to buildings and structures and to prohibit certain uses of lands and the erection and use of certain buildings and structures in various areas of the City of Toronto", as amended, shall apply to prevent the erection and use of a *mixed-use building* on the *lot* provided:
 - (1) the *lot* consists of lands shown outlined by heavy lines on Map 1;
 - (2) the *non-residential gross floor area* of the *mixed-use building* does not exceed 3148 square metres;
 - (3) the maximum *height* of the *mixed-use building* does not exceed 18 metres above *grade*; and
 - (4) no part of the building or structure above *grade* shall extend beyond the area designated for that building or structure outlined by heavy lines on Map 2, attached hereto and forming part of this by-law.
2. For the purposes of this By-law, the terms in italics have the same meaning as in By-law No. 438-86.

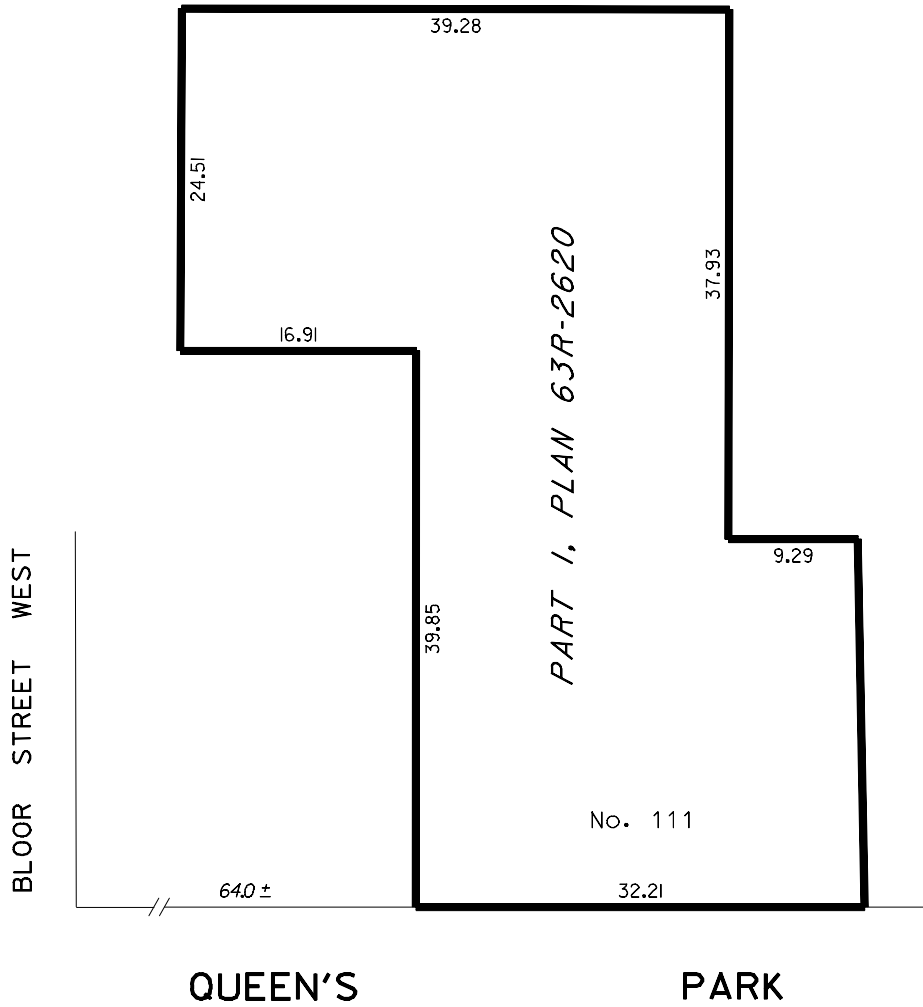
ENACTED AND PASSED this 3rd day of October, A.D. 2002.

CASE OOTES,
Deputy Mayor

ULLI S. WATKISS
City Clerk

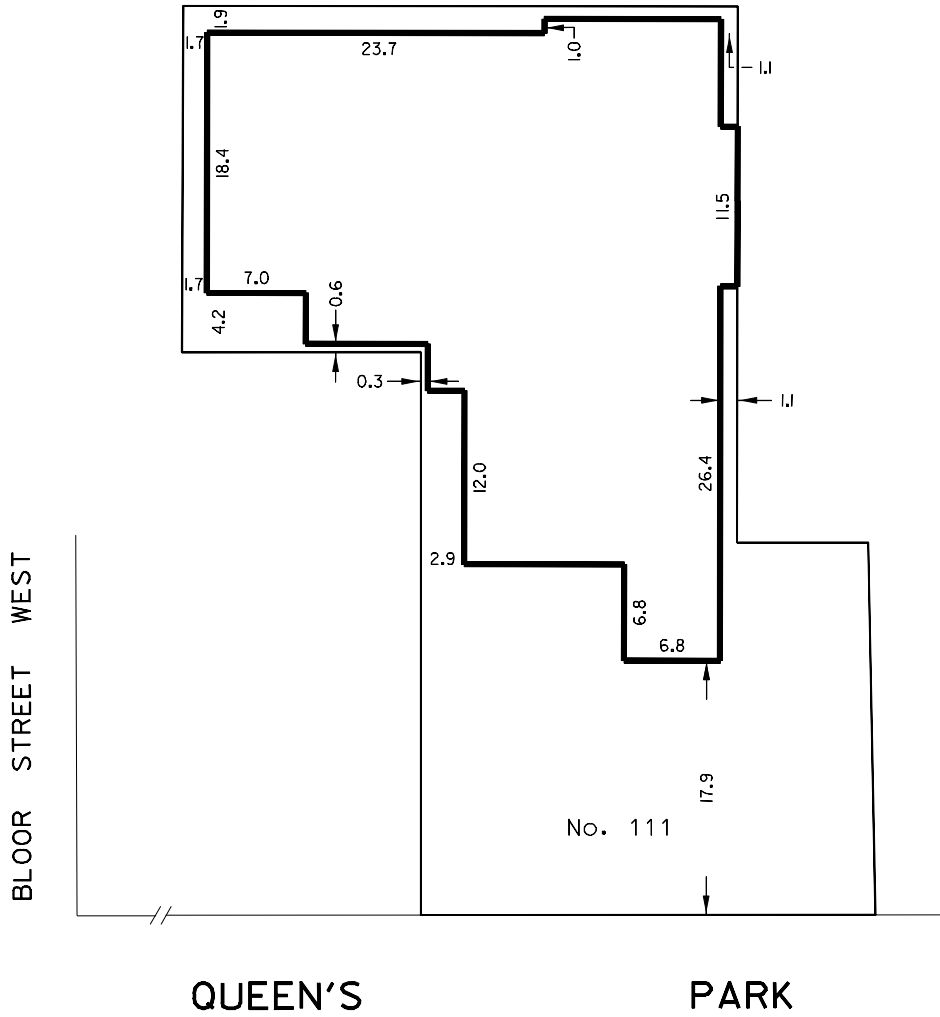
(Corporate Seal)

MAP 1



WORKS AND EMERGENCY SERVICES
SURVEY AND MAPPING SERVICES
TORONTO SEPTEMBER, 2002
BL02/1110UP1.DGN
FILE: 09-Z4
MAP No. 50H-323 DRAWN: D.R.

MAP 2



WORKS AND EMERGENCY SERVICES
SURVEY AND MAPPING SERVICES
TORONTO SEPTEMBER, 2002
BL02/111QUP2.DGN
FILE: 09-Z4
MAP No. 50H-323 DRAWN: D.R.