

Authority: Toronto East York Community Council Report No. 12, Clause No. 5,
as adopted by City of Toronto Council on November 26, 27 and 28, 2002
Enacted by Council: November 28, 2002

CITY OF TORONTO

BY-LAW No. 1065-2002

**To adopt an amendment to the Official Plan for the former City of Toronto respecting
lands municipally known as 64 Colgate Avenue.**

WHEREAS the Council of the City of Toronto has an application made to it for a proposed Official Plan Amendment respecting the lands municipally known in the year 2001 as 64 Colgate Avenue; and

WHEREAS the Council of the City of Toronto conducted a public meeting under section 17 of the *Planning Act*, R.S.O. 1990, c. P.13, as amended, regarding the proposed Official Plan Amendment; and

WHEREAS the Council of the City of Toronto, at its meeting held November 26, 27 and 28, 2002 determined to amend the Official Plan for the former City of Toronto;

The Council of the City of Toronto HEREBY ENACTS as follows:

1. The text and map annexed hereto as Schedule "A" are hereby adopted as amendments to the Official Plan for the former City of Toronto.
2. This is Official Plan Amendment No. 246.

ENACTED AND PASSED this 28th day of November, A.D. 2002.

CASE OOTES,
Deputy Mayor

ULLI S. WATKISS
City Clerk

(Corporate Seal)

SCHEDULE “A”

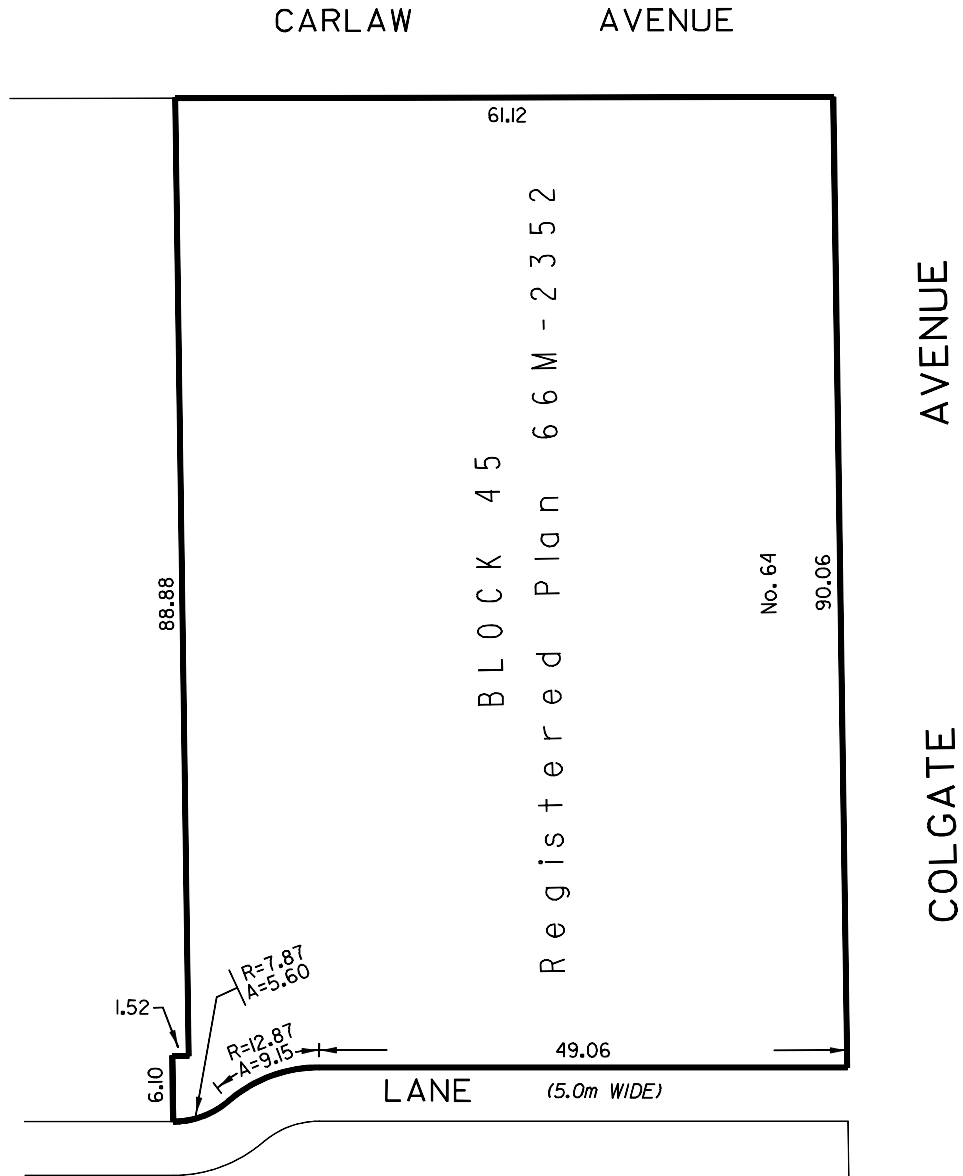
1. Section 18 of the Official Plan, for the former City of Toronto is hereby amended by adding the following Section 18.580 and the attached Map 18.580:

“18.580 Lands municipally known in the year 2001 as 64 Colgate Avenue.

See Map 18.580 at the end of this Section.

Notwithstanding any other provisions of this Plan, Council may pass by-laws applicable to the lands municipally known in the year 2001 as 64 Colgate Avenue and shown on Map 18.580, to permit the erection and use of an 8-storey building containing live-work units that may be used for work purposes by any number of persons provided that the *residential gross floor area*, exclusive of common amenity space provided to residents for social and recreational purposes, does not exceed 3.0 times the *lot area*.

MAP 18.580



WORKS AND EMERGENCY SERVICES
SURVEY AND MAPPING SERVICES
TORONTO NOVEMBER, 2002
DPO2/18580.DGN
FILE: C33-Z1
MAP No. 52H-312 DRAWN: D.R.