

Authority: Toronto and East York Community Council Report No. 6, Clause No. 7,  
as adopted by City of Toronto Council on July 20, 21 and 22, 2004  
Enacted by Council: July 22, 2004

**CITY OF TORONTO**

**BY-LAW No. 697-2004**

**To adopt Amendment No. 304 to the Official Plan for the former City of Toronto with  
respect to lands known municipally as 7 McGee Street.**

WHEREAS the Council of the City of Toronto has been requested to amend its Official Plan, pursuant to Section 21 of the *Planning Act*, R.S.O. 1990 c.P. 13, as amended, respecting the lands municipally known in the year 2004 as 7 McGee Street; and

WHEREAS the Toronto and East York Community Council conducted a public meeting on July 6, 2004 under Section 17 of the *Planning Act* regarding the proposed Official Plan Amendment; and

WHEREAS the Council of the City of Toronto, at its meeting held on July 20, 21 and 22, 2004 determined to amend the Official Plan for the former City of Toronto;

The Council of the City of Toronto HEREBY ENACTS as follows:

1. The text and map annexed hereto as Schedule "A" are hereby adopted as an amendment to the Official Plan for the former City of Toronto; and
2. This is Official Plan Amendment No. 304.

ENACTED AND PASSED this 22nd day of July, A.D. 2004.

DAVID R. MILLER,  
Mayor

ULLI S. WATKISS  
City Clerk

(Corporate Seal)

**SCHEDULE “A”**

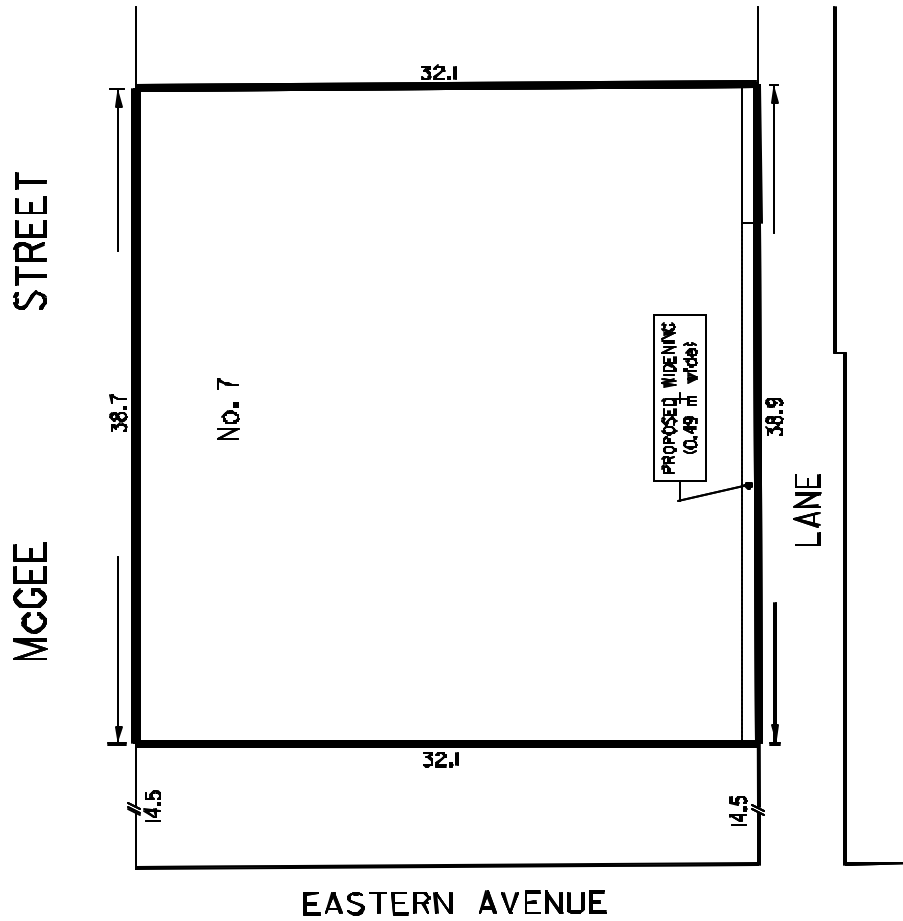
1. Map 1 of the Official Plan Part I for the former City of Toronto entitled “Generalized Land Use” is amended by redesignating to Low Density Residence Areas the lands known in the year 2004 as No. 7 McGee Street as identified on the following Map 1 and as shown thereon as Low Density Residence Area.
2. Section 18 of the Official Plan Part I for the former City of Toronto is hereby amended by adding the following Section 18.632 as follows:

“18. 632           Lands known as 7 McGee Street.

See Map 18.632 at the end of this Section.

- (1) Notwithstanding those provisions of this Plan which may restrict the density of the lands shown on Map 18.632, (the “Site”), Council may pass by-laws applicable to the Site to permit the erection and use of one or more residential buildings on the Site provided that the total *gross floor area* for all buildings and structures on the *Site* does not exceed 1243.22 m<sup>2</sup>.”

MAP 1

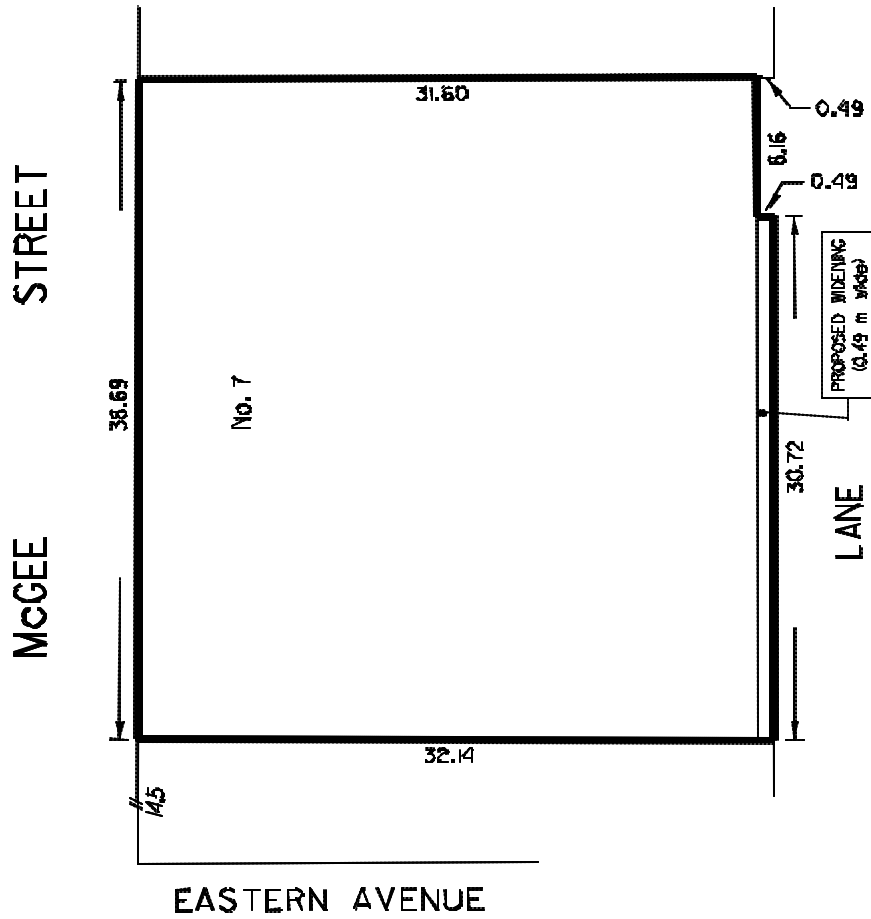


 LOW DENSITY RESIDENCE AREA



WORKS AND EMERGENCY SERVICES  
SURVEY AND MAPPING SERVICES  
TORONTO JULY, 2004  
DPA04/TMG0000P1.DGN  
FILE: W32-Z1-2402-03-3  
MAP No. 520-322 DRAWN: D.R

MAP 18.632



WORKS AND EMERGENCY SERVICES  
SURVEY AND MAPPING SERVICES  
TORONTO JULY, 2004  
CP404/18632-DGN  
FILE# M52-21  
MAP No. 625-322 DRAWN: WS/VG