

Authority: Toronto and East York Community Council Report 1, Clause 56,  
as adopted by City of Toronto Council on January 31, February 1 and 2, 2006  
Enacted by Council: February 2, 2006

**CITY OF TORONTO**

**BY-LAW No. 59-2006**

**To amend the former City of Toronto Municipal Code Ch. 400, Traffic and Parking,  
with respect to speed control zones.**

The Council of the City of Toronto HEREBY ENACTS as follows:

1. Municipal Code Chapter 400, Traffic and Parking, of the former City of Toronto is amended as follows:
  - A. By adding the following Subsection 400-28B (243) after Subsection 400-28B (242):

(243) 421F-8131 and 421F-8132
  - B. By adding the following Subsection 400-70B (243) to Schedule XVII (Speed Control Zones) in § 400-70 after Subsection 400-70B (242):

(243) Public lane system bounded by Dundas Street East, Carlaw Avenue, Colgate Avenue, Natalie Place and Logan Avenue (Ward 30), as shown on Drawing Nos. 421F-8131 and 421F-8132.

ENACTED AND PASSED this 2nd day of February, A.D. 2006.

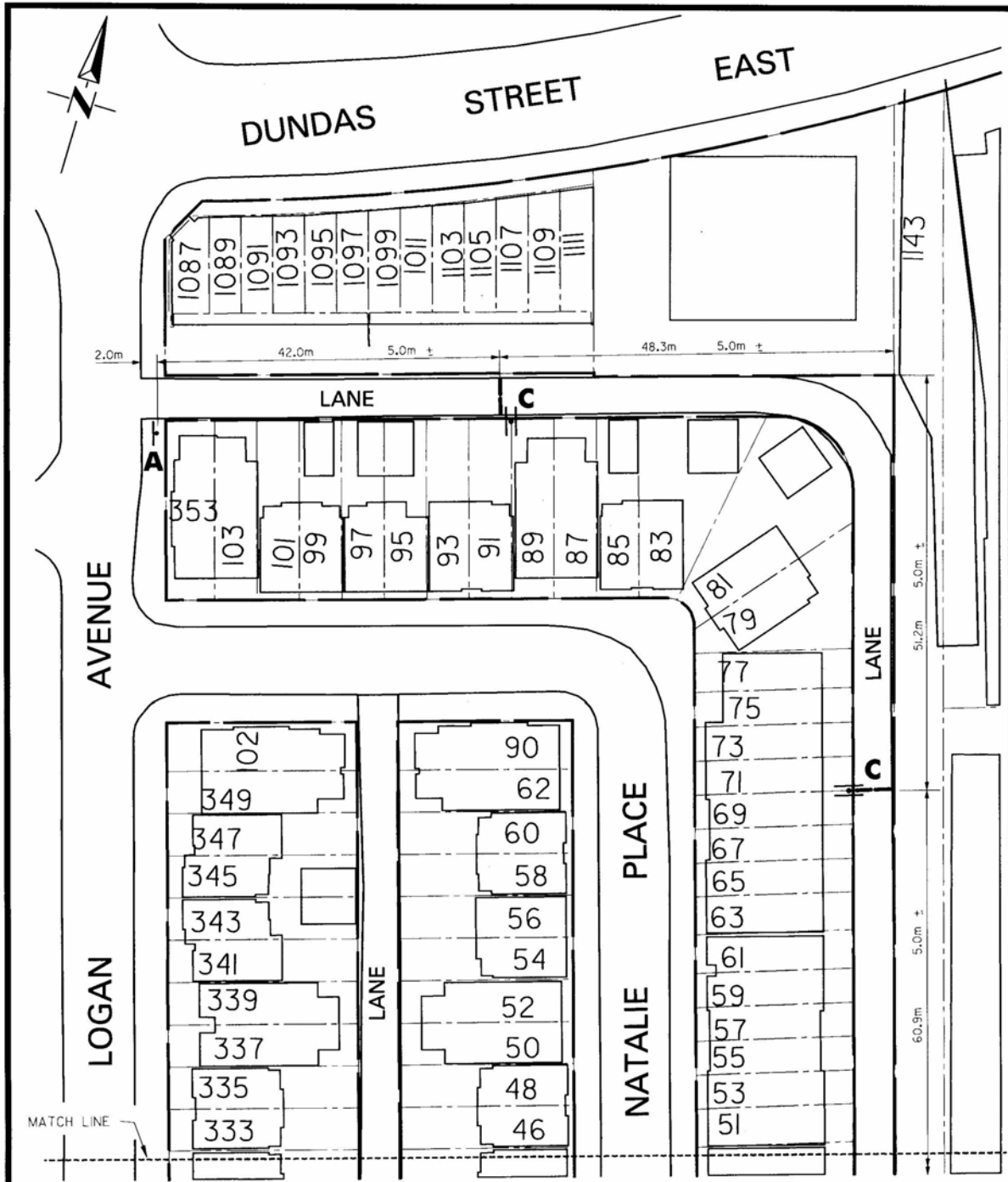
DAVID R. MILLER,  
Mayor

ULLI S. WATKISS  
City Clerk

(Corporate Seal)

DRAWING NO. 421F-8131

WARD 30



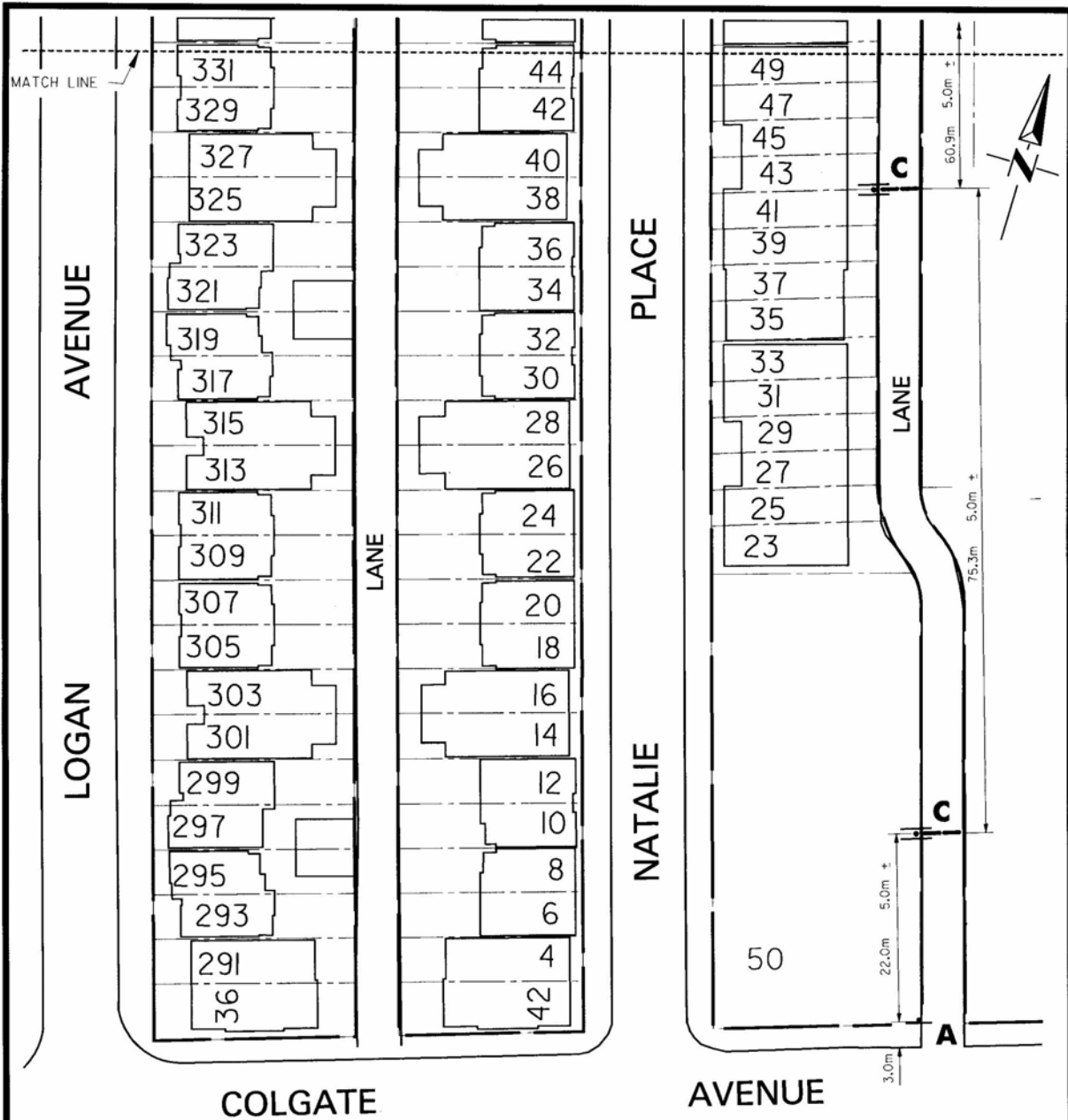
REFER TO DWG. NOS. 421F-6643 AND 421F-4276 FOR DETAILS OF SPEED BUMPS AND SIGNS RESPECTIVELY.

NOTE: ALL DIMENSIONS ARE APPROXIMATE. FOR MORE INFO, REGARDING SPEED BUMPS IN THIS LANE, SEE DWG. NO. 421F-8132.

**SPEED BUMP AND SIGN LAYOUT  
IN LANE SYSTEM BOUNDED BY DUNDAS ST. E., CARLAW AV.,  
COLGATE AV., NATALIE PL., & LOGAN AV.**

DRAWING NO. 421F-8132

WARD 30



REFER TO DWG. NOS. 421F-6643 AND  
421F-4276 FOR DETAILS OF SPEED  
BUMPS AND SIGNS RESPECTIVELY.

NOTE: ALL DIMENSIONS ARE APPROXIMATE.  
FOR MORE INFO. REGARDING SPEED  
BUMPS IN THIS LANE, SEE DWG.  
NO. 421F-8131.

**SPEED BUMP AND SIGN LAYOUT  
IN LANE SYSTEM BOUNDED BY DUNDAS ST. E., CARLAW AV.,  
COLGATE AV., NATALIE PL., & LOGAN AV.**

P.D.M.

DWG. NO. 421F-8132

DECEMBER 2005

TRANSPORTATION SERVICES

TORONTO & EAST YORK DISTRICT