

Authority: Scarborough Community Council Report 9, Clause 6,
as adopted by City of Toronto Council on December 5, 6 and 7, 2005
Enacted by Council: February 2, 2006

CITY OF TORONTO

BY-LAW No. 72-2006

To amend the former City of Scarborough Woburn Community Zoning By-law No. 9510, as amended, with respect to lands municipally known as 952 - 976 Brimorton Drive.

WHEREAS authority is given to Council by Section 34 of the *Planning Act*, R.S.O. 1990, c.P. 13, as amended, to pass this By-law; and

WHEREAS Council of the City of Toronto has provided adequate information to the public and has held at least one public meeting in accordance with the *Planning Act*;

The Council of the City of Toronto HEREBY ENACTS as follows:

1. Schedule 'A' of the Woburn Community Zoning By-law is amended by deleting the current zoning and replacing it with Street Townhouse Residential (ST) zoning, so that the amended zoning shall read as follows as shown on Schedule '1':

ST – 40K – 61E – 106 – 167 – 168 – 169 – 170 – 172 – 214 – 308 – 500 – 503

ST – 106 – 167 – 168 – 169 – 171 – 172 – 214 – 308 – 500 – 503

ST --106 – 167 – 168 – 169 – 172 – 215 – 308 – 500 – 502

2. Schedule "B", **PERFORMANCE STANDARD CHART** is amended by adding the following Performance Standards:

MISCELLANEOUS

167. Section 6, **Coverage**, of **CLAUSE VI – PROVISIONS FOR ALL ZONES**, shall not apply.

168. Building **height** maximum 3 storeys.

169. Building **height** maximum 11 metres.

170. **Rear yard** minimum 6.5 metres.

171. **Rear yard** minimum 6 metres.

172. Notwithstanding any other provisions of this By-Law, all **dwelling units** shall front on a public **street** connecting Brimorton Drive with Orton Park Road.

INTENSITY OF USE

214. One **dwelling unit** per parcel with minimum frontage of 6 metres on a public street and minimum lot area of 118 square metres.
215. One **dwelling unit** per parcel with minimum frontage of 4.8 metres on a public street and minimum lot area of 60 square metres.

PARKING

308. Minimum garage space dimensions:

single car garage:	3 metres by 6 metres
double car garage:	5.7 metres by 6 metres
tandem parking stalls:	3 metres by 11.7 metres

BUILDING SETBACKS FROM STREET LINES

500. Minimum 3 metres from Brimorton Drive and Orton Park Road, except where a 6 metre radius corner rounding applies, the **setback** shall be reduced and no portion of the **main wall** shall be less than 0.6 metres from the **street** line arc.

Corner rounding shall mean the street line comprised of the arc formed by a radius extending between the beginning of the curve to the end of the curve of such arc.

502. Minimum 0.5 metres from the **street** line.
503. Minimum 2 metres from the **street** line.

ENACTED AND PASSED this 2nd day of February, A.D. 2006.

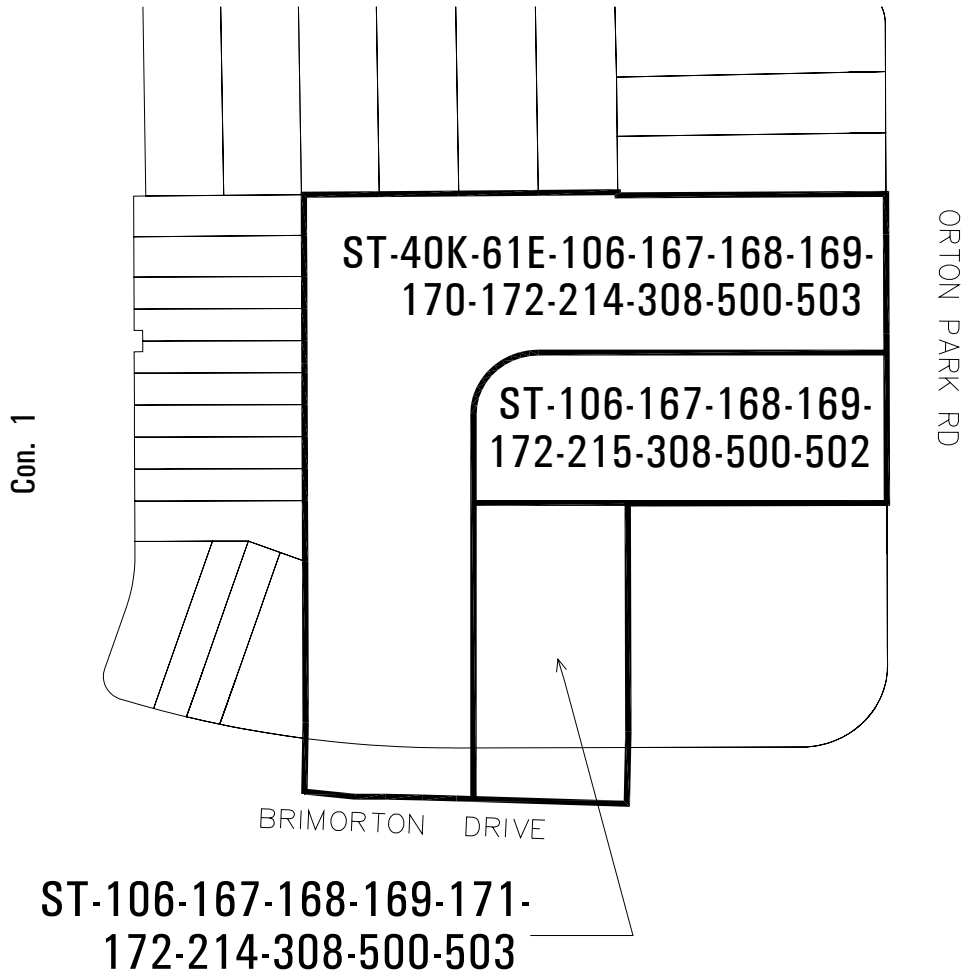
DAVID R. MILLER,
Mayor

ULLI S. WATKISS
City Clerk

(Corporate Seal)

Schedule '1'

Lot 15



Zoning By-Law Amendment

Brimorton Drive & Orton Park Road

File # 04-178040 OZ

 Area Affected By This By-Law

Woburn Community Bylaw
Not to Scale
1/23/06
