

Authority: Etobicoke York Community Council Report 1, Clause 2,
as adopted by City of Toronto Council on January 31, February 1 and 2, 2006
Enacted by Council: June 14, 2006

CITY OF TORONTO

BY-LAW No. 487-2006

To adopt Amendment No. 359 to the Official Plan for the former City of Toronto with respect to lands municipally known as 147 Brandon Avenue.

WHEREAS authority is given to Council under the *Planning Act*, R.S.O. 1990, c.P. 13, as amended, to pass this By-law; and

WHEREAS Council of the City of Toronto has provided adequate information to the public and has held at least one public meeting in accordance with the *Planning Act*;

The Council of the City of Toronto HEREBY ENACTS as follows:

1. The text and map attached as Schedule "A" to this by-law are hereby adopted as an amendment to the Official Plan for the former City of Toronto.
2. This is Official Plan Amendment No. 359.

ENACTED AND PASSED this 14th day of June, A.D. 2006.

DAVID R. MILLER,
Mayor

ULLI S. WATKISS
City Clerk

(Corporate Seal)

SCHEDULE “A”

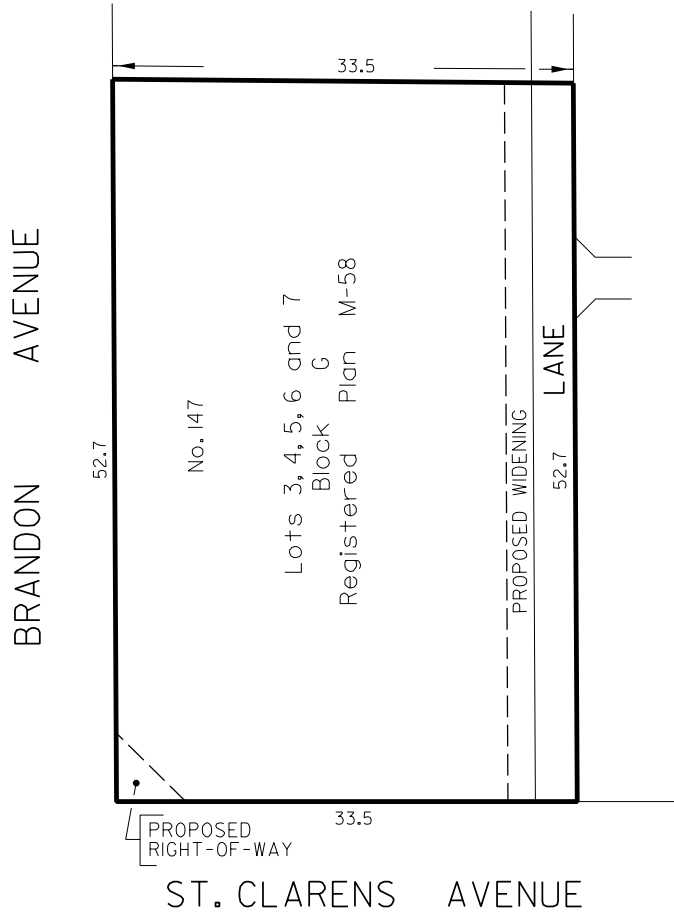
1. Map 1 of the Official Plan Part I for the former City of Toronto entitled “Generalized Land Use” is amended by re-designating to Low Density Residence Areas the lands know in the year 2005 as 147 Brandon Avenue, as identified on the following Map 1, and as shown thereon as Low Density Residence Areas.
2. Section 18 of the Official Plan Part I for the former City of Toronto is amended by inserting a new Section 18.678, as follows:

“18.678 Lands known as 147 Brandon Avenue

See Map 18.678 at the end of this Section

Notwithstanding any provisions of this Plan, Council may pass by-laws applicable to the lands know municipally as 147 Brandon Avenue to permit the erection and use of one or more residential buildings on the site provided that the total residential gross floor area of such buildings, in total, does not exceed 1710 square metres.”

MAP 1

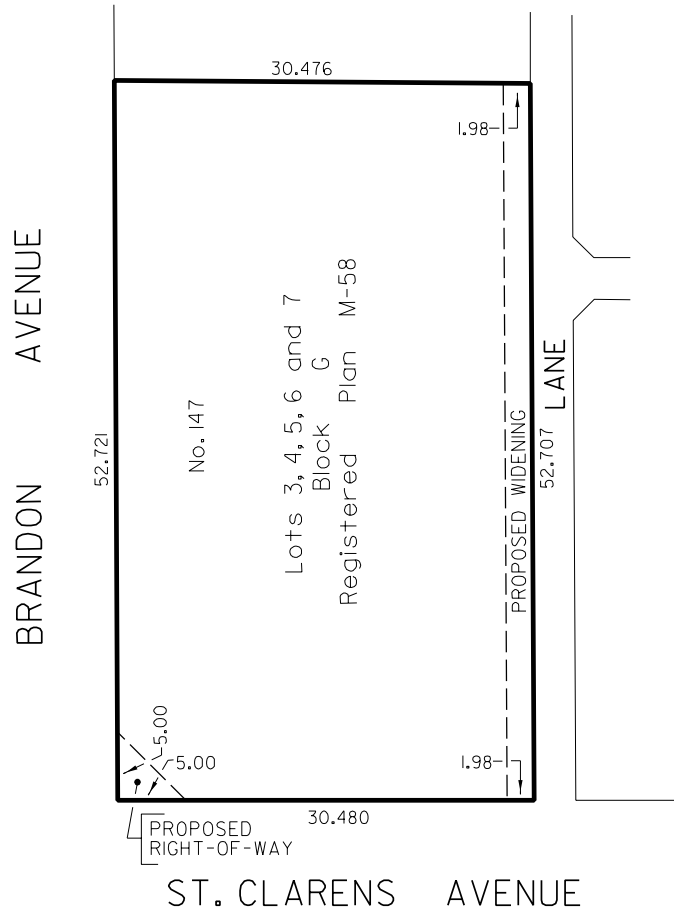


LOW DENSITY RESIDENCE AREAS



SURVEY AND MAPPING SERVICES
TORONTO DECEMBER 2005
OPA05/147BRAND-OP1.DGN
FILE: B69-Z6
MAP No. 48J-323 DRAWN: VG

MAP 18.678



SURVEY AND MAPPING SERVICES
TORONTO DECEMBER 2005
DIPA05/18678.DGN
FILE: B69-Z6
MAP No. 48J-323 DRAWN: VG