

Authority: Economic Development and Parks Committee Report 6, Clause 11,
as adopted by City of Toronto Council on September 25, 26 and 27, 2006
Enacted by Council: September 27, 2006

CITY OF TORONTO

BY-LAW No. 848-2006

To amend By-law No. 553-2000, being a by-law to designate an area on both sides of Yonge Street from Crescent Road to the south and Woodlawn Avenue to the north as an improvement area, and to amend Municipal Code Chapter 19, Business Improvement Areas, to replace Map No. 2 of the improvement area.

WHEREAS By-law No. 553-2000 designates the area on both sides of Yonge Street from Crescent Road to the south and Woodlawn Avenue to the north as an improvement area; and

WHEREAS by decision of the Ontario Municipal Board on March 29, 2001, the property known as 99 Crown's Lane was excluded from the improvement area; and

WHEREAS Map No. 2 of By-law No. 553-2000 and Map No. 2 of the Rosedale Main Street Business Improvement Area in Schedule A of the Toronto Municipal Code Chapter 19, Business Improvement Areas, must be replaced to reflect the decision of the Ontario Municipal Board to exclude 99 Crown's Lane from the improvement area;

The Council of the City of Toronto HEREBY ENACTS as follows:

1. By-law No. 553-2000 is amended by deleting Map No. 2 and substituting Map No. 2 in Schedule A at the end of this by-law.
2. Schedule A of Toronto Municipal Code Chapter 19, Business Improvement Areas is amended by deleting Map No. 2 of the Rosedale Main Street Business Improvement Area and substituting Map No. 2 in Schedule B at the end of this by-law.

ENACTED AND PASSED this 27th day of September, A.D. 2006.

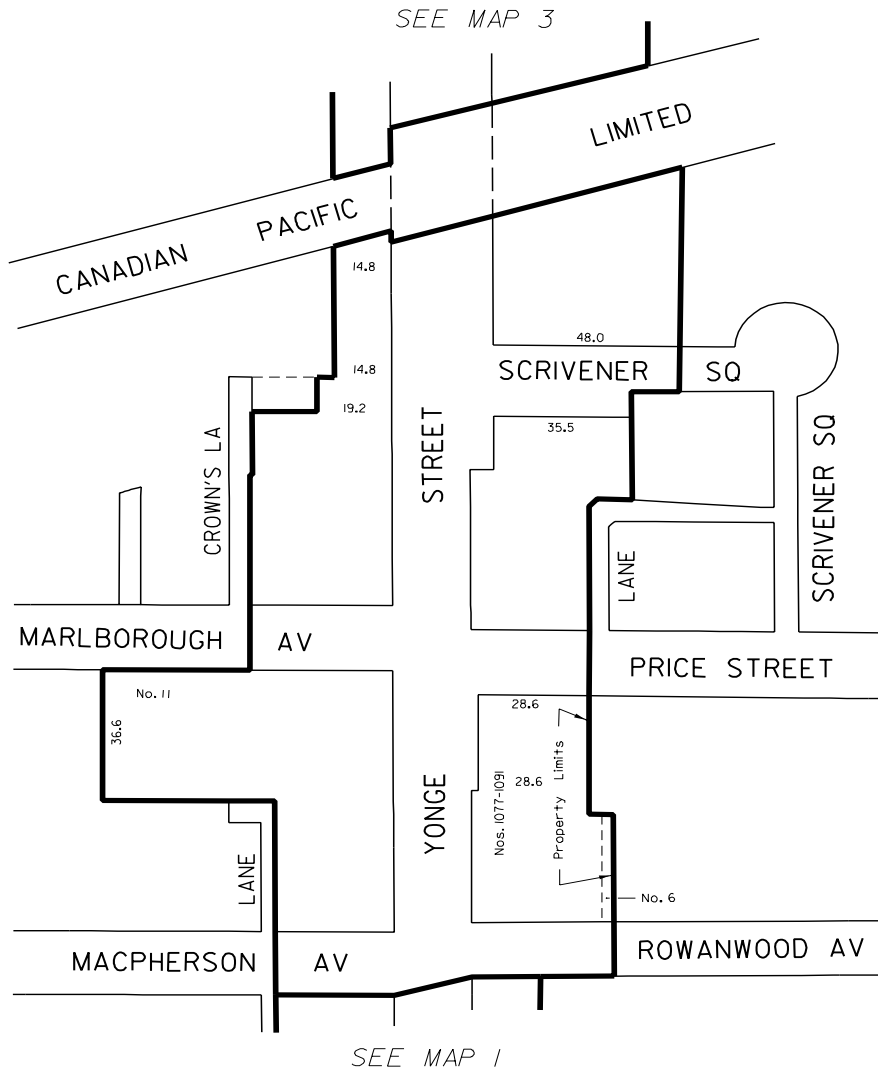
DAVID R. MILLER,
Mayor

ULLI S. WATKISS
City Clerk

(Corporate Seal)

SCHEDULE A

MAP 2 of 3



ROSEDALE MAIN STREET
BUSINESS IMPROVEMENT AREA

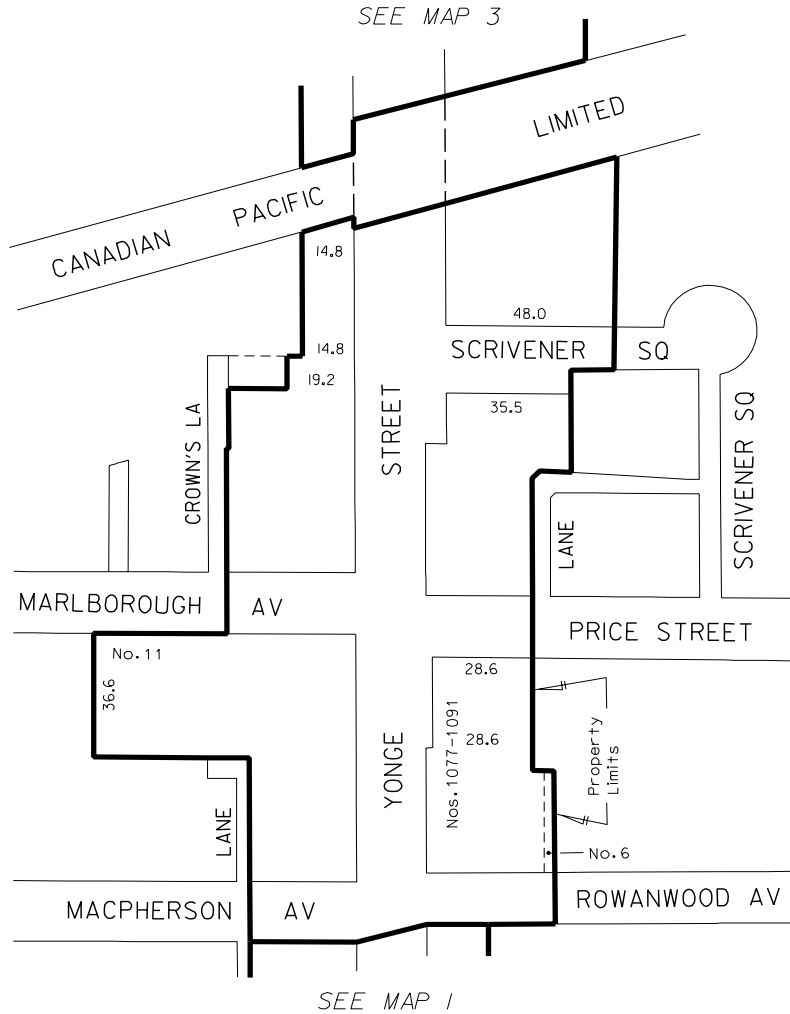


SURVEY AND MAPPING SERVICES
TORONTO JULY 2006
BIA06/ROSEDALE_BI2.DGN
FILES: Y1-IMP6_205 DRAWN: WS
MAP Nos. 50J-323, 51J-321

SCHEDULE B

Chapter 19

SCHEDULE A
ROSEDALE MAIN STREET
BUSINESS IMPROVEMENT AREA
Map 2 of 3



SURVEY AND MAPPING SERVICES
 TORONTO JULY 2006
 BIA06/ROSEDALE_MC2.DGN
 FILES: Y1-1MP7, 205
 MAP Nos. 50J-23, 51J-21