

Authority: Toronto and East York Community Council Item 8.4,  
as adopted by City of Toronto Council on September 26 and 27, 2007  
Enacted by Council: January 30, 2008

**CITY OF TORONTO**

**BY-LAW No. 74-2008**

**To designate the property at 703 Dovercourt Road (Centennial Japanese Church) as being of cultural heritage value or interest.**

WHEREAS authority was granted by Council to designate the property at 703 Dovercourt Road (Centennial Japanese Church) as being of cultural heritage value or interest; and

WHEREAS the *Ontario Heritage Act* authorizes the Council of a municipality to enact by-laws to designate real property, including all the buildings and structures thereon, to be of cultural heritage value or interest; and

WHEREAS the Council of the City of Toronto has caused to be served upon the owners of the land and premises known as 703 Dovercourt Road and upon the Ontario Heritage Trust, Notice of Intention to designate the property and has caused notice of this by-law to be posted on the City's web site for a period of 30 days in accordance with Municipal Code Chapter 162, Notice, Public, Article II, § 162-4, Notice requirements under the *Ontario Heritage Act*; and

WHEREAS the reasons for designation are set out in Schedule "A" to this by-law; and

WHEREAS no notice of objection was served upon the Clerk of the municipality;

The Council of the City of Toronto HEREBY ENACTS as follows:

1. The property located at 703 Dovercourt Road, more particularly described in Schedule "B" and shown on Schedule "C" attached to this by-law, is designated as being of cultural heritage value or interest.
2. The City Solicitor is authorized to cause a copy of this by-law to be registered against the property described in Schedule "B" to this by-law in the proper Land Registry Office.
3. The City Clerk is authorized to cause a copy of this by-law to be served upon the owners of the property at 703 Dovercourt Road and upon the Ontario Heritage Trust and to cause notice of this by-law to be posted on the City's web site for a period of 30 days in accordance with Municipal Code Chapter 162, Notice, Public, Article II, § 162-4, Notice requirements under the *Ontario Heritage Act*.

ENACTED AND PASSED this 30th day of January, A.D. 2008.

SANDRA BUSSIN,  
Speaker

ULLI S. WATKISS  
City Clerk

(Corporate Seal)

## **SCHEDULE “A”**

### **REASONS FOR DESIGNATION**

#### Description

The property at 703 Dovercourt Road is worthy of designation under Part IV of the *Ontario Heritage Act* for its cultural heritage value or interest, and meets the criteria for municipal designation prescribed by the Province of Ontario under the three categories of design, historical and contextual value. The church is located on the east side of Dovercourt Road, south of Bloor Street West, where historical records indicate it was constructed in 1906. The property was included on the City of Toronto Inventory of Heritage Properties in 2004.

#### Statement of Cultural Heritage Value

Centennial Japanese Church has design or physical value as a representative example of an early 20th century church with elements drawn from the Neo Gothic style. Popularized in the early 1900s for educational and ecclesiastical architecture, the style was characterized by Tudor-arched openings and detailing inspired by the medieval period. Centennial Japanese Church is distinguished by the treatment of its principal (west) façade where twin towers are surmounted by pyramidal steeples.

Historically, the church is an institution of importance in the Dovercourt neighbourhood. The present building replaces the original Centennial Methodist Church, dating to 1891 and constructed on the same site. In 1925, the church was renamed Centennial United Church, following the creation of the United Church of Canada from an amalgamation of Methodist, Congregational and many Presbyterian churches. In 1986, Centennial United Church joined with the Nisei congregation of the Toronto Japanese Church to form Centennial Japanese Church.

Centennial Japanese Church is a local landmark on Dovercourt Road, south of Bloor Street West, where is a visible presence as an institutional building with Neo-Gothic detailing. In the vicinity, Dovercourt-St. Paul’s Presbyterian Church (1905) at 700 Dovercourt Road and the Anglican Church of St. Mary the Virgin and St. Cyprian (1913) at 42 Westmoreland Avenue are also recognized on the City’s heritage inventory.

#### Heritage Attributes

The heritage attributes of Centennial Japanese Church related to its design value as a representative example of an early 20th century church with Neo-Gothic detailing are found on the exterior walls and roof, excluding the rear (east) wall and consisting of:

- The plan that rises one extended storey from a raised base with brick and stone facing and flat-headed window openings.
- The red brick cladding with stone applied for the trim on the doors, windows and towers.
- The low-pitched gable roof with twin towers on the southwest and northwest corners and an octagonal skylight near the centre.

- The symmetrical organization of the principal (west) façade, with a central frontispiece between towers containing entrances.
- The central frontispiece on the west facade, with a stepped triangular parapet with stone coping that is flanked by buttresses and incorporates a trio of Tudor-arched window openings with stone applied for a continuous sill, hood moulds, spandrels, and a nameplate.
- The square towers, where stone is applied for the cornices, band courses, and coping along the top of the battlements, which incorporate arcades and provide the bases for pyramidal steeples.
- The placement of an entrance at the base of each tower, where a stepped triangular frontispiece with stone coping and buttresses contains a Tudor-arched stone surround with a hood mould, quoins and a multi-paned transom.
- Above the entries on each tower, the diminutive flat-headed window openings with stone sills and hood moulds, which are repeated on the side walls (north and south) of the towers.
- Near the top of each tower, the inset of stone-trimmed Tudor-arched window openings flanked by buttresses.
- The side elevations (north and south) of the church, which are identical and placed under the gable ends of the roof where each wall is flanked by buttresses and incorporates a trio of narrow Tudor-arched window openings with stone trim.
- The datestone for the original church, placed at ground level on near the west corner of the south wall and reading “Centennial Methodist Church, erected A. D. 1891”.

The rear (east) wall and extension are not included in the Reasons for Designation.

**SCHEDULE “B”**

PIN 21282-0050 (LT)

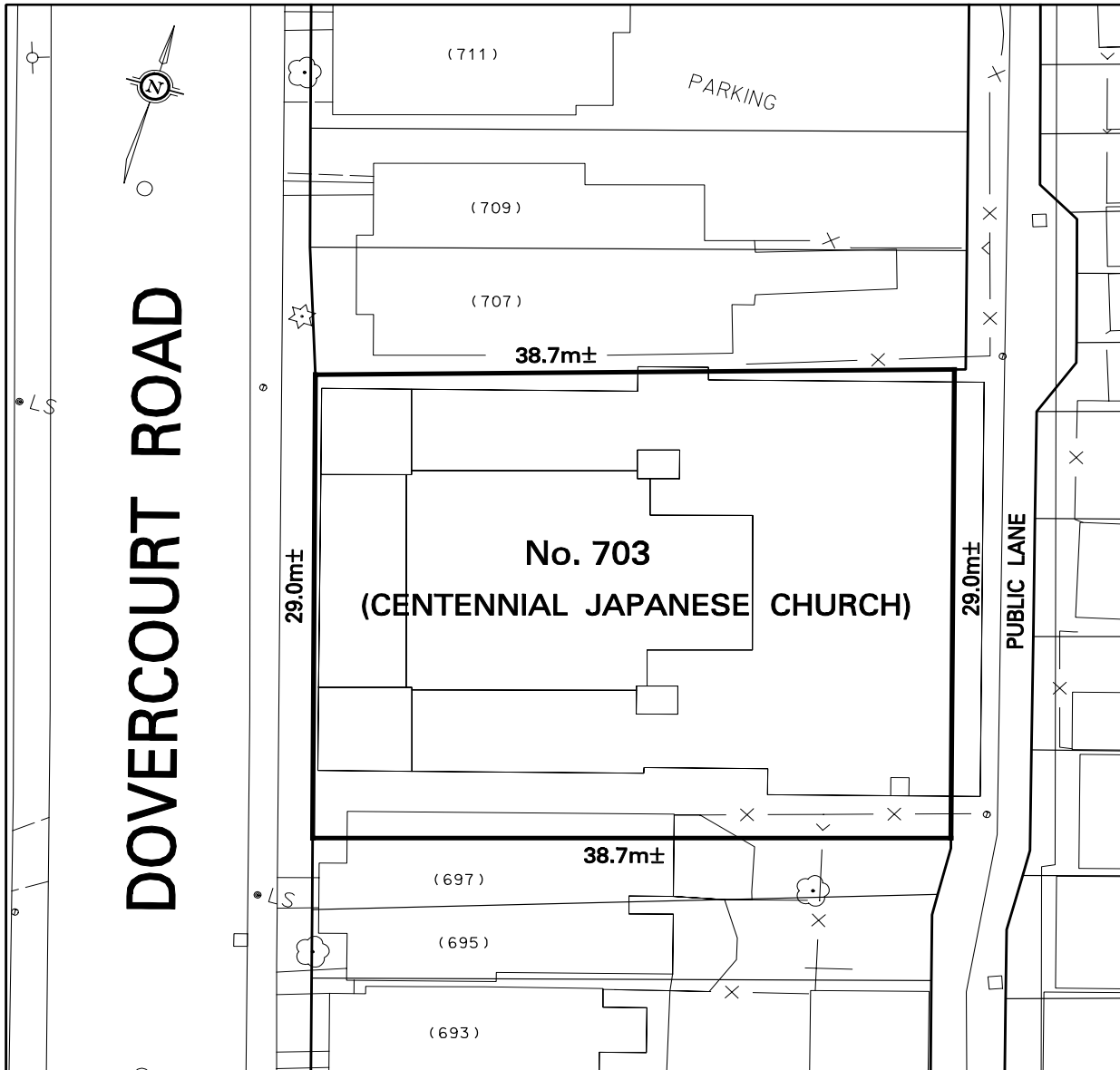
PT LT 13-16 BLK T PL 329 CITY WEST AS IN CT831619

City of Toronto and Province of Ontario

Land Titles Division of the Toronto Registry Office (No. 66)

The hereinbefore described land being delineated by heavy outline on Sketch No. PS-2007-307a dated January 16, 2008, as set out in Schedule “C”.

SCHEDULE "C"



**Toronto**

TECHNICAL SERVICES DIVISION  
SURVEY & MAPPING SERVICES

NOTE:  
THIS SKETCH IS NOT  
A PLAN OF SURVEY  
AND HAS BEEN COMPILED  
FROM SURVEY NOTES AND  
OFFICE RECORDS, IT SHALL  
NOT BE USED EXCEPT FOR  
THE PURPOSE INDICATED  
IN THE TITLE BLOCK

PROPERTY INFORMATION SHEET

No 703 DOVERCOURT ROAD  
(CENTENNIAL JAPANESE CHURCH)  
LAND DESIGNATED AS BEING OF  
CULTURAL HERITAGE VALUE AND INTEREST

(NOT TO SCALE)

WARD 19 - TRINITY-SPADINA  
DATE: JAN. 16, 2008

SKETCH No. PS-2007-307a