

CITY OF TORONTO

BY-LAW No. 86-2010(OMB)

**To amend former City of Scarborough Wexford Community Zoning By-law No. 9511,
as amended, with respect to the lands municipally known as 20 Courton Drive.**

WHEREAS the Ontario Municipal Board, pursuant to its Order issued on February 8, 2008, upon hearing the appeal of the owner under Section 34(11) of the *Planning Act*, deems it advisable to amend By-law No. 9511, the Wexford Community By-law, of the former City of Scarborough;

THEREFORE By-law No. 9511, as amended, of the former City of Scarborough is further amended as follows:

1. Schedule 'C' of the Wexford Community Zoning By-law No. 9511, **EXCEPTIONS LIST**, is amended by adding the following Exception No. 60:

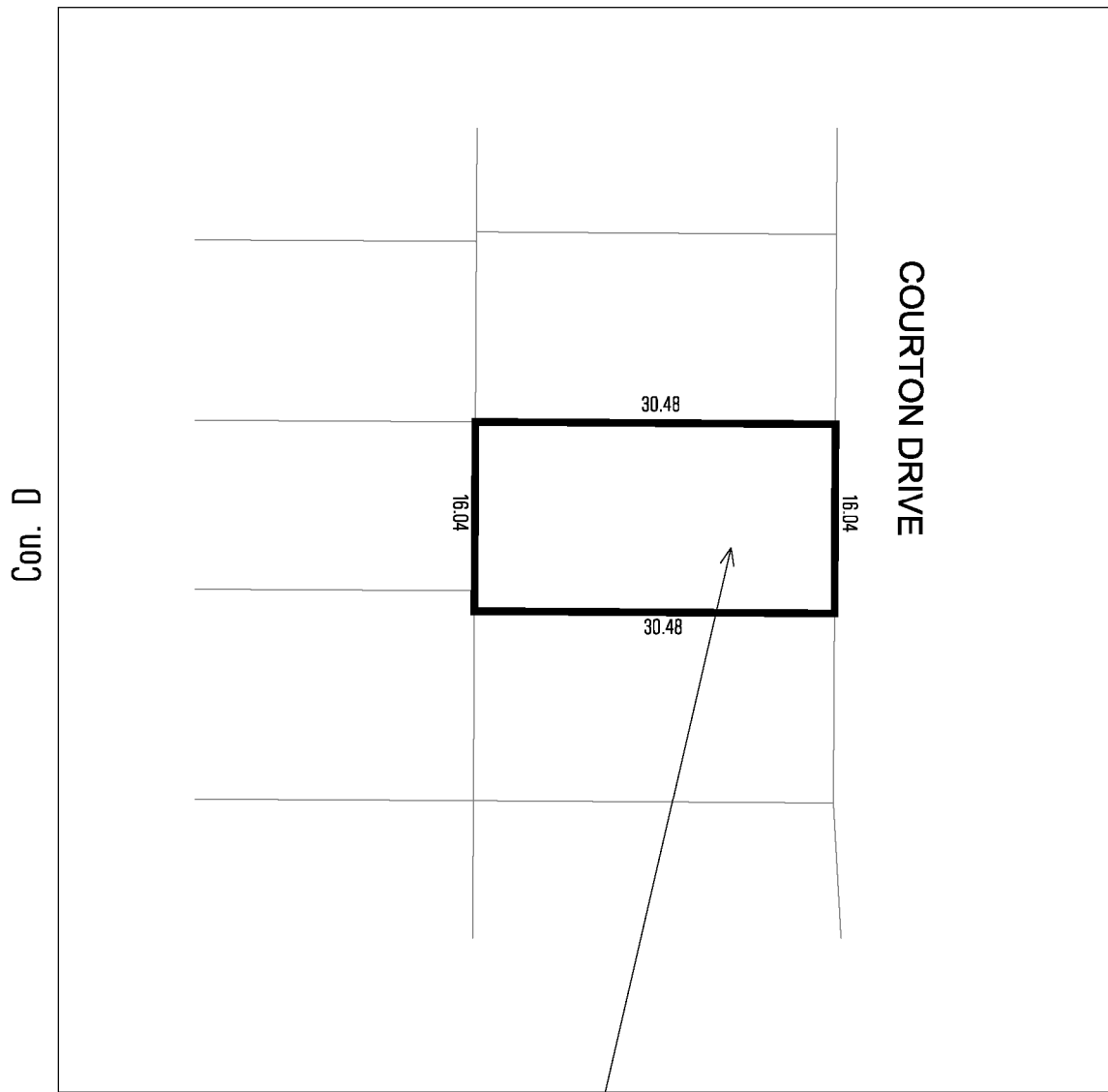
60. On those lands identified as Exception No. 60 on the accompanying Schedule 'C' map, the following provision shall apply:

Notwithstanding Section 2.1.4 Garages, Carports and Accessory Buildings (e) (i), one of the maximum dimensions of a detached garage may be 10.2 metres.

PURSUANT TO THE DECISION/ORDER OF THE ONTARIO MUNICIPAL BOARD
ISSUED ON FEBRUARY 8, 2008 IN BOARD CASE NO. PL070530.

Schedule 'C'

Lot 34



Exception No. 60

 **Toronto** City Planning
Division
Zoning By-Law Amendment

20 Courton Drive
File # 06-129697 TM

 Area Affected By This By-Law

Wexford Community Bylaw
Not to Scale
9/25/07
