

Authority: Parks and Environment Committee Item 17.2,
as adopted by City of Toronto Council on November 27, 28 and 29, 2012

CITY OF TORONTO

BY-LAW No. 435-2013

**To provide for an integrated pest management system to control
European Gypsy Moth infestation.**

Whereas the presence of European Gypsy Moth populations in certain areas of the City has reached outbreak levels; and

Whereas in the interest of preserving the environmental well-being of the City it is necessary to implement control measures in order to prevent further tree loss and defoliation and to preserve the tree canopy;

The Council of the City of Toronto enacts:

1. The General Manager, Parks Forestry and Recreation is authorized to implement an integrated pest management program to control European Gypsy Moth infestation including:
 - A. Aerial spraying of the biological control agent bacillus thuringiensis subspecies kurstaki (BTK) in wards 2, 3, 4, 5, 27 and 30 in those areas identified on the maps attached as Schedules "A" and "B" to this by-law;
 - B. Ground based spraying of BTK or tree injection with TreeAzin on selected individual trees in wards 2, 4, 7, 9, 12, 13, 15, 23, 25, 36 and 41 in those areas identified on the maps attached as Schedules "A" and "B" to this by-law; and
 - C. Mechanical egg mass removal in wards 2, 4, 9, 12, 13, 14, 15, 16, 23, 25, 36, 38, 40, 41 and 43, in those areas identified on the maps attached as Schedules "A" and "B" to this by-law.

Enacted and passed on March 21, 2013.

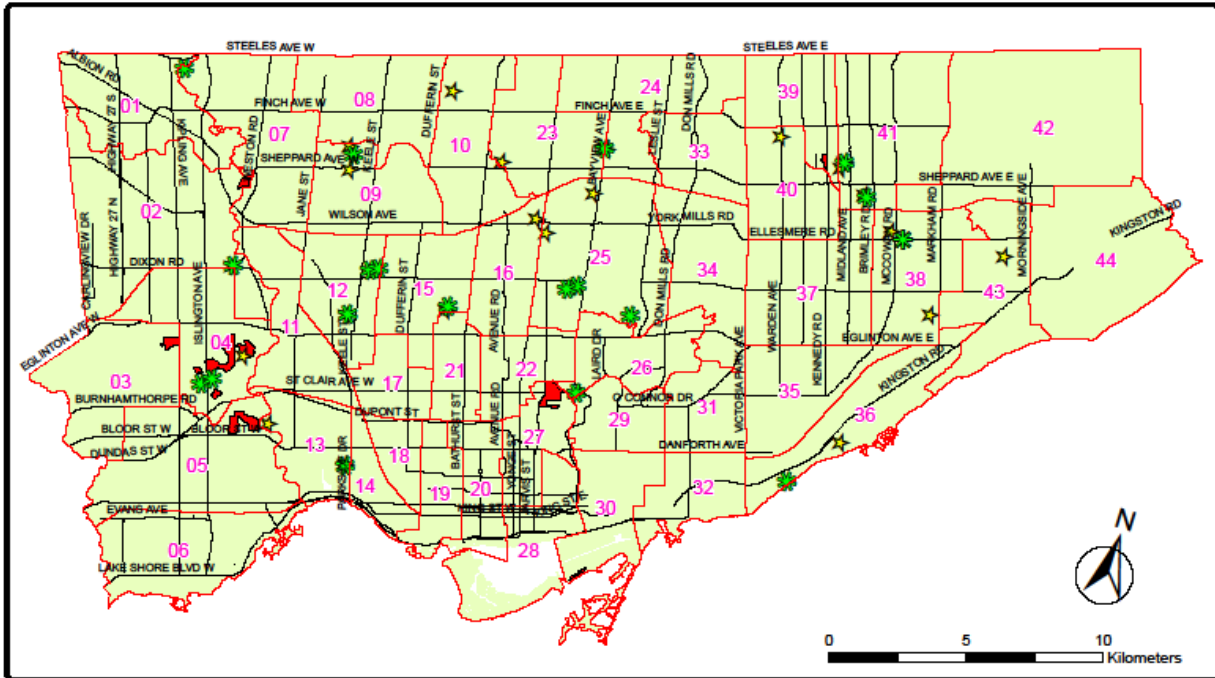
Frances Nunziata,
Speaker

Ulli S. Watkiss,
City Clerk

(Seal of the City)

SCHEDULE "A"

2013 Gypsy Moth Management Plan: City Wide



Toronto Parks, Forestry & Recreation

Urban Forestry:
Forest Health Care
18 Dwyer Rd, 1st Floor
Toronto, ON M5S 1V5
Tel: (416) 392-1435
Fax: (416) 392-1915

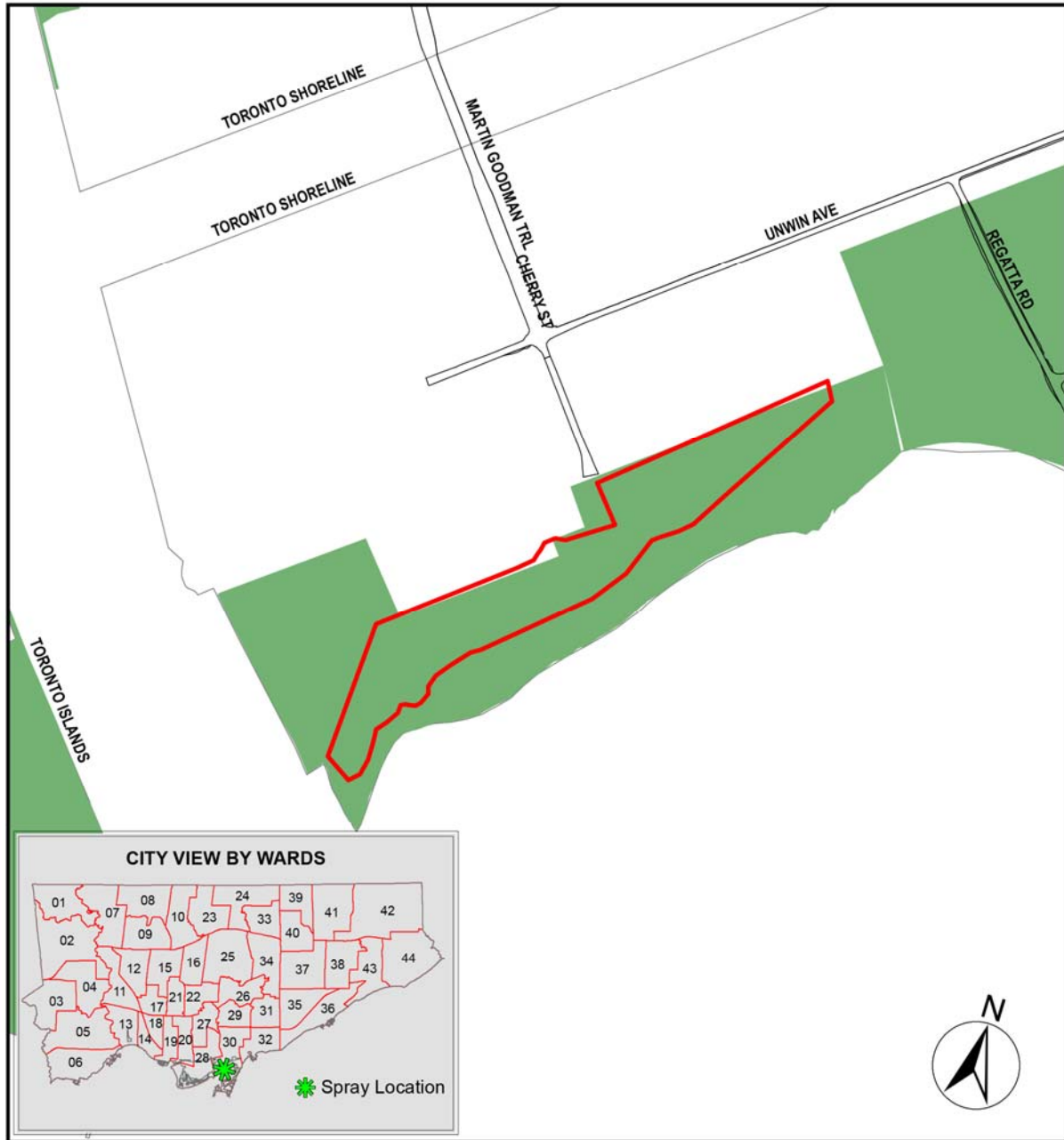
THE INFORMATION HEREON HAS BEEN COMPILED FOR GENERAL PLANNING PURPOSES ONLY. NO ONE MAY COPY, REPRODUCE, DISTRIBUTE OR ALTER THIS MAP WITHOUT THE WRITTEN PERMISSION OF THE CITY OF TORONTO.
© Copyright City of Toronto

DATA SOURCE:
BASE MAP - TQMITS
SPRAY LOCATIONS - URBAN FORESTRY, 020013

- LEGEND**
- WARD BOUNDARY
 - ✱ GROUND SPRAY APPLICATION / INJECTION SITES
 - ★ GM_2D13EMLocationsfinal
 - AERIAL SPRAY ZONES

SCHEDULE "B" 2013 European Gypsy Moth Spray Locations

2013 Gypsy Moth Spray Locations: Cherry Beach Park



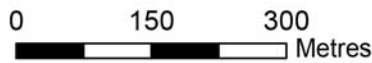
TORONTO Parks, Forestry & Recreation

Urban Forestry:
Forest Health Care
18 Dyas Rd, 1st Floor
Toronto, ON M3B 1V5
Tel (416)392-1438
Fax (416) 392-1915

THE INFORMATION HEREON HAS BEEN COMPILED FOR GENERAL PLANNING PURPOSES ONLY.

NO ONE MAY COPY, REPRODUCE, DISTRIBUTE OR ALTER THIS MAP WITHOUT THE WRITTEN PERMISSION OF THE CITY OF TORONTO.

© Copyright City of Toronto

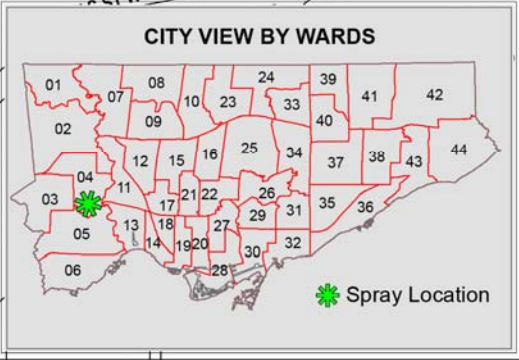
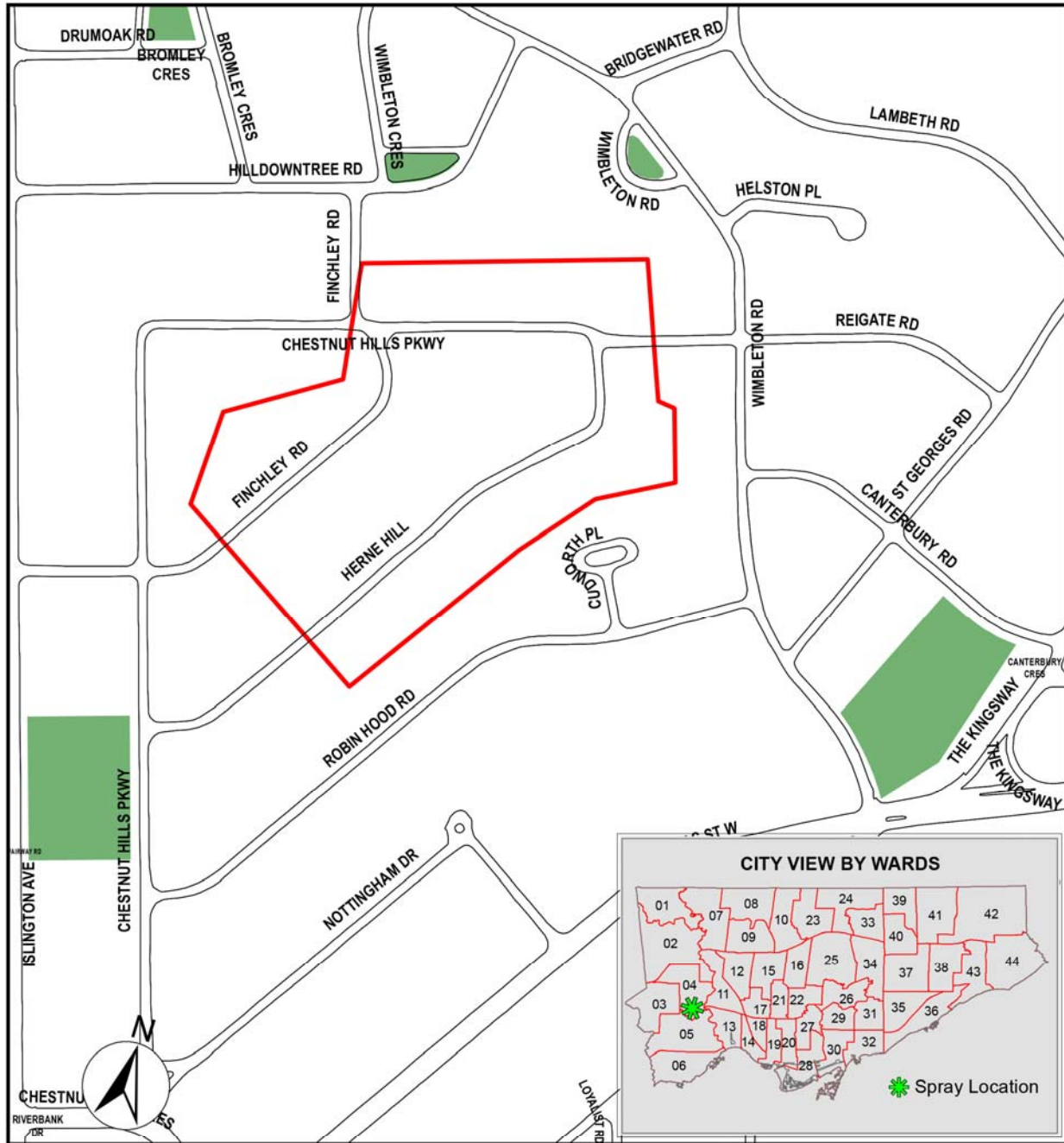


DATA SOURCE:
BASE MAP - TORONTO STREET CENTRELINE,
SPRAY LOCATIONS - URBAN FORESTRY, 02/2013

LEGEND

-  SPRAY AREA
-  PARK
-  STREET CURB

2013 Gypsy Moth Spray Locations: Herne Hill



Toronto Parks, Forestry & Recreation

Urban Forestry:
Forest Health Care
18 Dyas Rd, 1st Floor
Toronto, ON M3B 1V5
Tel (416)392-1436
Fax (416) 392-1915

THE INFORMATION HEREON HAS BEEN COMPILED FOR GENERAL PLANNING PURPOSES ONLY.
NO ONE MAY COPY, REPRODUCE, DISTRIBUTE OR ALTER THIS MAP WITHOUT THE WRITTEN PERMISSION OF THE CITY OF TORONTO.
© Copyright City of Toronto

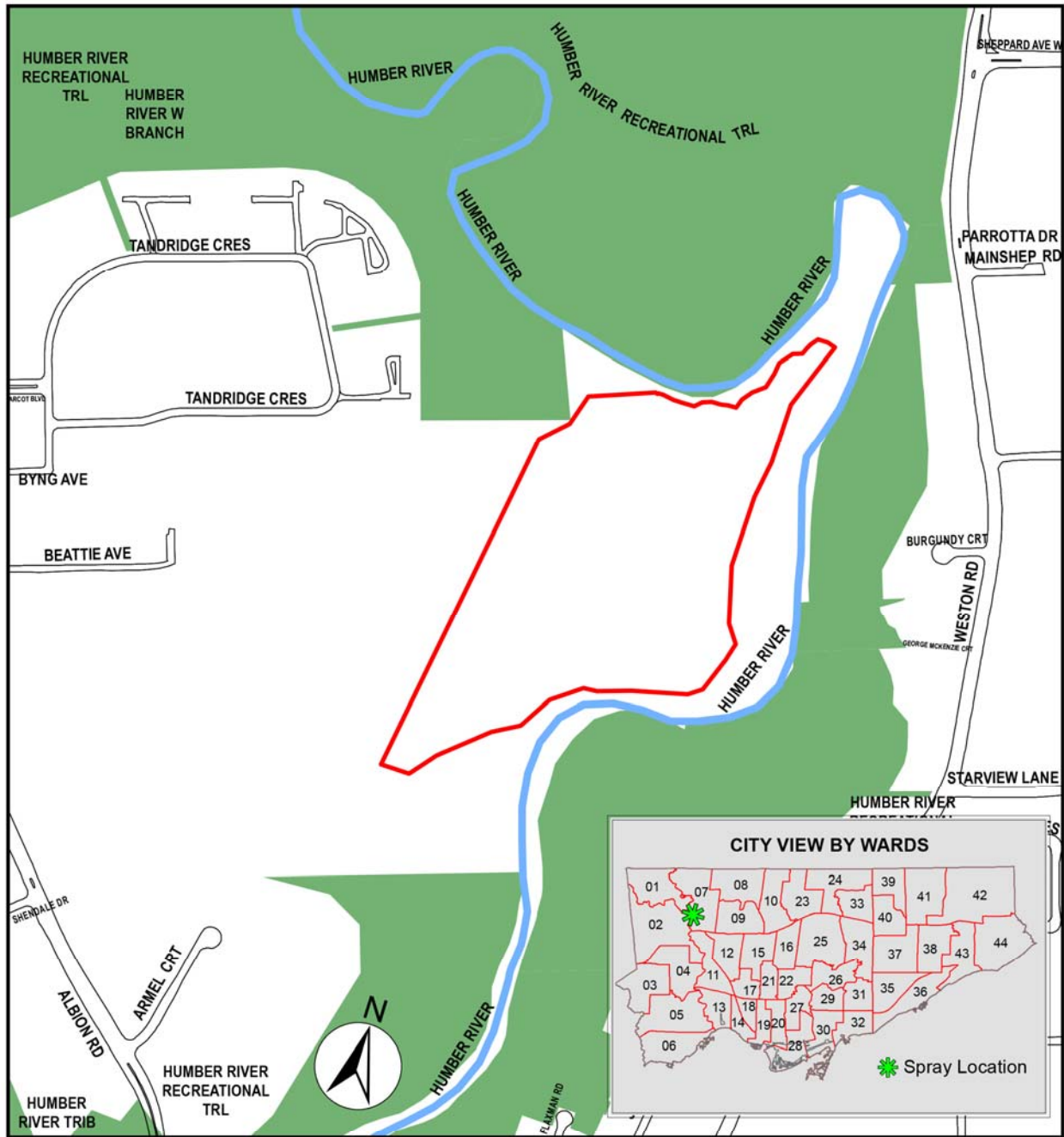


DATA SOURCE:
BASE MAP - TORONTO STREET CENTRELINE,
SPRAY LOCATIONS - URBAN FORESTRY, 02/2013

LEGEND

- SPRAY AREA
- PARK
- STREET CURB

2013 Gypsy Moth Spray Locations: Humber Valley Golf Course



TORONTO Parks, Forestry & Recreation

Urban Forestry:
Forest Health Care
18 Dyas Rd, 1st Floor
Toronto, ON M3B 1V5
Tel (416) 392-1436
Fax (416) 392-1915

THE INFORMATION HEREON HAS BEEN COMPILED FOR GENERAL PLANNING PURPOSES ONLY.

NO ONE MAY COPY, REPRODUCE, DISTRIBUTE OR ALTER THIS MAP WITHOUT THE WRITTEN PERMISSION OF THE CITY OF TORONTO.

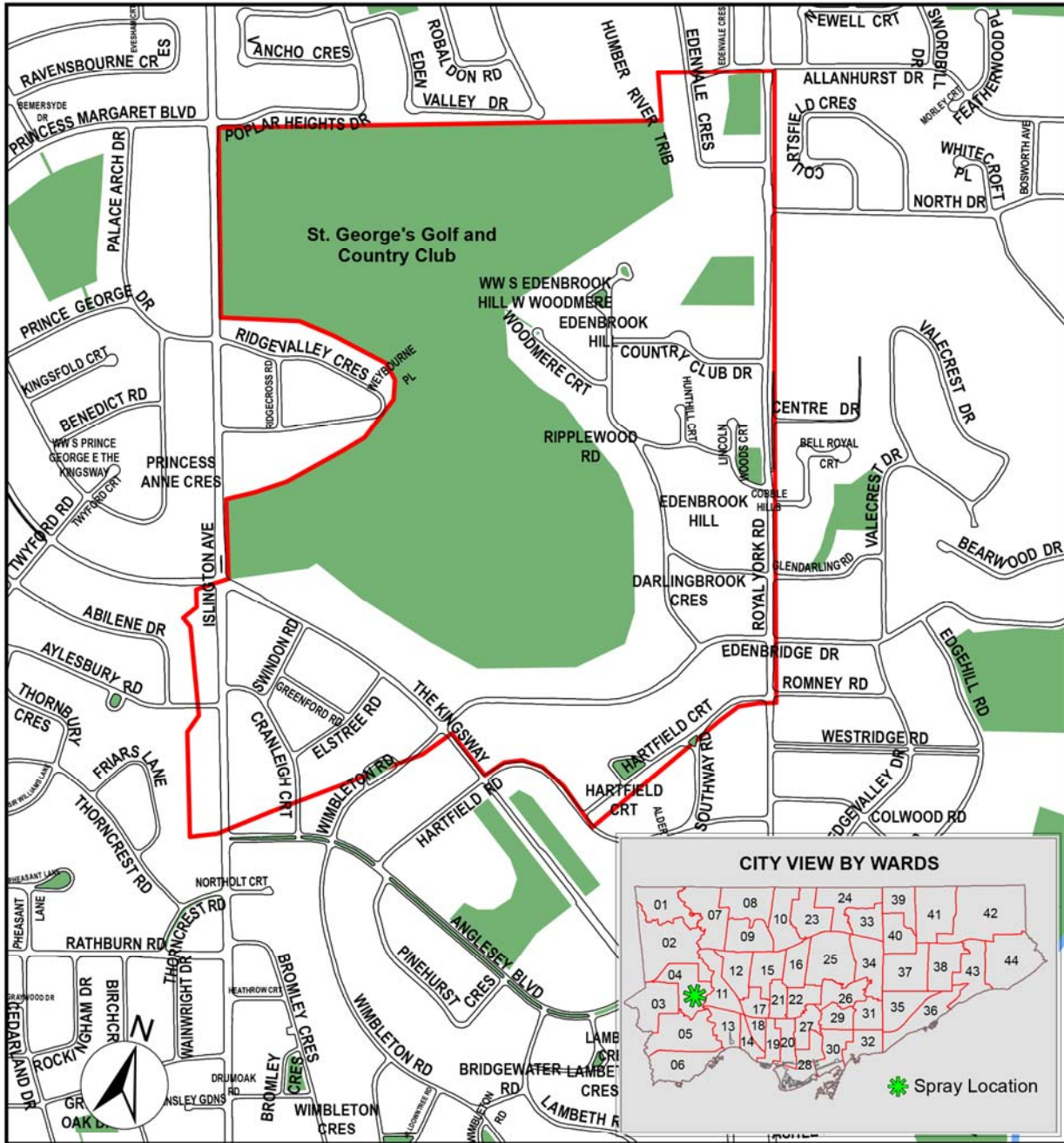
© Copyright City of Toronto



DATA SOURCE:
BASE MAP - TORONTO STREET CENTRELINE,
SPRAY LOCATIONS - URBAN FORESTRY, 02/2013



**2013 Gypsy Moth Spray Locations:
The Kingsway & Edenbridge Dr.**



Note: St. George's Golf And Country Club is to be included in the spray area.



Urban Forestry:
Forest Health Care
16 Dyas Rd, 1st Floor
Toronto, ON M3B 1V5
Tel (416)392-1436
Fax (416) 392-1915

THE INFORMATION HEREON HAS BEEN COMPILED FOR GENERAL PLANNING PURPOSES ONLY.

NO ONE MAY COPY, REPRODUCE, DISTRIBUTE OR ALTER THIS MAP WITHOUT THE WRITTEN PERMISSION OF THE CITY OF TORONTO.

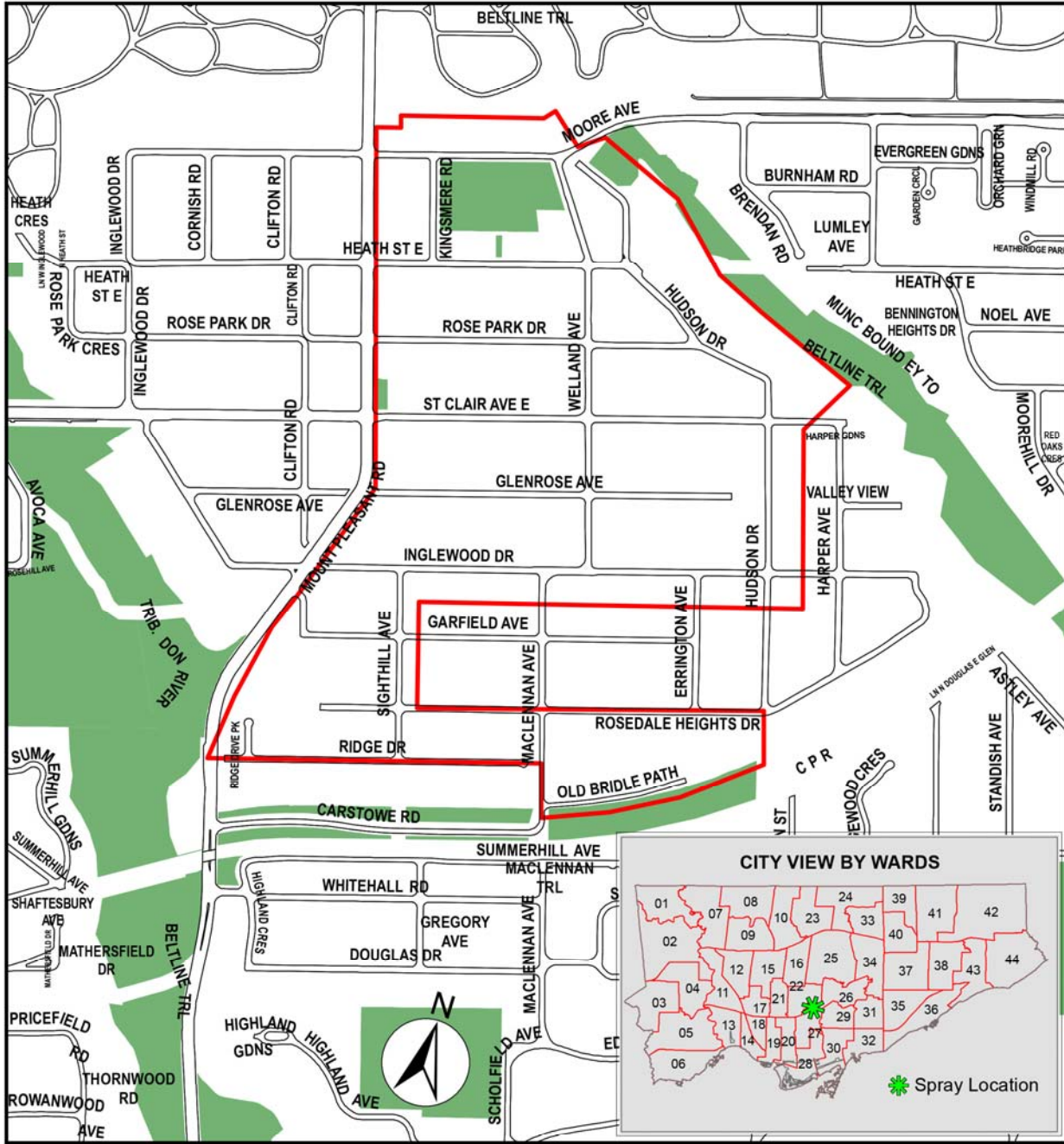
© Copyright City of Toronto



DATA SOURCE:
BASE MAP - TORONTO STREET CENTRELINE,
SPRAY LOCATIONS - URBAN FORESTRY, 02/2013



2013 Gypsy Moth Spray Locations: Moore Park

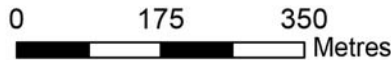


Urban Forestry:
 Forest Health Care
 18 Dyas Rd, 1st Floor
 Toronto, ON M3B 1V5
 Tel (416) 392-1436
 Fax (416) 392-1915

THE INFORMATION HEREON HAS BEEN COMPILED FOR GENERAL PLANNING PURPOSES ONLY.

NO ONE MAY COPY, REPRODUCE, DISTRIBUTE OR ALTER THIS MAP WITHOUT THE WRITTEN PERMISSION OF THE CITY OF TORONTO.

© Copyright City of Toronto

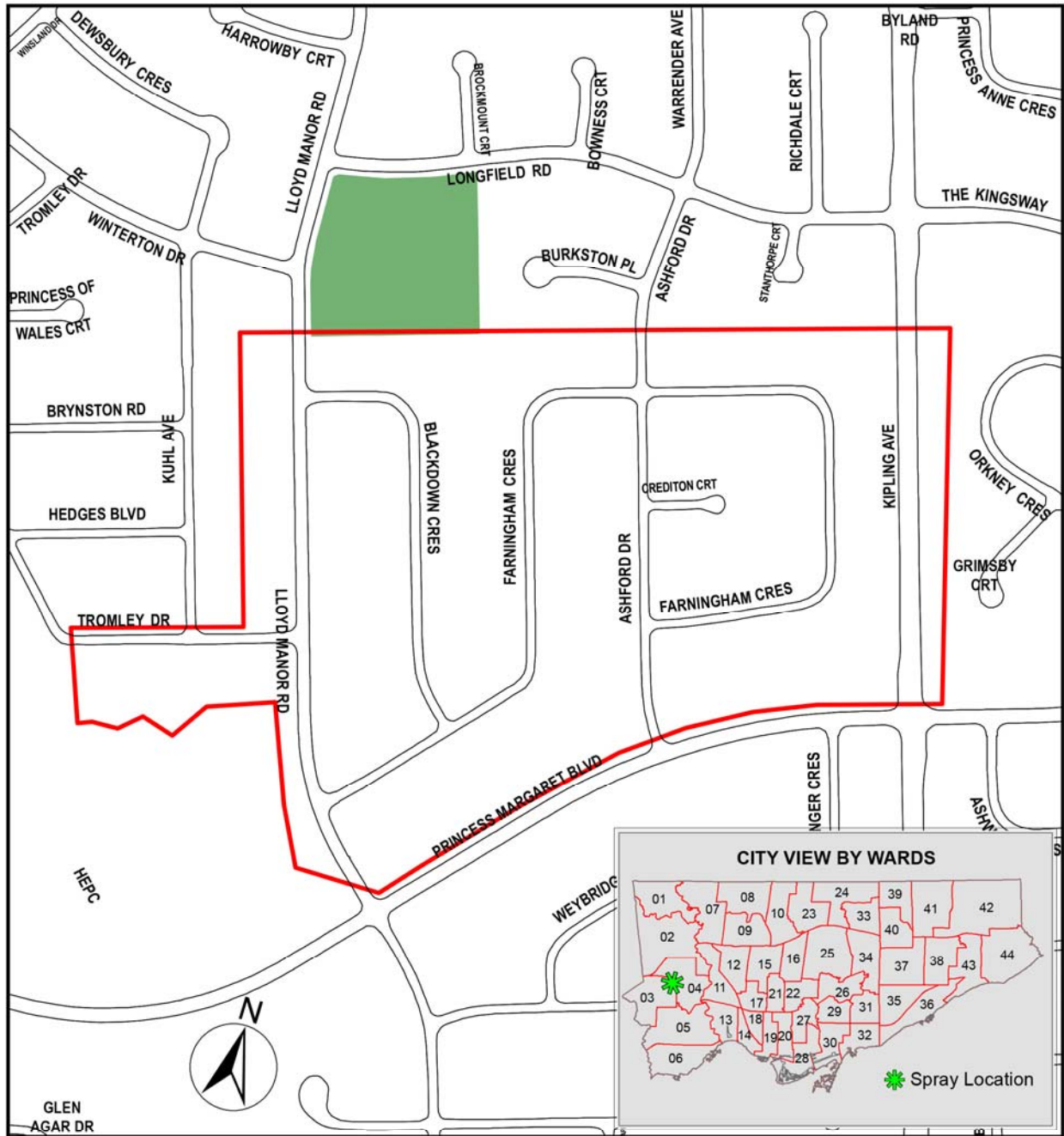


DATA SOURCE:
 BASE MAP - TORONTO STREET CENTRELINE,
 SPRAY LOCATIONS - URBAN FORESTRY, 02/2013

LEGEND

- SPRAY AREA
- PARK
- STREET CURB

2013 Gypsy Moth Spray Locations: Princess Margaret Blvd & Kipling Ave



Toronto Parks, Forestry & Recreation

Urban Forestry:
Forest Health Care
18 Dyas Rd, 1st Floor
Toronto, ON M3B 1V5
Tel (416)392-1436
Fax (416) 392-1915

THE INFORMATION HEREON HAS BEEN COMPILED FOR GENERAL PLANNING PURPOSES ONLY.

NO ONE MAY COPY, REPRODUCE, DISTRIBUTE OR ALTER THIS MAP WITHOUT THE WRITTEN PERMISSION OF THE CITY OF TORONTO.

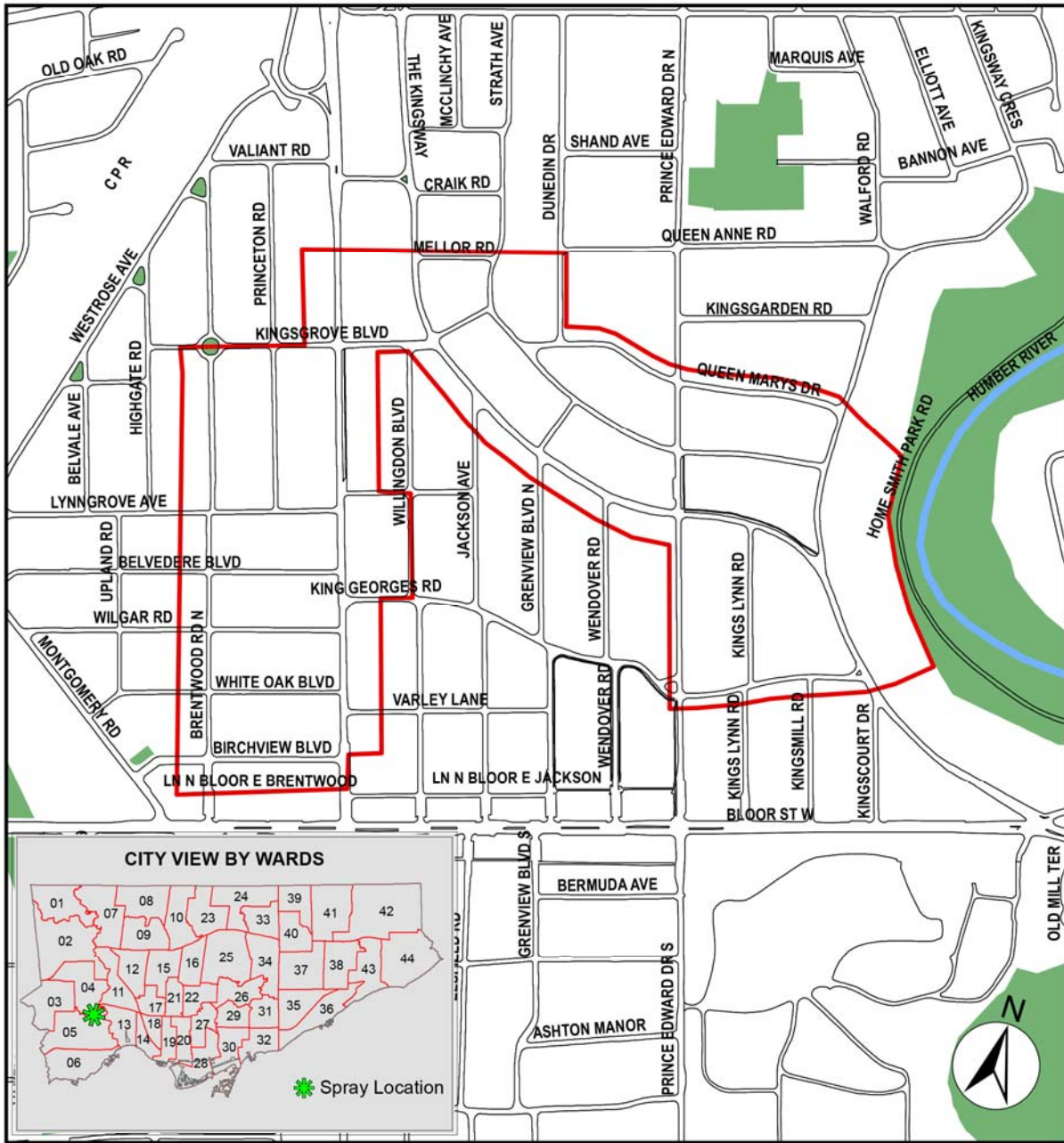
© Copyright City of Toronto



DATA SOURCE:
BASE MAP - TORONTO STREET CENTRELINE,
SPRAY LOCATIONS - URBAN FORESTRY, 02/2013



**2013 Gypsy Moth Spray Locations:
Royal York Road & The Kingsway**



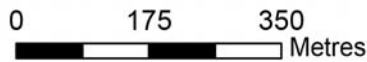
TORONTO Parks, Forestry & Recreation

Urban Forestry:
Forest Health Care
18 Dyas Rd, 1st Floor
Toronto, ON M3B 1V5
Tel (416) 392-1436
Fax (416) 392-1915

THE INFORMATION HEREON HAS BEEN COMPILED FOR GENERAL PLANNING PURPOSES ONLY.

NO ONE MAY COPY, REPRODUCE, DISTRIBUTE OR ALTER THIS MAP WITHOUT THE WRITTEN PERMISSION OF THE CITY OF TORONTO.

© Copyright City of Toronto

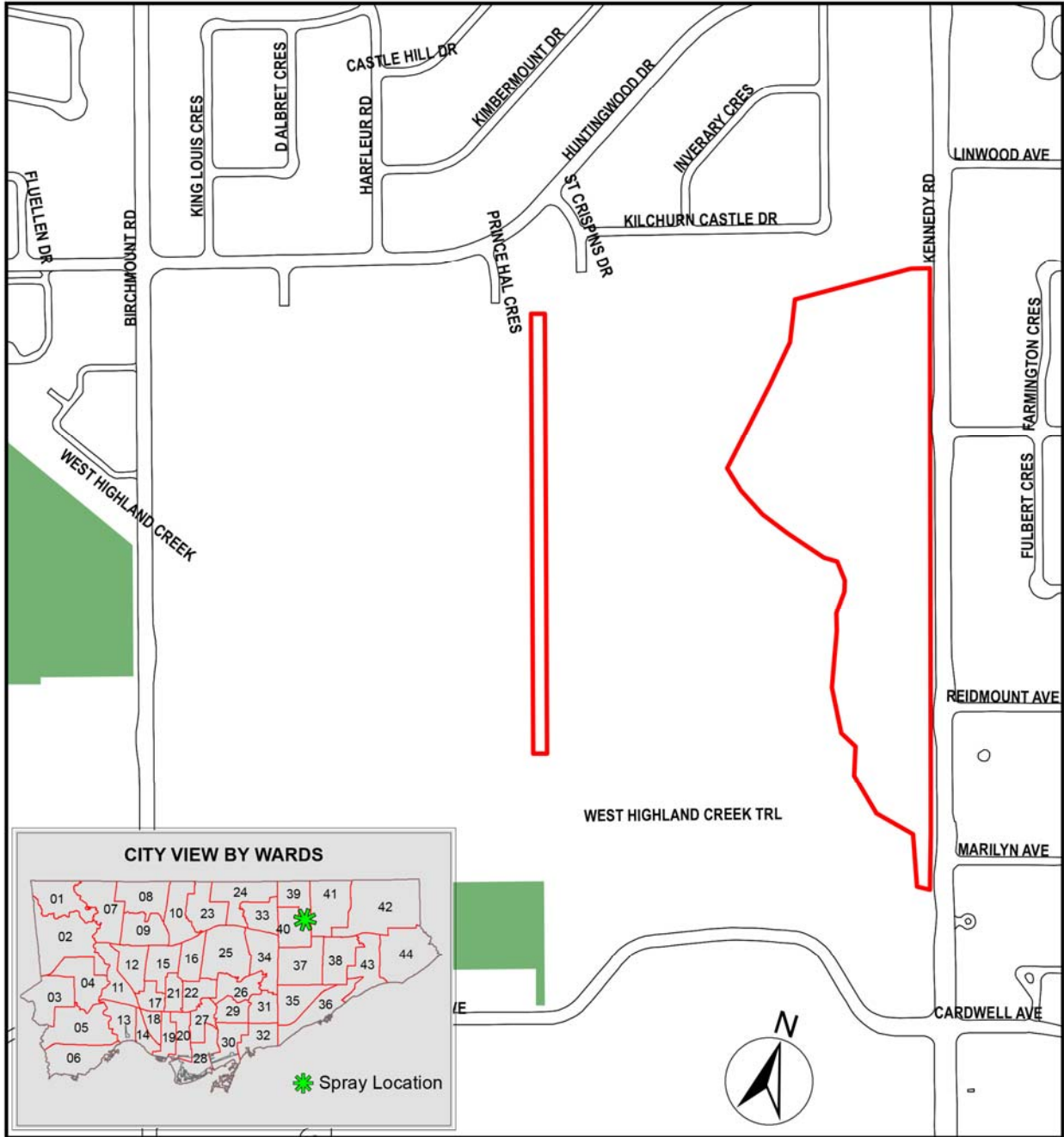


DATA SOURCE:
BASE MAP - TORONTO STREET CENTRELINE,
SPRAY LOCATIONS - URBAN FORESTRY, 02/2013

LEGEND

- SPRAY AREA
- PARK
- STREET CURB

2013 Gypsy Moth Spray Locations: Tam O'Shanter Golf Course



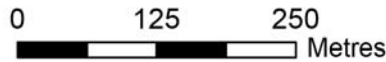
Toronto Parks, Forestry & Recreation

Urban Forestry:
 Forest Health Care
 18 Dyas Rd, 1st Floor
 Toronto, ON M3B 1V5
 Tel (416) 392-1436
 Fax (416) 392-1915

THE INFORMATION HEREON HAS BEEN COMPILED FOR GENERAL PLANNING PURPOSES ONLY.

NO ONE MAY COPY, REPRODUCE, DISTRIBUTE OR ALTER THIS MAP WITHOUT THE WRITTEN PERMISSION OF THE CITY OF TORONTO.

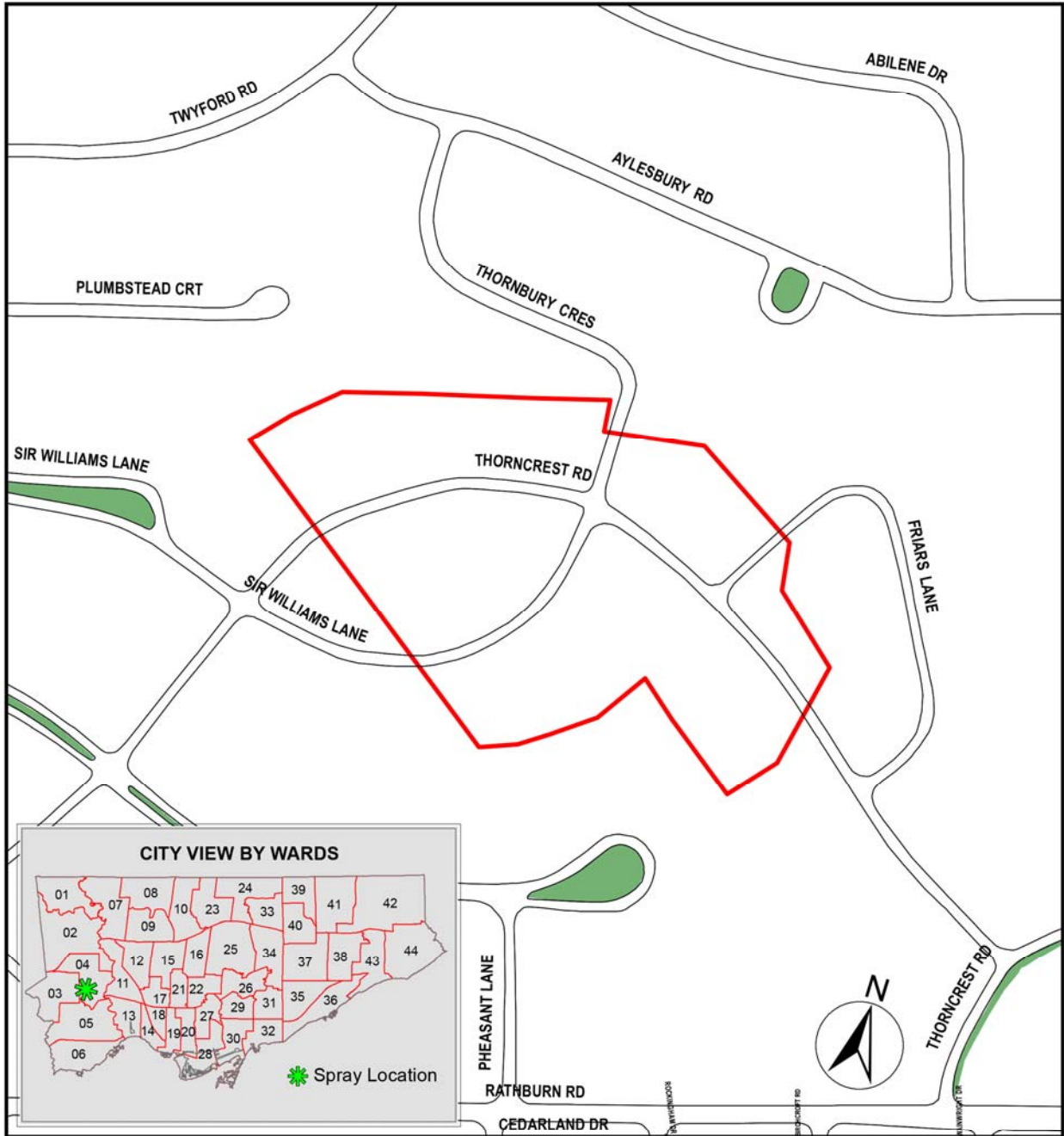
© Copyright City of Toronto



DATA SOURCE:
 BASE MAP - TORONTO STREET CENTRELINE,
 SPRAY LOCATIONS - URBAN FORESTRY, 02/2013

LEGEND	
	SPRAY AREA
	PARK
	STREET CURB

2013 Gypsy Moth Spray Locations: Thorncrest Road



Toronto Parks, Forestry & Recreation

Urban Forestry:
 Forest Health Care
 18 Dyas Rd, 1st Floor
 Toronto, ON M3B 1V5
 Tel (416) 392-1436
 Fax (416) 392-1915

THE INFORMATION HEREON HAS BEEN COMPILED FOR GENERAL PLANNING PURPOSES ONLY.

NO ONE MAY COPY, REPRODUCE, DISTRIBUTE OR ALTER THIS MAP WITHOUT THE WRITTEN PERMISSION OF THE CITY OF TORONTO.

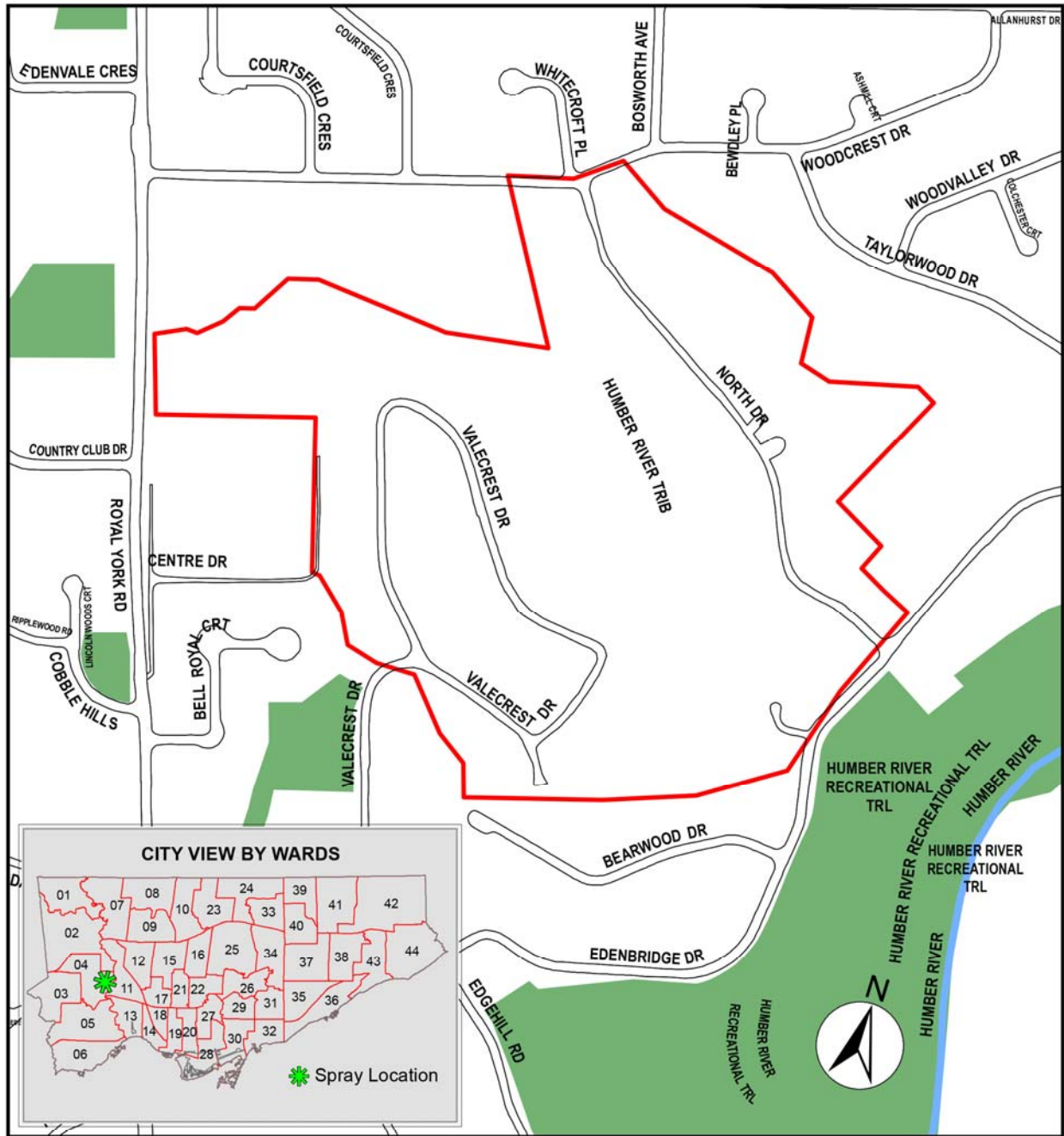
© Copyright City of Toronto



DATA SOURCE:
 BASE MAP - TORONTO STREET CENTRELINE,
 SPRAY LOCATIONS - URBAN FORESTRY, 02/2013



2013 Gypsy Moth Spray Locations: Valecrest Road & North Drive



Toronto Parks, Forestry & Recreation

Urban Forestry:
Forest Health Care
18 Dyas Rd, 1st Floor
Toronto, ON M3B 1V5
Tel (416) 392-1436
Fax (416) 392-1915

THE INFORMATION HEREON HAS BEEN COMPILED FOR GENERAL PLANNING PURPOSES ONLY.

NO ONE MAY COPY, REPRODUCE, DISTRIBUTE OR ALTER THIS MAP WITHOUT THE WRITTEN PERMISSION OF THE CITY OF TORONTO.

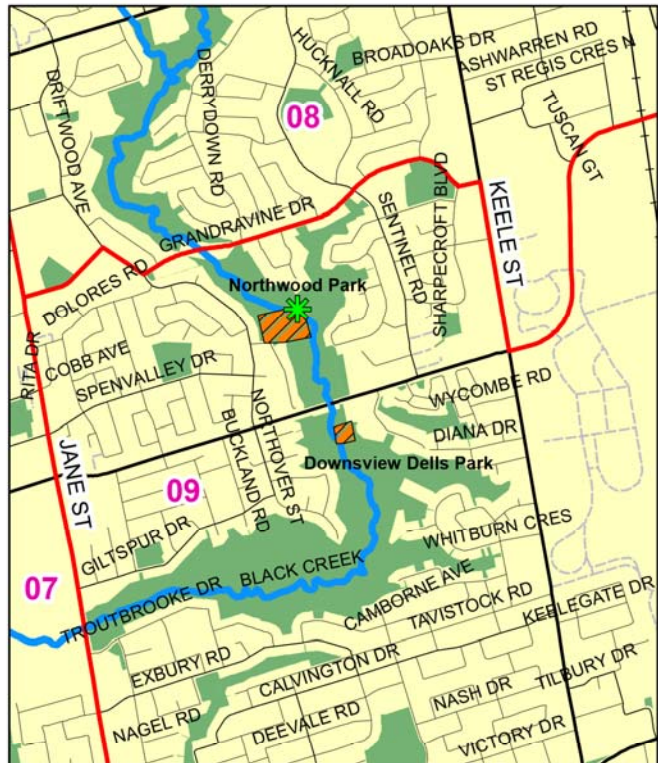
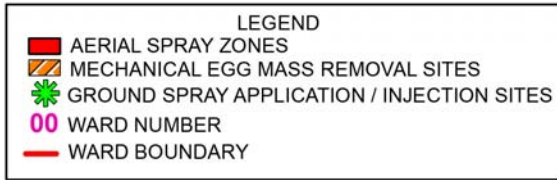
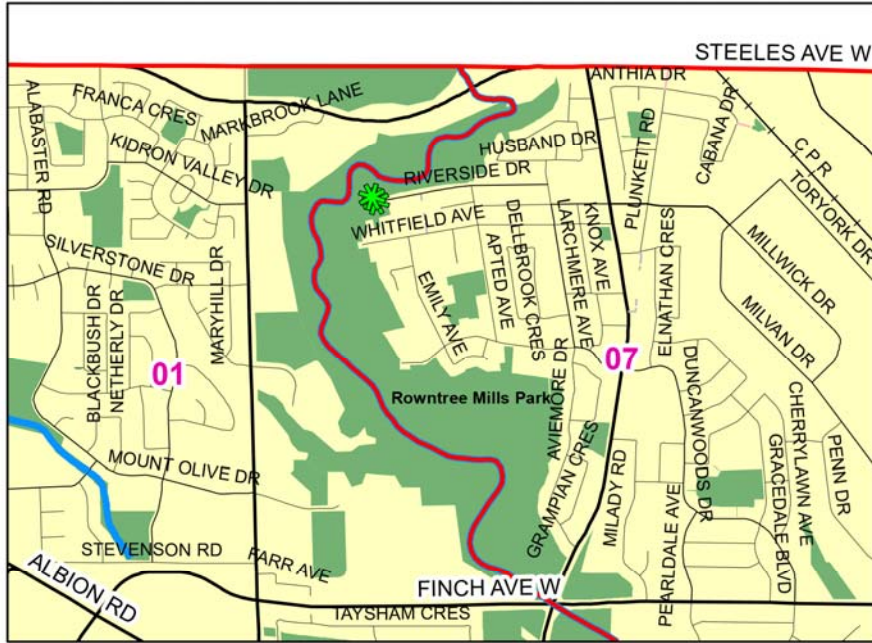
© Copyright City of Toronto



DATA SOURCE:
BASE MAP - TORONTO STREET CENTRELINE,
SPRAY LOCATIONS - URBAN FORESTRY, 02/2013



2013 Gypsy Moth Management Plan: Close Up of Proposed Treatment Sites



THE INFORMATION HEREON HAS BEEN COMPILED FOR GENERAL PLANNING PURPOSES ONLY.

NO ONE MAY COPY, REPRODUCE, DISTRIBUTE OR ALTER THIS MAP WITHOUT THE WRITTEN PERMISSION OF THE CITY OF TORONTO.

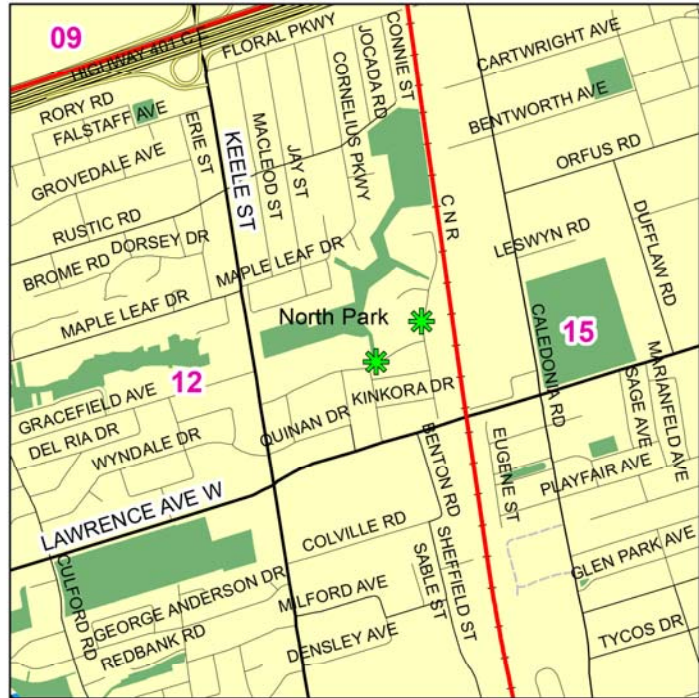
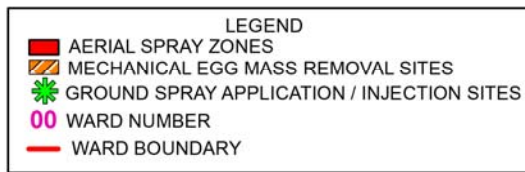
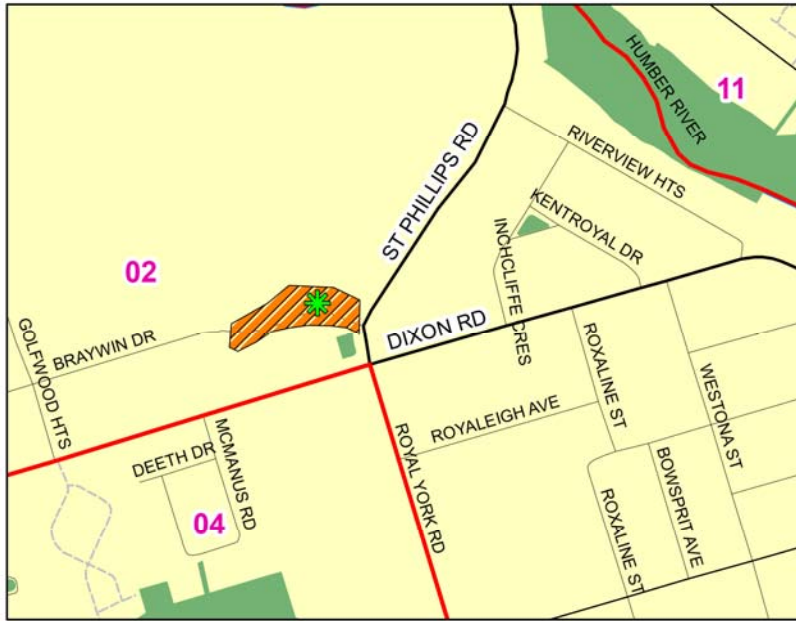
© Copyright City of Toronto



Urban Forestry:
 Forest Health Care
 18 Dyas Rd, 1st Floor
 Toronto, ON M3B 1V5
 Tel (416)392-1436
 Fax (416) 392-1915

DATA SOURCE:
 BASE MAP - TOLIMITS
 SPRAY LOCATIONS - URBAN FORESTRY, 02/2013

2013 Gypsy Moth Management Plan: Close Up of Proposed Treatment Sites



THE INFORMATION HEREON HAS BEEN COMPILED FOR GENERAL PLANNING PURPOSES ONLY.

NO ONE MAY COPY, REPRODUCE, DISTRIBUTE OR ALTER THIS MAP WITHOUT THE WRITTEN PERMISSION OF THE CITY OF TORONTO.

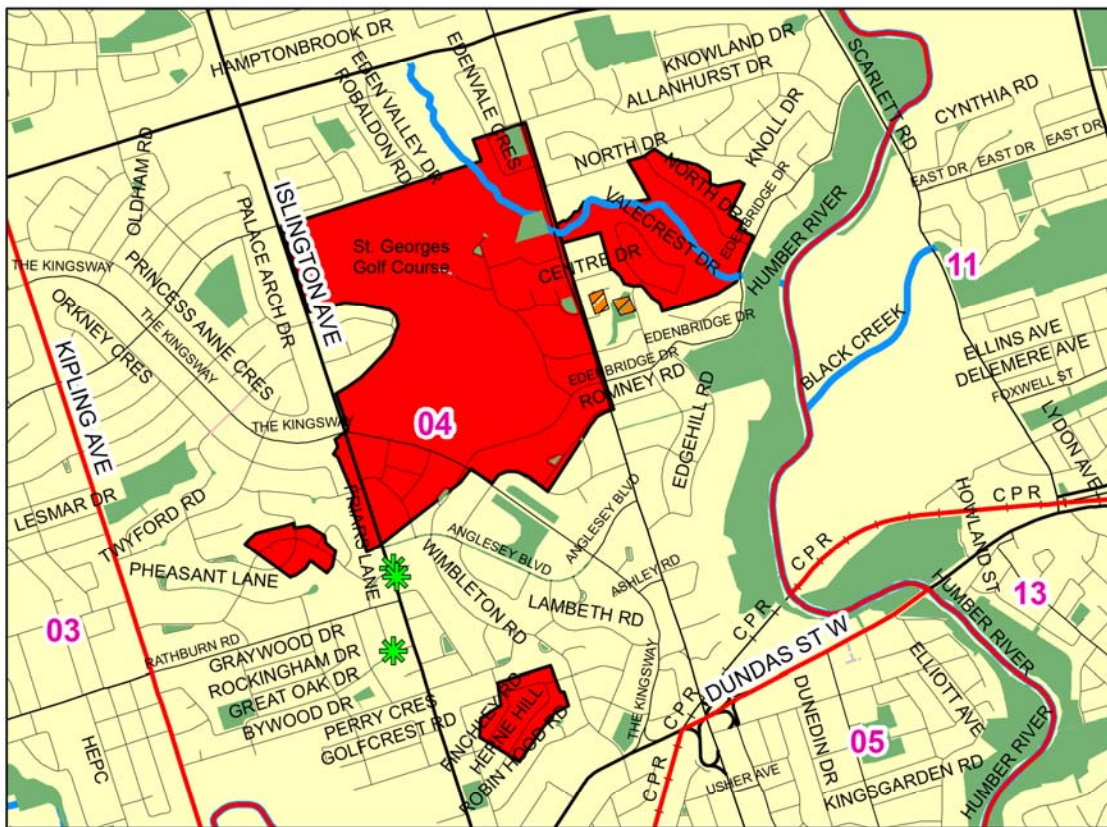
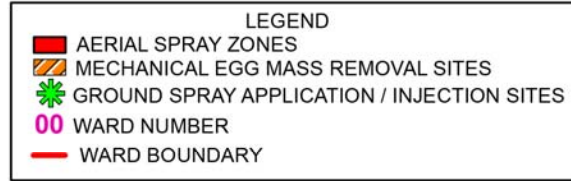
© Copyright City of Toronto



Urban Forestry:
 Forest Health Care
 18 D'Yas Rd, 1st Floor
 Toronto, ON M3B 1V5
 Tel (416) 392-1436
 Fax (416) 392-1915

DATA SOURCE:
 BASE MAP - TOLIMITS
 SPRAY LOCATIONS - URBAN FORESTRY, 02/2013

2013 Gypsy Moth Management Plan: Close Up of Proposed Treatment Sites



THE INFORMATION HEREON HAS BEEN COMPILED FOR GENERAL PLANNING PURPOSES ONLY.

NO ONE MAY COPY, REPRODUCE, DISTRIBUTE OR ALTER THIS MAP WITHOUT THE WRITTEN PERMISSION OF THE CITY OF TORONTO.

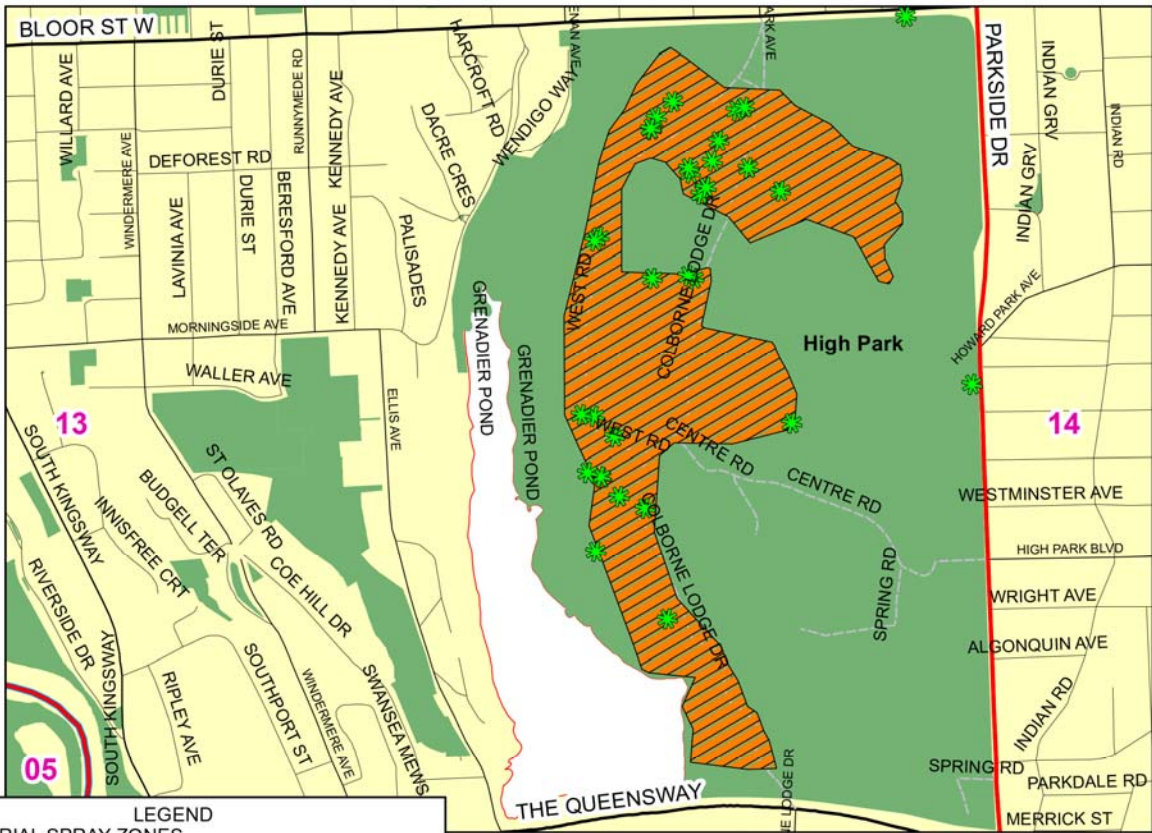
© Copyright City of Toronto



Urban Forestry:
 Forest Health Care
 18 Dyas Rd, 1st Floor
 Toronto, ON M3B 1V5
 Tel (416)392-1436
 Fax (416) 392-1915

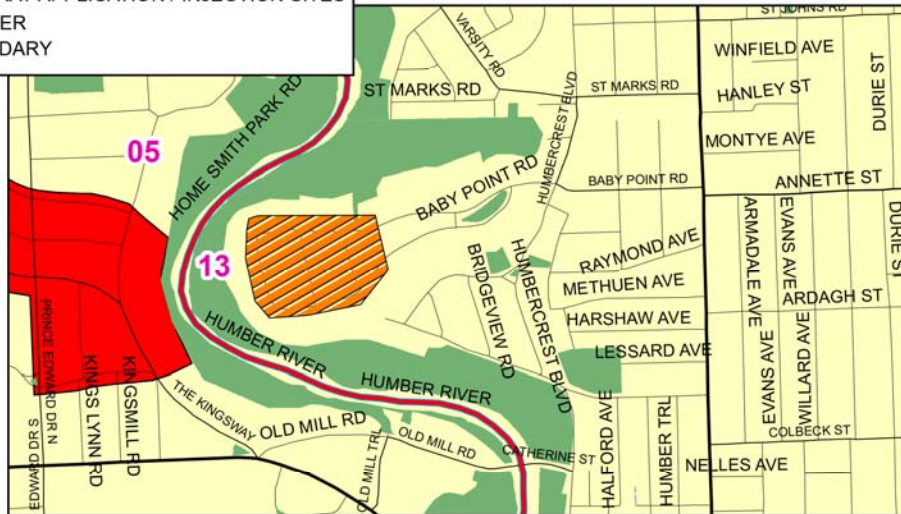
DATA SOURCE:
 BASE MAP - TOLIMITS
 SPRAY LOCATIONS - URBAN FORESTRY, 02/2013

2013 Gypsy Moth Management Plan: Close Up of Proposed Treatment Sites



LEGEND

- AERIAL SPRAY ZONES
- MECHANICAL EGG MASS REMOVAL SITES
- GROUND SPRAY APPLICATION / INJECTION SITES
- WARD NUMBER
- WARD BOUNDARY



THE INFORMATION HEREON HAS BEEN COMPILED FOR GENERAL PLANNING PURPOSES ONLY.

NO ONE MAY COPY, REPRODUCE, DISTRIBUTE OR ALTER THIS MAP WITHOUT THE WRITTEN PERMISSION OF THE CITY OF TORONTO.

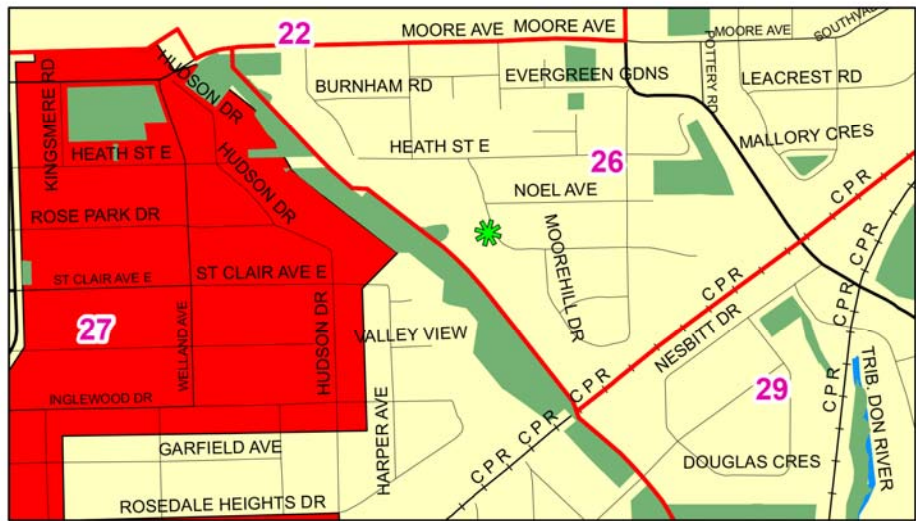
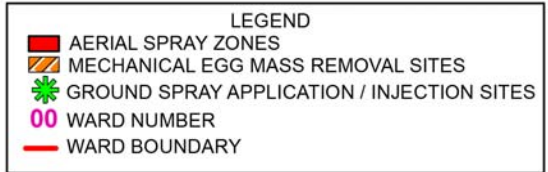
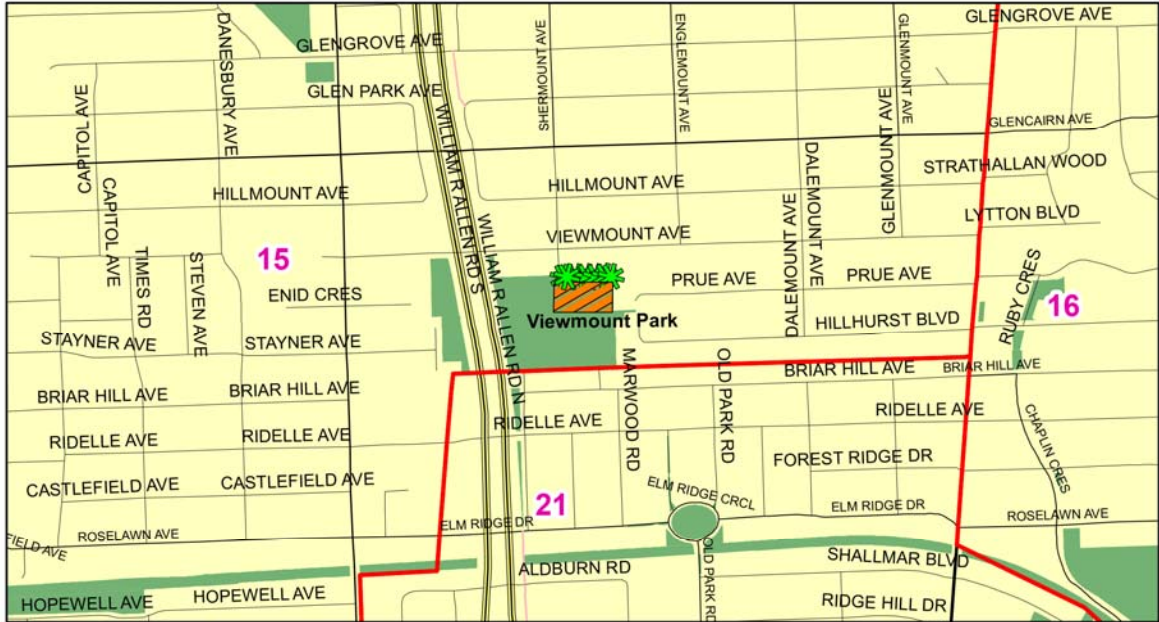
© Copyright City of Toronto



Urban Forestry:
 Forest Health Care
 18 Dyas Rd, 1st Floor
 Toronto, ON M3B 1V5
 Tel (416)392-1436
 Fax (416) 392-1915

DATA SOURCE:
 BASE MAP - TOLIMITS
 SPRAY LOCATIONS - URBAN FORESTRY, 02/2013

2013 Gypsy Moth Management Plan: Close Up of Proposed Treatment Sites



THE INFORMATION HEREON HAS BEEN COMPILED FOR GENERAL PLANNING PURPOSES ONLY.

NO ONE MAY COPY, REPRODUCE, DISTRIBUTE OR ALTER THIS MAP WITHOUT THE WRITTEN PERMISSION OF THE CITY OF TORONTO.

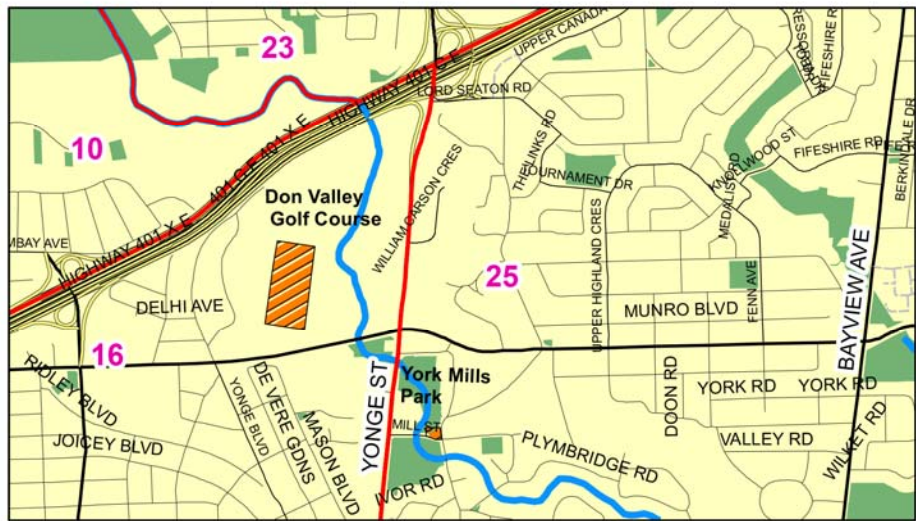
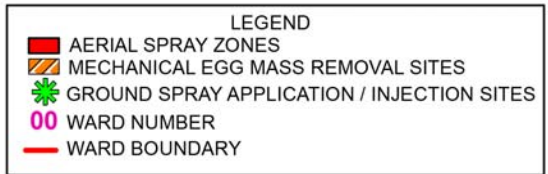
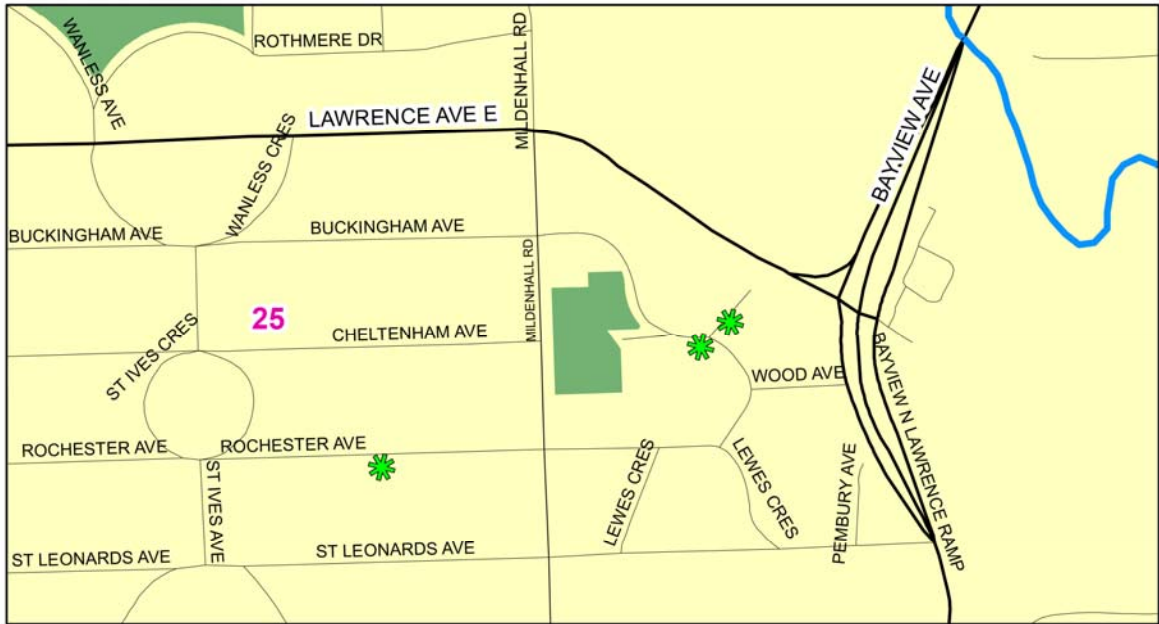
© Copyright City of Toronto



Urban Forestry:
 Forest Health Care
 18 D'Yas Rd, 1st Floor
 Toronto, ON M3B 1V5
 Tel (416) 392-1436
 Fax (416) 392-1915

DATA SOURCE:
 BASE MAP - TOLIMITS
 SPRAY LOCATIONS - URBAN FORESTRY, 02/2013

2013 Gypsy Moth Management Plan: Close Up of Proposed Treatment Sites



THE INFORMATION HEREON HAS BEEN COMPILED FOR GENERAL PLANNING PURPOSES ONLY.

NO ONE MAY COPY, REPRODUCE, DISTRIBUTE OR ALTER THIS MAP WITHOUT THE WRITTEN PERMISSION OF THE CITY OF TORONTO.

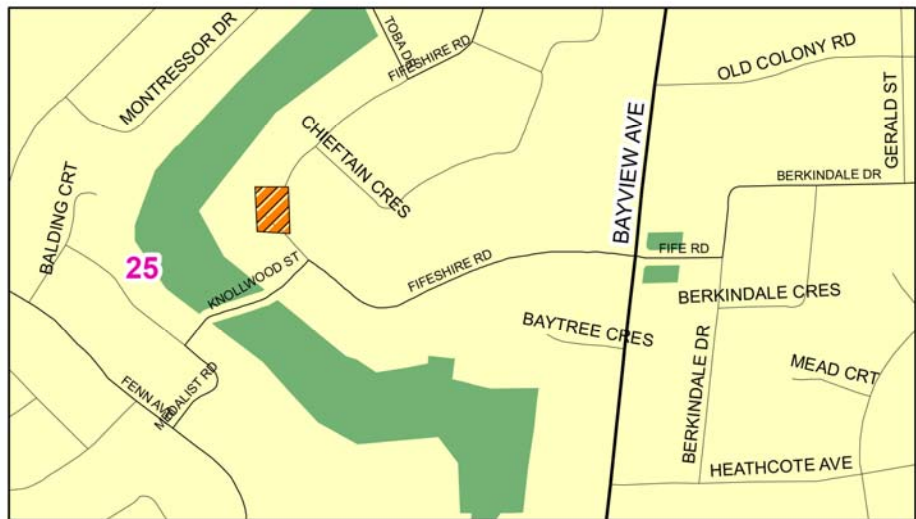
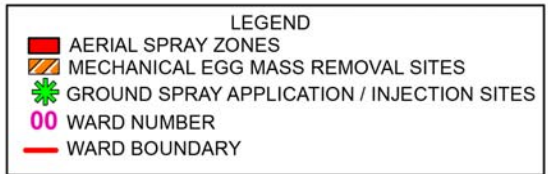
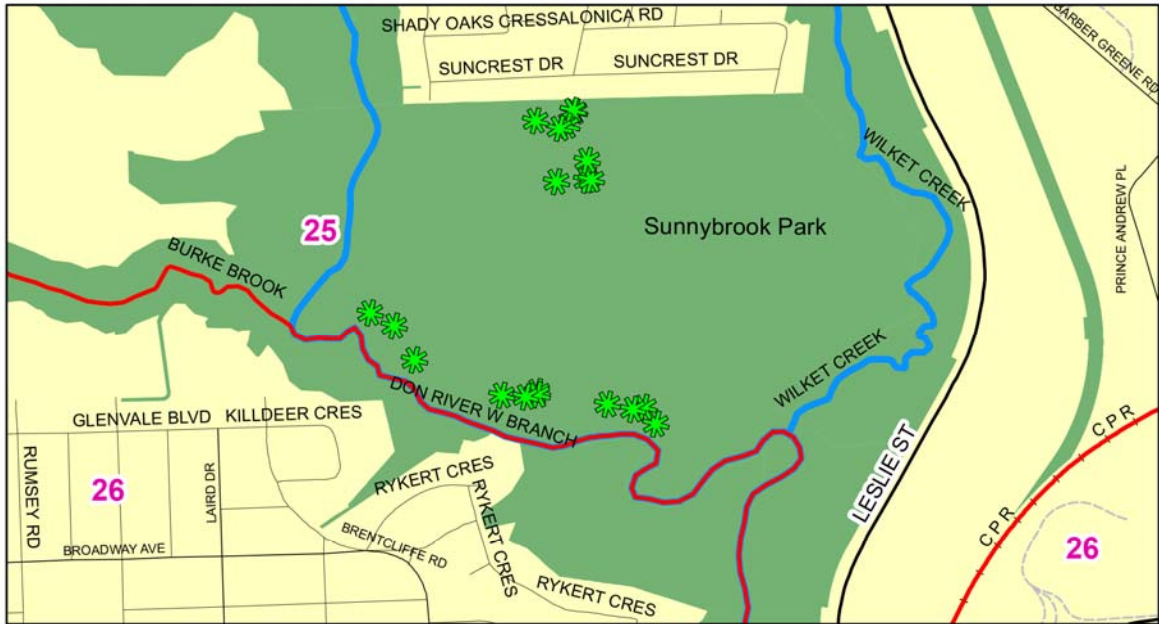
© Copyright City of Toronto



Urban Forestry:
 Forest Health Care
 18 Dyas Rd, 1st Floor
 Toronto, ON M3B 1V5
 Tel (416) 392-1436
 Fax (416) 392-1915

DATA SOURCE:
 BASE MAP - TOLIMITS
 SPRAY LOCATIONS - URBAN FORESTRY, 02/2013

2013 Gypsy Moth Management Plan: Close Up of Proposed Treatment Sites



THE INFORMATION HEREON HAS BEEN COMPILED FOR GENERAL PLANNING PURPOSES ONLY.

NO ONE MAY COPY, REPRODUCE, DISTRIBUTE OR ALTER THIS MAP WITHOUT THE WRITTEN PERMISSION OF THE CITY OF TORONTO.

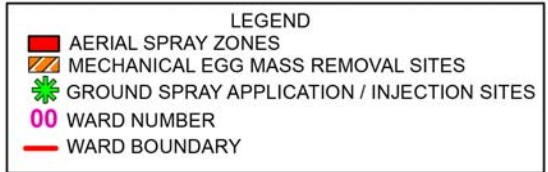
© Copyright City of Toronto



Urban Forestry:
Forest Health Care
18 Dyas Rd, 1st Floor
Toronto, ON M3B 1V5
Tel (416) 392-1436
Fax (416) 392-1915

DATA SOURCE:
BASE MAP - TOLIMITS
SPRAY LOCATIONS - URBAN FORESTRY, 02/2013

2013 Gypsy Moth Management Plan: Close Up of Proposed Treatment Sites



THE INFORMATION HEREON HAS BEEN COMPILED FOR GENERAL PLANNING PURPOSES ONLY.

NO ONE MAY COPY, REPRODUCE, DISTRIBUTE OR ALTER THIS MAP WITHOUT THE WRITTEN PERMISSION OF THE CITY OF TORONTO.

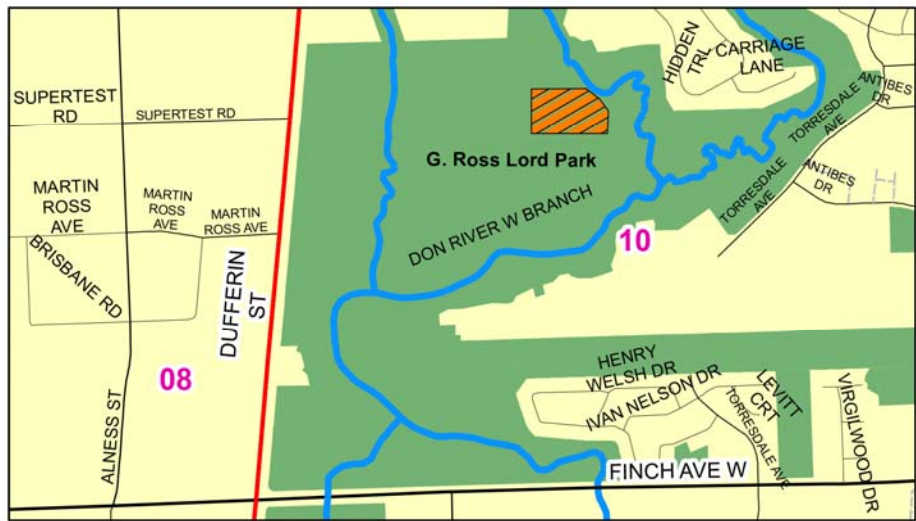
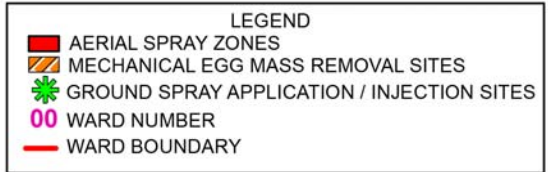
© Copyright City of Toronto



Urban Forestry:
 Forest Health Care
 18 Dyas Rd, 1st Floor
 Toronto, ON M3B 1V5
 Tel (416) 392-1436
 Fax (416) 392-1915

DATA SOURCE:
 BASE MAP - TOLIMITS
 SPRAY LOCATIONS - URBAN FORESTRY, 02/2013

2013 Gypsy Moth Management Plan: Close Up of Proposed Treatment Sites



THE INFORMATION HEREON HAS BEEN COMPILED FOR GENERAL PLANNING PURPOSES ONLY.

NO ONE MAY COPY, REPRODUCE, DISTRIBUTE OR ALTER THIS MAP WITHOUT THE WRITTEN PERMISSION OF THE CITY OF TORONTO.

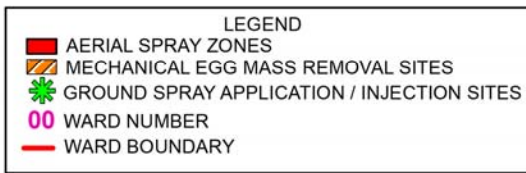
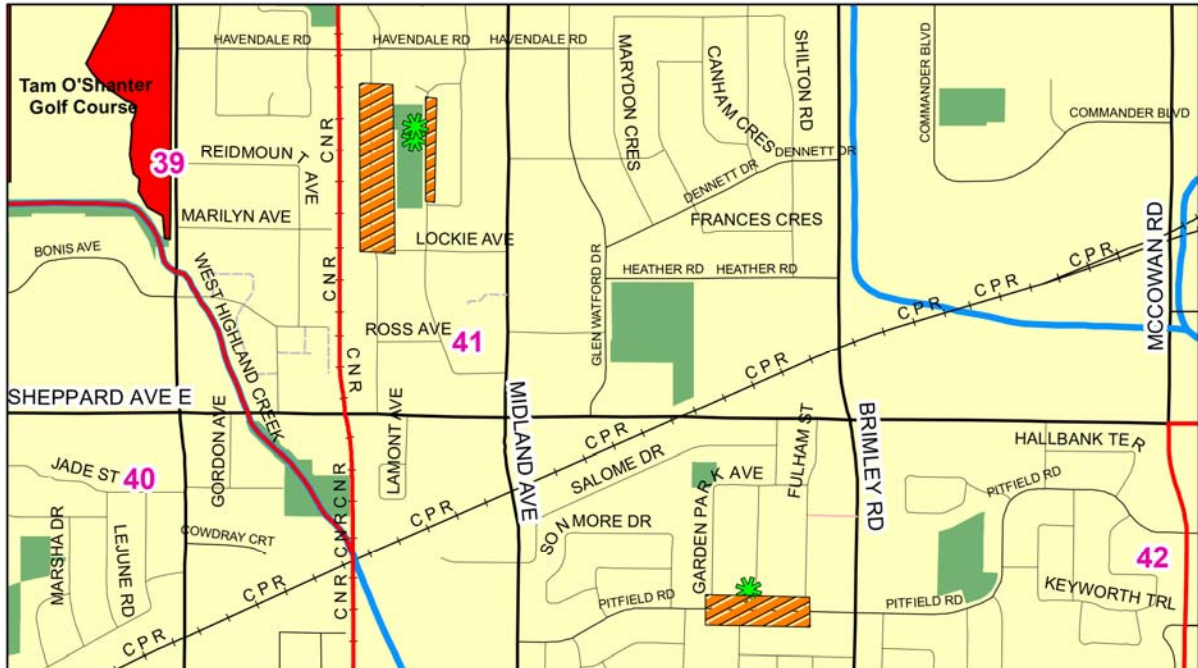
© Copyright City of Toronto



Urban Forestry:
 Forest Health Care
 18 Dyas Rd, 1st Floor
 Toronto, ON M3B 1V5
 Tel (416)392-1436
 Fax (416) 392-1915

DATA SOURCE:
 BASE MAP - TOLIMITS
 SPRAY LOCATIONS - URBAN FORESTRY, 02/2013

2013 Gypsy Moth Management Plan: Close Up of Proposed Treatment Sites

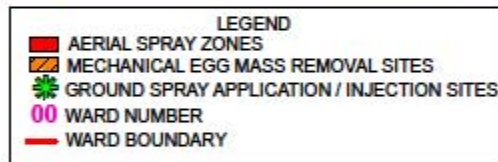


THE INFORMATION HEREON HAS BEEN COMPILED FOR GENERAL PLANNING PURPOSES ONLY.
 NO ONE MAY COPY, REPRODUCE, DISTRIBUTE OR ALTER THIS MAP WITHOUT THE WRITTEN PERMISSION OF THE CITY OF TORONTO.
 © Copyright City of Toronto

TORONTO Parks, Forestry & Recreation
 Urban Forestry:
 Forest Health Care
 18 Dyas Rd, 1st Floor
 Toronto, ON M3B 1V5
 Tel (416) 392-1436
 Fax (416) 392-1915

DATA SOURCE:
 BASE MAP - TOLIMITS
 SPRAY LOCATIONS - URBAN FORESTRY, 02/2013

2013 Gypsy Moth Management Plan: Close Up of Proposed Treatment Sites



THE INFORMATION HEREON HAS BEEN COMPILED FOR GENERAL PLANNING PURPOSES ONLY.

NO ONE MAY COPY, REPRODUCE, DISTRIBUTE OR ALTER THIS MAP WITHOUT THE WRITTEN PERMISSION OF THE CITY OF TORONTO.

© Copyright City of Toronto

Toronto Parks, Forestry & Recreation

Urban Forestry:
 Forest Health Care
 16 Dyer Rd, 1st Floor
 Toronto, ON M5S 1V5
 Tel: (416) 392-1436
 Fax: (416) 392-1915

DATA SOURCE:
 BASE MAP - TOLMITS
 SPRAY LOCATIONS - URBAN FORESTRY, 020513

2013 Gypsy Moth Management Plan: Close Up of Proposed Treatment Sites



LEGEND

- AERIAL SPRAY ZONES
- MECHANICAL EGG MASS REMOVAL SITES
- GROUND SPRAY APPLICATION / INJECTION SITES
- WARD NUMBER
- WARD BOUNDARY



THE INFORMATION HEREON HAS BEEN COMPILED FOR GENERAL PLANNING PURPOSES ONLY.

NO ONE MAY COPY, REPRODUCE, DISTRIBUTE OR ALTER THIS MAP WITHOUT THE WRITTEN PERMISSION OF THE CITY OF TORONTO.

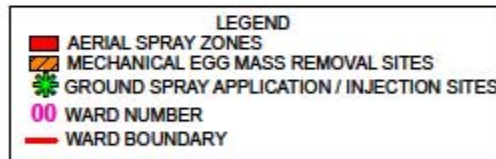
© Copyright City of Toronto



Urban Forestry:
 Forest Health Care
 16 Dyer Rd, 1st Floor
 Toronto, ON M5S 1V5
 Tel: (416) 392-1436
 Fax: (416) 392-1915

DATA SOURCE:
 BASE MAP - TOLMITS
 SPRAY LOCATIONS - URBAN FORESTRY, 020103

2013 Gypsy Moth Management Plan: Close Up of Proposed Treatment Sites



THE INFORMATION HEREON HAS BEEN COMPILED FOR GENERAL PLANNING PURPOSES ONLY. NO ONE MAY COPY, REPRODUCE, DISTRIBUTE OR ALTER THIS MAP WITHOUT THE WRITTEN PERMISSION OF THE CITY OF TORONTO.
© Copyright City of Toronto

Toronto Parks, Forestry & Recreation
Urban Forestry:
Forest Health Care
18 Dyer Rd, 1st Floor
Toronto, ON M5S 1V5
Tel: (416) 392-1436
Fax: (416) 392-1915

DATA SOURCE:
BASE MAP - TOLMITS
SPRAY LOCATIONS - URBAN FORESTRY, 020913