

Authority: Toronto and East York Community Council Item 24.13, adopted as amended, by City of Toronto Council on June 11, 12 and 13, 2013 and Section 169-26A of City of Toronto Municipal Code Chapter 169, Officials, City

CITY OF TORONTO

BY-LAW No. 401-2014

To amend By-law No. 818-2013, being a by-law "To amend the General Zoning By-law No. 438-86, as amended, of the former City of Toronto with respect to the lands municipally known as 333-351 King Street East", to correct technical mapping errors in Maps 2 and 3.

Whereas at its meeting of June 11, 12 and 13, 2013, City Council enacted By-law No. 818-2013 to amend the General Zoning By-law No. 438-86, as amended, of the former City of Toronto with respect to lands known municipally in the year 2012 as 333 to 351 King Street East; and

Whereas it has become necessary to make technical amendments to correct graphical errors in Map 2 and Map 3 of By-law No. 818-2013; and

Whereas under Section 169-26 of City of Toronto Municipal Code Chapter 169, the City Solicitor, in consultation with the City Clerk may submit bills directly to Council to make technical amendments to the Municipal Code and other by-laws to correct technical errors;

The Council of the City of Toronto enacts:

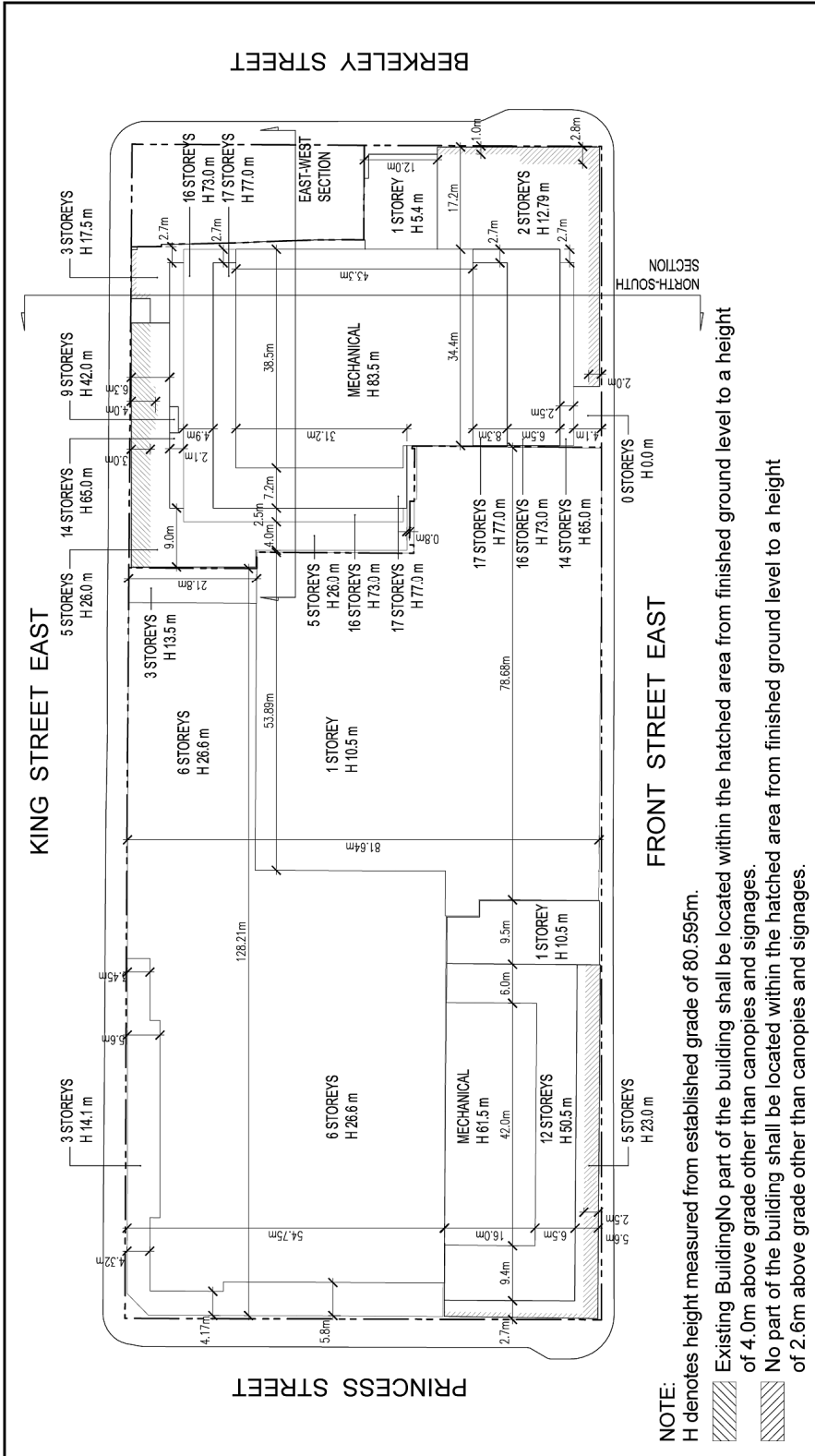
1. Map 2 and Map 3 of By-law No. 818-2013, being an amendment to the General Zoning By-law No. 438-86, as amended, of the former City of Toronto, are hereby respectively replaced by Map 2 and Map 3 attached hereto, in order to correct technical mapping errors.

Enacted and passed on May 8, 2014.

Frances Nunziata,
Speaker

Ulli S. Watkiss,
City Clerk

(Seal of the City)



NOTE:
 H denotes height measured from established grade of 80.595m.
 Existing Building No part of the building shall be located within the hatched area from finished ground level to a height of 4.0m above grade other than canopies and signages.
 No part of the building shall be located within the hatched area from finished ground level to a height of 2.6m above grade other than canopies and signages.



City Planning
Map 2

333-351 King Street East

File # 12 144494 0Z



Not to Scale
 04/29/2014

