

CITY OF TORONTO

BY-LAW 155-2022

To provide for an integrated pest management plan to control *Lymantria dispar dispar* (LDD) moth infestation.

Whereas the presence of *Lymantria dispar dispar* (LDD) (formerly referred to as European gypsy moth) populations in certain areas of the City has reached outbreak levels; and

Whereas in the interest of preserving the environmental well-being of the City it is necessary to implement control measures in order to prevent further tree loss and defoliation and to preserve the tree canopy;

The Council of the City of Toronto enacts:

1. The General Manager, Parks Forestry and Recreation is authorized to implement an integrated pest management plan to control *Lymantria dispar dispar* (LDD) infestation in Wards 6, 15, 16, 17, 18, 19, 20, 21, 22, 23, 24 and 25, including aerial spraying of the biological control agent *Bacillus thuringiensis* subspecies *kurstaki* (Btk) (Product Name: Foray 48B Biological Insecticide Aqueous Suspension- (PCP) Registration Number: 24977) in those areas identified on the map attached as Schedule A to this by-law.
2. The General Manager, Parks Forestry and Recreation is authorized to implement an integrated pest management plan to control *Lymantria dispar dispar* (LDD) infestation in Ward 4, including aerial spraying of the biological control agent *Lymantria dispar* Nucleopolyhedrovirus (Product Name: BoVir Suspension Concentrate Insecticidal Virus-PCP Registration Number 34427) in those areas identified on the map attached as Schedule B to this by-law.

Enacted and passed on March 9, 2022.

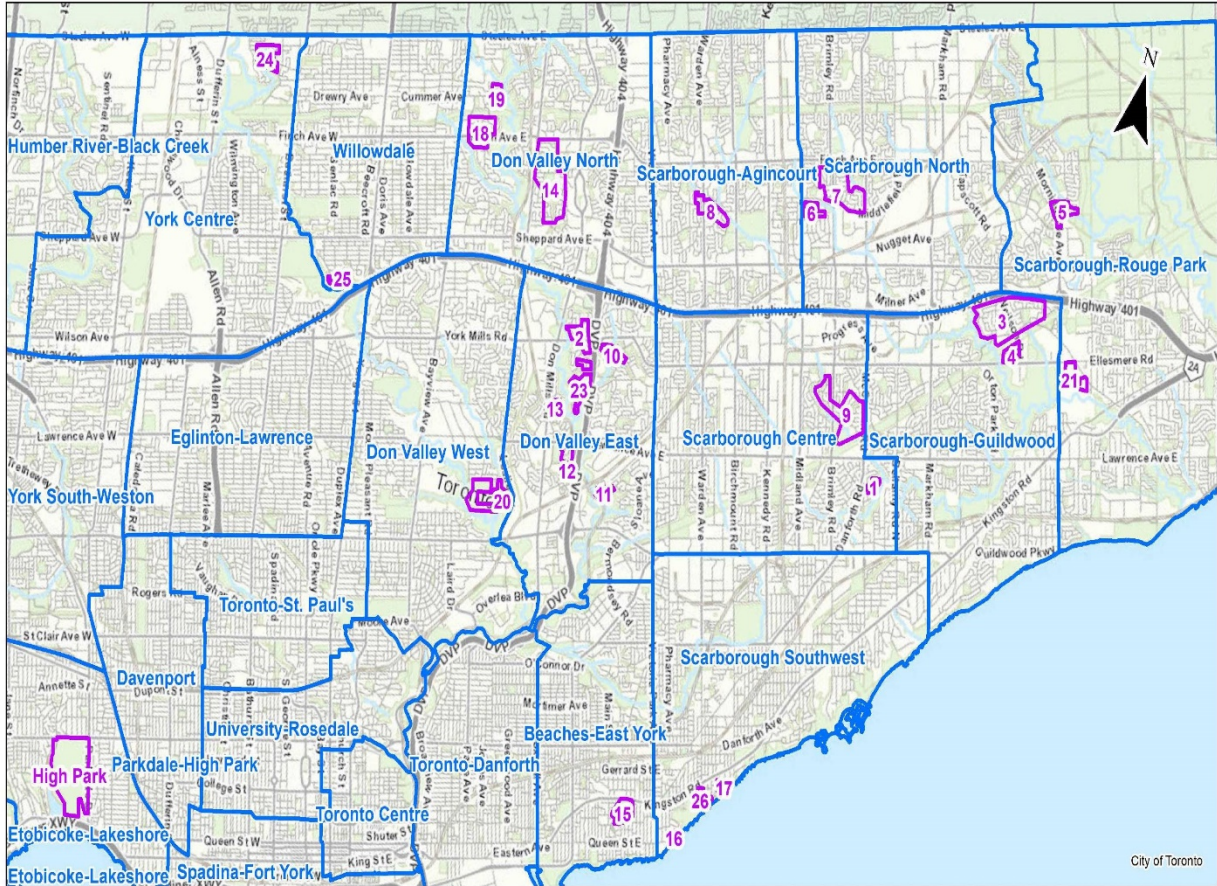
Frances Nunziata,
Speaker

John D. Elvidge,
City Clerk

(Seal of the City)

SCHEDULE "A"

2022 LDD Moth Control Program: Overview of Spray Blocks



Under Toronto
 Local-Health Care
 18 Eglon Rd. 1st Floor
 Toronto, ON M6J 1T5
 Tel: (416) 392-4133
 Fax: (416) 392-4115
 4-311 (toll-free)

0 900 1,800 3,600 Metres

Total Btk Treatment Area: 658 Ha.
High Park Treatment Area: 128 Ha.

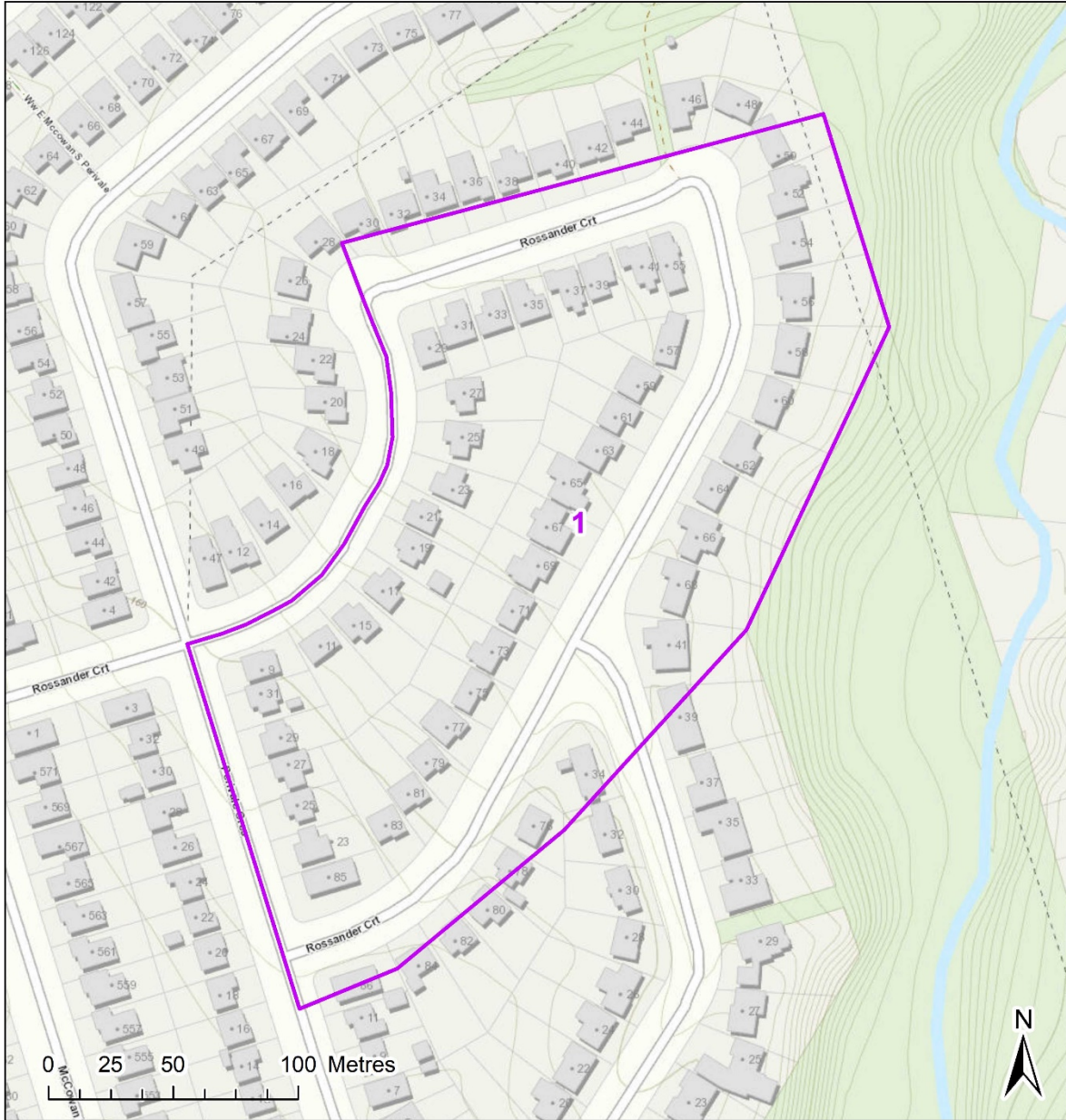
Legend

- Spray Block Boundary
- Ward Boundary

Spray Block 1 - Rossander

- Total Treatment Area: 6 Ha.

- City Ward: Scarborough Centre (21)



Urban Forestry:
Forest Health Care
18 Dyas Rd, 1st Floor
Toronto, ON M3B 1V5
Tel: (416) 392-1438
Fax: (416) 392-1915

THE INFORMATION HEREON HAS BEEN COMPILED
FOR GENERAL PLANNING PURPOSES ONLY.
NO ONE MAY COPY, REPRODUCE, DISTRIBUTE OR
ALTER THIS MAP WITHOUT THE WRITTEN
PERMISSION OF THE CITY OF TORONTO
© Copyright City of Toronto

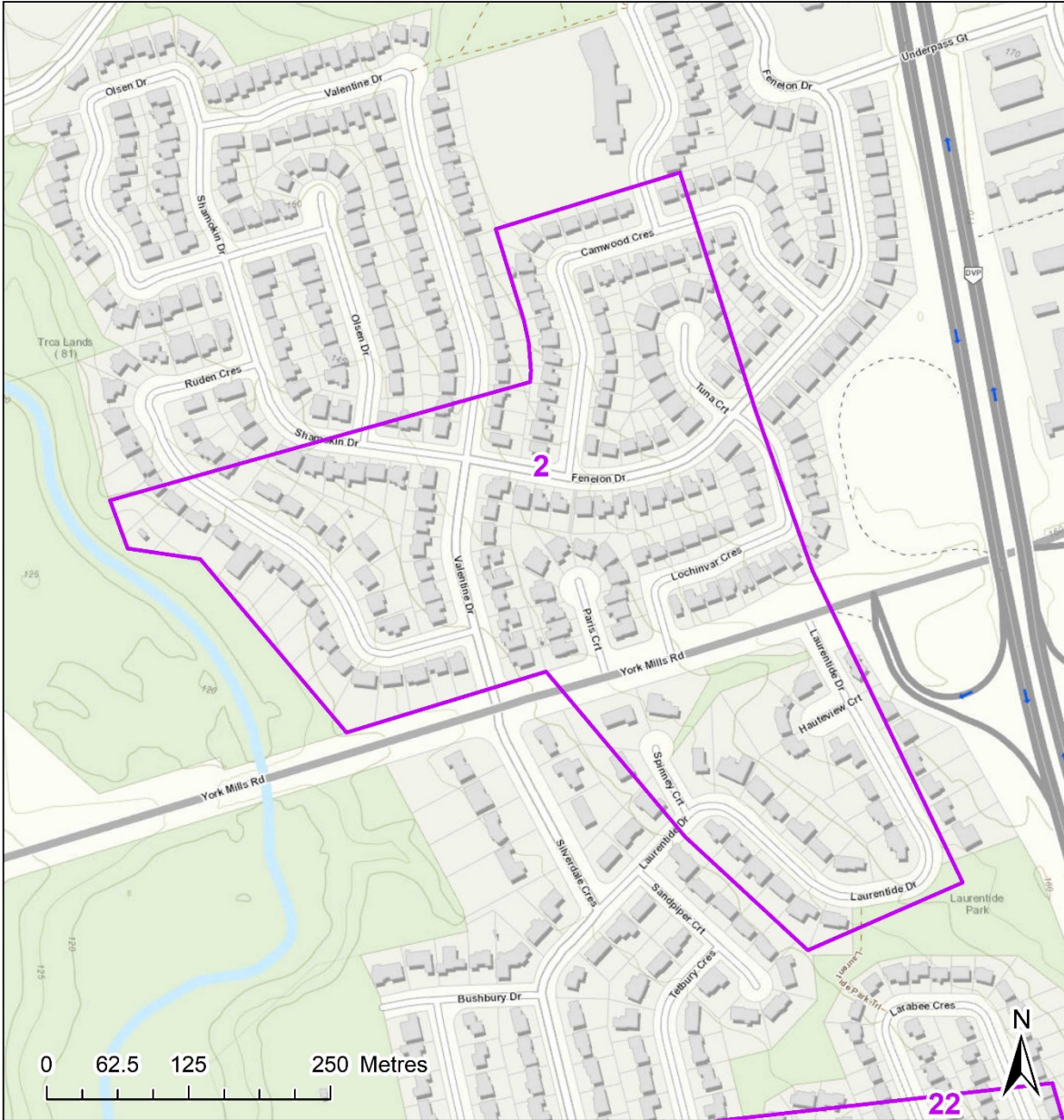
Legend

 Spray Block Boundary

Spray Block 2 - Valentine

- Total Treatment Area: 21 Ha.

- City Ward: Don Valley East (16)



Urban Forestry:
Forest Health Care
18 D'Yas Rd, 1st Floor
Toronto, ON M3B 1V5
Tel: (416) 392-1438
Fax: (416) 392-1915

THE INFORMATION HEREON HAS BEEN COMPILED FOR GENERAL PLANNING PURPOSES ONLY. NO ONE MAY COPY, REPRODUCE, DISTRIBUTE OR ALTER THIS MAP WITHOUT THE WRITTEN PERMISSION OF THE CITY OF TORONTO.
© Copyright City of Toronto

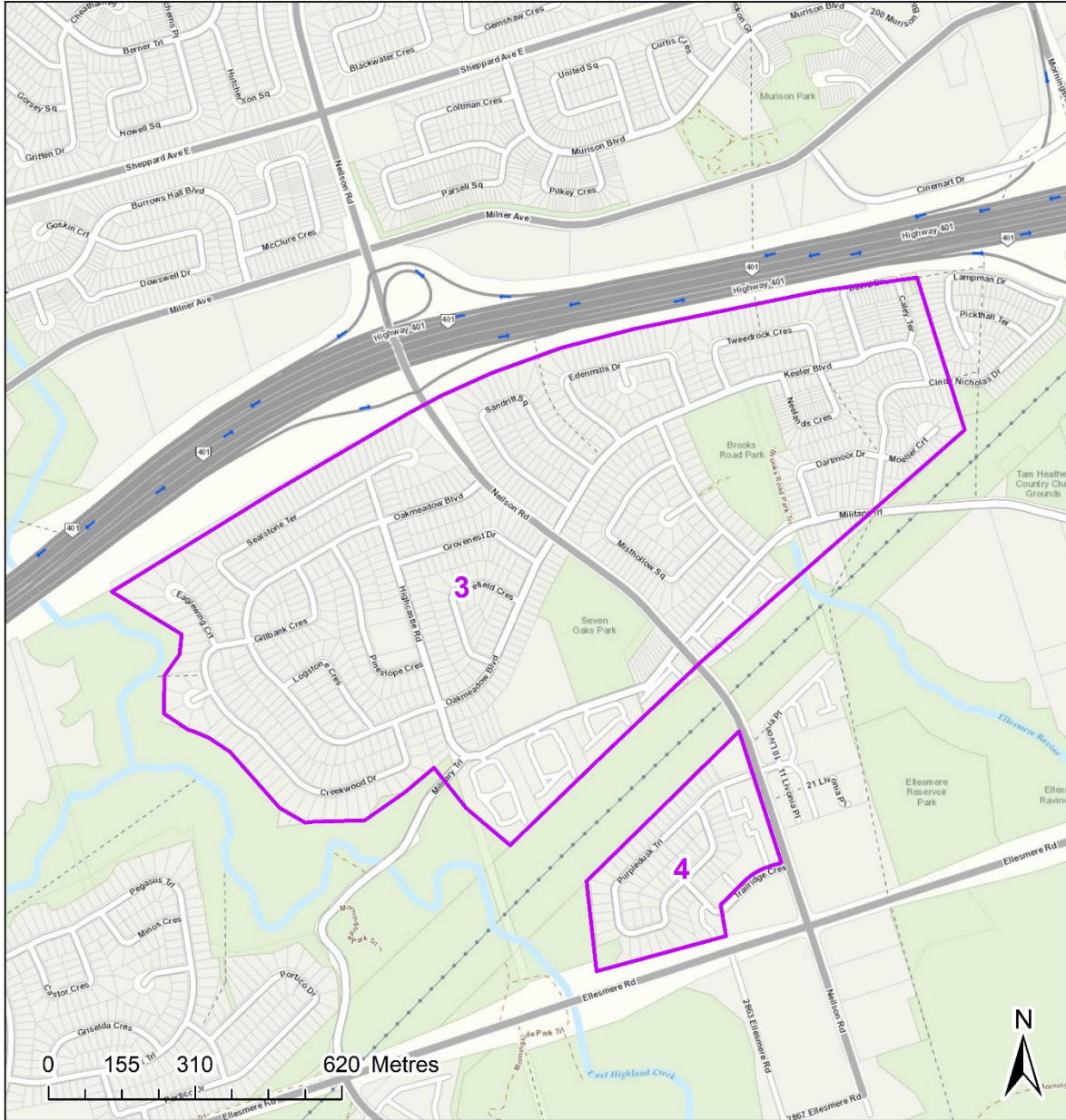
Legend

 Spray Block Boundary

Spray Block 3 - Seven Oaks

- Total Treatment Area: 118 Ha.

- City Ward: Scarborough-Guildwood (24)



Urban Forestry:
Forest Health Care
18 Dyas Rd, 1st Floor
Toronto, ON M3B 1V5
Tel: (416) 392-1438
Fax: (416) 392-1915

THE INFORMATION HEREON HAS BEEN COMPILED
FOR GENERAL PLANNING PURPOSES ONLY.
NO ONE MAY COPY, REPRODUCE, DISTRIBUTE OR
ALTER THIS MAP WITHOUT THE WRITTEN
PERMISSION OF THE CITY OF TORONTO
© Copyright City of Toronto

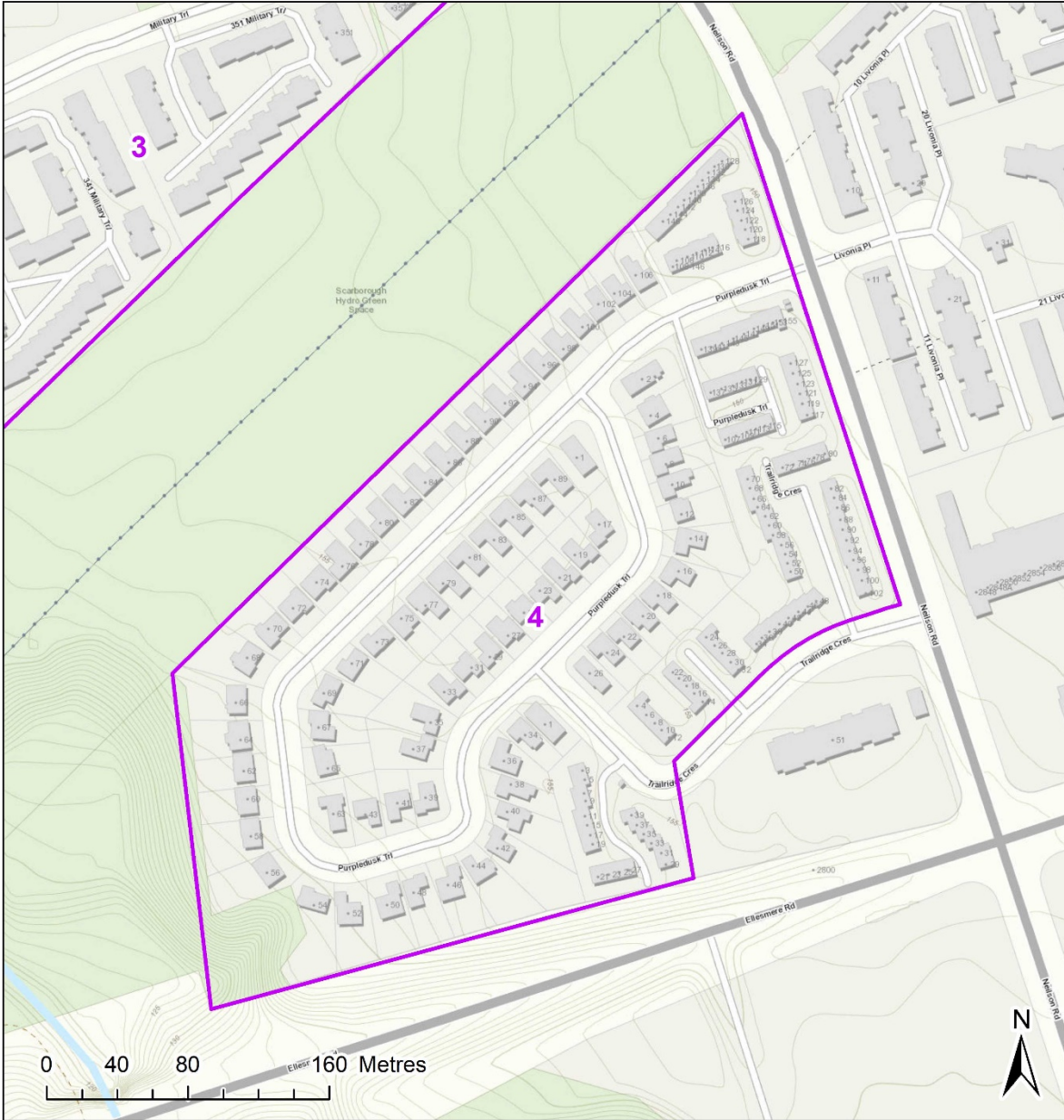
Legend

 Spray Block Boundary

Spray Block 4 - Purpledusk

- Total Treatment Area: 12 Ha.

- City Ward: Scarborough-Guildwood (24)



Urban Forestry:
Forest Health Care
18 Dyas Rd, 1st Floor
Toronto, ON M3B 1V5
Tel: (416) 392-1438
Fax: (416) 392-1915

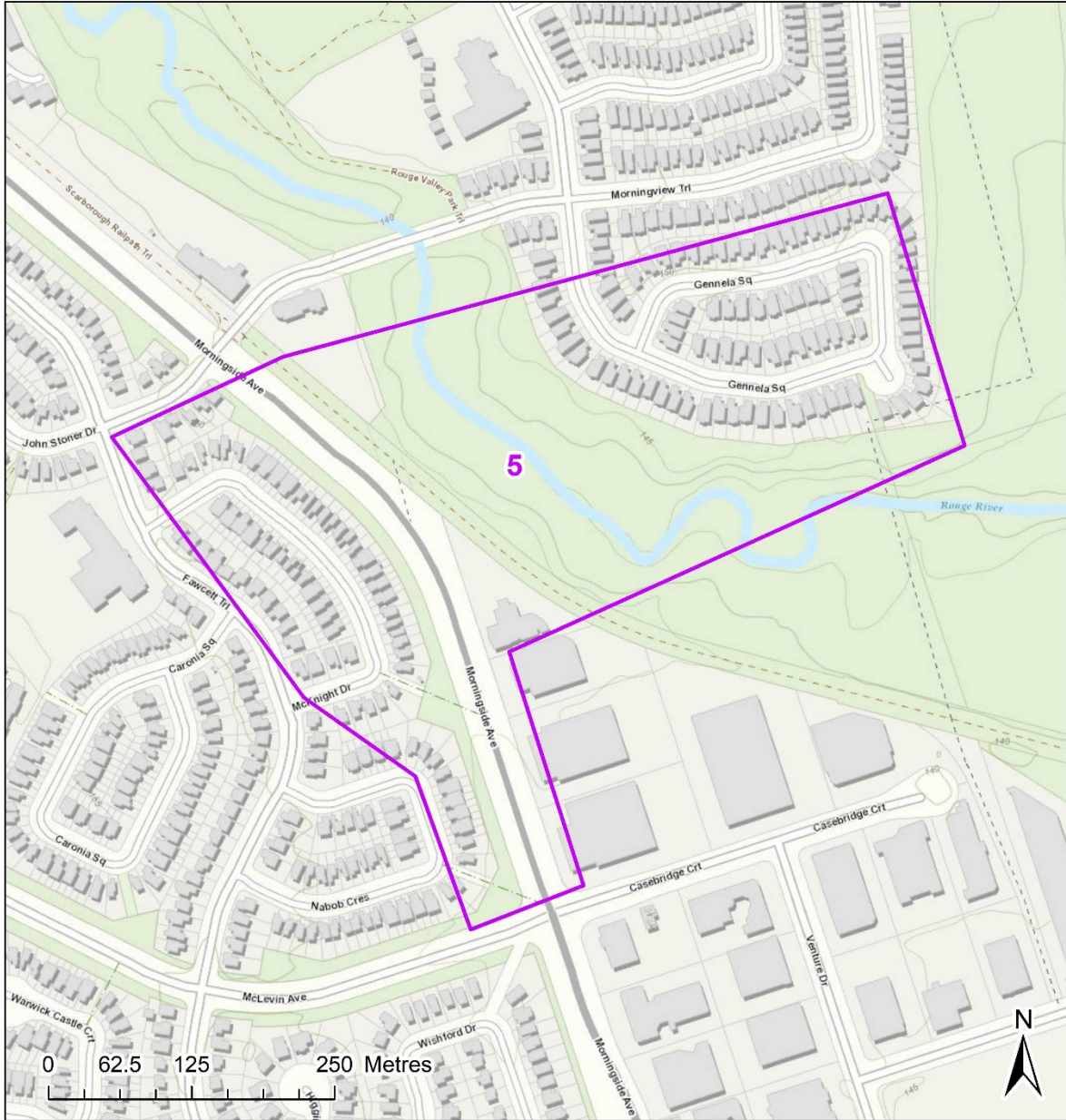
THE INFORMATION HEREON HAS BEEN COMPILED FOR GENERAL PLANNING PURPOSES ONLY.
NO ONE MAY COPY, REPRODUCE, DISTRIBUTE OR ALTER THIS MAP WITHOUT THE WRITTEN PERMISSION OF THE CITY OF TORONTO.
© Copyright City of Toronto

Legend

 Spray Block Boundary

Spray Block 5 - Gennela

- Total Treatment Area: 21 Ha.
- City Ward: Scarborough-Rouge Park (25)



Urban Forestry:
Forest Health Care
18 Dyas Rd, 1st Floor
Toronto, ON M3B 1V5
Tel: (416) 392-1436
Fax: (416) 392-1915

THE INFORMATION HEREON HAS BEEN COMPILED
FOR GENERAL PLANNING PURPOSES ONLY.
NO ONE MAY COPY, REPRODUCE, DISTRIBUTE OR
ALTER THIS MAP WITHOUT THE WRITTEN
PERMISSION OF THE CITY OF TORONTO
© Copyright City of Toronto

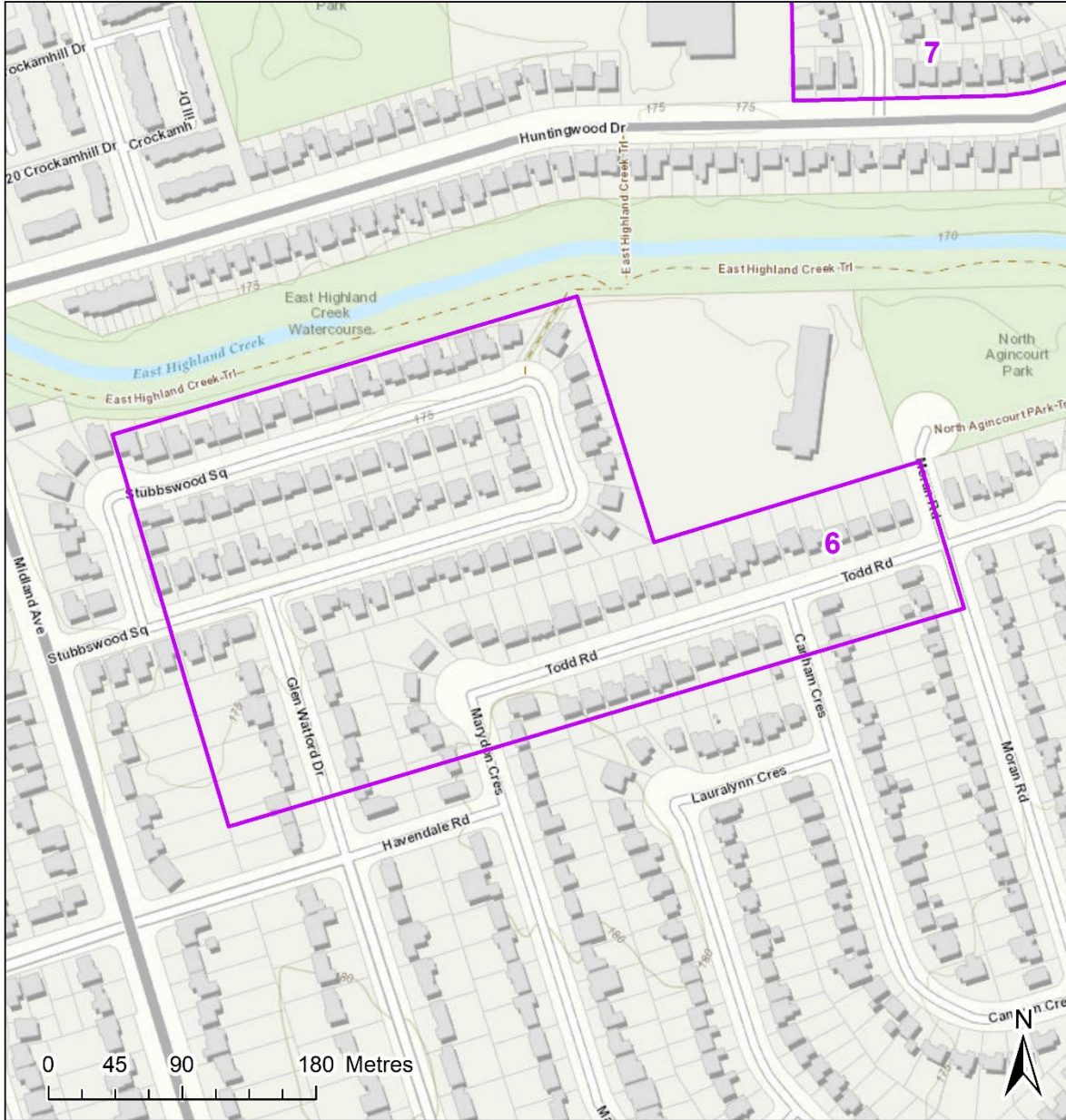
Legend

 Spray Block Boundary

Spray Block 6 - Stubbwood

- Total Treatment Area: 11 Ha.

- City Ward: Scarborough North (23)



Urban Forestry
Forest Health Care
18 Dyas Rd, 1st Floor
Toronto, ON M3B 1V5
Tel: (416) 392-1438
Fax: (416) 392-1915

THE INFORMATION HEREON HAS BEEN COMPILED
FOR GENERAL PLANNING PURPOSES ONLY.
NO ONE MAY COPY, REPRODUCE, DISTRIBUTE OR
ALTER THIS MAP WITHOUT THE WRITTEN
PERMISSION OF THE CITY OF TORONTO
© Copyright City of Toronto

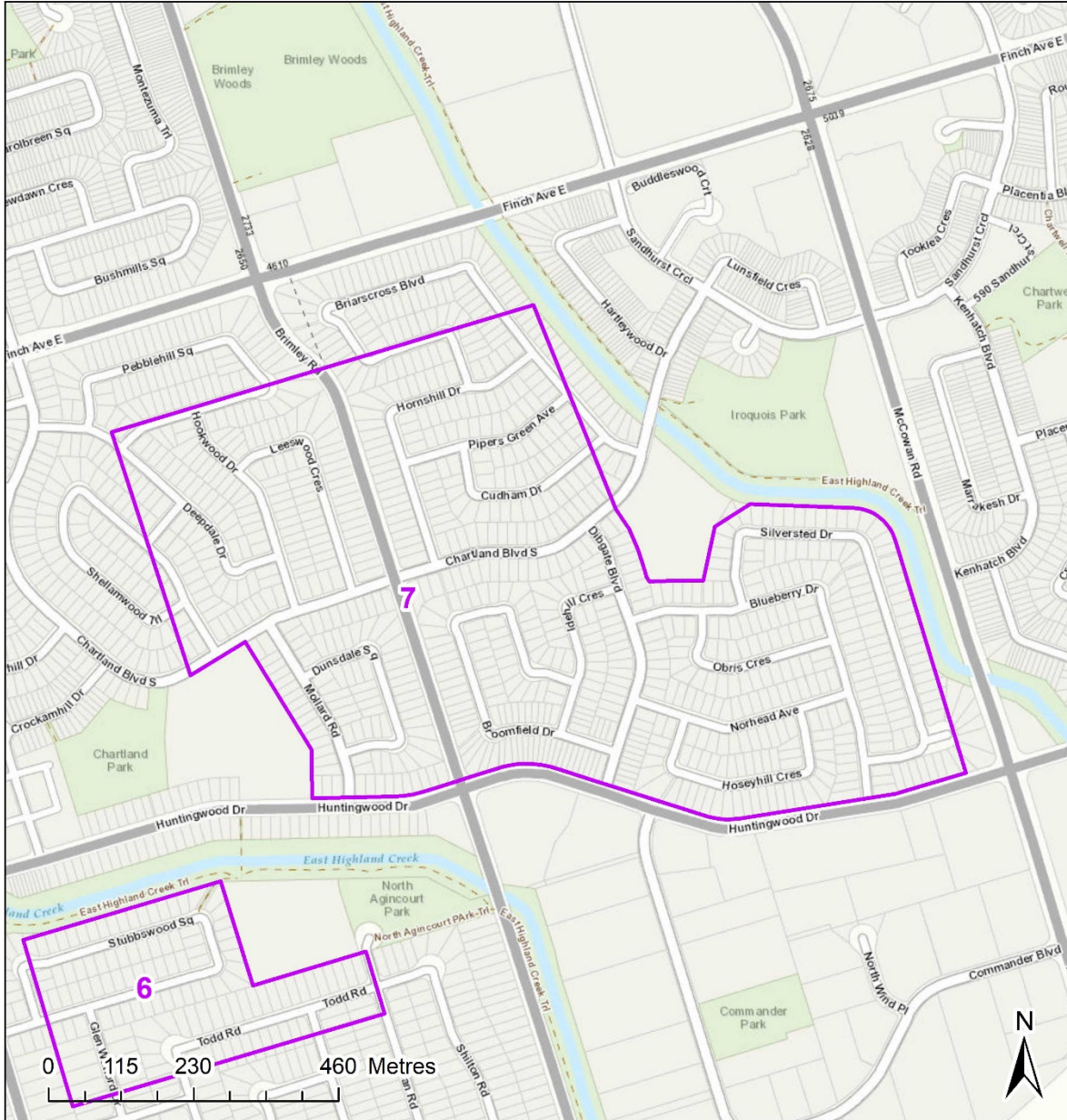
Legend

 Spray Block Boundary

Spray Block 7 - Chartland

- Total Treatment Area: 67 Ha.

- City Ward: Scarborough North (23)



Urban Forestry,
Forest Health Care
18 Dyas Rd, 1st Floor
Toronto, ON M3B 1V5
Tel: (416) 392-1438
Fax: (416) 392-1915

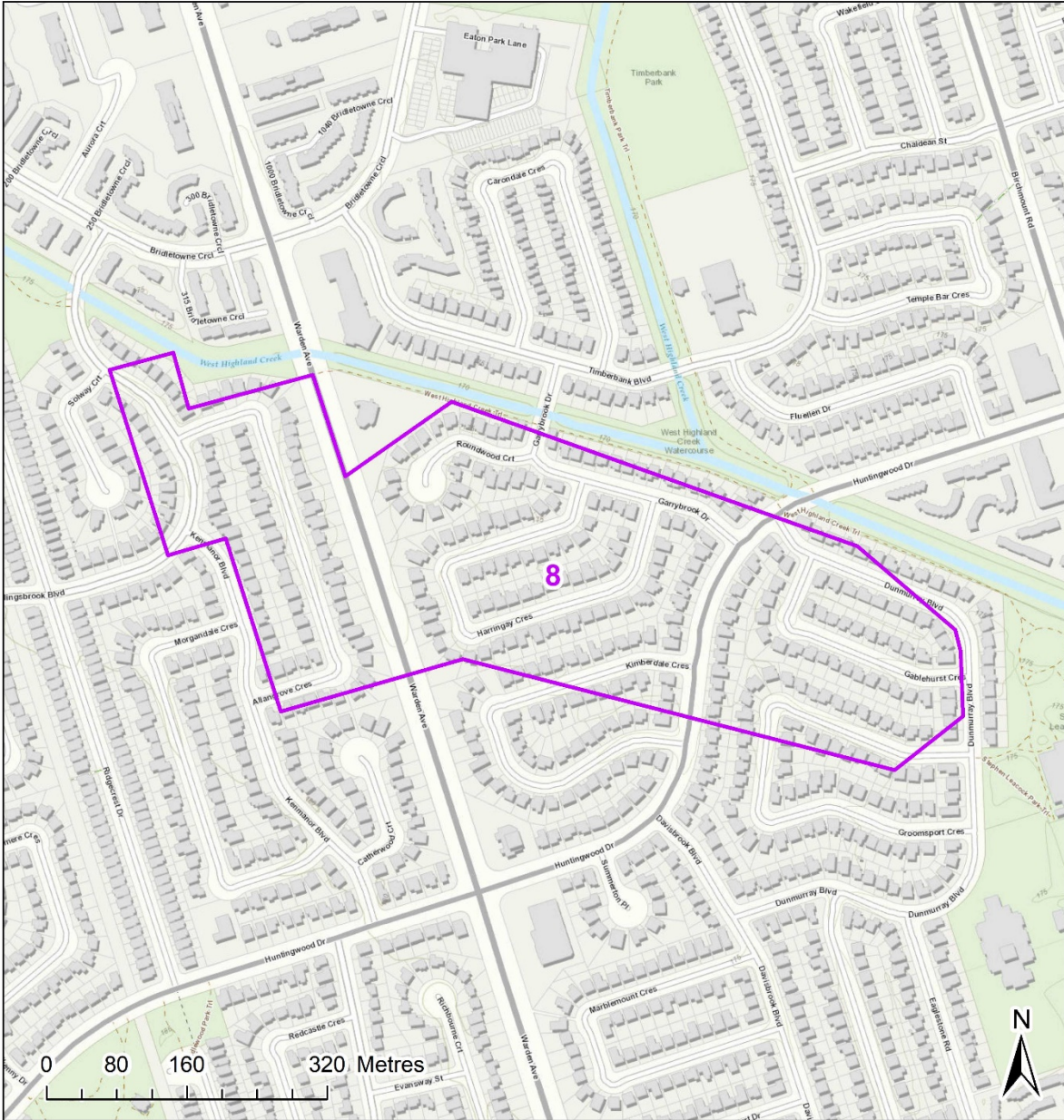
THE INFORMATION HEREON HAS BEEN COMPILED FOR GENERAL PLANNING PURPOSES ONLY.
NO ONE MAY COPY, REPRODUCE, DISTRIBUTE OR ALTER THIS MAP WITHOUT THE WRITTEN PERMISSION OF THE CITY OF TORONTO.
© copyright City of Toronto

Legend

 Spray Block Boundary

Spray Block 8 - Huntingwood

- Total Treatment Area: 24 Ha.
- City Ward: Scarborough-Agincourt (22)



Urban Forestry:
Forest Health Care
18 D'Yas Rd, 1st Floor
Toronto, ON M3B 1V5
Tel: (416) 392-1438
Fax: (416) 392-1915

THE INFORMATION HEREON HAS BEEN COMPILED
FOR GENERAL PLANNING PURPOSES ONLY.
NO ONE MAY COPY, REPRODUCE, DISTRIBUTE OR
ALTER THIS MAP WITHOUT THE WRITTEN
PERMISSION OF THE CITY OF TORONTO
© Copyright City of Toronto

Legend

 Spray Block Boundary

Spray Block 9 - Thompson Memorial
- Total Treatment Area: 75 Ha.
- City Ward: Scarborough Centre (21)



Urban Forestry,
Forest Health Care
18 D'Yas Rd, 1st Floor
Toronto, ON M3B 1V5
Tel: (416) 392-1438
Fax: (416) 392-1915

THE INFORMATION HEREON HAS BEEN COMPILED
FOR GENERAL PLANNING PURPOSES ONLY.
NO ONE MAY COPY, REPRODUCE, DISTRIBUTE OR
ALTER THIS MAP WITHOUT THE WRITTEN
PERMISSION OF THE CITY OF TORONTO
© copyright City of Toronto

Legend

 Spray Block Boundary

Spray Block 10 - Sagebrush

- Total Treatment Area: 12 Ha.

- City Ward: Don Valley East (16)



Urban Forestry:
Forest Health Care
18 Dyas Rd, 1st Floor
Toronto, ON M3B 1V5
Tel: (416) 392-1438
Fax: (416) 392-1915

THE INFORMATION HEREON HAS BEEN COMPILED
FOR GENERAL PLANNING PURPOSES ONLY.
NO ONE MAY COPY, REPRODUCE, DISTRIBUTE OR
ALTER THIS MAP WITHOUT THE WRITTEN
PERMISSION OF THE CITY OF TORONTO
© Copyright City of Toronto

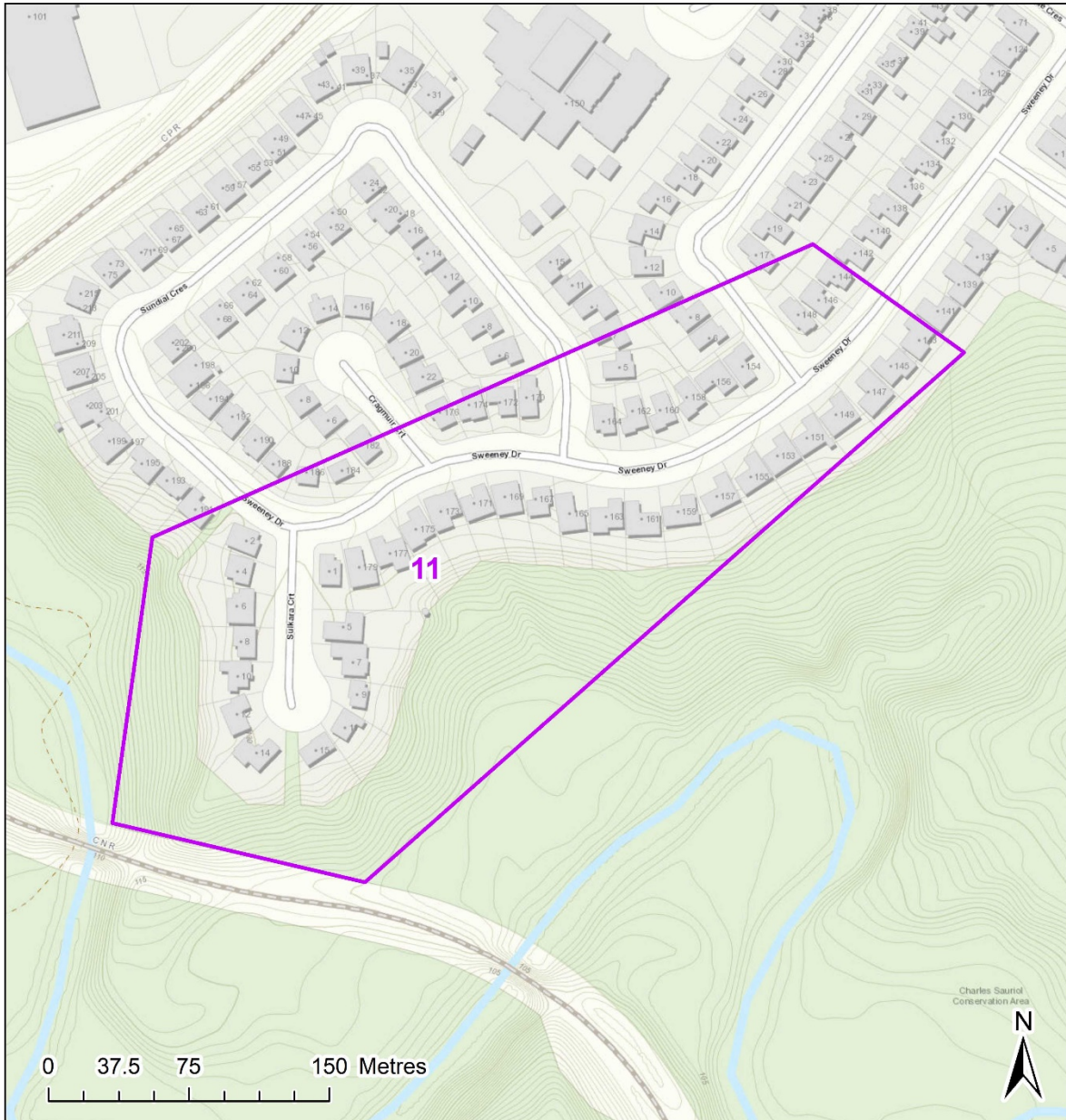
Legend

 Spray Block Boundary

Spray Block 11 - Sulkara

- Total Treatment Area: 7 Ha.

- City Ward: Don Valley East (16)



Urban Forestry:
Forest Health Care
18 Dyas Rd, 1st Floor
Toronto, ON M3B 1V5
Tel: (416) 392-1438
Fax: (416) 392-1915

THE INFORMATION HEREON HAS BEEN COMPILED
FOR GENERAL PLANNING PURPOSES ONLY.
NO ONE MAY COPY, REPRODUCE, DISTRIBUTE OR
ALTER THIS MAP WITHOUT THE WRITTEN
PERMISSION OF THE CITY OF TORONTO
© Copyright City of Toronto

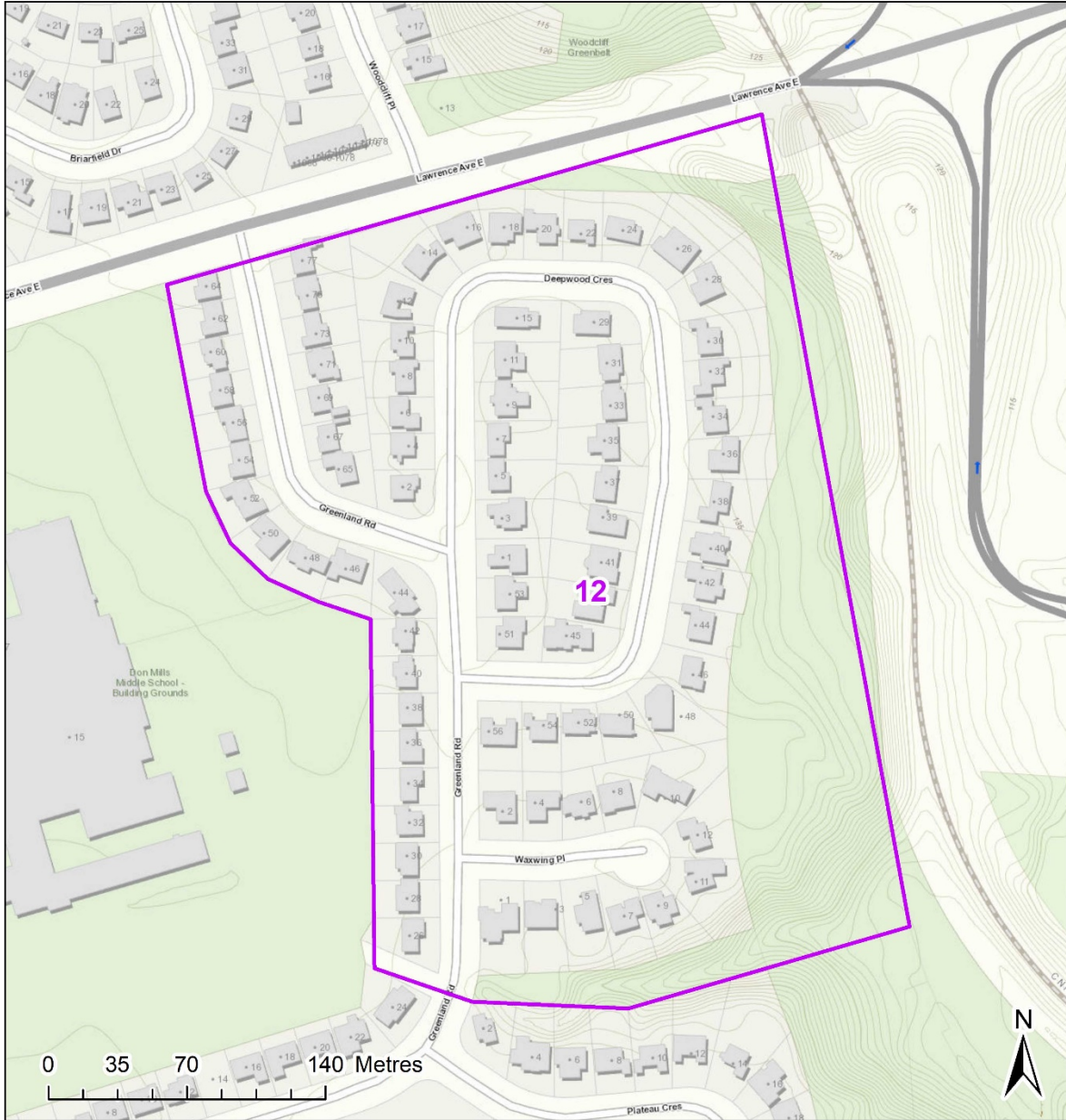
Legend

 Spray Block Boundary

Spray Block 12 - Deepwood

- Total Treatment Area: 11 Ha.

- City Ward: Don Valley East (16)



Urban Forestry:
Forest Health Care
18 Dyas Rd, 1st Floor
Toronto, ON M3B 1V5
Tel: (416) 392-1438
Fax: (416) 392-1915

THE INFORMATION HEREON HAS BEEN COMPILED
FOR GENERAL PLANNING PURPOSES ONLY.
NO ONE MAY COPY, REPRODUCE, DISTRIBUTE OR
ALTER THIS MAP WITHOUT THE WRITTEN
PERMISSION OF THE CITY OF TORONTO
© Copyright City of Toronto

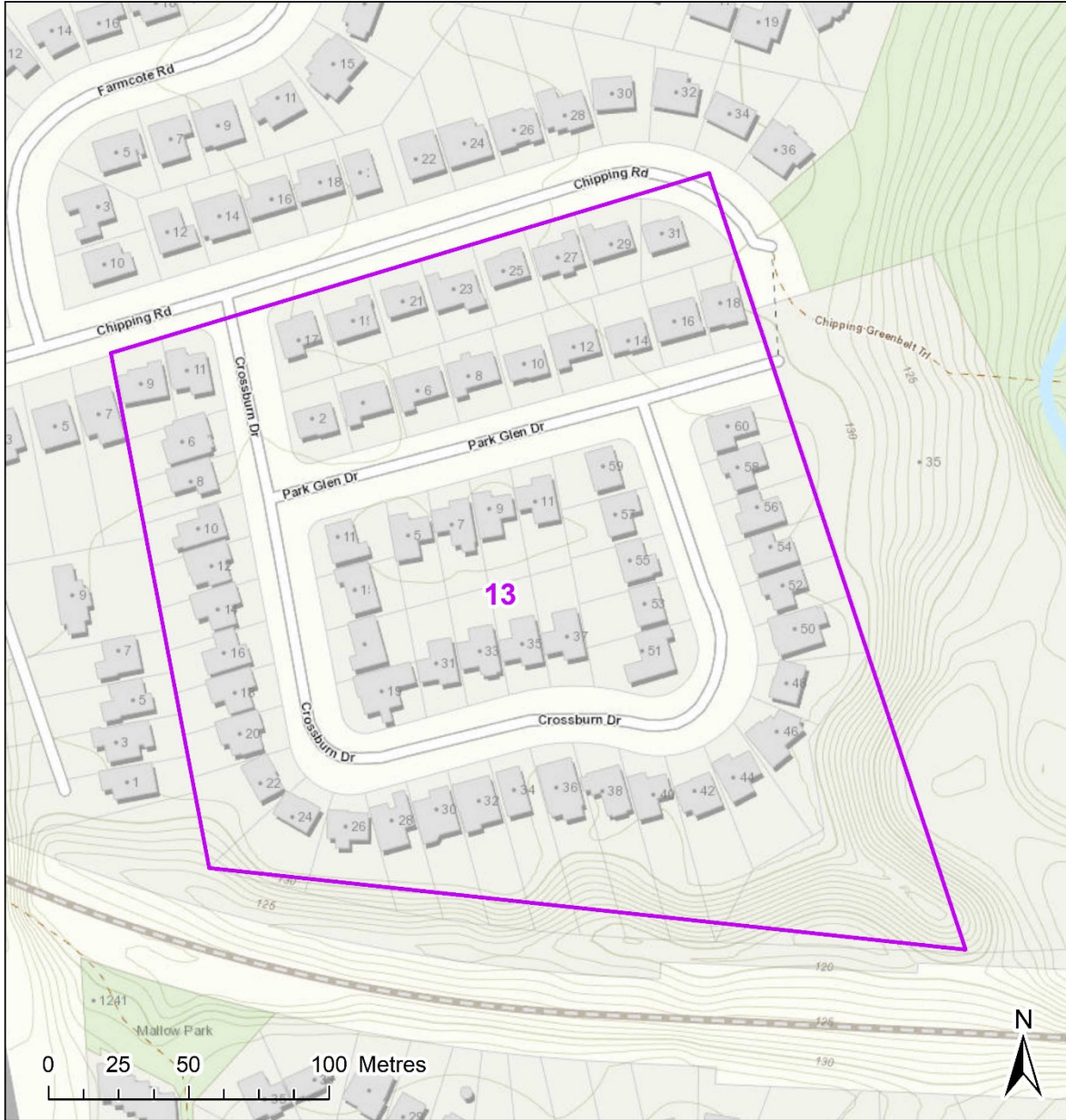
Legend

 Spray Block Boundary

Spray Block 13 - Crossburn

- Total Treatment Area: 6 Ha.

- City Ward: Don Valley East (16)



Urban Forestry:
Forest Health Care
18 Dyas Rd, 1st Floor
Toronto, ON M3B 1V5
Tel: (416) 392-1438
Fax: (416) 392-1915

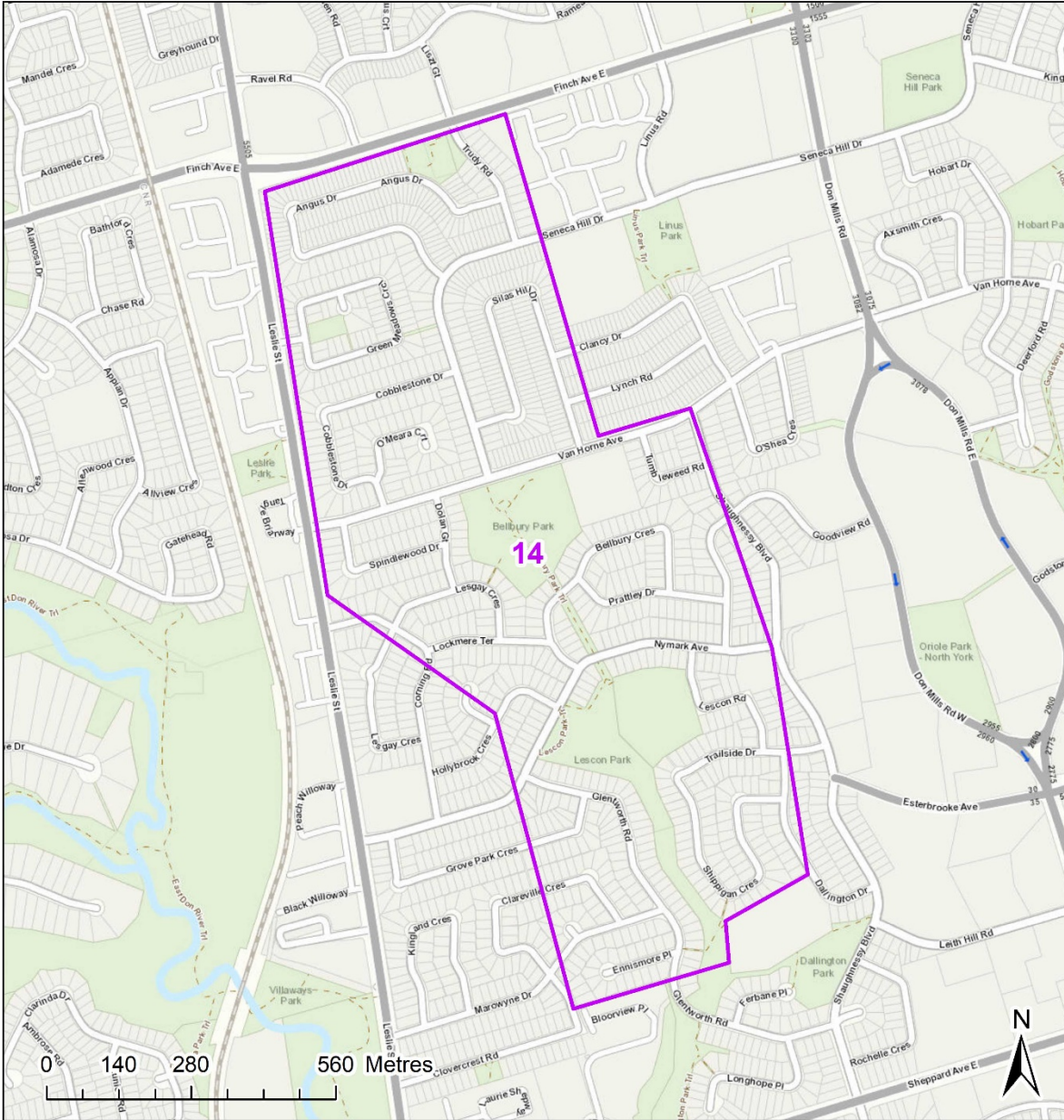
THE INFORMATION HEREON HAS BEEN COMPILED
FOR GENERAL PLANNING PURPOSES ONLY.
NO ONE MAY COPY, REPRODUCE, DISTRIBUTE OR
ALTER THIS MAP WITHOUT THE WRITTEN
PERMISSION OF THE CITY OF TORONTO
© Copyright City of Toronto

Legend

 Spray Block Boundary

Spray Block 14 - Lescon

- Total Treatment Area: 95 Ha.
- City Ward: Don Valley North (17)



Urban Forestry,
Forest Health Care
18 D'Yas Rd, 1st Floor
Toronto, ON M3B 1V5
Tel: (416) 392-1438
Fax: (416) 392-1915

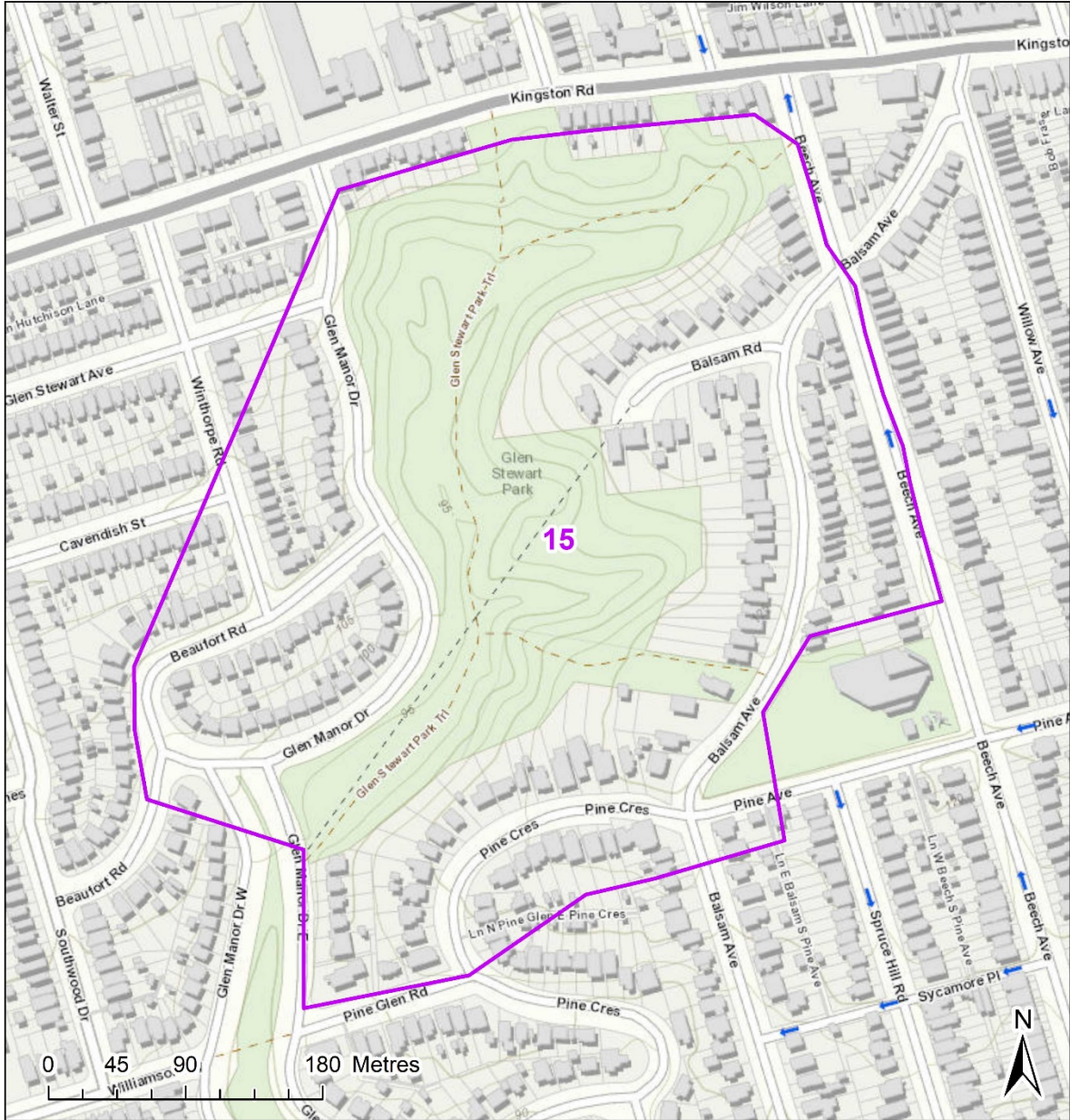
THE INFORMATION HEREON HAS BEEN COMPILED
FOR GENERAL PLANNING PURPOSES ONLY.
NO ONE MAY COPY, REPRODUCE, DISTRIBUTE OR
ALTER THIS MAP WITHOUT THE WRITTEN
PERMISSION OF THE CITY OF TORONTO
© Copyright City of Toronto

Legend

 Spray Block Boundary

Spray Block 15 - Glen Stewart

- Total Treatment Area: 21 Ha.
- City Ward: Beaches-East York (19)



Urban Forestry
Forest Health Care
18 D'Yas Rd, 1st Floor
Toronto, ON M3B 1V5
Tel: (416) 392-1438
Fax: (416) 392-1915

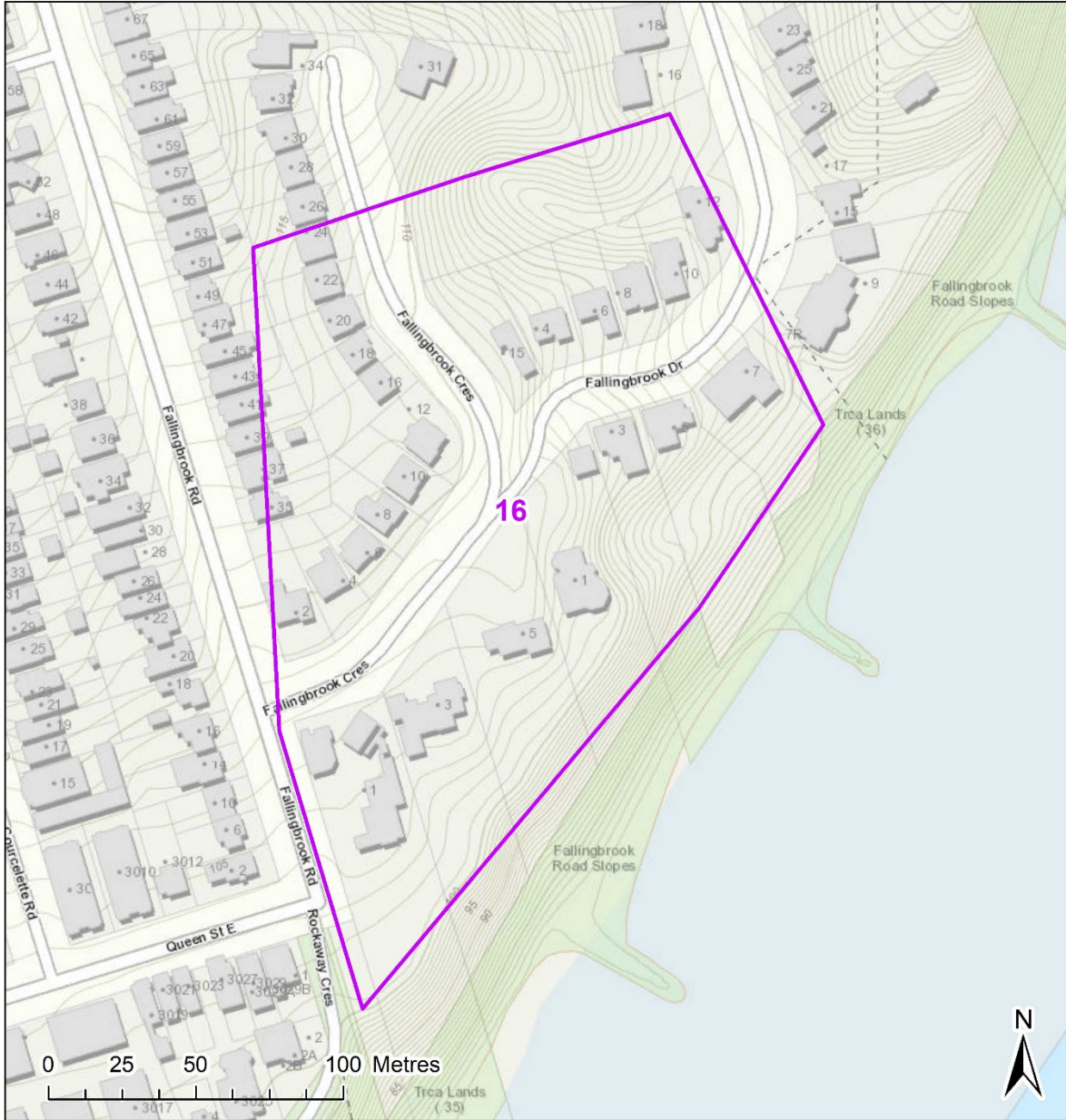
THE INFORMATION HEREON HAS BEEN COMPILED
FOR GENERAL PLANNING PURPOSES ONLY.
NO ONE MAY COPY, REPRODUCE, DISTRIBUTE OR
ALTER THIS MAP WITHOUT THE WRITTEN
PERMISSION OF THE CITY OF TORONTO
© Copyright City of Toronto

Legend

 Spray Block Boundary

Spray Block 16 - Fallingbrook

- Total Treatment Area: 4 Ha.
- City Ward: Scarborough Southwest (20)



Urban Forestry:
Forest Health Care
18 Dyas Rd, 1st Floor
Toronto, ON M3B 1V5
Tel: (416) 392-1438
Fax: (416) 392-1915

THE INFORMATION HEREON HAS BEEN COMPILED
FOR GENERAL PLANNING PURPOSES ONLY.
NO ONE MAY COPY, REPRODUCE, DISTRIBUTE OR
ALTER THIS MAP WITHOUT THE WRITTEN
PERMISSION OF THE CITY OF TORONTO
© Copyright City of Toronto

Legend

 Spray Block Boundary

Spray Block 17 - Kingsbury

- Total Treatment Area: 5 Ha.

- City Ward: Scarborough Southwest (20)



Urban Forestry
Forest Health Care
18 Dyas Rd, 1st Floor
Toronto, ON M3B 1V5
Tel: (416) 392-1438
Fax: (416) 392-1915

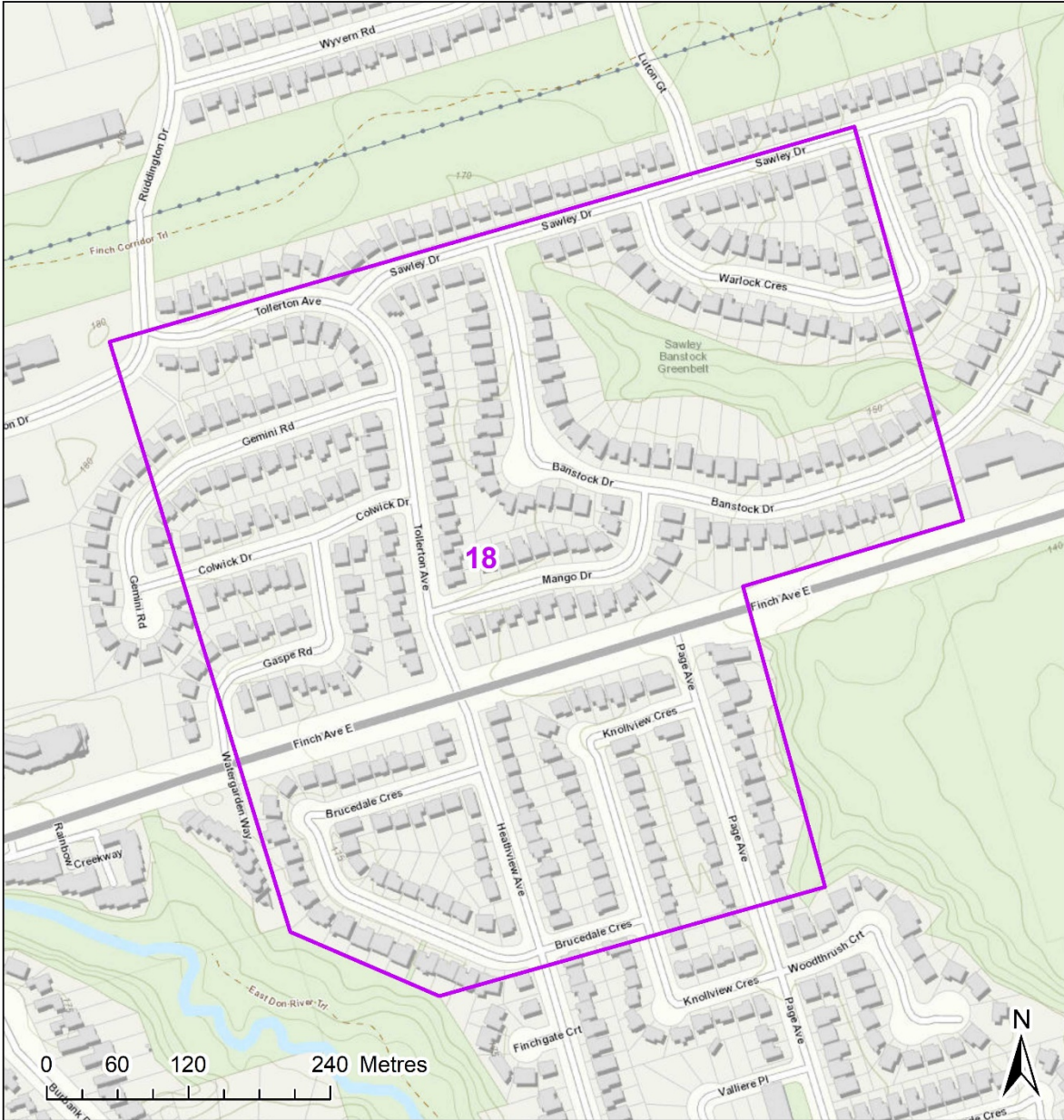
THE INFORMATION HEREON HAS BEEN COMPILED
FOR GENERAL PLANNING PURPOSES ONLY.
NO ONE MAY COPY, REPRODUCE, DISTRIBUTE OR
ALTER THIS MAP WITHOUT THE WRITTEN
PERMISSION OF THE CITY OF TORONTO
© copyright City of Toronto

Legend

 Spray Block Boundary

Spray Block 18 - Mango

- Total Treatment Area: 36 Ha.
- City Ward: Don Valley North (17)



Urban Forestry:
Forest Health Care
18 Dyas Rd, 1st Floor
Toronto, ON M3B 1V5
Tel: (416) 392-1438
Fax: (416) 392-1915

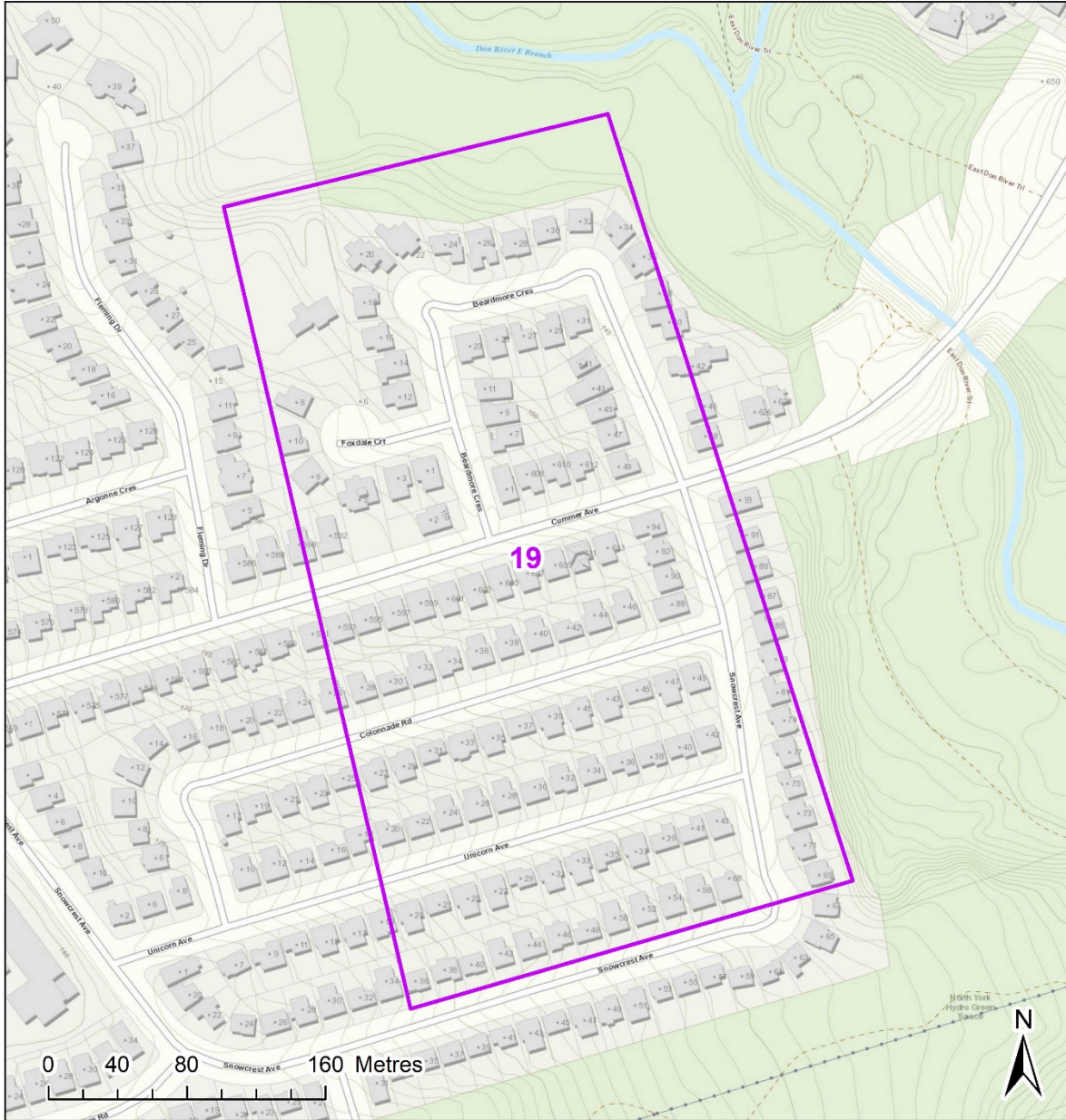
THE INFORMATION HEREON HAS BEEN COMPILED
FOR GENERAL PLANNING PURPOSES ONLY.
NO ONE MAY COPY, REPRODUCE, DISTRIBUTE OR
ALTER THIS MAP WITHOUT THE WRITTEN
PERMISSION OF THE CITY OF TORONTO
© Copyright City of Toronto

Legend

 Spray Block Boundary

Spray Block 19 - Beardmore

- Total Treatment Area: 12 Ha.
- City Ward: Don Valley North (17)



Urban Forestry:
Forest Health Care
18 Dyas Rd, 1st Floor
Toronto, ON M3B 1V5
Tel: (416) 392-1438
Fax: (416) 392-1915

THE INFORMATION HEREON HAS BEEN COMPILED
FOR GENERAL PLANNING PURPOSES ONLY.
NO ONE MAY COPY, REPRODUCE, DISTRIBUTE OR
ALTER THIS MAP WITHOUT THE WRITTEN
PERMISSION OF THE CITY OF TORONTO
© Copyright City of Toronto

Legend

 Spray Block Boundary

Spray Block 20 - Sunnybrook

- Total Treatment Area: 49 Ha.

- City Ward: Don Valley West (15)



Urban Forestry
Forest Health Care
18 D'Yas Rd, 1st Floor
Toronto, ON M3B 1V5
Tel: (416) 392-1438
Fax: (416) 392-1915

THE INFORMATION HEREON HAS BEEN COMPILED
FOR GENERAL PLANNING PURPOSES ONLY.
NO ONE MAY COPY, REPRODUCE, DISTRIBUTE OR
ALTER THIS MAP WITHOUT THE WRITTEN
PERMISSION OF THE CITY OF TORONTO
© copyright City of Toronto

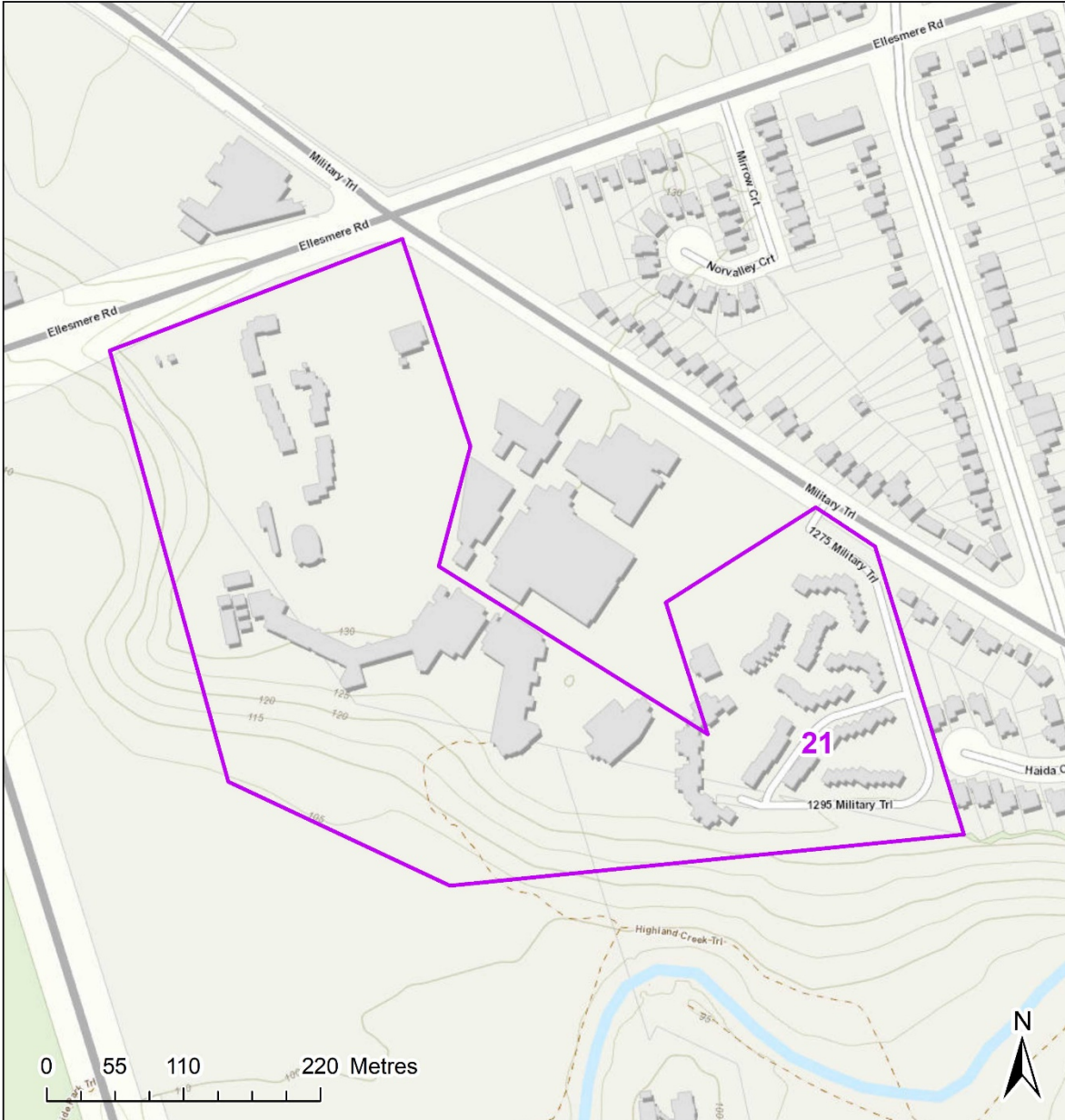
Legend

 Spray Block Boundary

Spray Block 21 - UofT Scarborough

- Total Treatment Area: 18 Ha.
- City Ward: Scarborough-Rouge Park (25)

Private Property



Urban Forestry:
Forest Health Care
18 Dyas Rd, 1st Floor
Toronto, ON M3B 1V5
Tel: (416) 392-1438
Fax: (416) 392-1915

THE INFORMATION HEREON HAS BEEN COMPILED
FOR GENERAL PLANNING PURPOSES ONLY.
NO ONE MAY COPY, REPRODUCE, DISTRIBUTE OR
ALTER THIS MAP WITHOUT THE WRITTEN
PERMISSION OF THE CITY OF TORONTO
© Copyright City of Toronto

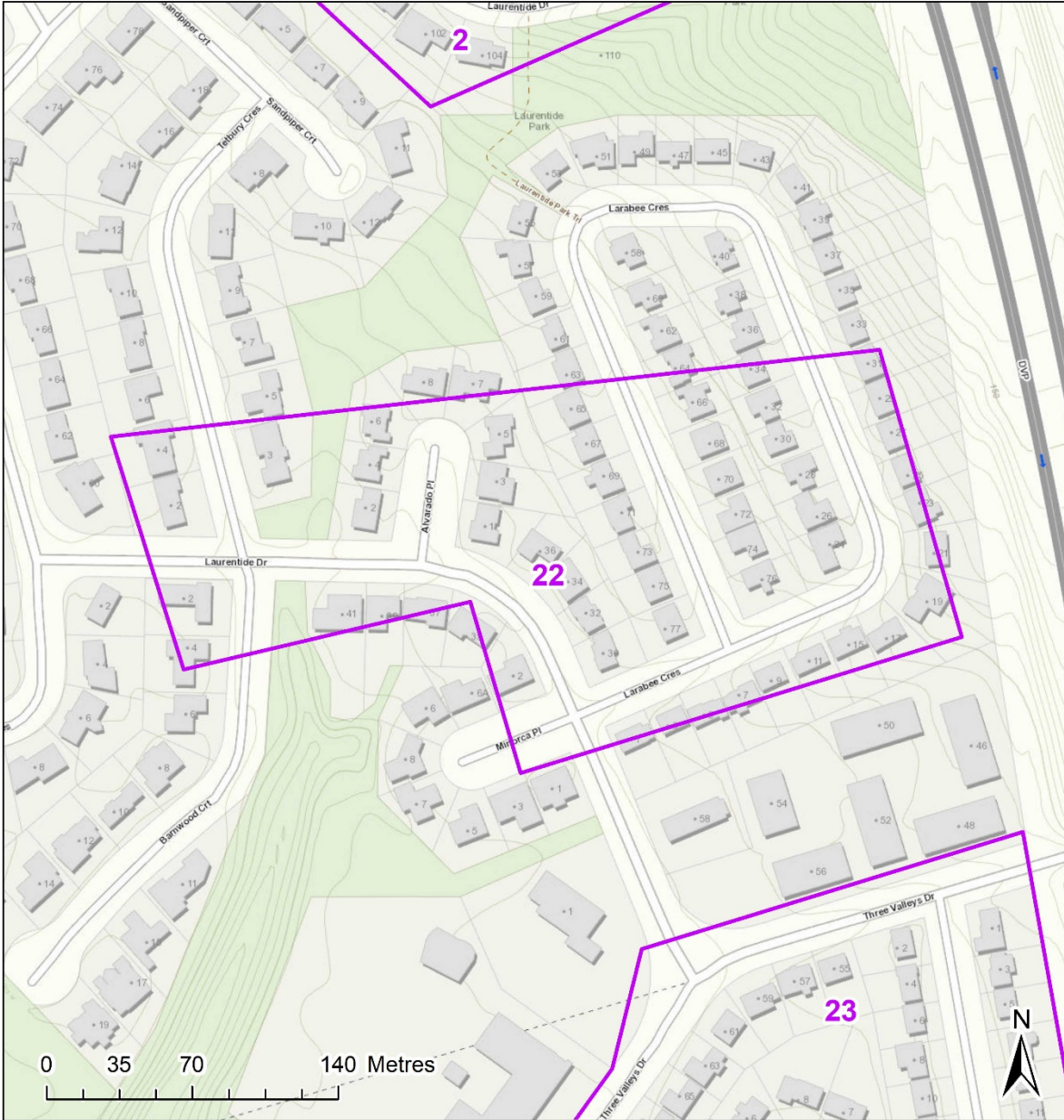
Legend

 Spray Block Boundary

Spray Block 22 - Laurentide

- Total Treatment Area: 5 Ha.

- City Ward: Don Valley East (16)



Urban Forestry:
Forest Health Care
18 Dyas Rd, 1st Floor
Toronto, ON M3B 1V5
Tel: (416) 392-1438
Fax: (416) 392-1915

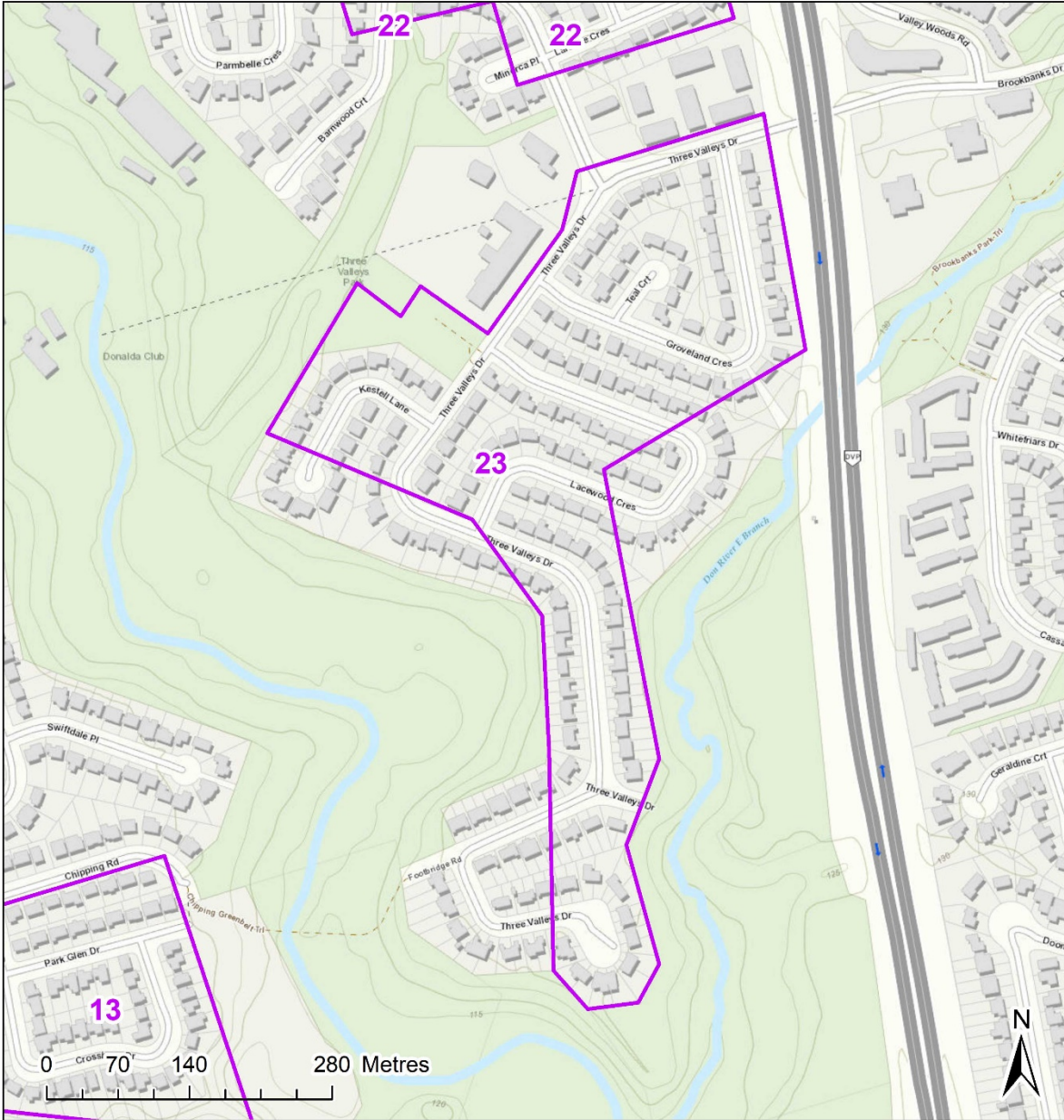
THE INFORMATION HEREON HAS BEEN COMPILED
FOR GENERAL PLANNING PURPOSES ONLY.
NO ONE MAY COPY, REPRODUCE, DISTRIBUTE OR
ALTER THIS MAP WITHOUT THE WRITTEN
PERMISSION OF THE CITY OF TORONTO
© Copyright City of Toronto

Legend

 Spray Block Boundary

Spray Block 23 - Three Valleys

- Total Treatment Area: 16 Ha.
- City Ward: Don Valley East (16)



Urban Forestry:
Forest Health Care
18 Dyas Rd, 1st Floor
Toronto, ON M3B 1V5
Tel: (416) 392-1438
Fax: (416) 392-1915

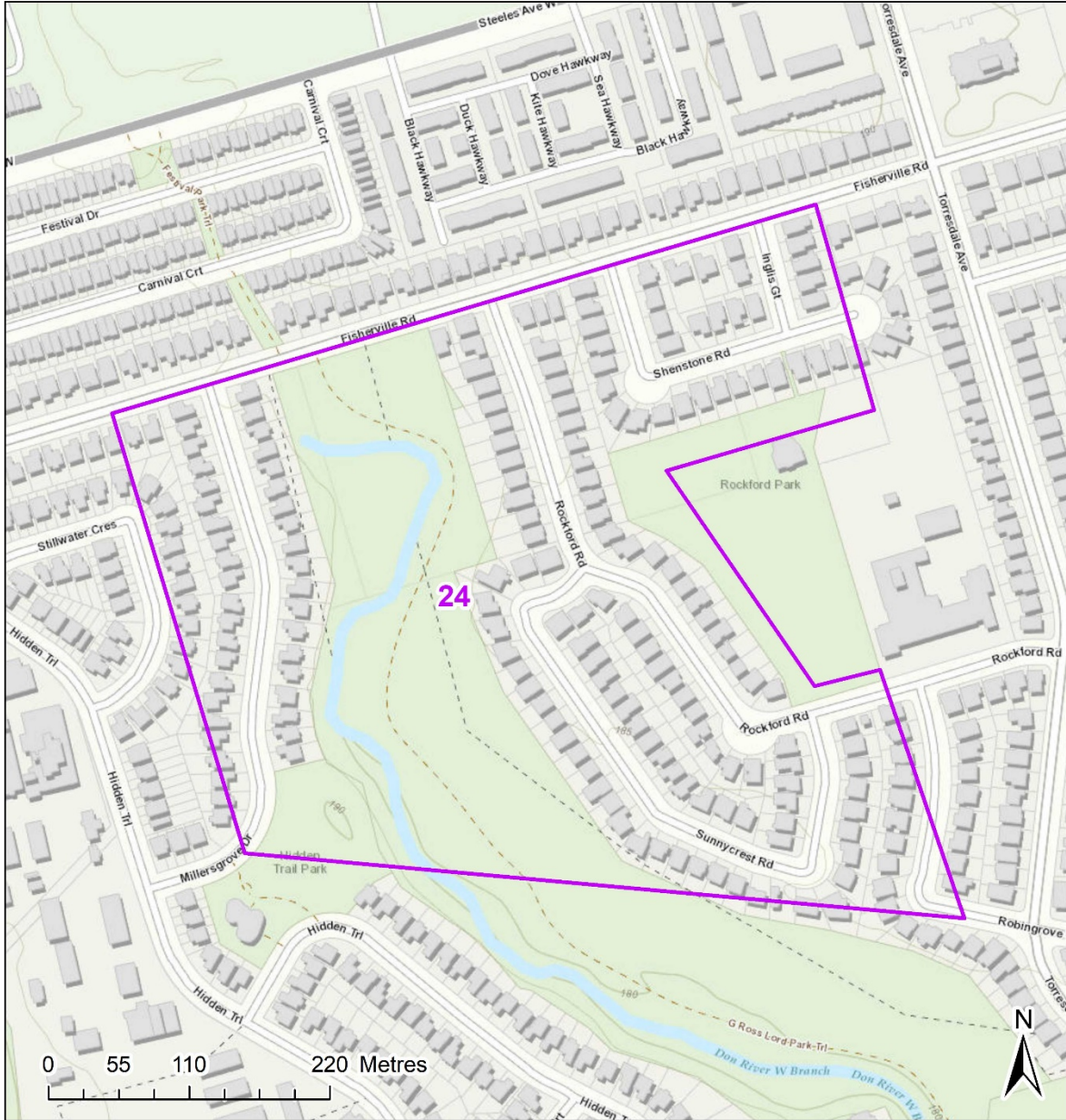
THE INFORMATION HEREON HAS BEEN COMPILED
FOR GENERAL PLANNING PURPOSES ONLY.
NO ONE MAY COPY, REPRODUCE, DISTRIBUTE OR
ALTER THIS MAP WITHOUT THE WRITTEN
PERMISSION OF THE CITY OF TORONTO
© Copyright City of Toronto

Legend

 Spray Block Boundary

Spray Block 24 - Rockford

- Total Treatment Area: 23 Ha.
- City Ward: York Centre (6)



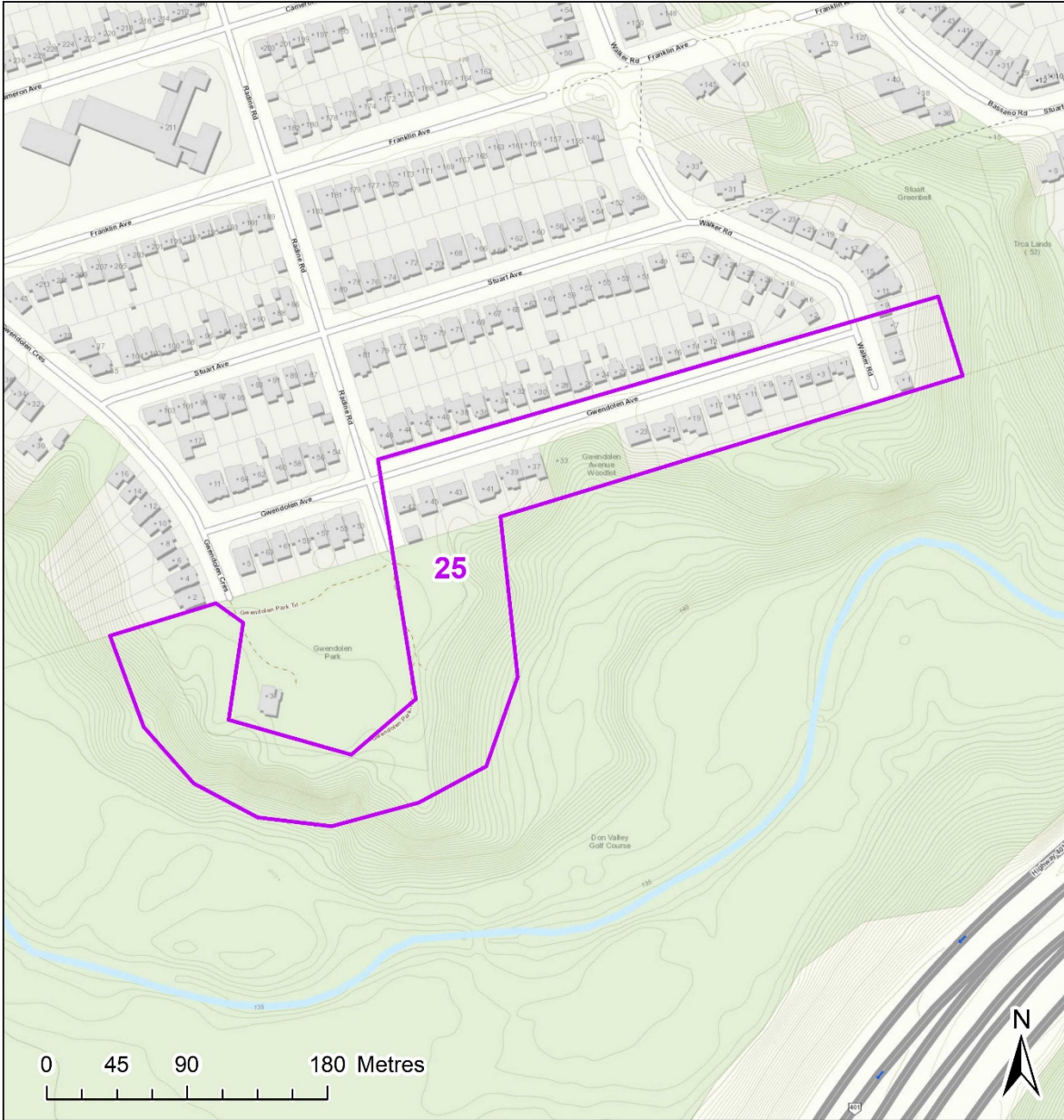
Urban Forestry:
Forest Health Care
18 Dyas Rd, 1st Floor
Toronto, ON M3B 1V5
Tel: (416) 392-1438
Fax: (416) 392-1915

THE INFORMATION HEREON HAS BEEN COMPILED
FOR GENERAL PLANNING PURPOSES ONLY.
NO ONE MAY COPY, REPRODUCE, DISTRIBUTE OR
ALTER THIS MAP WITHOUT THE WRITTEN
PERMISSION OF THE CITY OF TORONTO
© Copyright City of Toronto

Legend

 Spray Block Boundary

- Spray Block 25 - Gwendolen**
- Total Treatment Area: 5 Ha.**
- City Ward: Willowdale (18)**



Urban Forestry
Forest Health Care
18 Dyas Rd, 1st Floor
Toronto, ON M3B 1V5
Tel: (416) 392-1438
Fax: (416) 392-1915

THE INFORMATION HEREON HAS BEEN COMPILED
FOR GENERAL PLANNING PURPOSES ONLY.
NO ONE MAY COPY, REPRODUCE, DISTRIBUTE OR
ALTER THIS MAP WITHOUT THE WRITTEN
PERMISSION OF THE CITY OF TORONTO
© Copyright City of Toronto

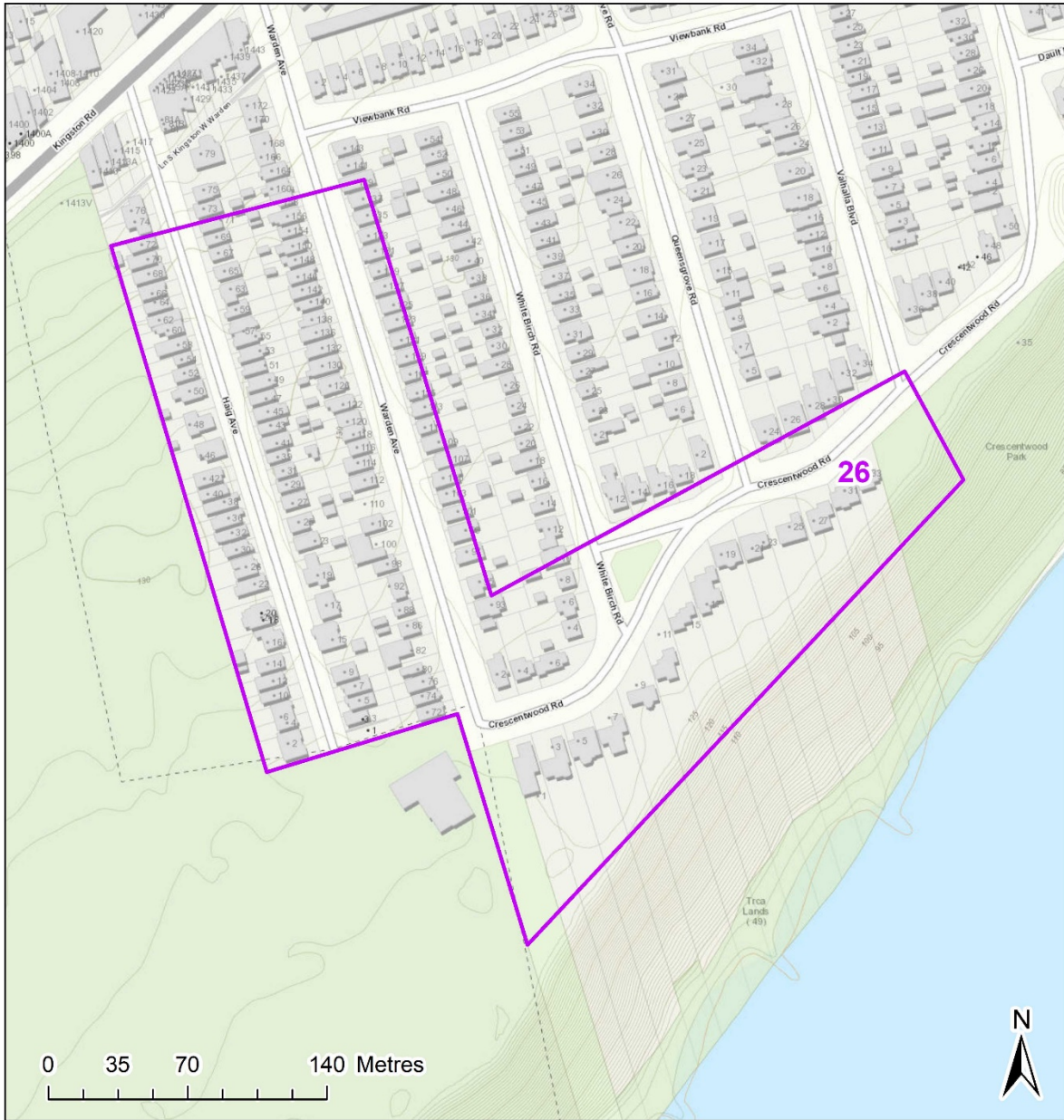
Legend

 Spray Block Boundary

Spray Block 26 - Crescentwood

- Total Treatment Area: 7 Ha.

- City Ward: Scarborough Southwest (20)



Urban Forestry:
Forest Health Care
18 Dyas Rd, 1st Floor
Toronto, ON M3B 1V5
Tel: (416) 392-1438
Fax: (416) 392-1915

THE INFORMATION HEREON HAS BEEN COMPILED
FOR GENERAL PLANNING PURPOSES ONLY.
NO ONE MAY COPY, REPRODUCE, DISTRIBUTE OR
ALTER THIS MAP WITHOUT THE WRITTEN
PERMISSION OF THE CITY OF TORONTO
© Copyright City of Toronto

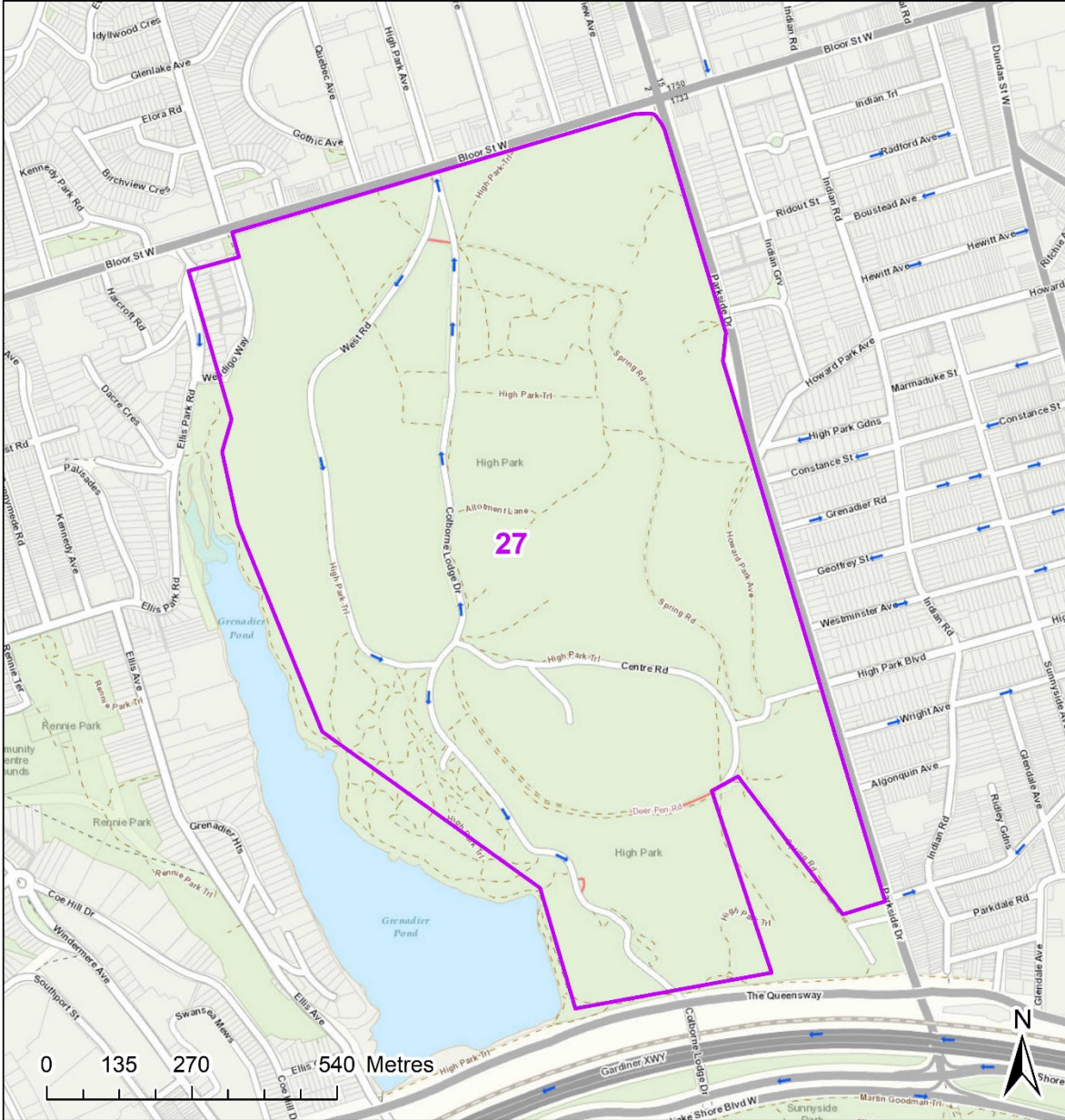
Legend

 Spray Block Boundary

SCHEDULE "B"

Spray Block 27 - High Park

- Total Treatment Area: 128 Ha.
- City Ward: Parkdale-High Park (4)



Urban Forestry:
Forest Health Care
18 Dundas Rd., 1st Floor
Toronto, ON M3B 1V5
Tel (416) 392-1436
Fax (416) 392-1915

THE INFORMATION HEREON HAS BEEN COMPILED FOR GENERAL PLANNING PURPOSES ONLY. NO ONE MAY COPY, REPRODUCE, DISTRIBUTE OR ALTER THIS MAP WITHOUT THE WRITTEN PERMISSION OF THE CITY OF TORONTO
© Copyright City of Toronto

Legend

 Spray Block Boundary