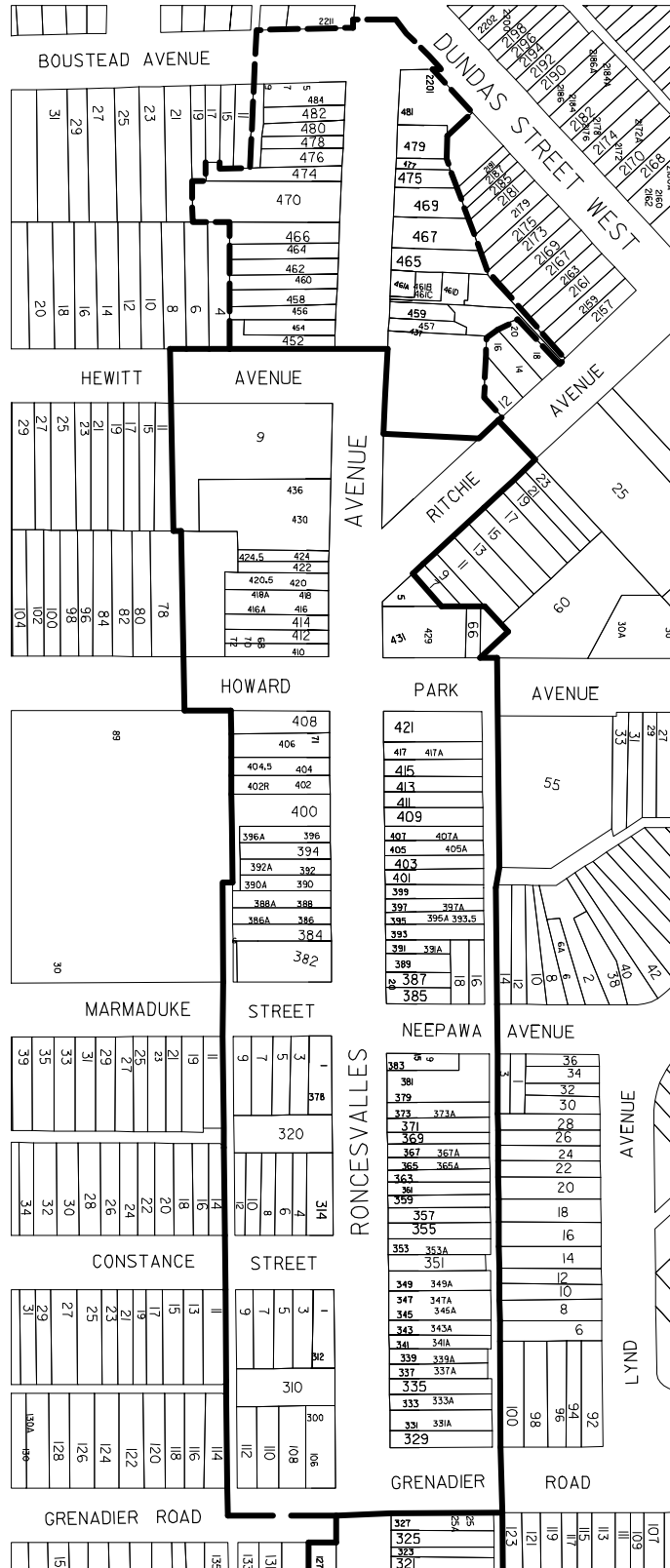


# Attachment No. 1

MAP 1 of 4

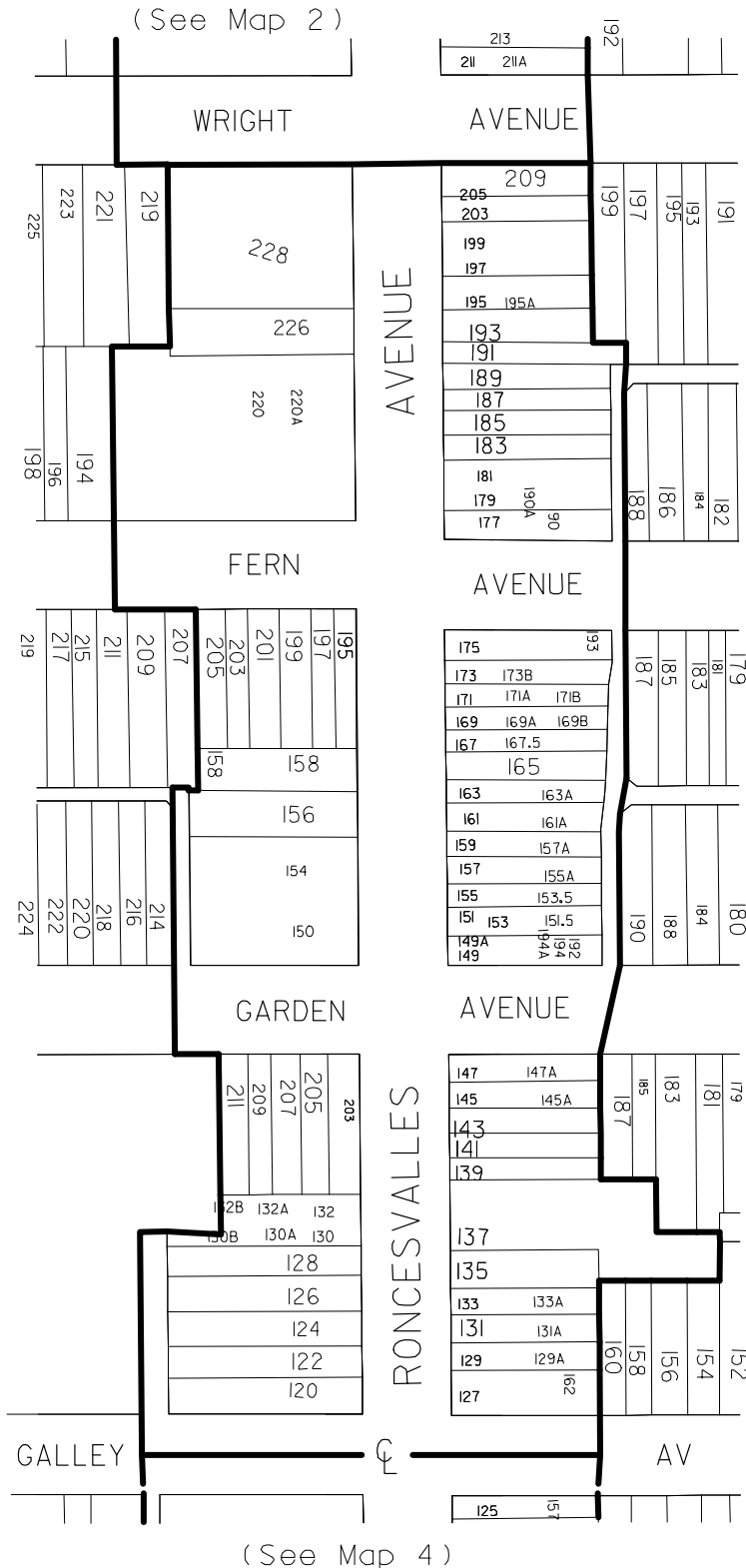


SURVEY AND MAPPING SERVICES  
 TORONTO AUGUST 2006  
 BJA06/RONCESV\_RPT1.DGN  
 FILE: 205 DRAWN: WS  
 MAP No. 48H-11, 48H-12,  
 48H-21, 48H-22

RONCESVALLES VILLAGE BUSINESS IMPROVMENT AREA  
 PROPOSED EXPANSION







RONCESVALLES VILLAGE BUSINESS IMPROVEMENT AREA  
 PROPOSED EXPANSION

WORKS AND EMERGENCY SERVICES  
 SURVEY AND MAPPING SERVICES  
 TORONTO OCTOBER, 2001  
 BTA01/RONCESV3.DGN  
 FILE: 205 DRAWN: WL  
 MAP No. 48H-11, 48H-12,  
 48H-21, 48H-22

