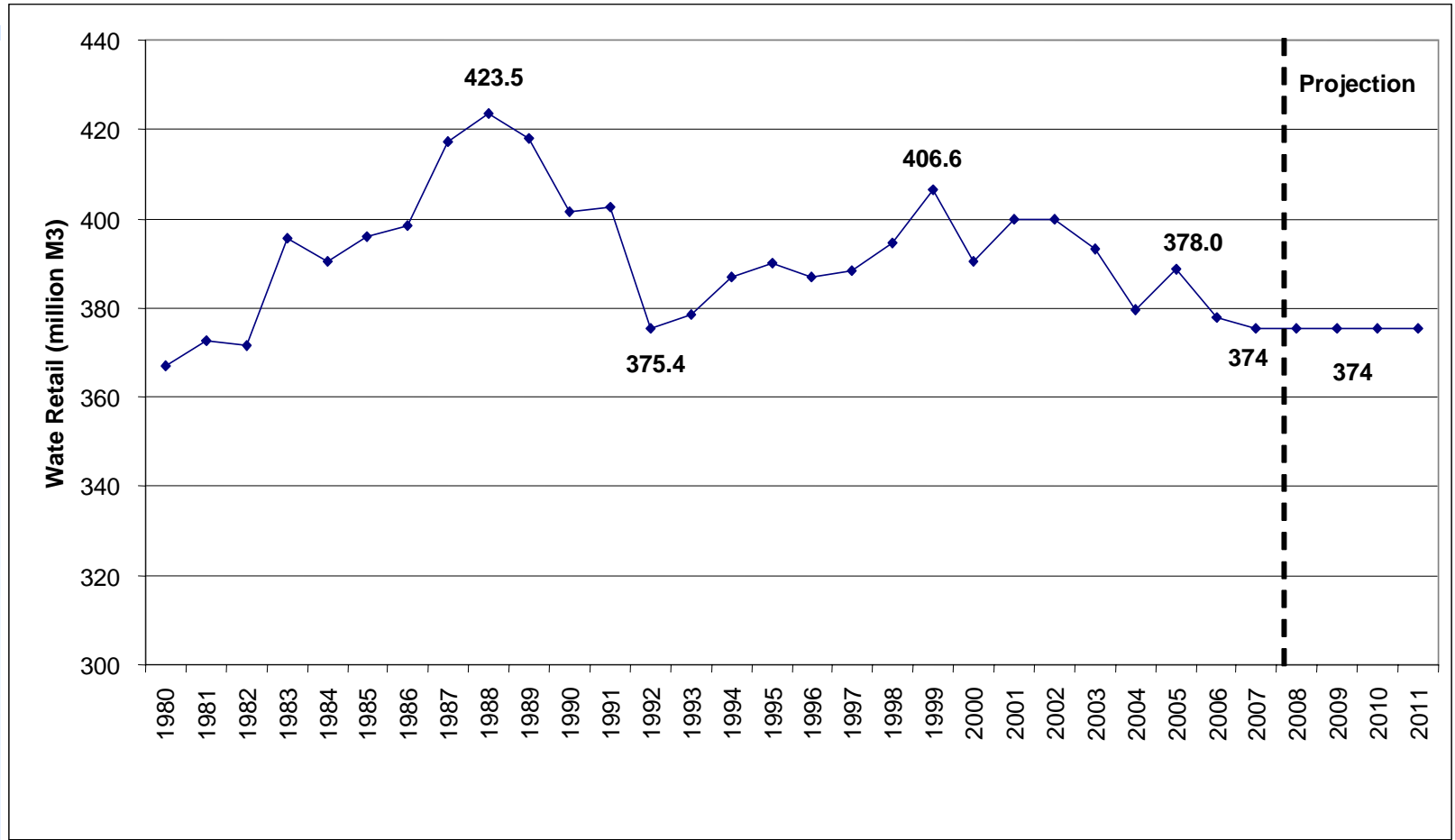

2008 Water Rates and Rate Restructuring

Presentation to
Budget Committee
October 16, 2007

Water Consumption and Forecast



Current (2007) 7 Block Rate Structure

Volume of water used or fraction thereof, calculated daily	2007 Rates \$/m³
For the first 240 m ³ of water used per year	1.5740
For the next 5,760 m ³ of water used per year	1.6270
For the next 6,000 m ³ of water used per year	1.6404
For the next 48,000 m ³ of water used per year	1.6242
For the next 60,000 m ³ of water used per year	1.6120
For the next 120,000 m ³ of water used per year	1.6255
For any volume over 240,000 m ³ of water used per year	1.5340

2008 Rate Restructuring

- 7 block rate structure following amalgamation in 1998 to harmonize the rates of former municipalities
- Rate structure to be reviewed after harmonization completed
- Consultation process with Stakeholders and General Public in 2005-2006
- New rate structure adopted by Council June, 2007 providing single rate for domestic consumption and lower rate for industrial process use in order to enhance economic competitiveness
 - *The new rate structure provides rebates for low income seniors and people with disabilities*

Rate Restructuring

Effective January 1, 2008

- Single domestic-use rate for
All consumers - **TIER 1**
- Second lower process use rate for the
Industrial Tax class - **TIER 2**
 - 20% reduction from TIER 1 rate on volume consumed > 6,000 m³
 - limit future TIER 2 rate increases to one-third of domestic use until 30% reduction achieved

Projected 2008 Rates

TIER 1 - \$1.7352/m³ - All

TIER 2 - \$1.3881/m³ – Industrial

Example

Consumption m ³	2007 Effec Rate \$/m ³	2007 Avg Bill \$/year	2008 Effec Rate \$/m ³	2008 Avg Bill \$/year	2008 Increase*		2008 Effec Rate Incr %
					\$/year	\$/month	
Average Residential Home (315 m ³ /y)	1.5866	\$500	1.7352	\$547	\$47	\$4	9.36%
Industrial Tier 2 (100,000 m ³ /y)	1.6203	\$162,033	1.4089	\$140,893	-\$21,141	-\$1,762	-13.05%

*2007 average residential increase based on approved 9% annualized rate increase - \$40