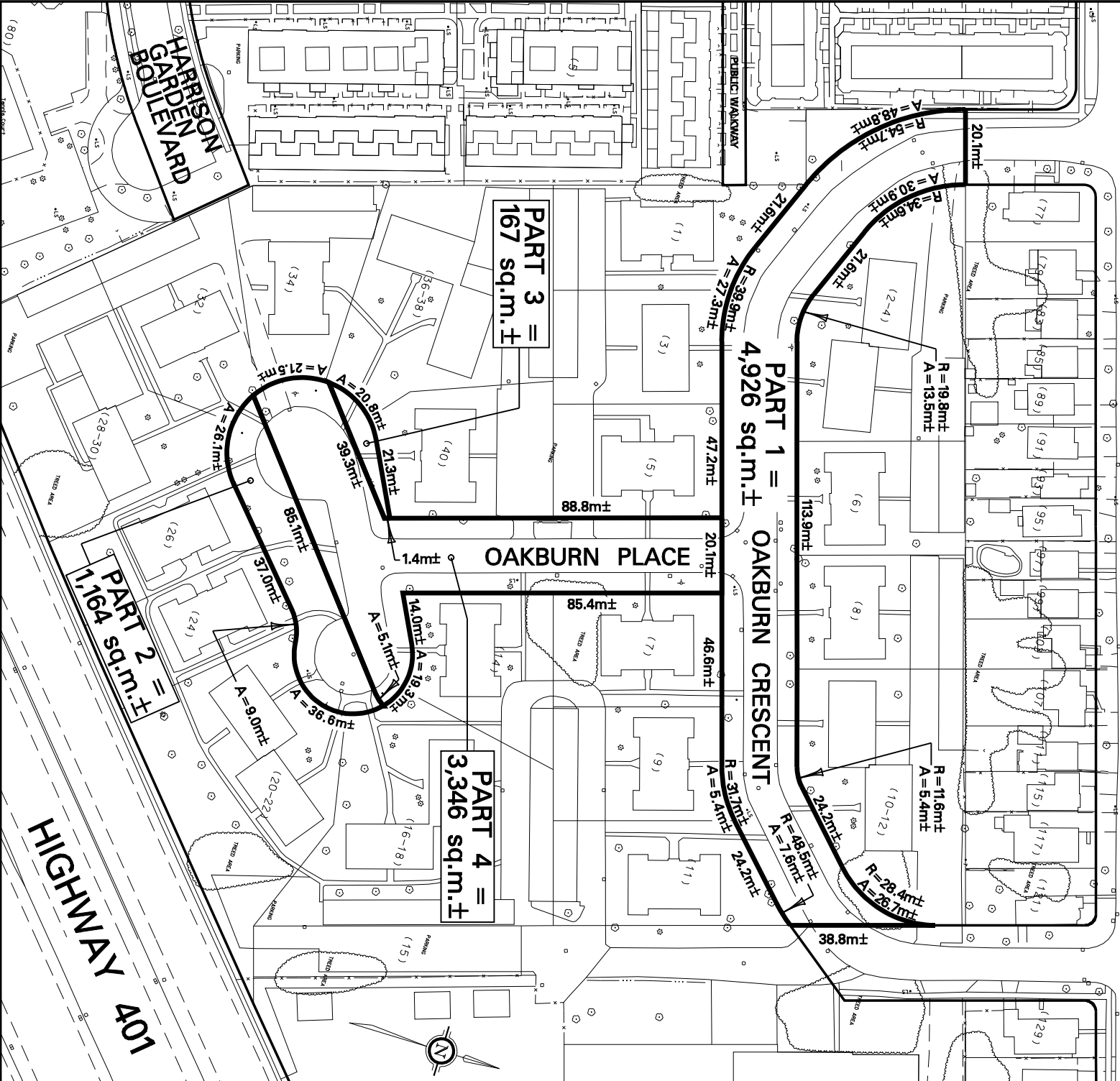


AVONDALE AVENUE



**TORONTO**

TECHNICAL SERVICES DIVISION  
SURVEY & MAPPING SERVICES

NOTE:  
THIS SKETCH HAS  
BEEN COMPILED FROM  
OFFICE RECORDS.

NOT TO SCALE

PROPERTY INFORMATION SHEET

PROPOSED CLOSURE OF A PORTION OF  
THE OAKBURN CRESCENT RIGHT-OF-WAY (PART 1)  
AND THE OAKBURN PLACE RIGHT-OF-WAY (PARTS 2 - 4)

WARD 23 - WILLOWDALE

DATE: MAY 14, 2007

SKETCH No. PS-2007-145B

