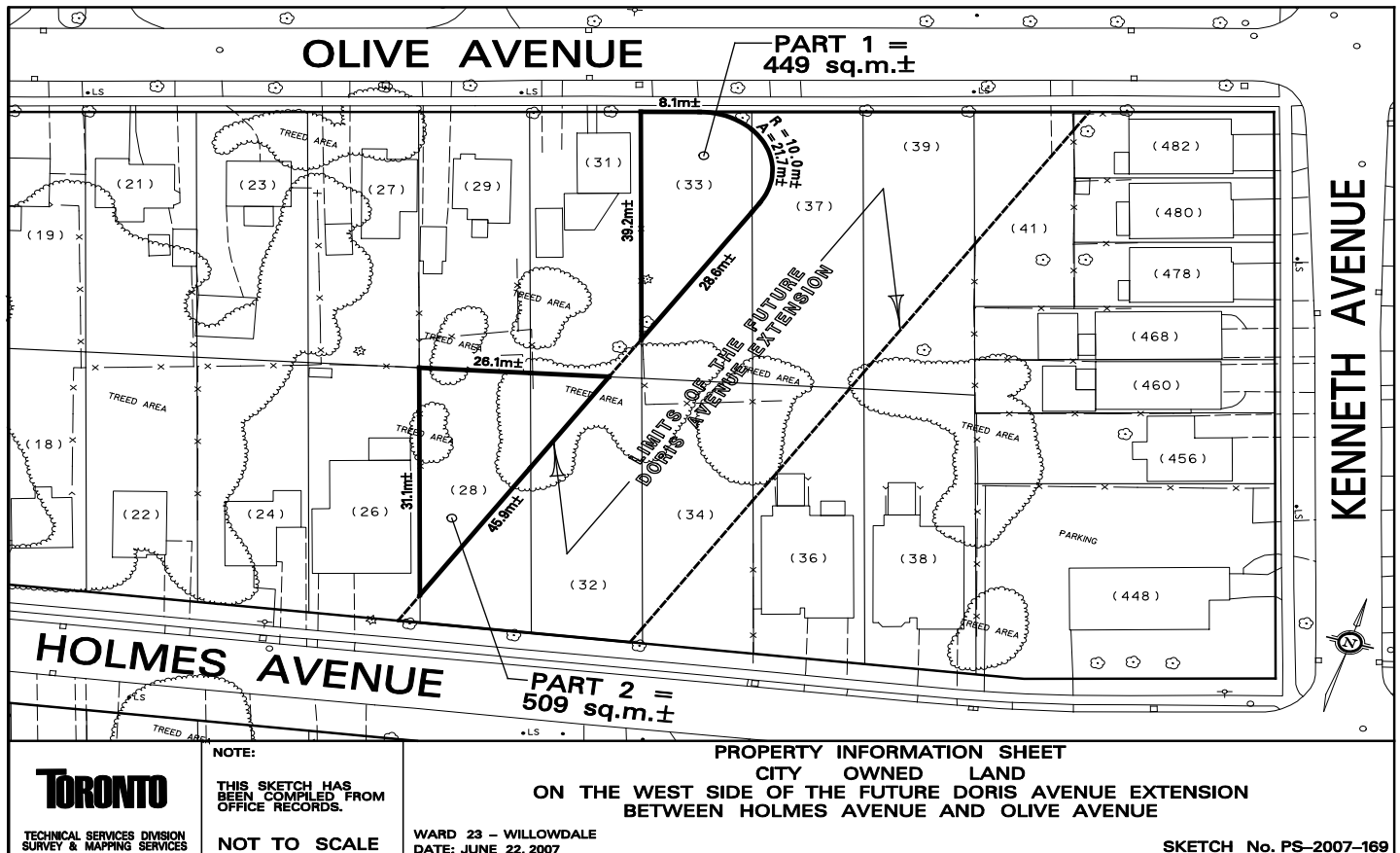
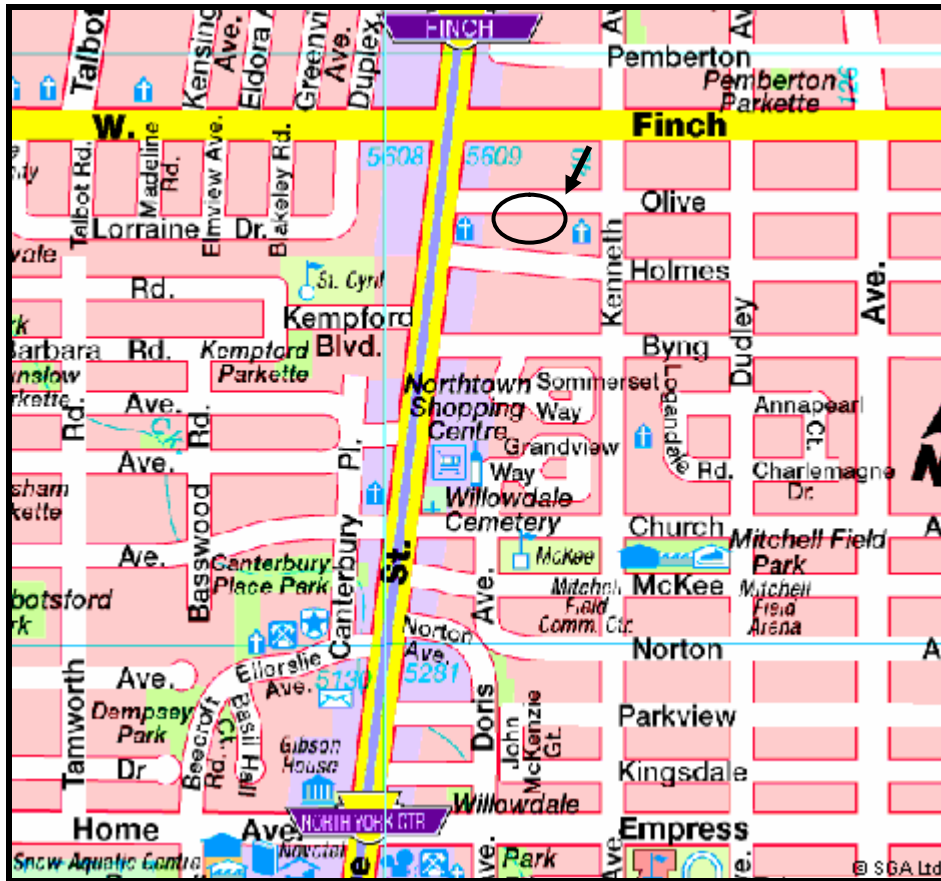


Appendix "B"



Toronto

TECHNICAL SERVICES DIVISION
SURVEY & MAPPING SERVICES

NOTE:

THIS SKETCH HAS
BEEN COMPILED FROM
OFFICE RECORDS.

NOT TO SCALE

WARD 23 - WILLOWDALE
DATE: JUNE 22, 2007

PROPERTY INFORMATION SHEET
CITY OWNED LAND
ON THE WEST SIDE OF THE FUTURE DORIS AVENUE EXTENSION
BETWEEN HOLMES AVENUE AND OLIVE AVENUE

SKETCH No. PS-2007-169